

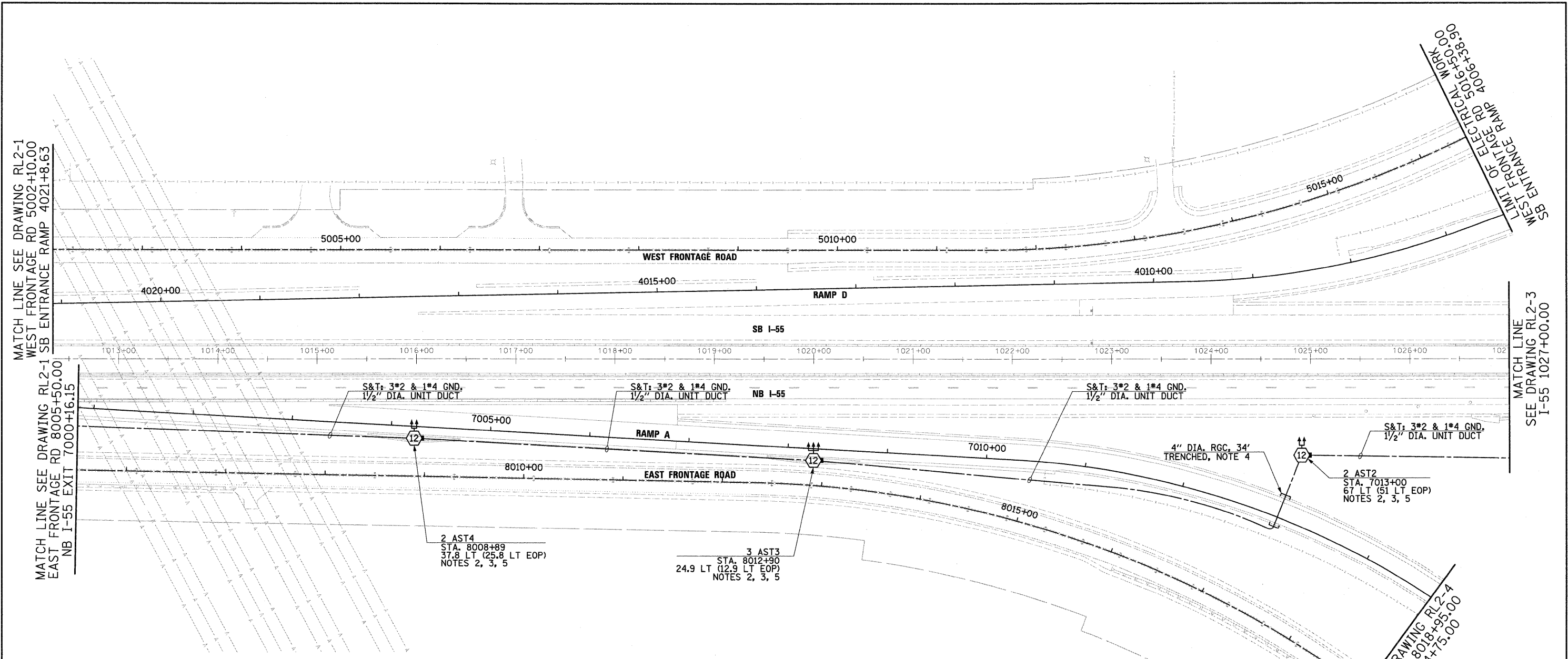
MATCH LINE SEE DRAWING RL2-1
WEST FRONTAGE RD 5002+10.00
SB ENTRANCE RAMP 4021+8.63

MATCH LINE SEE DRAWING RL2-1
EAST FRONTAGE RD 8005+50.00
NB I-55 EXIT 7000+16.15

MATCH LINE
SEE DRAWING RL2-3
I-55 1027+00.00

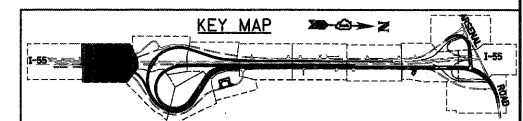
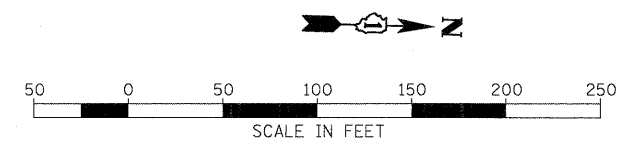
LIMIT OF ELECTRICAL WORK
SB ENTRANCE RAMP 4006+38.00
WEST FRONTAGE RD 5016+30.00

MATCH LINE SEE DRAWING RL2-4
EAST FRONTAGE RD 8018+95.00
NB I-55 EXIT 7014+75.00



NOTES:

1. SEE DRAWING GE-1 FOR ELECTRICAL SYMBOL LIST AND ABBREVIATIONS. SEE DRAWING GE-2 FOR ELECTRICAL GENERAL NOTES AND SUGGESTED LIGHTING PHASING NOTES.
2. FURNISH AND INSTALL HIGH MAST LIGHT TOWER FOUNDATIONS SHOWN. INCLUDE GROUND WELLS, GROUND RODS, GROUND WIRE, ANCHOR BOLTS, AND LIGHT TOWER SERVICE PAD. SEE DRAWINGS S-2 THROUGH S-5, AND ED-9 FOR HIGH MAST LIGHT TOWER FOUNDATION DETAILS. EXCEPT FOR THE LIGHT TOWER SERVICE PAD, THIS WORK SHALL BE INCLUDED IN THE "LIGHT TOWER FOUNDATION, 54" DIAMETER" PAY ITEM.
3. SEE IDOT STANDARD DRAWINGS BE-505a, BE-505b, AND BE-505c FOR HIGH MAST LIGHT TOWER INSTALLATION DETAILS. THIS WORK SHALL BE INCLUDED IN "LIGHT TOWER, 120 FOOT MOUNTING HEIGHT, LUMINAIRE MT. - 12" PAY ITEM. SEPARATE PAYMENT WILL NOT BE MADE.
4. EXTEND CONDUIT SLEEVE A MINIMUM OF 2 FEET BEYOND THE SHOULDER.
5. SEE DRAWING ED-2 FOR CONDUIT INSTALLATION DETAILS FOR GROUND MOUNTED HIGH MAST LIGHT TOWERS.



McDonough Associates Inc.
Engineers / Architects
130 East Randolph Street Chicago, Illinois 60601

FILE NAME = D:\60F12-SHT-RL2-2.dgn	USER NAME = TKI\uegal	DESIGNED - JLW	REVISED -
PLOT SCALE = 1:50	CHECKED - KMY	DRAWN - CJM	REVISED -
PLOT DATE = 2/3/2011	DATE - 2/4/11		REVISED -

**STATE OF ILLINOIS
DEPARTMENT OF TRANSPORTATION**

**I-55 AT ARSENAL ROAD
PROPOSED ROADWAY LIGHTING PLAN-STAGE 2**

SCALE: 1" = 50' SHEET NO. 2 OF 12 SHEETS STA. TO STA.

F.A.I. RTE. 55	SECTION 99-2HB-2B-1	COUNTY WILL	TOTAL SHEETS 756	SHEET NO. 360
CONTRACT NO. 60F12			FED. ROAD DIST. NO. 1 ILLINOIS FED. AID PROJECT	