



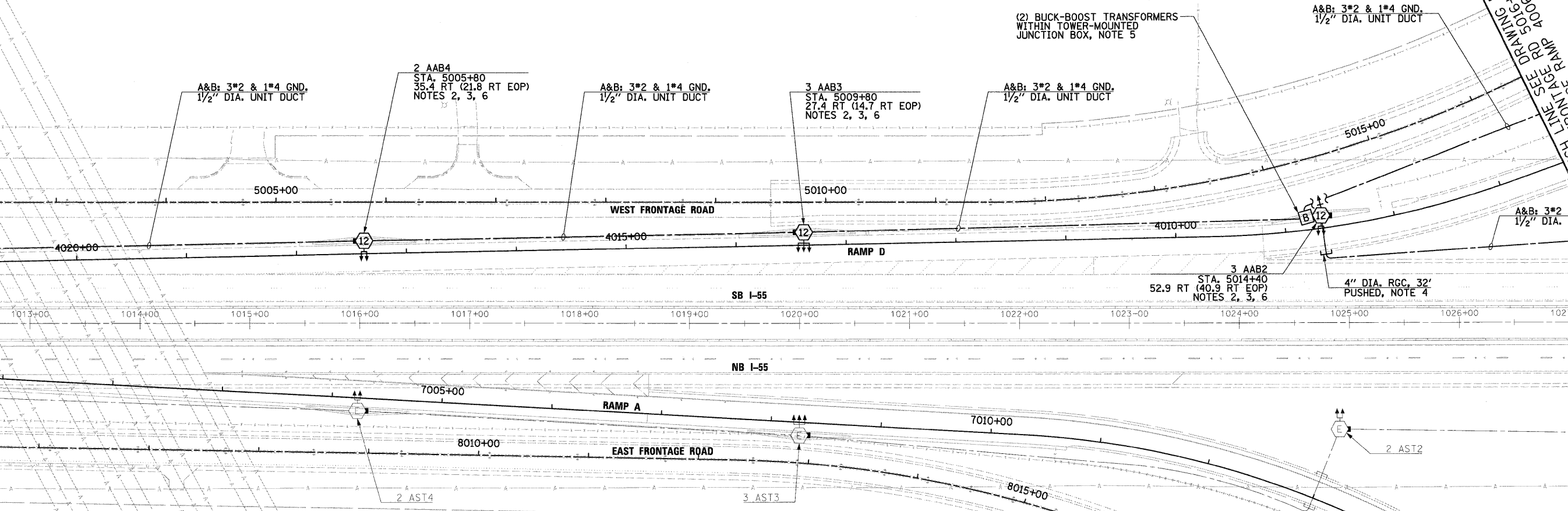
MATCH LINE SEE DRAWING RL3-1
WEST FRONTAGE RD 5002+10.00
SB ENTRANCE RAMP 4021+8.63

MATCH LINE SEE DRAWING RL3-1
EAST FRONTAGE RD 8005+50.00
NB I-55 EXIT 7000+16.15

MATCH LINE SEE DRAWING RL3-3
SB ENTRANCE RAMP 4006+38.90
WEST FRONTAGE RD 5016+50.00

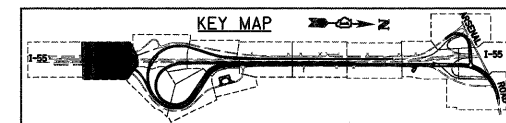
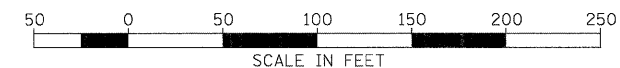
MATCH LINE
SEE DRAWING RL3-3
I-55 1027+00.00

LIMIT OF ELECTRICAL WORK
EAST FRONTAGE RD 8018+95.00
NB I-55 EXIT 7014+75.00



NOTES:

- SEE DRAWING GE-1 FOR ELECTRICAL SYMBOL LIST AND ABBREVIATIONS. SEE DRAWING GE-2 FOR ELECTRICAL GENERAL NOTES AND SUGGESTED LIGHTING PHASING NOTES.
- FURNISH AND INSTALL HIGH MAST LIGHT TOWER FOUNDATIONS SHOWN. INCLUDE GROUND WELLS, GROUND RODS, GROUND WIRE, ANCHOR BOLTS, AND LIGHT TOWER SERVICE PAD. SEE DRAWINGS S-2 THROUGH S-5, AND ED-9 FOR HIGH MAST LIGHT TOWER FOUNDATION DETAILS. EXCEPT FOR THE LIGHT TOWER SERVICE PAD, THIS WORK SHALL BE INCLUDED IN THE "LIGHT TOWER FOUNDATION, 54" DIAMETER" PAY ITEM.
- SEE IDOT STANDARD DRAWINGS BE-505a, BE-505b, AND BE-505c FOR HIGH MAST LIGHT TOWER INSTALLATION DETAILS. THIS WORK SHALL BE INCLUDED IN "LIGHT TOWER, 120 FOOT MOUNTING HEIGHT, LUMINAIRE MT. - 12" PAY ITEM. SEPARATE PAYMENT WILL NOT BE MADE.
- EXTEND CONDUIT SLEEVE A MINIMUM OF 2 FEET BEYOND THE SHOULDER.
- BUCK-BOOST TRANSFORMERS TO BE INSTALLED AT THE DISCRETION OF THE ENGINEER. AFTER HIGH MAST LIGHT TOWERS 3 AAB3 AND 3 AAB4, SHOWN ON THIS DRAWING, 3 AAB5 AND 3 AAB6, SHOWN ON DRAWING RL3-1, AND 3 AAB7, 2 AAB8, AND 2 AAB9, SHOWN ON DRAWING RL3-3, ARE INSTALLED, THE CONTRACTOR SHALL TEST THE CIRCUITS BEFORE THE BUCK-BOOST TRANSFORMERS ARE INSTALLED IN CASE COMED IS PROVIDING VOLTAGE SIGNIFICANTLY HIGHER THAN EXPECTED AND THE BUCK-BOOST TRANSFORMER INSTALLATION CAN BE OMITTED. SHOULD THE ENGINEER DETERMINE THAT BUCK-BOOST TRANSFORMERS ARE REQUIRED, SEE DRAWING ED-5 FOR BUCK-BOOST TRANSFORMER INSTALLATION DETAILS. TESTING OF THE CIRCUITS TO DETERMINE IF BUCK-BOOST TRANSFORMERS ARE NECESSARY SHALL BE CONSIDERED INCIDENTAL TO THE COST OF THE APPLICABLE CABLE PAY ITEM. SEPARATE PAYMENT WILL NOT BE MADE. IF BUCK-BOOST TRANSFORMERS ARE REQUIRED, THE BUCK-BOOST TRANSFORMER, OVERCURRENT PROTECTION DEVICES, ENCLOSURE, MOUNTING HARDWARE, WIRING AND ALL INCIDENTALS NECESSARY FOR A COMPLETE AND FUNCTIONAL INSTALLATION SHALL BE INCLUDED IN THE "BUCK-BOOST TRANSFORMER, 1.5KVA, 240V PRIMARY, 24V SECONDARY" PAY ITEM. SEPARATE PAYMENT WILL NOT BE MADE.
- SEE DRAWING ED-2 FOR CONDUIT INSTALLATION DETAILS FOR GROUND MOUNTED HIGH MAST LIGHT TOWERS.



McDonough Associates Inc.
Engineers / Architects
130 East Randolph Street Chicago, Illinois 60601

FILE NAME =
D:\68\F12-SHT-RL3-2.dgn

USER NAME = TKIuegl
PLOT SCALE = 1:50
PLOT DATE = 2/3/2011

DESIGNED - JLW
DRAWN - CJM
CHECKED - KMY
DATE - 2/4/11

REVISED -
REVISED -
REVISED -
REVISED -

**STATE OF ILLINOIS
DEPARTMENT OF TRANSPORTATION**

**I-55 AT ARSENAL ROAD
PROPOSED ROADWAY LIGHTING PLAN-STAGE 3**

SCALE: 1" = 50' SHEET NO. 2 OF 11 SHEETS STA. TO STA.

F.A.I. RTE.	SECTION	COUNTY	TOTAL SHEETS	SHEET NO.
55	99-2HB-2B-1	WILL	756	372
CONTRACT NO. 60F12				
FED. ROAD DIST. NO. 1 ILLINOIS FED. AID PROJECT				