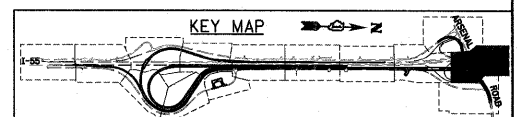
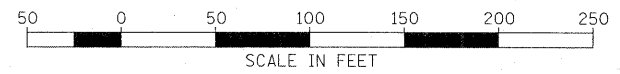
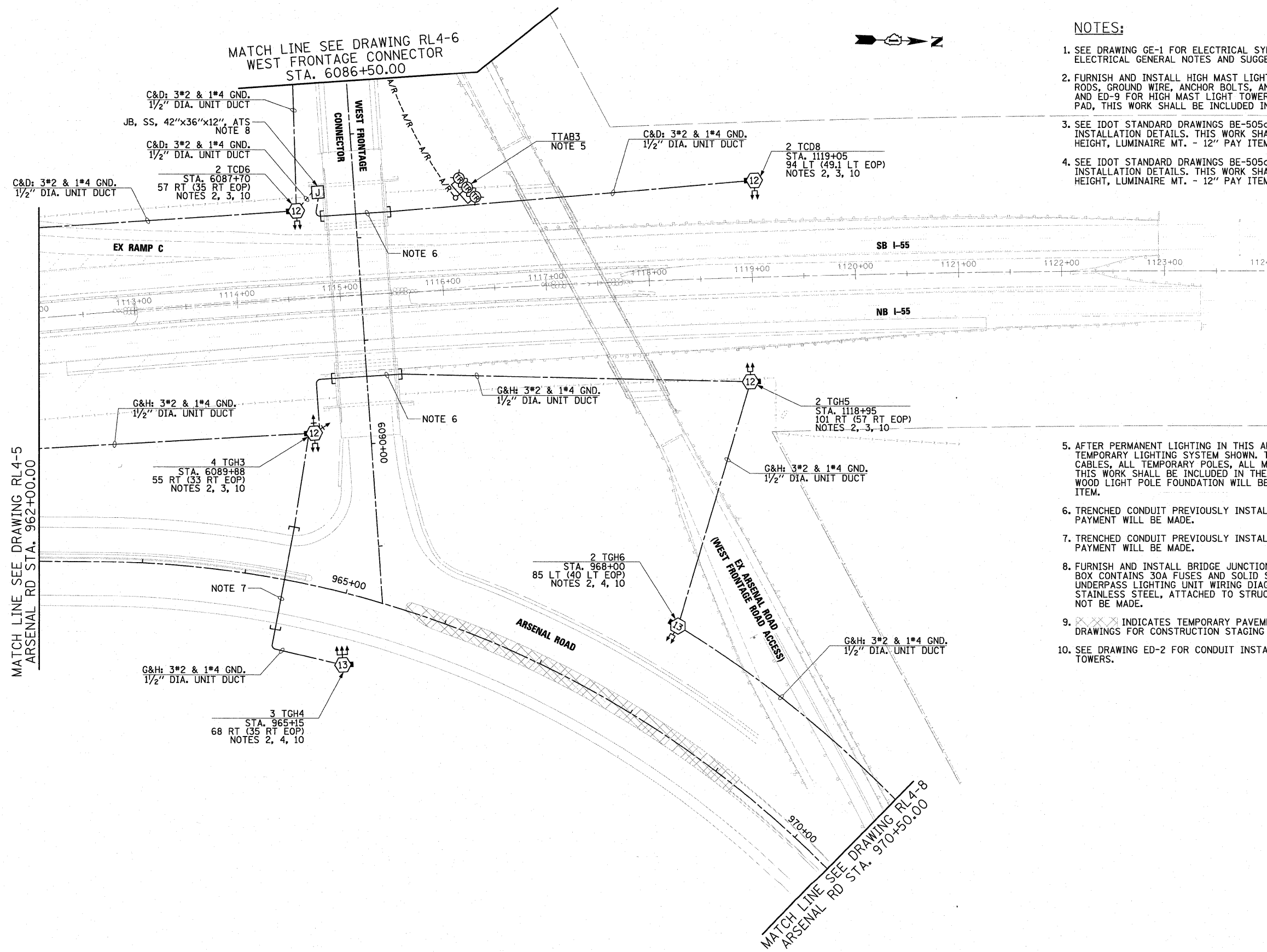


**NOTES:**

- SEE DRAWING GE-1 FOR ELECTRICAL SYMBOL LIST AND ABBREVIATIONS. SEE DRAWING GE-2 FOR ELECTRICAL GENERAL NOTES AND SUGGESTED LIGHTING PHASING NOTES.
- FURNISH AND INSTALL HIGH MAST LIGHT TOWER FOUNDATIONS SHOWN. INCLUDE GROUND WELLS, GROUND RODS, GROUND WIRE, ANCHOR BOLTS, AND LIGHT TOWER SERVICE PAD. SEE DRAWINGS S-2 THROUGH S-5, AND ED-9 FOR HIGH MAST LIGHT TOWER FOUNDATION DETAILS. EXCEPT FOR THE LIGHT TOWER SERVICE PAD, THIS WORK SHALL BE INCLUDED IN THE "LIGHT TOWER FOUNDATION, 54" DIAMETER" PAY ITEM.
- SEE IDOT STANDARD DRAWINGS BE-505a, BE-505b, AND BE-505c FOR HIGH MAST LIGHT TOWER INSTALLATION DETAILS. THIS WORK SHALL BE INCLUDED IN "LIGHT TOWER, 120 FOOT MOUNTING HEIGHT, LUMINAIRE MT. - 12" PAY ITEM. SEPARATE PAYMENT WILL NOT BE MADE.
- SEE IDOT STANDARD DRAWINGS BE-505a, BE-505b, AND BE-505c FOR HIGH MAST LIGHT TOWER INSTALLATION DETAILS. THIS WORK SHALL BE INCLUDED IN "LIGHT TOWER, 130 FOOT MOUNTING HEIGHT, LUMINAIRE MT. - 12" PAY ITEM. SEPARATE PAYMENT WILL NOT BE MADE.
- AFTER PERMANENT LIGHTING IN THIS AREA IS ENERGIZED AND ACCEPTED, DISCONNECT AND REMOVE THE TEMPORARY LIGHTING SYSTEM SHOWN. THE WORK INCLUDES, BUT IS NOT LIMITED TO, REMOVAL OF AERIAL CABLES, ALL TEMPORARY POLES, ALL MAST ARMS, LUMINAIRE MOUNTING BRACKETS AND ALL LUMINAIRES. THIS WORK SHALL BE INCLUDED IN THE "REMOVAL OF LIGHTING UNIT, SALVAGE" PAY ITEM. REMOVAL OF WOOD LIGHT POLE FOUNDATION WILL BE PAID SEPARATELY UNDER "REMOVAL OF POLE FOUNDATION" PAY ITEM.
- TRENCHED CONDUIT PREVIOUSLY INSTALLED IN STAGE 2 AS SHOWN ON DRAWING RL2-12. NO ADDITIONAL PAYMENT WILL BE MADE.
- TRENCHED CONDUIT PREVIOUSLY INSTALLED IN STAGE 3 AS SHOWN ON DRAWING RL3-8. NO ADDITIONAL PAYMENT WILL BE MADE.
- FURNISH AND INSTALL BRIDGE JUNCTION BOX. SEE DRAWING ED-4 FOR INSTALLATION DETAILS. JUNCTION BOX CONTAINS 30A FUSES AND SOLID SLUG FOR NEUTRAL CONDUCTOR. SEE DRAWING UL-1 FOR TYPICAL UNDERPASS LIGHTING UNIT WIRING DIAGRAM. THIS WORK SHALL BE INCLUDED IN THE "JUNCTION BOX, STAINLESS STEEL, ATTACHED TO STRUCTURE, 42" X 36" X 12" PAY ITEM. SEPARATE PAYMENT WILL NOT BE MADE.
- XXXXX INDICATES TEMPORARY PAVEMENT INSTALLATION LIMITS. SEE MAINTENANCE OF TRAFFIC DRAWINGS FOR CONSTRUCTION STAGING INFORMATION.
- SEE DRAWING ED-2 FOR CONDUIT INSTALLATION DETAILS FOR GROUND MOUNTED HIGH MAST LIGHT TOWERS.



**McDonough Associates Inc.**  
 Engineers / Architects  
 130 East Randolph Street, Chicago, Illinois 60601

FILE NAME = D:\60\F12-SHT-RL4-7.dgn  
 USER NAME = TKluemel  
 DESIGNED - JLW  
 DRAWN - CJM  
 CHECKED - KMY  
 DATE - 2/4/11

REVISIONS:  
 REVISIONS -  
 REVISIONS -  
 REVISIONS -  
 REVISIONS -

**STATE OF ILLINOIS**  
**DEPARTMENT OF TRANSPORTATION**

**I-55 AT ARSENAL ROAD**  
**PROPOSED ROADWAY LIGHTING PLAN-STAGE 4**

SCALE: 1" = 50'    SHEET NO. 7 OF 8 SHEETS    STA.    TO STA.

F.A.I. RTE.	SECTION	COUNTY	TOTAL SHEETS	SHEET NO.
55	99-2HB-28-1	WILL	756	388
CONTRACT NO. 60F12				
FED. ROAD DIST. NO. 1 ILLINOIS FED. AID PROJECT				