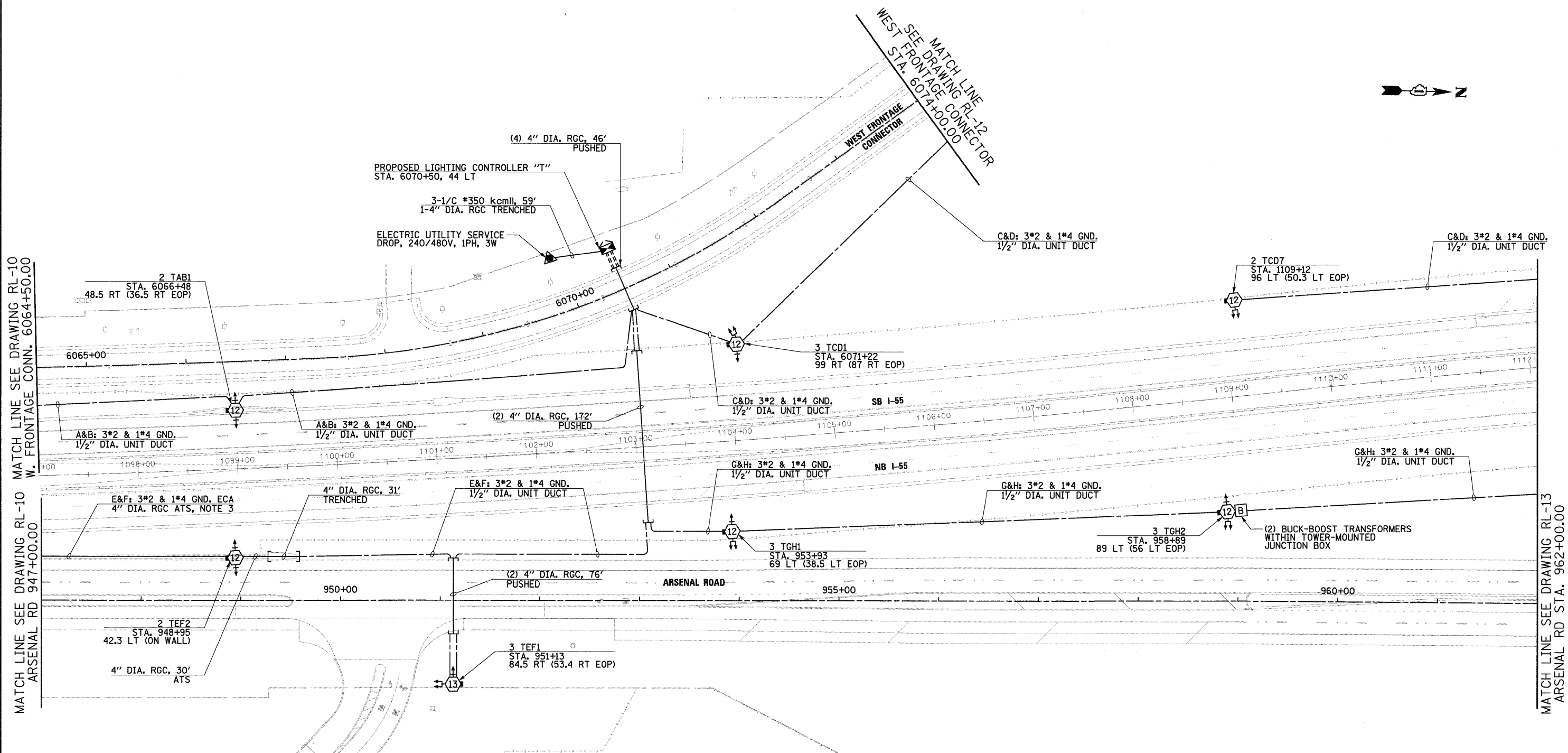


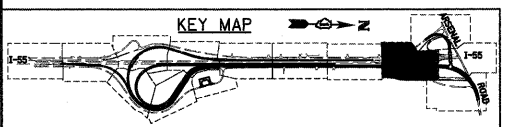
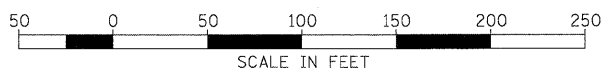


MATCH LINE SEE DRAWING RL-10 W. FRONTAGE CONN. 6064+50.00

MATCH LINE SEE DRAWING RL-13 ARSENAL RD STA. 962+00.00



- NOTES:**
- SEE DRAWING GE-1 FOR ELECTRICAL SYMBOL LIST AND ABBREVIATIONS.
 - SEE DRAWINGS S-1 AND S-3 FOR HIGH MAST LIGHT TOWER FOUNDATION TABLES.
 - LENGTH NOT SHOWN. SEE DRAWING RL-10 FOR RUN LENGTH.



McDonough Associates Inc.
 Engineers / Architects
 130 East Randolph Street, Chicago, Illinois 60601

FILE NAME = D:\B0F12-SHT-RL-11.dgn	USER NAME = TKLuegel	DESIGNED - JLW	REVISED -
		DRAWN - CJM	REVISED -
	PLOT SCALE = 1:50	CHECKED - KMY	REVISED -
	PLOT DATE = 2/3/2011	DATE - 2/4/11	REVISED -

STATE OF ILLINOIS
DEPARTMENT OF TRANSPORTATION

I-55 AT ARSENAL ROAD
PROPOSED ROADWAY LIGHTING PLAN FINAL CONDITIONS

SCALE: 1" = 50' SHEET NO. 11 OF 14 SHEETS STA. TO STA.

F.A.I. RTE.	SECTION	COUNTY	TOTAL SHEETS	SHEET NO.
55	99-2HB-2B-1	WILL	756	400
CONTRACT NO. 60F12				
FED. ROAD DIST. NO. 1 ILLINOIS FED. AID PROJECT				