

**PROPOSED LIGHTING CONTROLLER "T" LOAD TABLE**

CIRCUIT	RED PHASE		CIRCUIT	BLACK PHASE	
	AMPS	WATTS		AMPS	WATTS
A	--	--	B	--	--
C	--	--	D	--	--
E	--	--	F	--	--
G	--	--	H	--	--
I	3.5	840	J	--	--
K	7.0	1680	L	7.0	1680
M	14.0	3360	N	10.5	2520
O	--	--	P	--	--
Q	--	--	R	--	--
S	--	--	T	--	--
U	--	--	V	--	--
W	--	--	X	--	--
<b>TOTAL</b>	<b>24.5</b>	<b>5880</b>	<b>TOTAL</b>	<b>17.5</b>	<b>4200</b>

**NOTES:**

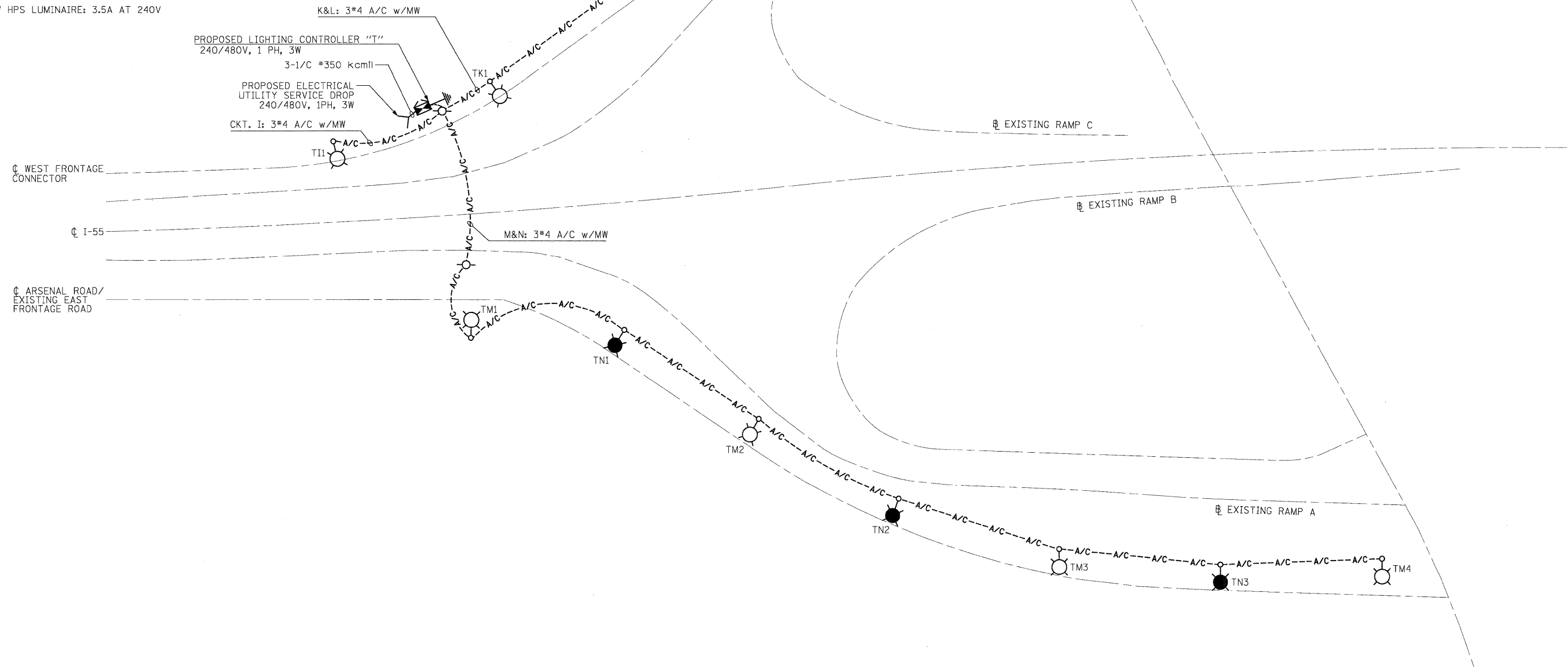
- SEE DRAWING GE-1 FOR ELECTRICAL SYMBOL LIST AND ABBREVIATIONS. SEE DRAWING GE-2 FOR ELECTRICAL GENERAL NOTES AND SUGGESTED LIGHTING PHASING NOTES.
- CIRCUIT AND CABLE CALLOUTS ARE TYPICAL UNLESS NOTED OTHERWISE.
- SEE IDOT STANDARD DRAWING BE-800 FOR TEMPORARY LIGHT POLE ATTACHMENT DETAIL.

**LEGEND:**

- EXISTING HIGH MAST LIGHT TOWER  
750W HPS LUMINAIRES (TYP.)  
(BLACK PHASE - SOLID SYMBOLS,  
RED PHASE - OPEN SYMBOLS)
- HIGH MAST TOWER DESIGNATION
- PROPOSED LIGHTING CONTROLLER
- GROUND FIELD
- EXISTING ELECTRIC UTILITY SERVICE DROP
- TEMPORARY LIGHTING UNIT, 750 HPS  
LUMINAIRE (BLACK PHASE-SOLID SYMBOL,  
RED PHASE-OPEN SYMBOL)
- A/C-- TEMPORARY AERIAL CABLE
- PROPOSED ELECTRIC UTILITY SERVICE DROP
- BUCK-BOOST TRANSFORMER ENCLOSURE

LOAD TABULATION IS BASED ON THE FOLLOWING:

750W HPS LUMINAIRE: 3.5A AT 240V



**McDonough Associates Inc.**  
 Engineers / Architects  
 130 East Randolph Street, Chicago, Illinois 60601

FILE NAME = D:\160F12-SHT-EW1-2.dgn	USER NAME = TKLuagel	DESIGNED - JLW	REVISED -
		DRAWN - CJM	REVISED -
		CHECKED - KMY	REVISED -
		DATE - 2/4/11	REVISED -

**STATE OF ILLINOIS**  
**DEPARTMENT OF TRANSPORTATION**

**I-55 AT ARSENAL ROAD**  
**PROPOSED LIGHTING CONTROLLER "T" STAGE 1 SINGLE LINE DIAGRAM**

SCALE: NONE      SHEET NO. 1 OF 1 SHEETS      STA.      TO STA.

F.A.I R.T.E. 55	SECTION 99-2HB-2B-1	COUNTY WILL	TOTAL SHEETS 756	SHEET NO. 408
CONTRACT NO. 60F12			ILLINOIS FED. AID PROJECT	