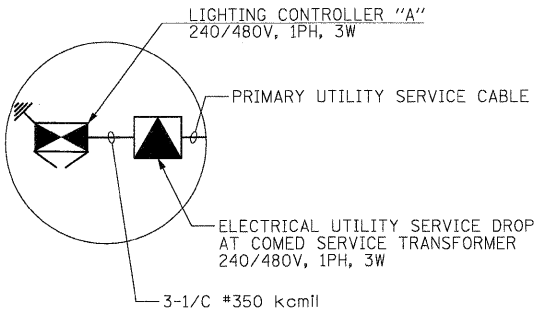


LEGEND:

- PROPOSED HIGH MAST LIGHT TOWER
750W HPS LUMINAIRE (TYP. U.N.O.)
(BLACK PHASE - SOLID SYMBOLS,
RED PHASE - OPEN SYMBOLS)
- 12 120FT
13 130FT
HIGH MAST TOWER DESIGNATION
- PROPOSED UNDERPASS LIGHTING UNIT
70W HPS LUMINAIRE (TYP. U.N.O.)
(BLACK PHASE - SOLID SYMBOLS,
RED PHASE - OPEN SYMBOLS)
- LIGHTING CONTROLLER
- GROUND FIELD
- ELECTRIC UTILITY SERVICE DROP
- BUCK-BOOST TRANSFORMER ENCLOSURE



LIGHTING CONTROLLER "A" LOAD TABLE					
CIRCUIT	RED PHASE		CIRCUIT	BLACK PHASE	
	AMPS	WATTS		AMPS	WATTS
A*	37.52	9005	B*	37.52	9005
C*	44.2	10609	D*	44.2	10609
E*	28.95	6947	F*	29.26	7022
G	31.5	7560	H	31.5	7560
I	21	5040	J	21	5040
K*	25.44	6107	L	21.94	5267
M	--	--	N	--	--
O	--	--	P	--	--
Q	--	--	R	--	--
S	21.86	5246	T	25.36	6086
U	--	--	V	--	--
W	--	--	X	--	--
TOTAL	210.47	50,514	TOTAL	210.78	50,589

- NOTES:**
- SEE DRAWING GE-1 FOR ELECTRICAL SYMBOL LIST AND ABBREVIATIONS. SEE DRAWING GE-2 FOR ELECTRICAL GENERAL NOTES AND SUGGESTED LIGHTING PHASING NOTES.
 - CIRCUIT AND CABLE CALLOUTS ARE TYPICAL UNLESS NOTED OTHERWISE.
 - BUCK-BOOST TRANSFORMERS INSIDE OF TOWER MOUNTED, SS, NEMA 4X JUNCTION BOXES. SEE DRAWING RL2-5, NOTE 6 FOR TYPICAL BUCK-BOOST TRANSFORMER INFORMATION.
 - UNDERPASS LIGHTING UNITS WIRED WITH 3*10 AND 1*10 GND IN 1" PVCC RGC FROM UNIT TO UNIT. SEE DRAWING UL-1 FOR TYPICAL UNDERPASS LIGHTING UNIT WIRING DIAGRAM.
 - AMPS COLUMN INCLUDES ADDITIONAL AMPERAGE ON PRIMARY SIDE OF BUCK-BOOST TRANSFORMERS.
 - SEE IDOT STANDARD DRAWING BE-505c FOR HIGH MAST POLE WIRING DIAGRAM.
 - CKTS E&F: 3*2 & 1*4 GND, ECA.

LOAD TABULATION IS BASED ON THE FOLLOWING:
750W HPS (HMT) LUMINAIRE: 3.5A AT 240V
70W HPS UNDERPASS LUMINAIRE: 0.43A AT 240V
** SEE NOTE 5

