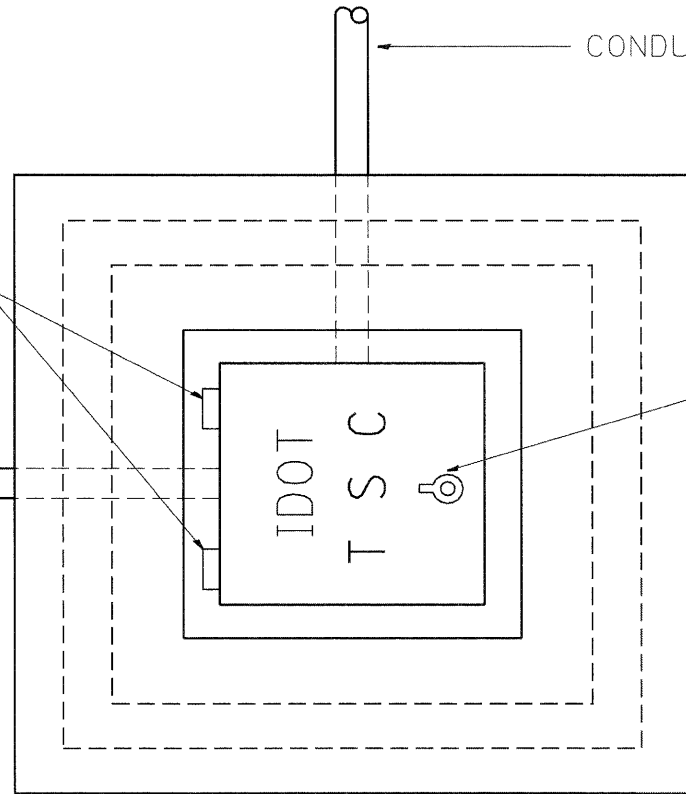


TYPE "T" HINGES REQUIRED ONLY ON ON HEAVY DUTY SPECIAL.

CONDUIT TYP.

CONDUIT TYP.

TYPE "G" HANDLE FOR BOTH HDHH AND HDHH SPECIAL

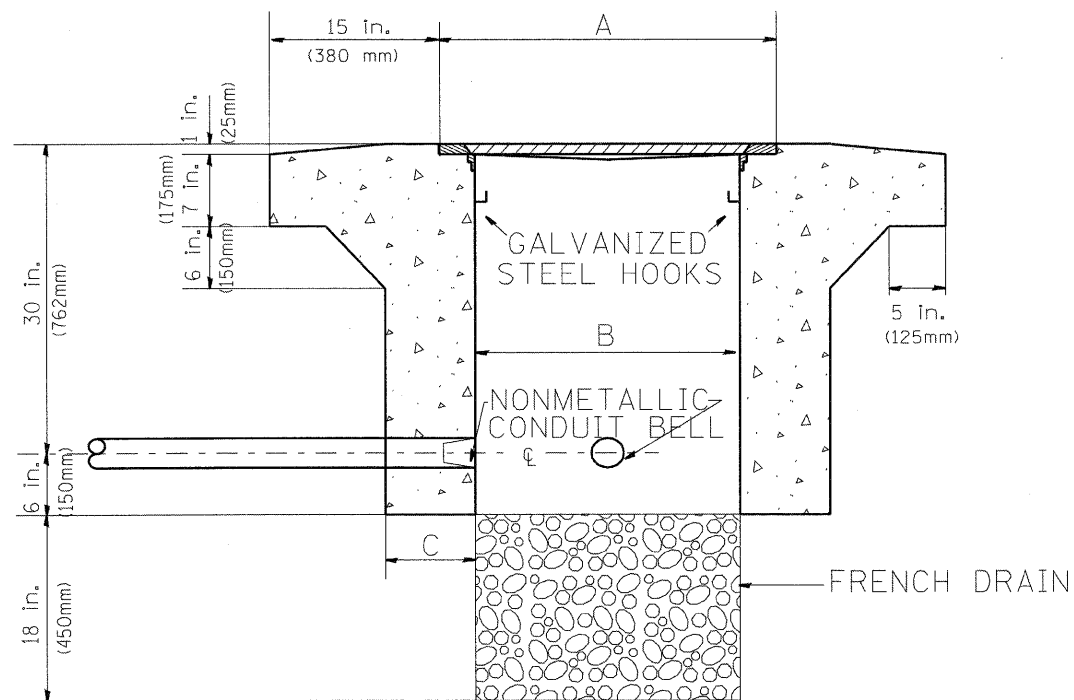


PLAN

HEAVY DUTY HANDHOLE MINIMUM DIMENSIONS (UNHINGED)

A	28" (711 mm)
B	22" (559 mm)
C	8" (200 mm)

(FRAME AND COVER 260 LBS. (118 Kg.) MIN.)



ELEVATION

HEAVY DUTY HANDHOLE SPECIAL MINIMUM DIMENSIONS

A	31.5" (800 mm)
B	30" (762 mm)
C	10" (250 mm)

(FRAME AND COVER 405 LBS. (184 Kg. (405))

PC CONCRETE - HEAVY DUTY HAND HOLE

FILE NAME = C:\Projects\TSC\TYPICALS\TSC\TYP08.dgn	USER NAME = mezag	DESIGNED - R.L.	REVISED - 04/97	<b>STATE OF ILLINOIS DEPARTMENT OF TRANSPORTATION TRAFFIC SYSTEMS CENTER</b>	<b>PC CONCRETE - HEAVY DUTY HAND HOLE</b>			F.A. RTE. 55	SECTION 99-21B-2B-1	COUNTY WILL	TOTAL SHEETS 756	SHEET NO. 443
PLOT SCALE = 100.0000' / IN.	CHECKED - R.L.	REVISOR -	REVISOR -					CONTRACT NO. 60F12				
PLOT DATE = 6/30/2010	DATE - 09/11/96	REVISOR -	REVISOR -		SCALE: NONE	SHEET NO. OF SHEETS	STA. TO STA.	FED. ROAD DIST. NO. 1 ILLINOIS FED. AID PROJECT				
<b>TRAFFIC SYSTEMS CENTER (TY-1TSC-400#15)</b>												