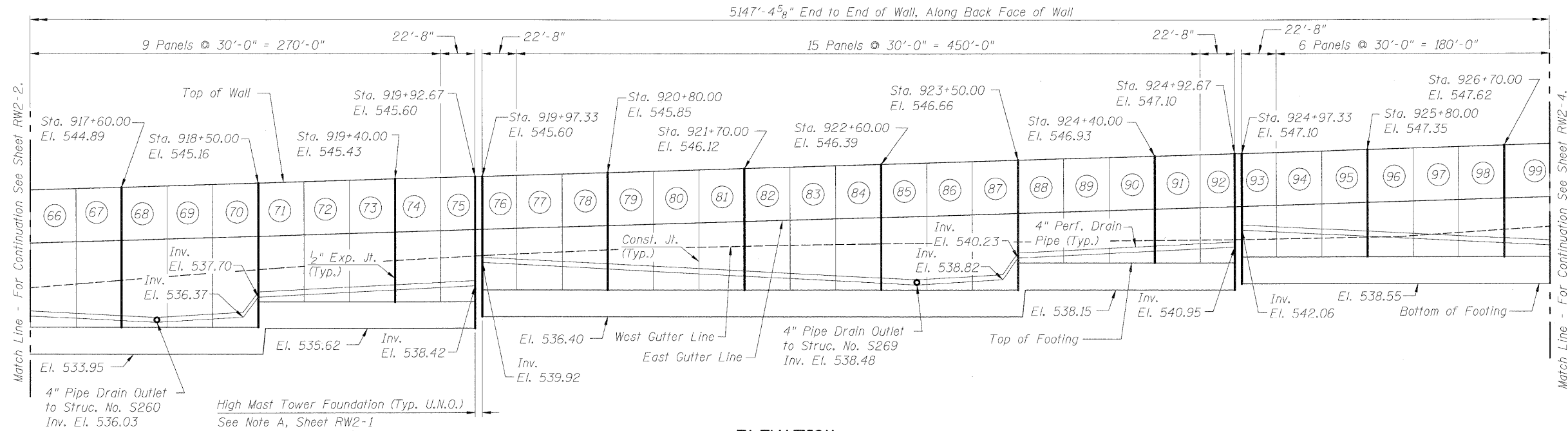
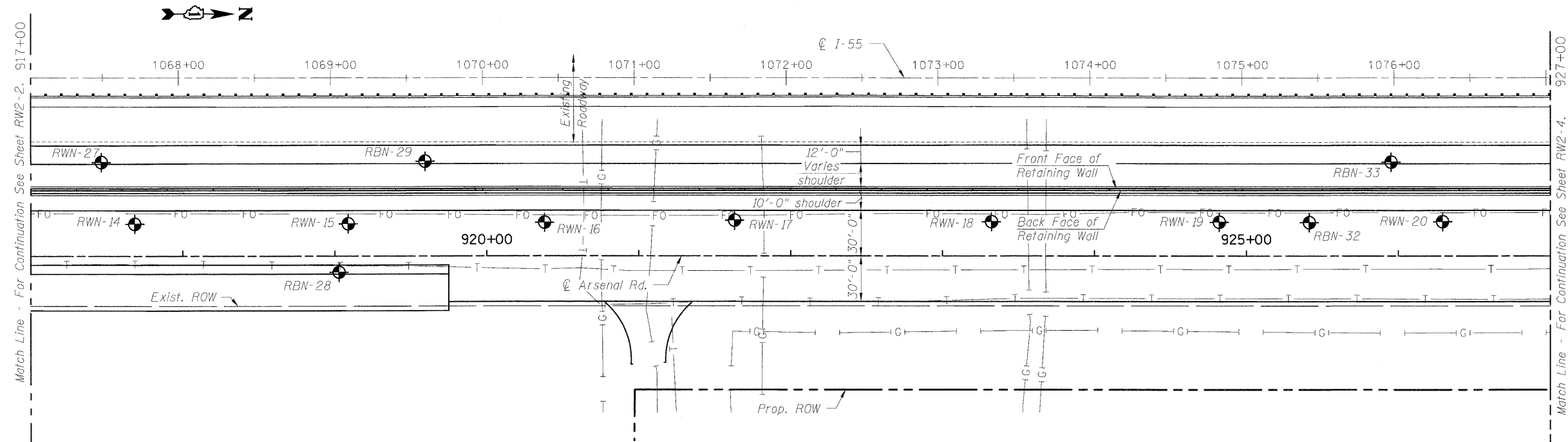


STATE OF ILLINOIS  
DEPARTMENT OF TRANSPORTATION



**ELEVATION**

(Looking at Back Face of Wall)



**PLAN**

**NOTES:**

- Offsets are measured from the C of Arsenal Rd. u.n.o.
- Construction joints shall be placed at 30' on center and expansion joints shall be placed at 90' on center, u.n.o.

**LEGEND:**

- ◆ = Soil Boring
- ① = Panel No.

DESIGNED	PMH
CHECKED	MJL
DRAWN	PMH
CHECKED	BB

**McDonough Associates Inc.**  
Engineers / Architects  
130 East Randolph Street  
Chicago, Illinois 60601  
(312) 946-8600

SHEET NO. RW2-3 SHEETS RW2-31	F.A.I. RTE.	SECTION	COUNTY	TOTAL SHEETS	SHEET NO.
	55	(99-1&2) R-6	WILL	756	467
FED. ROAD DIST. NO.			ILLINOIS FED. AID PROJECT		
CONTRACT NO. 60F12					

**GENERAL PLAN & ELEVATION-3**  
**STRUCTURE NO. 099-W027**