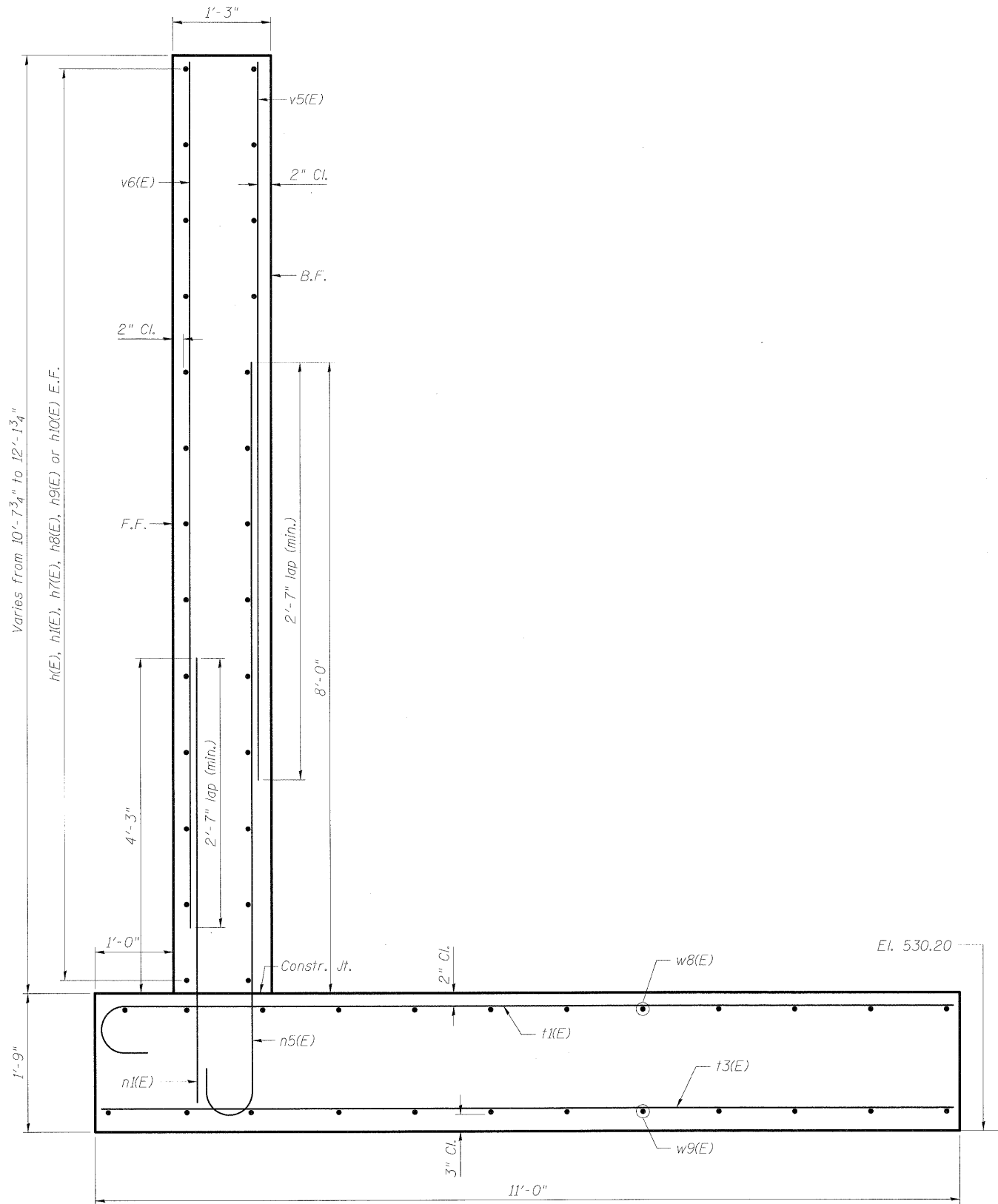


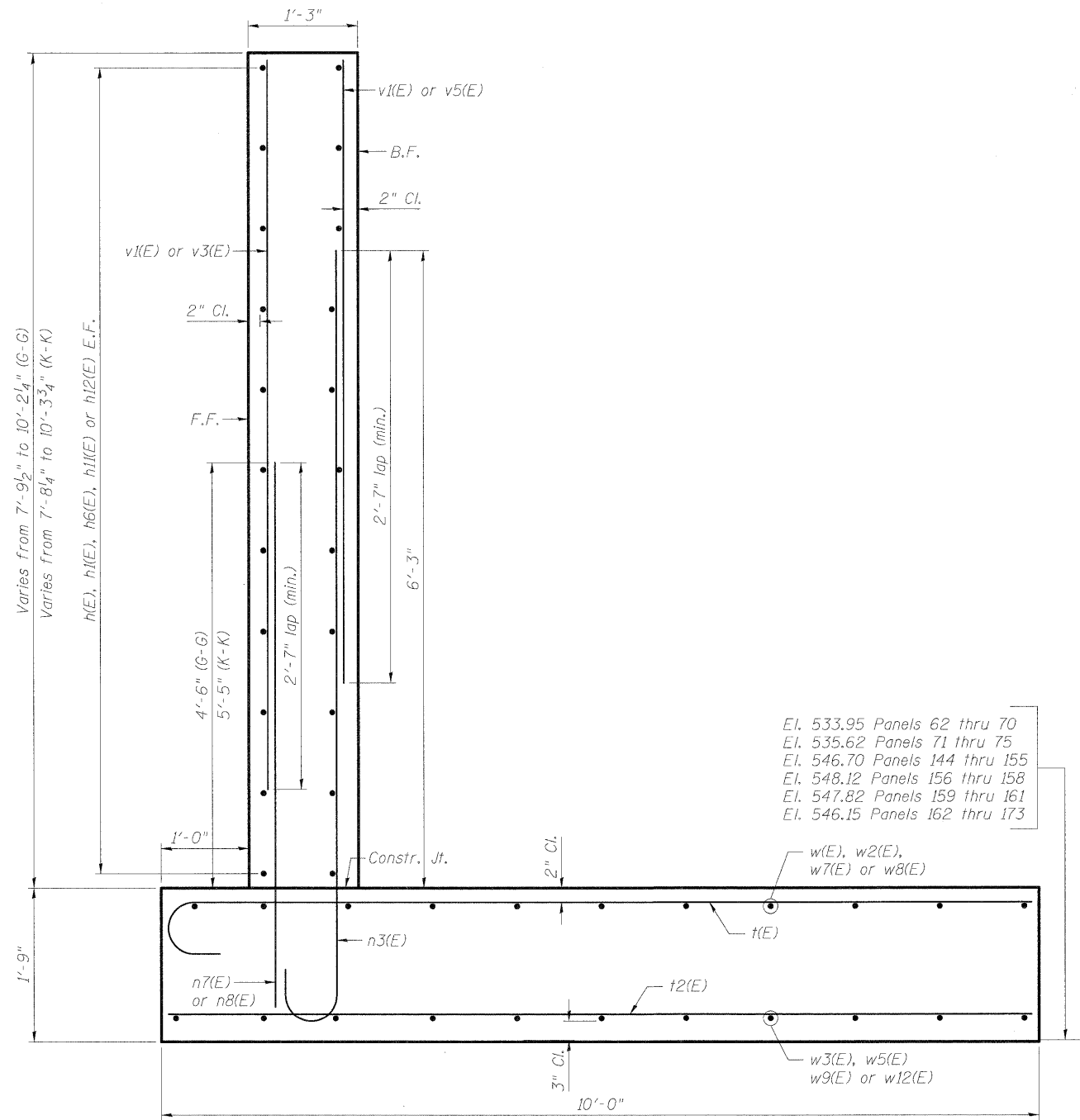
STATE OF ILLINOIS
DEPARTMENT OF TRANSPORTATION



SECTION E-E
PANELS 42 THRU 58

Max. Soil Pressure = 3.12 ksf

DESIGNED	PMH
CHECKED	MJL
DRAWN	PMH
CHECKED	MJL



El. 533.95 Panels 62 thru 70
El. 535.62 Panels 71 thru 75
El. 546.70 Panels 144 thru 155
El. 548.12 Panels 156 thru 158
El. 547.82 Panels 159 thru 161
El. 546.15 Panels 162 thru 173

SECTION G-G & SECTION K-K
PANELS 62 THRU 75 & 159 THRU 173 (G-G)
PANELS 144 THRU 158 (K-K)

Max. Soil Pressure = 2.95 ksf

NOTES:

1. For Bill of Material see Sheet RW2-19.
2. Reinforcement Bars designated (E) shall be Epoxy Coated.

LEGEND:

- F.F. = Front Face of Wall
B.F. = Back Face of Wall
E.F. = Each Face of Wall

SECTION AND DETAILS
STRUCTURE NO. 099-W027



McDonough Associates Inc.
Engineers / Architects
130 East Randolph Street
Chicago, Illinois 60601
(312) 946-8600

SHEET NO. RW2-17 SHEETS RW2-31	F.A.I. RTE.	SECTION	COUNTY	TOTAL SHEETS	SHEET NO.
	55	(99-1&2) R-6	WILL	756	481
FED. ROAD DIST. NO.			ILLINOIS	FED. AID PROJECT	
CONTRACT NO. 60F12					