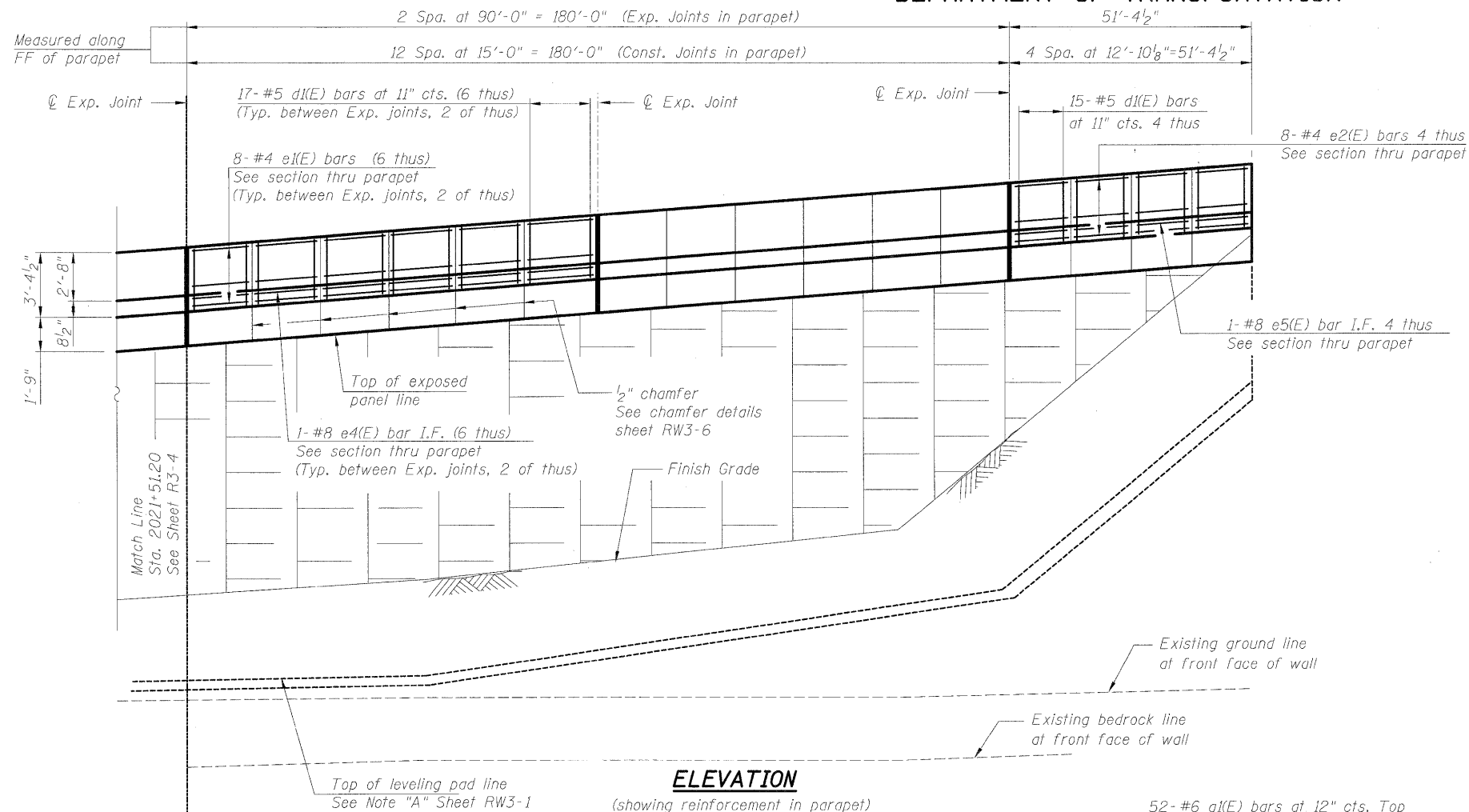


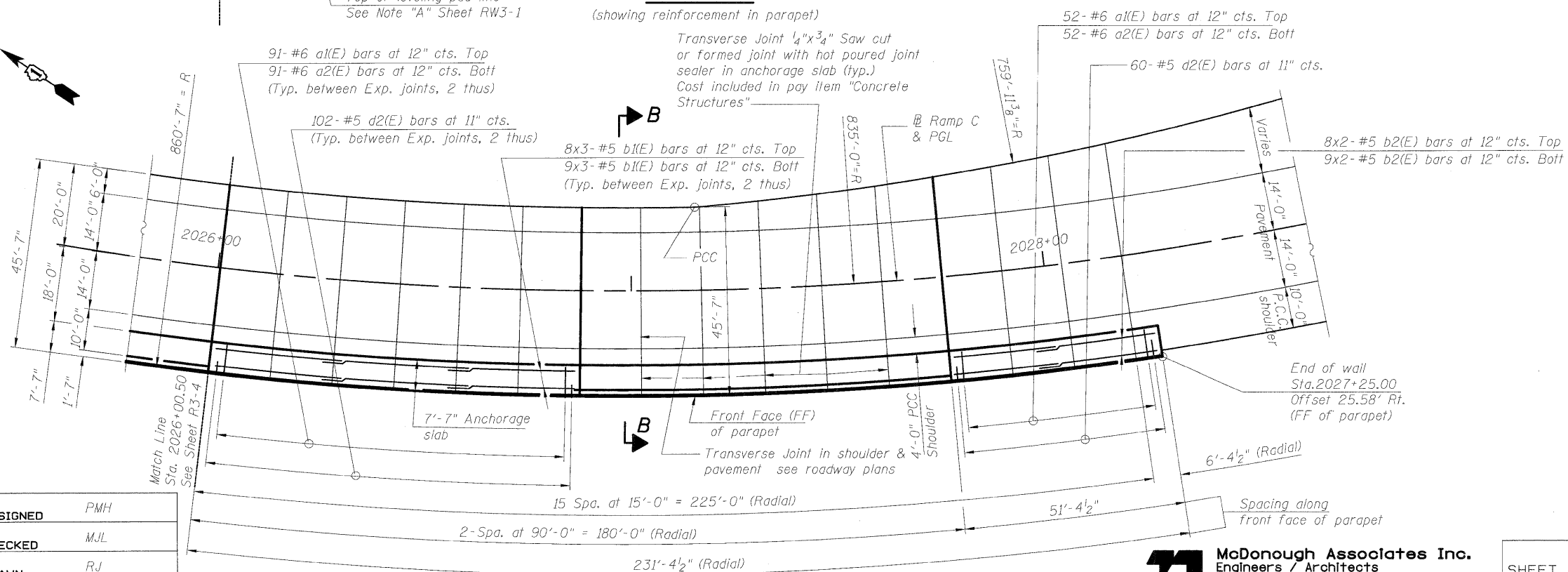
STATE OF ILLINOIS
DEPARTMENT OF TRANSPORTATION



ELEVATION

(showing reinforcement in parapet)

Transverse Joint 1/4"x3/4" Saw cut or formed joint with hot poured joint sealer in anchorage slab (typ.)
Cost included in pay item "Concrete Structures"



PLAN

(showing reinforcement in anchorage slab)

Only Parapet and Anchorage Slab are part of this Contract

Note:
Slip forming of the parapet is not allowed.

Note:
Work this sheet with sheets RW3-1 thru RW3-4.

DESIGNED	PMH
CHECKED	M.J.L.
DRAWN	RJ
CHECKED	BKB

McDonough Associates Inc.
Engineers / Architects
130 East Randolph Street
Chicago, Illinois 60601
(312) 946-8600

MSE WALL - PLAN & ELEVATION
STRUCTURE NO. 099-W028

SHEET NO.	F.A.I. RTE.	SECTION	COUNTY	TOTAL SHEETS	SHEET NO.
RW3-5	55	(99-1&2) AC-3	WILL	756	500
SHEETS					
RW3-12					
CONTRACT NO. 60C31					
FED. ROAD DIST. NO. 1 ILLINOIS FED. AID PROJECT					