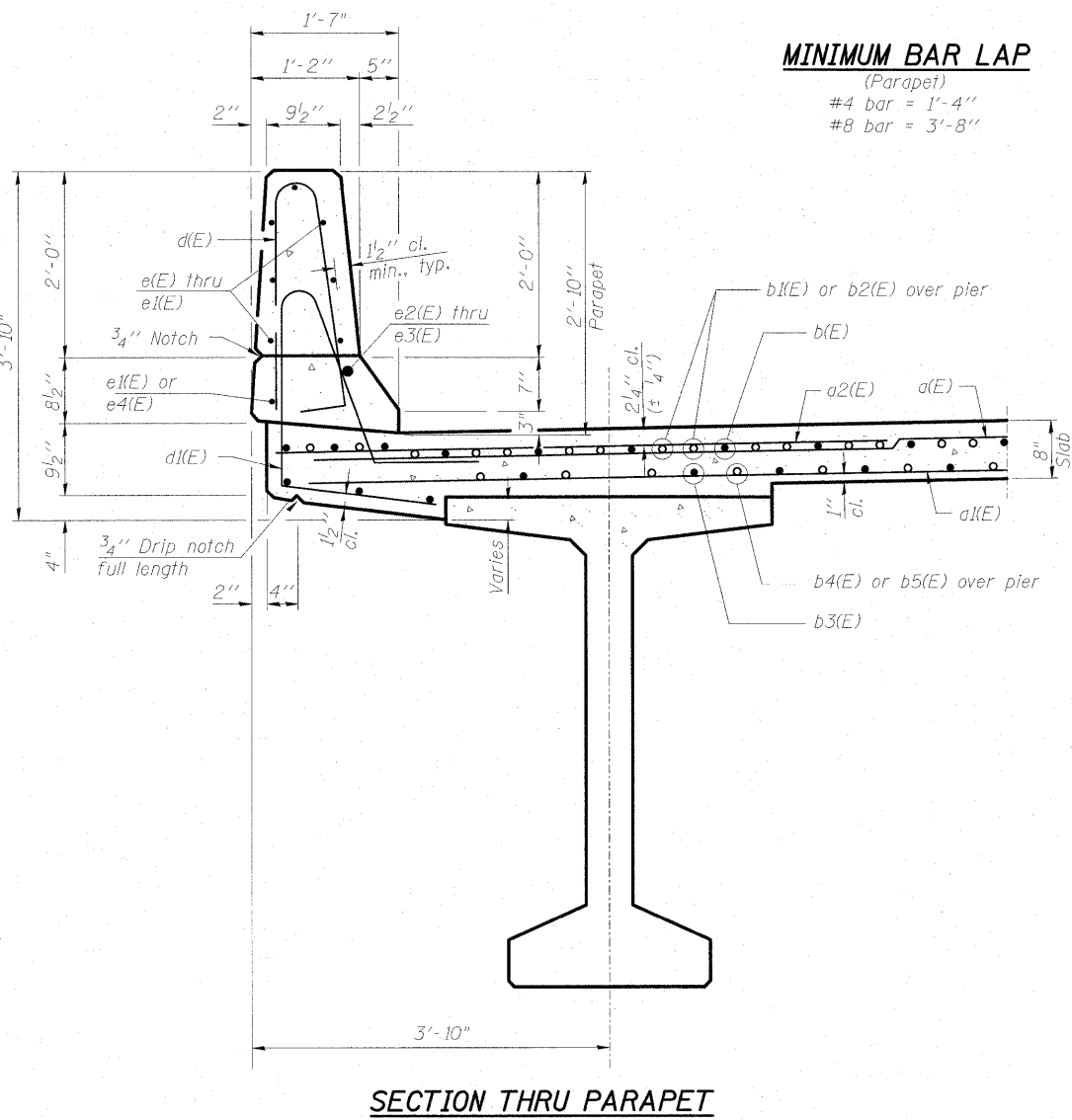
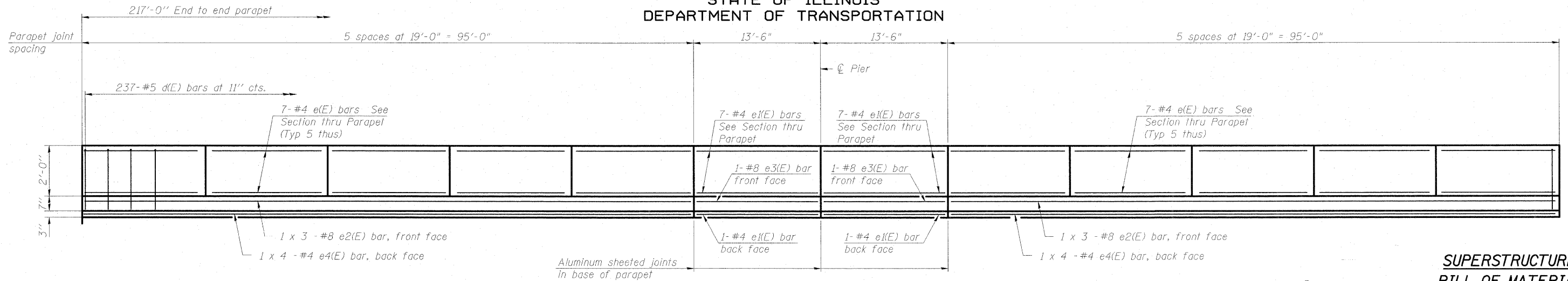
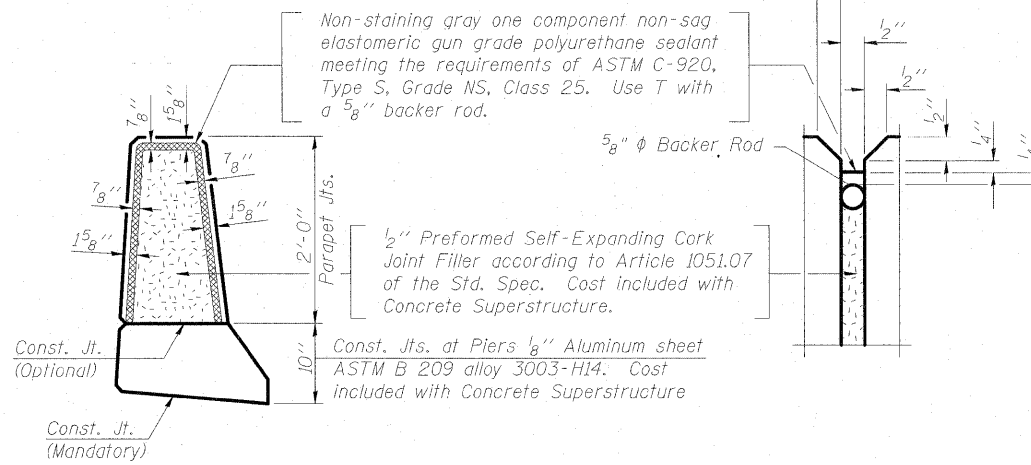


STATE OF ILLINOIS
DEPARTMENT OF TRANSPORTATION

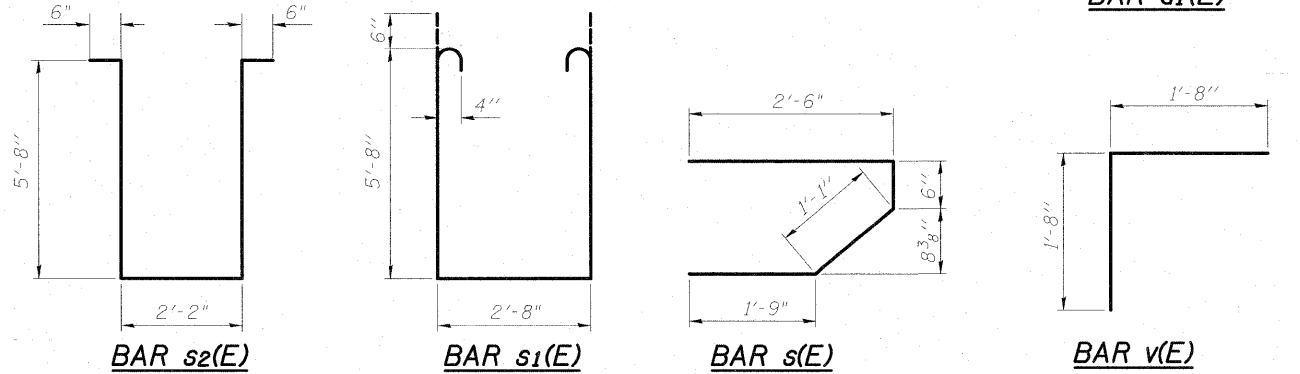


DESIGNED	MJL
CHECKED	PMH
DRAWN	RJ
CHECKED	BKB

INSIDE ELEVATION OF PARAPET



PARAPET JOINT DETAILS



SUPERSTRUCTURE
BILL OF MATERIAL

Bar	No.	Size	Length	Shape
d(E)	434	#5	33'-6"	—
a ₁ (E)	580	#5	29'-4"	—
a ₂ (E)	868	#6	6'-6"	—
a ₃ (E)	434	#5	25'-3"	—
b(E)	480	#6	29'-6"	—
b ₁ (E)	108	#6	36'-0"	—
b ₂ (E)	108	#6	12'-7"	—
b ₃ (E)	504	#5	26'-1"	—
b ₄ (E)	58	#5	36'-0"	—
b ₅ (E)	58	#5	12'-2"	—
d ₁ (E)	474	#5	7'-4"	⌒
e(E)	140	#4	18'-8"	—
e ₁ (E)	32	#4	13'-2"	—
e ₂ (E)	12	#8	34'-0"	—
e ₃ (E)	4	#8	13'-2"	—
e ₄ (E)	16	#4	24'-9"	—
m ₁ (E)	24	#6	29'-11"	—
m ₂ (E)	42	#6	11'-0"	—
m ₃ (E)	24	#6	5'-9"	—
m ₄ (E)	4	#6	2'-5"	—
m ₅ (E)	36	#4	7'-5"	—
m ₆ (E)	7	#8	6'-2"	—
s(E)	108	#5	5'-10"	⌒
s ₁ (E)	72	#4	15'-0"	⌒
s ₂ (E)	30	#4	14'-6"	⌒
v(E)	112	#5	3'-4"	⌒
Reinforcement Bars, Epoxy Coated		Pound	112,840	
Concrete Superstructure		Cu. Yd.	488.7	

Bars indicated thus 1 x 3 - #5 etc. indicates 1 line of bars with 3 lengths per line.

DECK DETAILS
STRUCTURE NO. 099-0347

McDonough Associates Inc.
Engineers / Architects
130 East Randolph Street
Chicago, Illinois 60601
(312) 946-8600

SHEET NO. SF10	F.A.I. RTE.	SECTION	COUNTY	TOTAL SHEETS	SHEET NO.
	55	92-2HB-2B-1	WILL	756	512
SF24 SHEETS	SN 099-0347		CONTRACT NO. 60F12		
FED. ROAD DIST. NO.		ILLINOIS	FED. AID PROJECT		