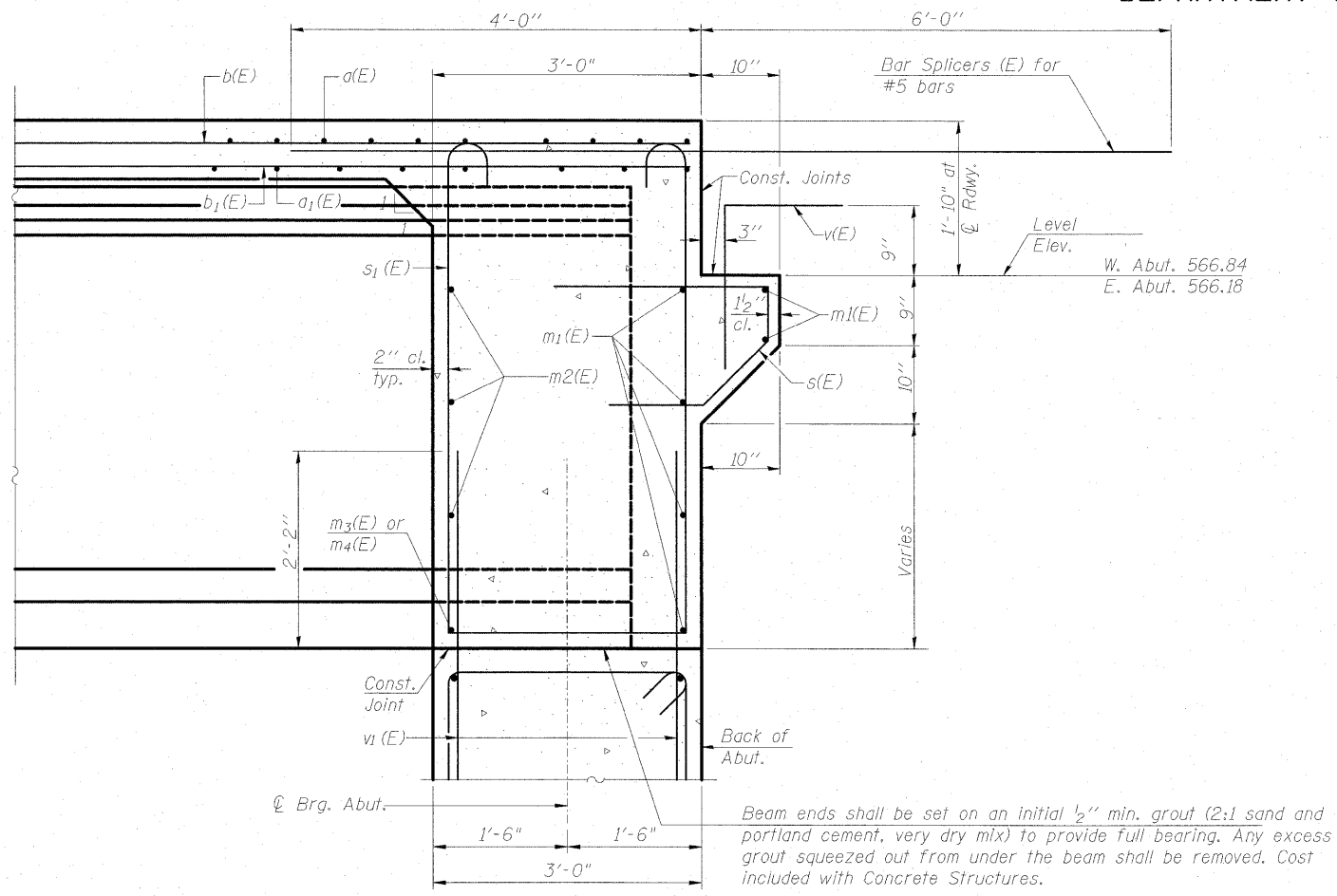
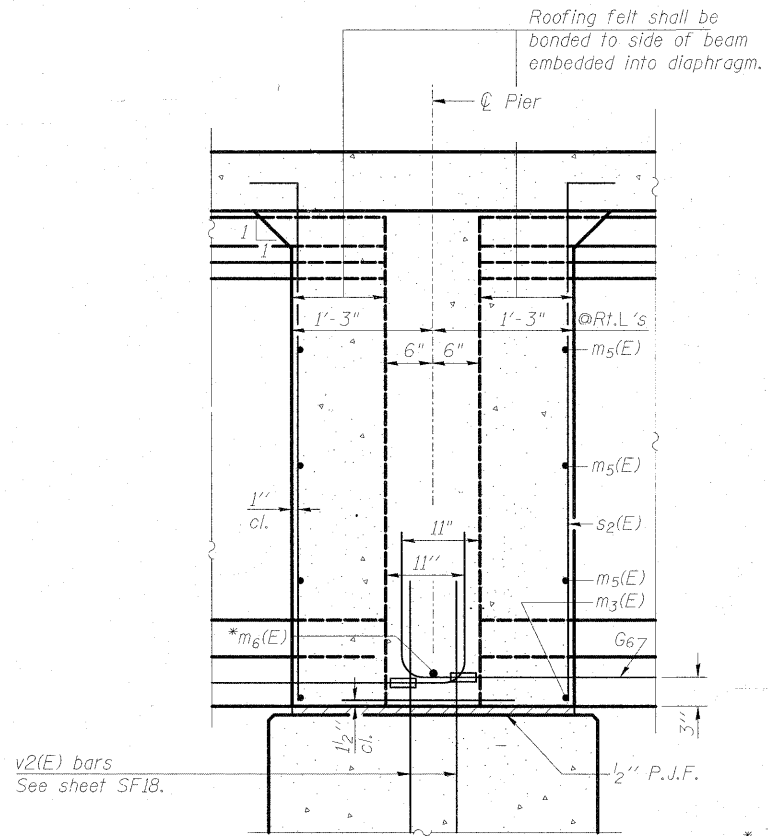


STATE OF ILLINOIS  
DEPARTMENT OF TRANSPORTATION

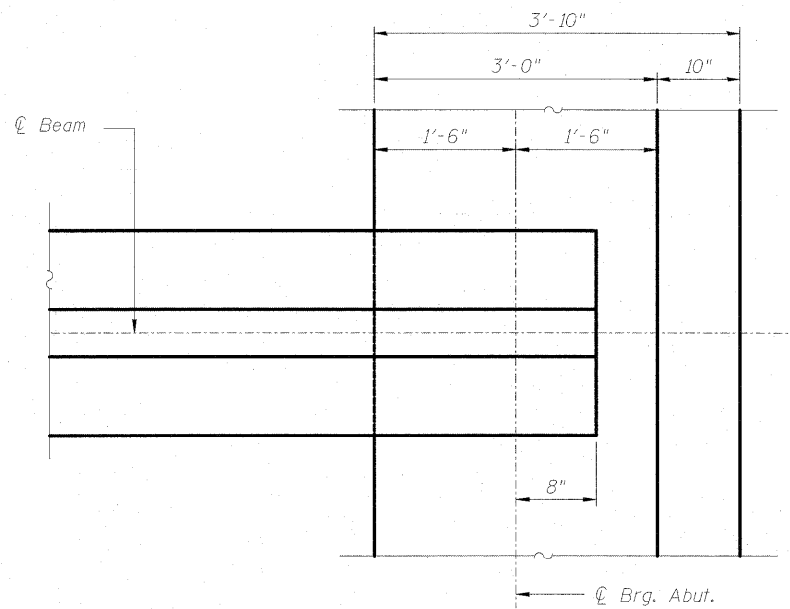


**SECTION A-A**

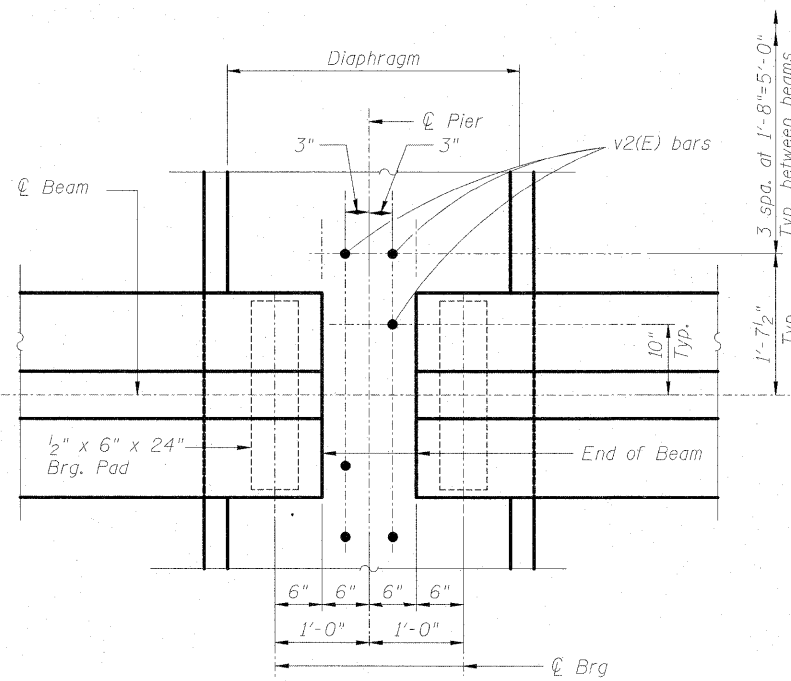


**SECTION B-B**

\* Tightly fasten the #8 bars together with No. 9 wire ties.



**PLAN VIEW  
DETAIL A**



**PLAN VIEW  
DETAIL B**

Note:  
See sheet SF11 for location of Sections A-A and B-B.  
See sheet SF13 for location of Details A and B.

DESIGNED	MJL
CHECKED	PMH
DRAWN	RJ
CHECKED	KBK



**McDonough Associates Inc.**  
Engineers / Architects  
130 East Randolph Street  
Chicago, Illinois 60601  
(312) 946-8600

SHEET NO. SF12	F.A.I. RTE.	SECTION	COUNTY	TOTAL SHEETS	SHEET NO.
	55	92-2HB-2B-1	WILL	756	514
SF24 SHEETS	SN 099-0347		CONTRACT NO. 60F12		
	FED. ROAD DIST. NO.	ILLINOIS	FED. AID PROJECT		

**DIAPHRAGM SECTIONS & DETAILS  
STRUCTURE NO. 099-0347**