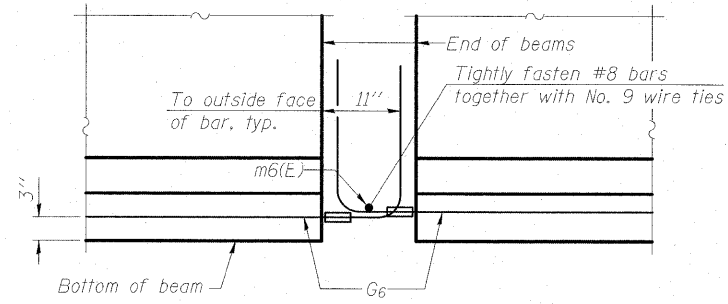
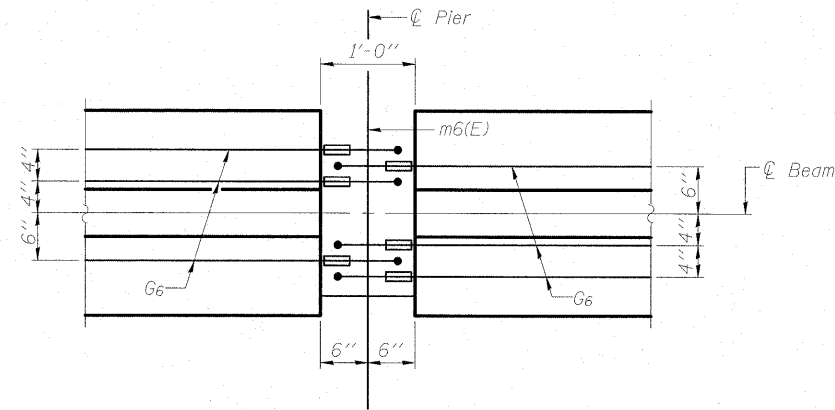


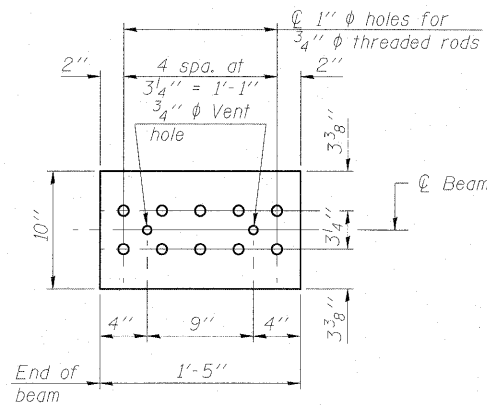
STATE OF ILLINOIS
DEPARTMENT OF TRANSPORTATION



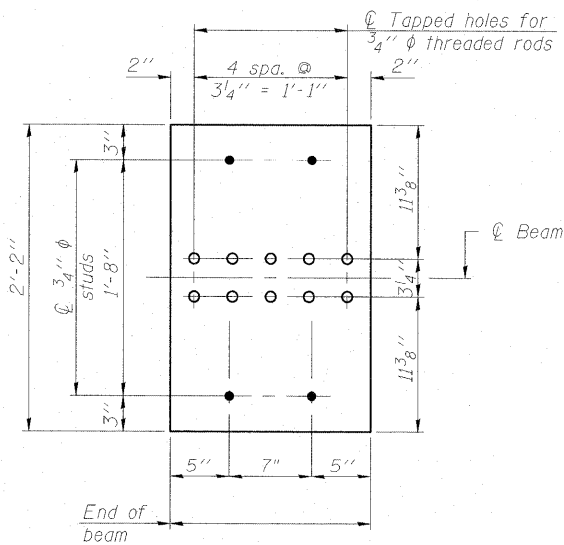
ELEVATION OF BEAM AT PIER



PLAN OF BEAM AT PIER



TOP PLATE

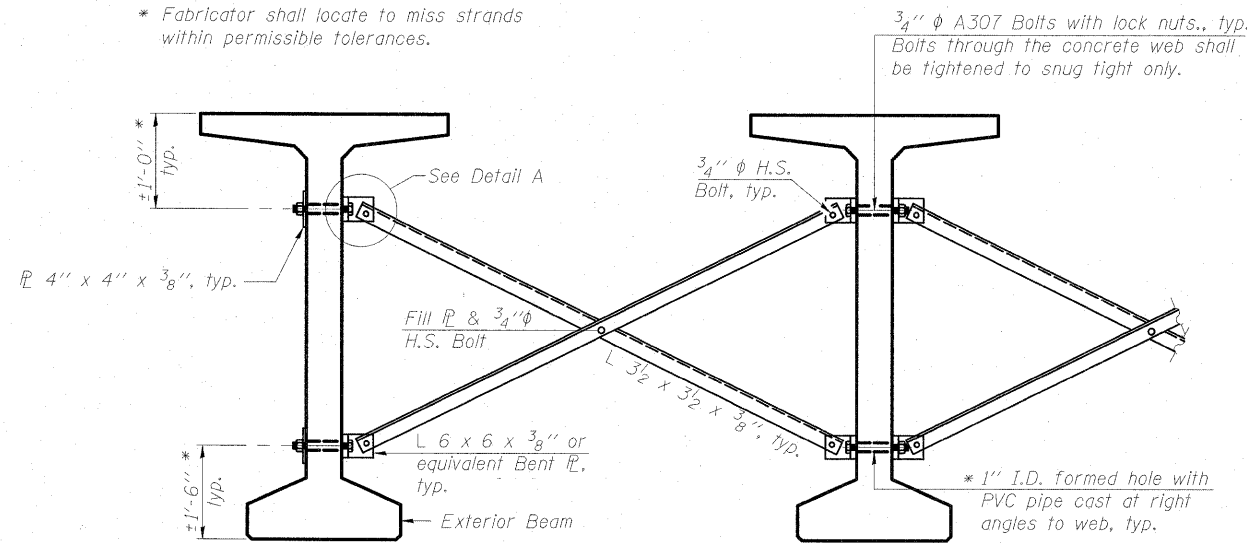


BOTTOM PLATE

See bearing details for pinhole locations when required.

DESIGNED	MJL
CHECKED	PMH
DRAWN	RJ
CHECKED	BKB

* Fabricator shall locate to miss strands within permissible tolerances.



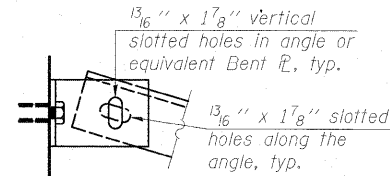
Notes:

All material for bracing shall be hot dip galvanized according to AASHTO M111 unless otherwise noted. Two hardened washers are required for each set of oversized holes. All holes shall be 15/16" unless otherwise noted. 5/16" x 3" x 3" plate washers are required over all slotted holes. All bolts shall be galvanized according to AASHTO M232. Bracing shall be installed as beams are erected and tightened as soon as possible during erection.

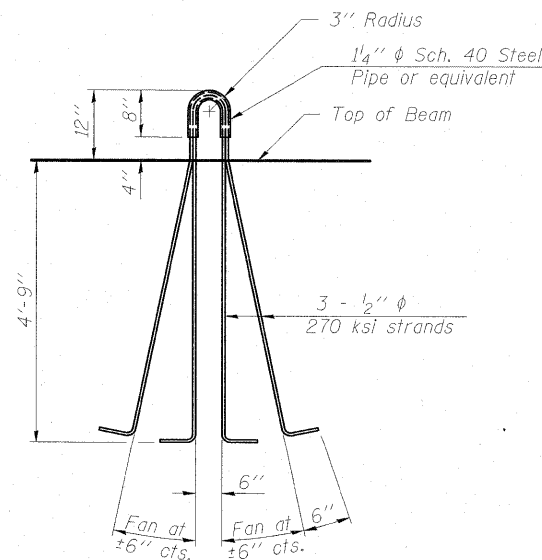
Note:

Permanent bracing shall not be paid for separately but shall be included in the Cost of Furnishing and Erecting the Precast Prestressed Concrete Built-T Beams, 63".

PERMANENT BRACING DETAILS
SECTION THRU BEAM BRACING



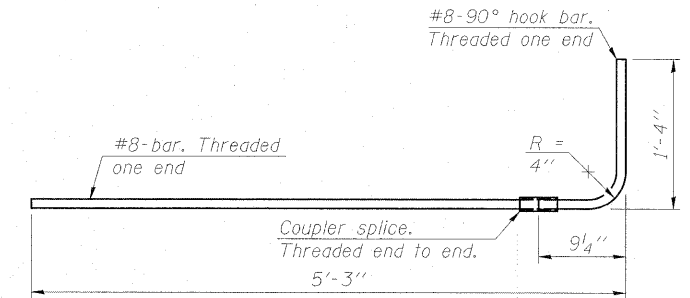
DETAIL A



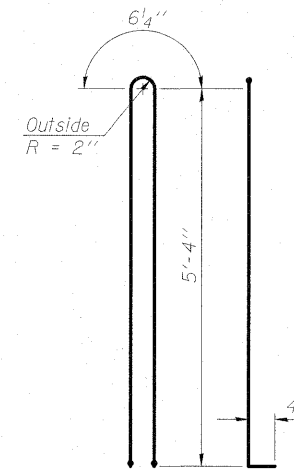
LIFTING LOOP DETAIL

NOTES

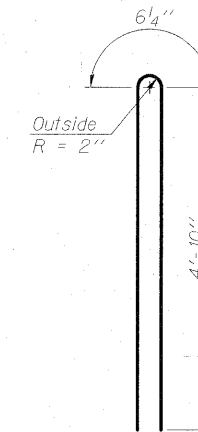
Inserts for 3/4" ϕ threaded dowel rods, when specified, are to be two strut, ferrule type for interior beams and single ferrule, flared loop type for exterior beams. Prestressing steel shall be uncoated high strength, low relaxation 7-wire strand, Grade 270. The nominal diameter shall be 1/2" and the nominal cross-sectional area shall be 0.153 sq. in. Reinforcement bars shall conform to ASTM A 706, Grade 60. (See Special Provisions). A minimum 2 1/2" ϕ lifting pin shall be used to engage the lifting loops during handling. Tilt G₆ bars when necessary to maintain 1/2" clearance. The top and bottom plates shall be AASHTO M270 Grade 50. The bottom plates and studs shall be galvanized according to AASHTO M111. Threaded rods shall be ASTM F 1554 Grade 55. The G₆ bar assembly shall be capable of developing 125 percent of the yield strength of the grade 60 reinforcement bar components. The assembly shall allow completion of the splice without turning of the hook bar. The hook bar shall be threaded such that the entire coupler can be threaded onto the hook bar. Beams requiring G₆ bar assemblies shall not be released from the fabricator until they have attained 45 days of age or older.



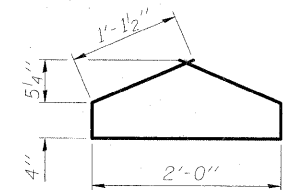
G₆ BAR ASSEMBLY



BAR G1



BAR G2



BAR G4

BILL OF MATERIAL

Item	Unit	Total
Furnishing and Erecting Precast Prestressed Concrete Bulb T-Beams 63"	Ft.	1,501

63" PPC BULB T-BEAM DETAILS
STRUCTURE NO. 099-0347

SHEET NO. SF15	F.A.I. RTE.	SECTION	COUNTY	TOTAL SHEETS	SHEET NO.
	55	92-2HB-2B-1	WILL	756	517
SF24 SHEETS	SN 099-0347		CONTRACT NO. 60F12		
	FED. ROAD DIST. NO.	ILLINOIS	FED. AID PROJECT		



McDonough Associates Inc.
Engineers / Architects
130 East Randolph Street
Chicago, Illinois 60601
(312) 946-8600