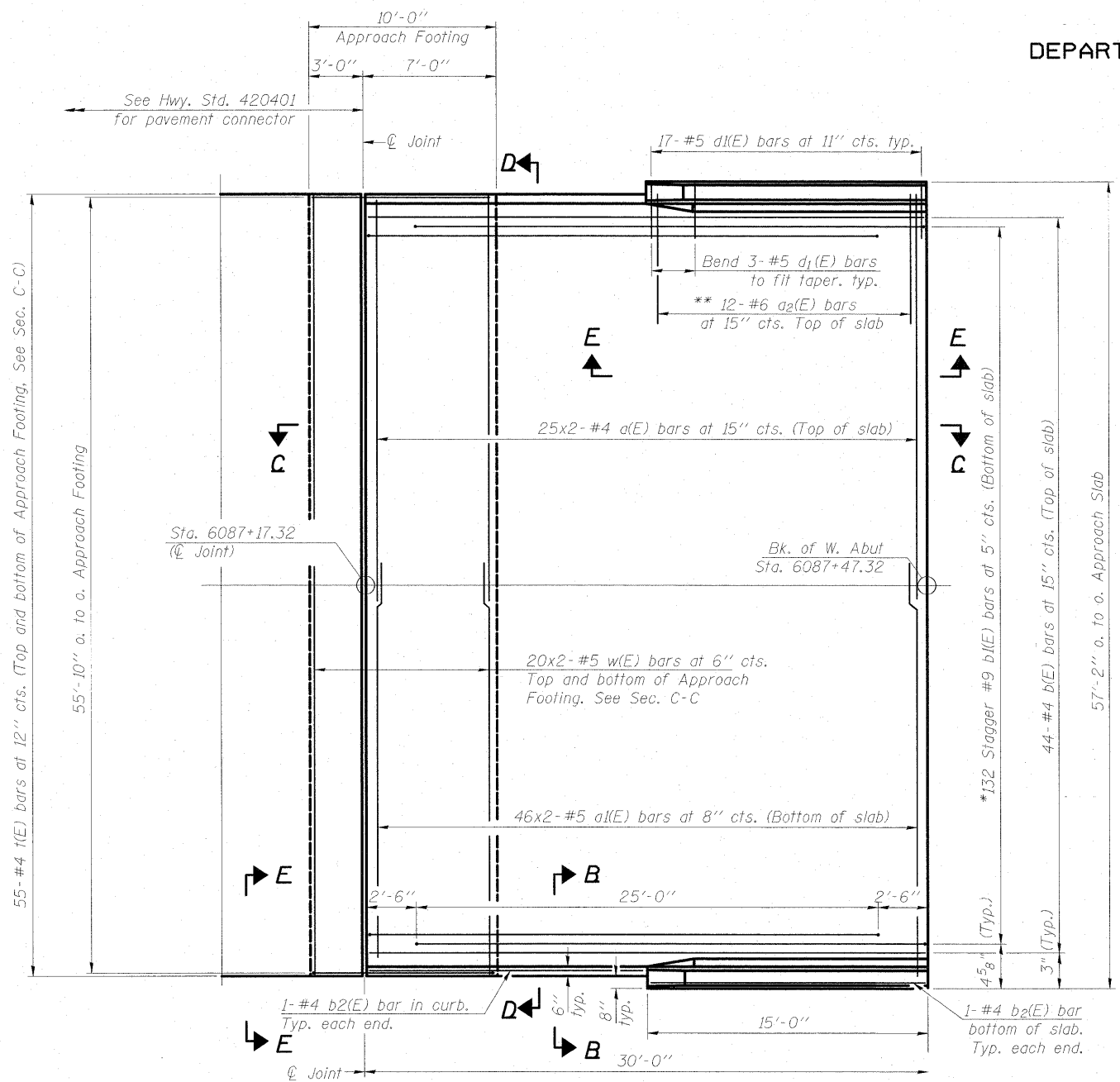
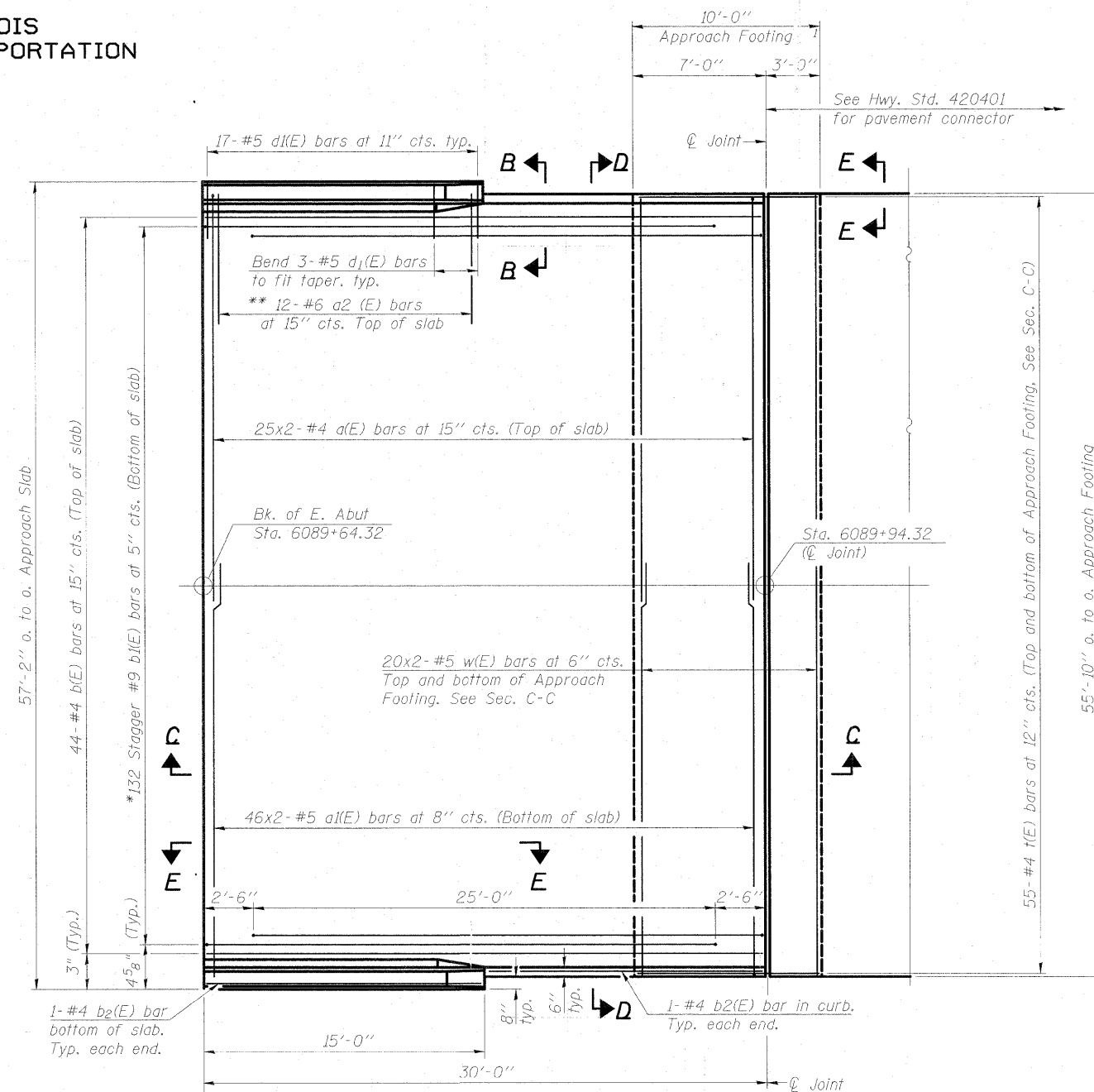


STATE OF ILLINOIS
DEPARTMENT OF TRANSPORTATION



PLAN - WEST APPROCH SLAB

* Tilt #9 b1(E) bars as required to maintain clearance.
** Alternate with a(E) bars, typ. ea. parapet.



PLAN - EAST APPROCH SLAB

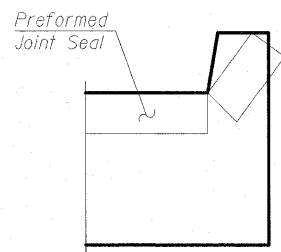
* Tilt #9 b1(E) bars as required to maintain clearance.
** Alternate with a(E) bars, typ. ea. parapet.

MINIMUM BAR LAP

(Slab)
#4 bar = 1'-8"
#5 bar = 2'-2"

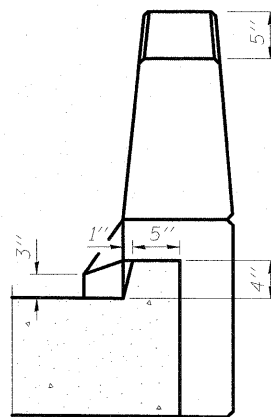
Notes:
See sheet SF20 for Sections C-C & D-D and View E-E.
a(E), a (E), and w(E) bar spacings measured perpendicular to C Rdwy.

DESIGNED	MJL
CHECKED	PMH
DRAWN	RJ
CHECKED	BKB

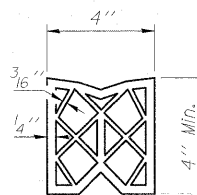


VIEW F-F

Angle Preformed Joint Seal at 45° at curbs when req'd for drainage.



VIEW B-B



PREFORMED JOINT SEAL

McDonough Associates Inc.
Engineers / Architects
130 East Randolph Street
Chicago, Illinois 60601
(312) 946-8600

WEST & EAST APPROACH SLAB PLANS
STRUCTURE NO. 099-0347

SHEET NO. SF19	F.A.I. RTE.	SECTION	COUNTY	TOTAL SHEETS	SHEET NO.
	55	92-2HB-2B-1	WILL	756	521
SF24 SHEETS	SN 099-0347		CONTRACT NO. 60F12		
FED. ROAD DIST. NO.		ILLINOIS	FED. AID PROJECT		