

STATE OF ILLINOIS
DEPARTMENT OF TRANSPORTATION

* Tilt #9 b₁(E) bars as required to maintain clearance.

*** Cost included with Concrete Superstructure.

Notes:

See sheet SF19 for View B-B.

Approach slab and parapet concrete shall be paid for as Concrete Superstructure.

Approach footing concrete shall be paid for as Concrete Structures.

Reinforcement shall be paid for as Reinforcement Bars, Epoxy Coated.

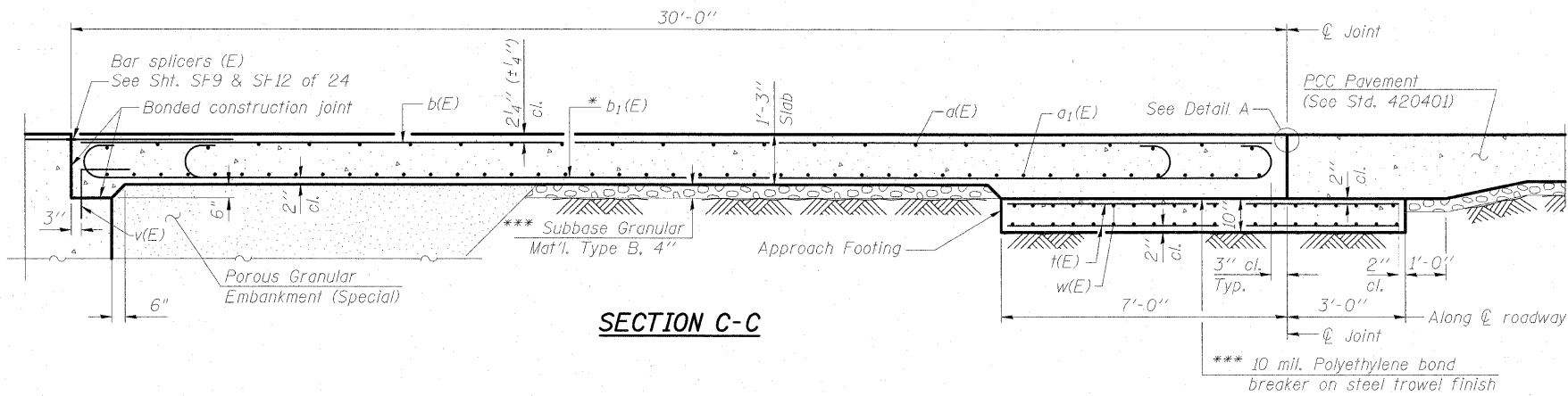
For v(E) bar details, see sheet SF10.

The approach footing maximum applied service bearing pressure (Q_{max}) = 2.0 ksf.

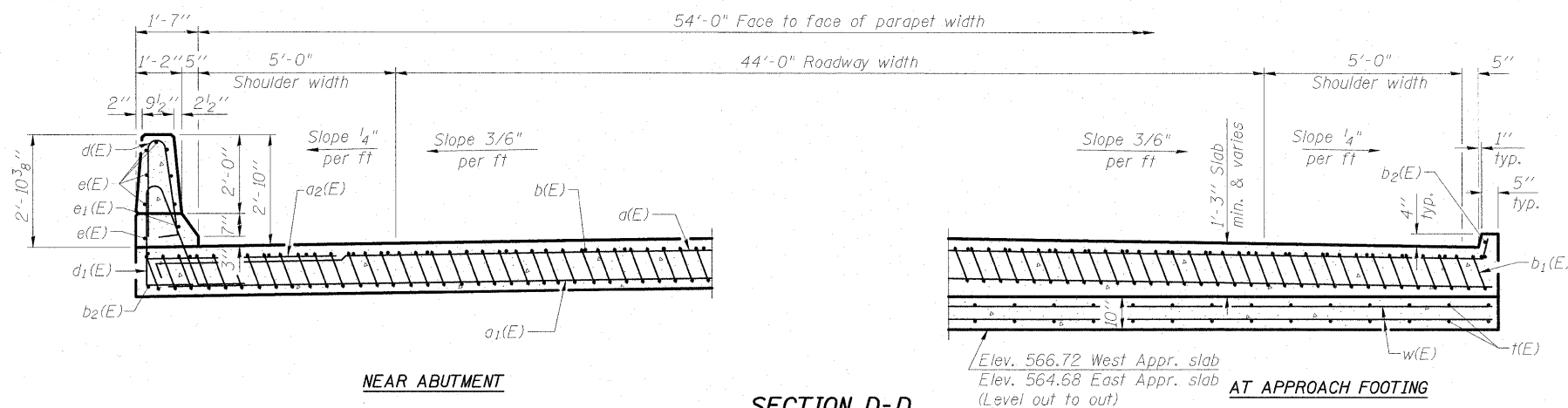
For bar splicer details, see sheet SF22.

Cost of excavation for approach footing included with Concrete Structures.

For Porous Granular Embankment (Special) and drainage treatment details, see sheet SF2.



SECTION C-C

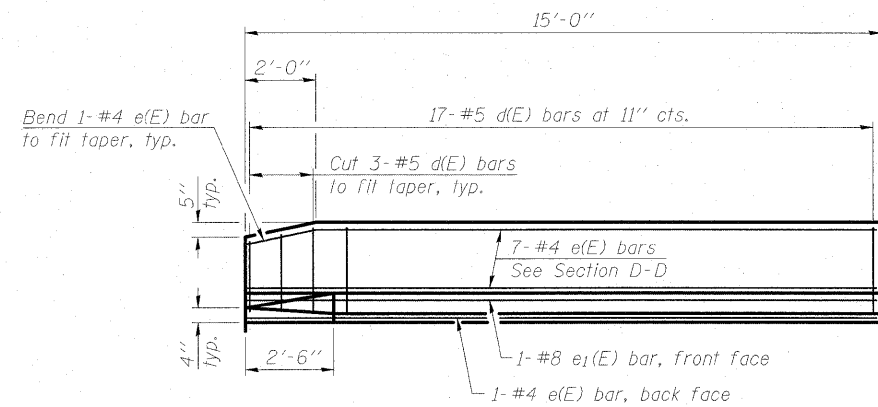


NEAR ABUTMENT

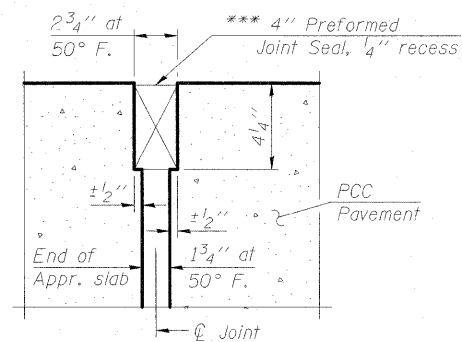
SECTION D-D

(See Plan for dimensions not shown)

AT APPROACH FOOTING



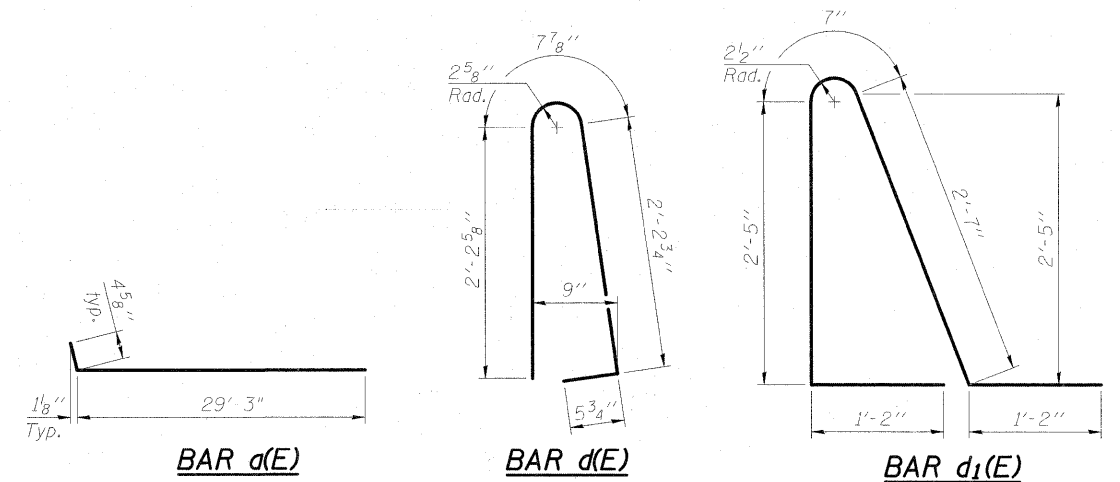
VIEW E-E



RIGID PAVEMENT

DETAIL A

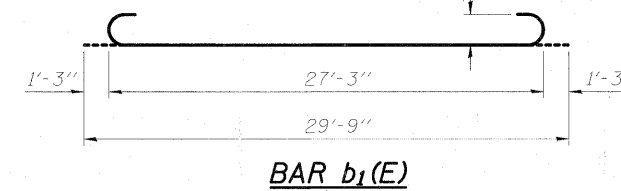
*** Cost included with Concrete Superstructure.



BAR d(E)

BAR d1(E)

BAR d1(E)



BAR b1(E)

TWO APPROACHES
BILL OF MATERIAL

Bar	No.	Size	Length	Shape
d(E)	100	#4	29'-8"	U
a1(E)	184	#5	29'-6"	—
a2(E)	48	#6	6'-0"	—
b(E)	88	#4	29'-8"	—
b1(E)	264	#9	29'-9"	U
b2(E)	8	#4	14'-8"	—
d(E)	68	#5	5'-7"	U
d1(E)	68	#5	7'-11"	U
e(E)	32	#4	14'-8"	—
e1(E)	4	#8	14'-8"	—
t(E)	220	#4	9'-8"	—
w(E)	160	#5	28'-10"	—
Concrete Superstructure		Cu. Yd.	178.9	
Concrete Structures		Cu. Yd.	34.4	
Reinforcement Bars, Epoxy Coated		Pound	44,260	

DESIGNED	MJL
CHECKED	PMH
DRAWN	RJ
CHECKED	BKB

APPROACH SLAB DETAILS
STRUCTURE NO. 099-0347

McDonough Associates Inc.
Engineers / Architects
130 East Randolph Street
Chicago, Illinois 60601
(312) 946-8600

SHEET NO. SF20	F.A.I. RTE.	SECTION	COUNTY	TOTAL SHEETS	SHEET NO.
	55	92-2HB-2B-1	WILL	756	522
SF24 SHEETS	SN 099-0347		CONTRACT NO. 60F12		
FED. ROAD DIST. NO.		ILLINOIS	FED. AID PROJECT		