

Head Mark (H.M.P.) Box cut at top of SE Wingwall of Grant Creek bridge on East Frontage road of I-55 El. 520.80.

STATE OF ILLINOIS
DEPARTMENT OF TRANSPORTATION

DESIGN SPECIFICATIONS

AASHTO LRFD Bridge Design Specifications, 2007 (4th Edition) with 2008 Interim Revisions.
AASHTO Guide Specifications for Horizontally Curved Steel Girder Highway Bridges.

LOADING HL-93

Allow 50 lbs/sq. ft. for Future Wearing Surface

DESIGN STRESSES

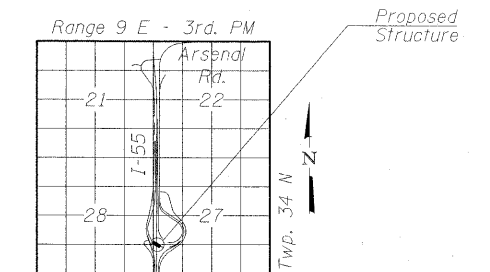
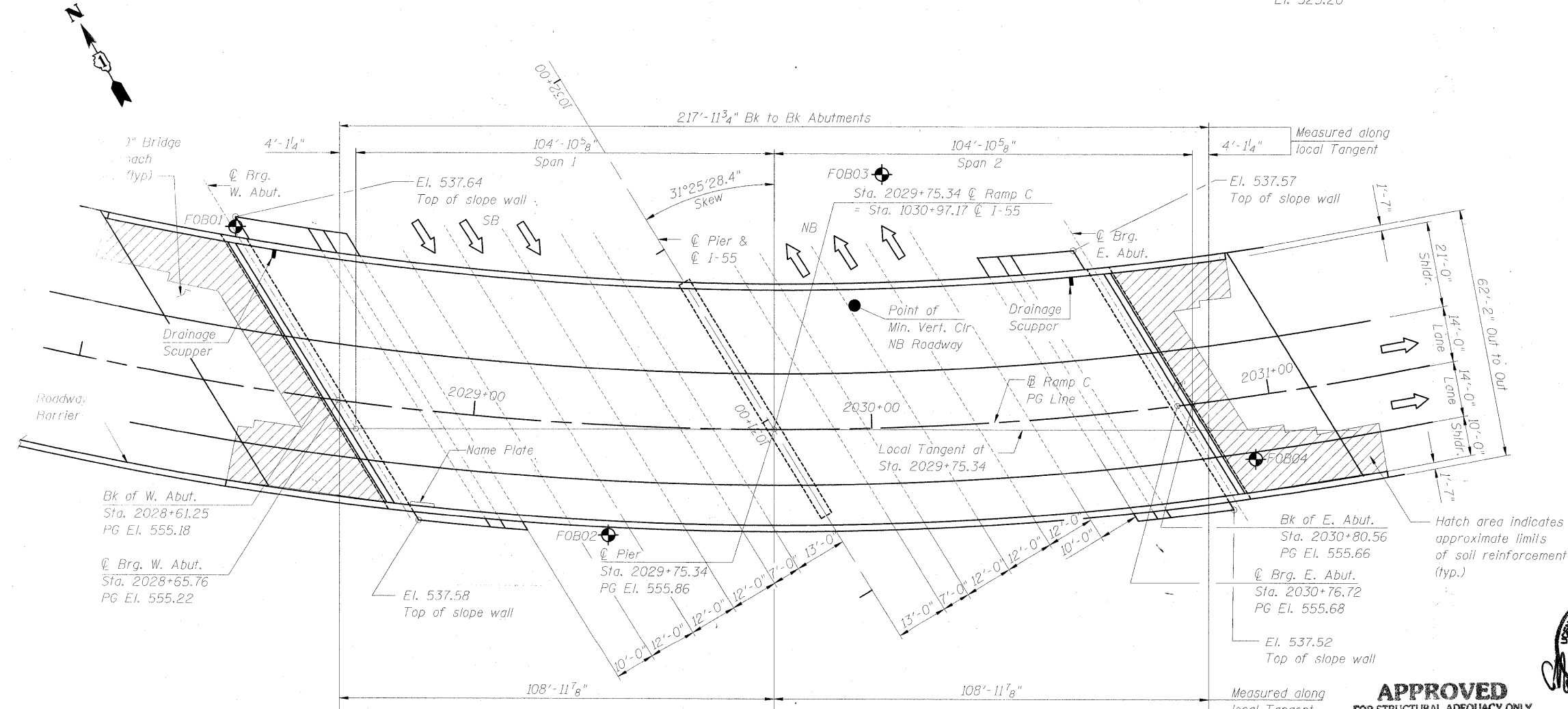
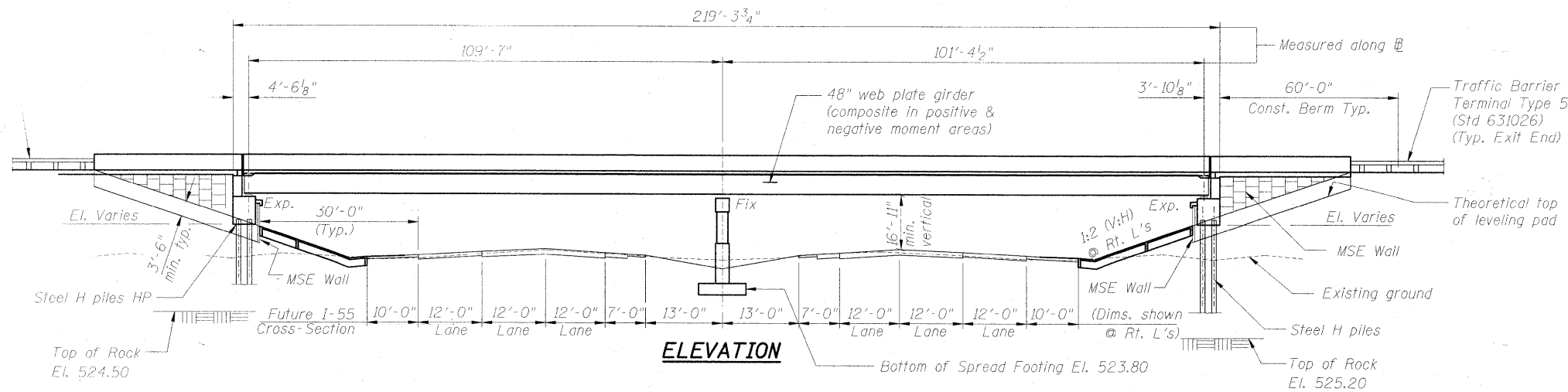
$f'_c = 3,500$ psi
 $f_y = 60,000$ psi (reinforcement)
 $f_y = 50,000$ psi (M270 Gr50)

SEISMIC DATA

Seismic Performance Zone (SPZ) = 1
Design Spectral Acceleration at 1.0 sec. ($S_{0.1}$) = 0.07g
Design Spectral Acceleration at 0.2 sec. ($S_{0.2}$) = 0.127g
Soil Site class = C

CURVE DATA

Ramp C
PI STA. = 2037+82.40
 $\Delta = 132^\circ 56' 23.34"$ (LT)
 $D = 6^\circ 51' 42"$
 $R = 835.00'$
 $T = 1917.6137'$
 $L = 1937.3983'$
 $E = 1256.5227'$
S.E. RUN = 0.06 Ft./Ft.
P.C. STA. = 2018+64.79
P.T. STA. = 2038+02.19

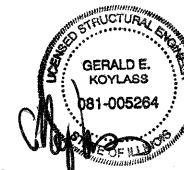


LOCATION SKETCH

PLAN

APPROVED
FOR STRUCTURAL ADEQUACY ONLY

Gerald E. Koylars
ENGINEER OF BRIDGES AND STRUCTURES



Exp: 11/30/2012

DESIGNED	BKB
CHECKED	AMV
DRAWN	RJ
CHECKED	BKB

McDonough Associates Inc.
Engineers / Architects
130 East Randolph Street
Chicago, Illinois 60601
(312) 946-8600

SHEET NO.	F.A.I. RTE.	SECTION	COUNTY	TOTAL SHEETS	SHEET NO.
SC-1	55	(99-1&2) R-6	WILL	756	527
SHEETS			CONTRACT NO. 60F12		
SC-37		FED. ROAD DIST. NO.	ILLINOIS FED. AID PROJECT		

GENERAL PLAN AND ELEVATION
RAMP C OVER I-55
SEC. (99-1&2) R-6
WILL COUNTY
STATION 2029+75.34
STRUCTURE NO. 099-0348