

STATE OF ILLINOIS
DEPARTMENT OF TRANSPORTATION

NORTH EDGE OF SHOULDER

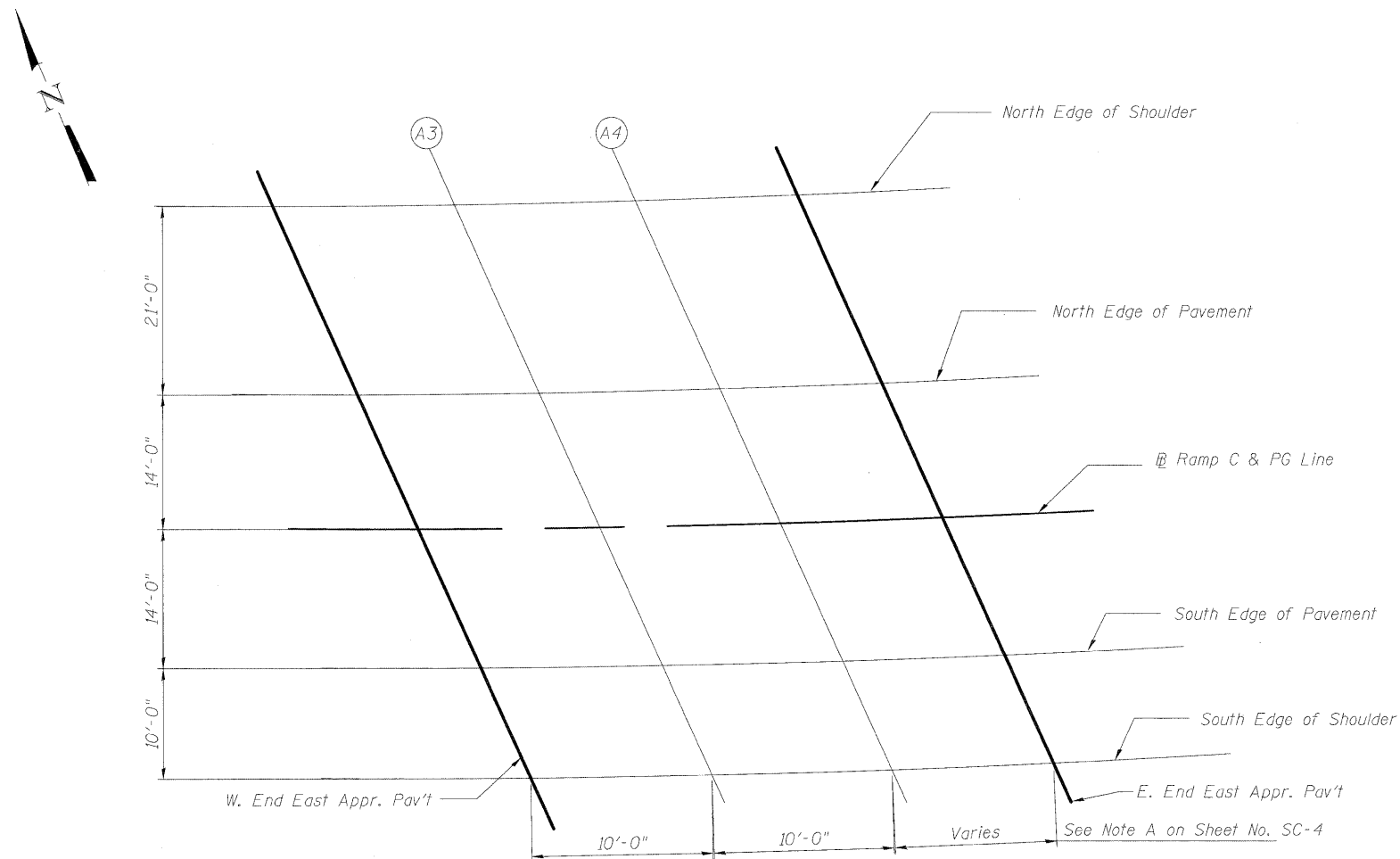
Location	Station	Offset	Theoretical Grade Elevations
W. End East Appr. Pav't	203063.28	-35.00	553.64
A3	203073.71	-35.00	553.59
A4	203084.14	-35.00	553.54
E. End East Appr. Pav't	203094.87	-35.00	553.47

NORTH EDGE OF PAVEMENT

Location	Station	Offset	Theoretical Grade Elevations
W. End East Appr. Pav't	203073.51	-14.00	554.85
A3	203083.67	-14.00	554.80
A4	203093.84	-14.00	554.73
E. End East Appr. Pav't	203104.13	-14.00	554.66

RAMP C & PROFILE GRADE LINE

Location	Station	Offset	Theoretical Grade Elevations
W. End East Appr. Pav't	203080.01	0	555.66
A3	203090.01	0	555.60
A4	203100.01	0	555.53
E. End East Appr. Pav't	203110.01	0	555.46



PLAN
(East Approach Slab)

SOUTH EDGE OF PAVEMENT

Location	Station	Offset	Theoretical Grade Elevations
W. End East Appr. Pav't	203086.28	14.00	556.46
A3	203096.11	14.00	556.40
A4	203105.94	14.00	556.33
E. End East Appr. Pav't	203115.69	14.00	556.25

SOUTH EDGE OF SHOULDER

Location	Station	Offset	Theoretical Grade Elevations
W. End East Appr. Pav't	203090.62	24.00	557.04
A3	203100.33	24.00	556.97
A4	203110.05	24.00	556.90
E. End East Appr. Pav't	203119.62	24.00	556.82

**TOP OF EAST APPROACH
SLAB ELEVATIONS
STRUCTURE NO. 099-0348**

DESIGNED	MJL
CHECKED	PMH
DRAWN	MJL
CHECKED	PMH



McDonough Associates Inc.
Engineers / Architects
130 East Randolph Street
Chicago, Illinois 60601
(312) 946-8600

SHEET NO. SC-9 SHEETS SC-37	F.A.I. RTE.	SECTION	COUNTY	TOTAL SHEETS	SHEET NO.
	55	(99-1&2) R-6	WILL	756	535
FED. ROAD DIST. NO.			ILLINOIS FED. AID PROJECT		
CONTRACT NO. 60F12					