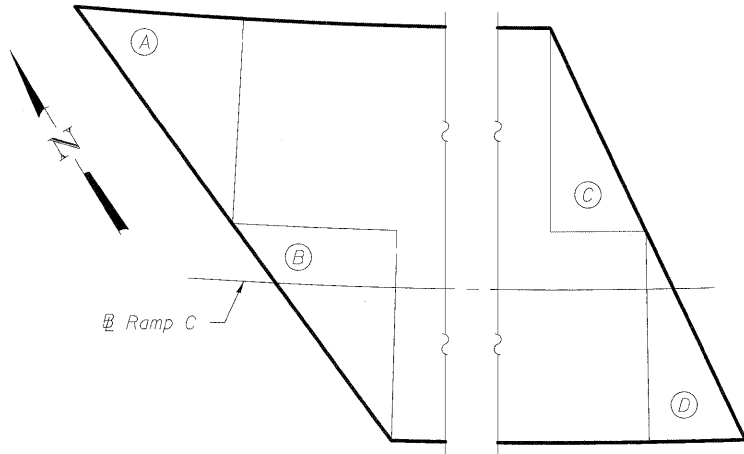
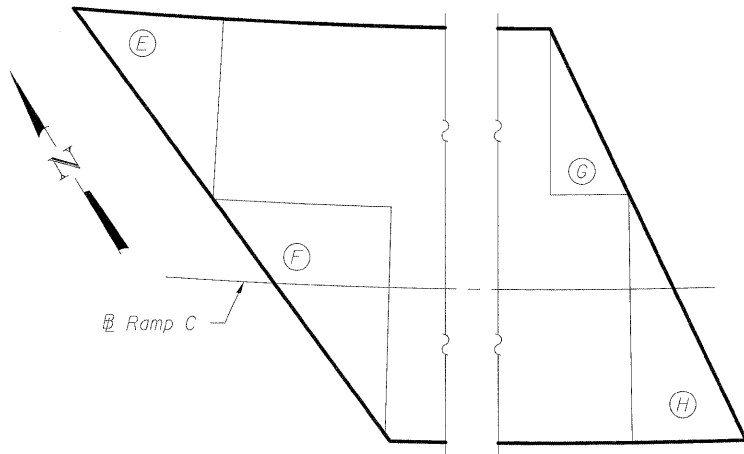


STATE OF ILLINOIS
DEPARTMENT OF TRANSPORTATION

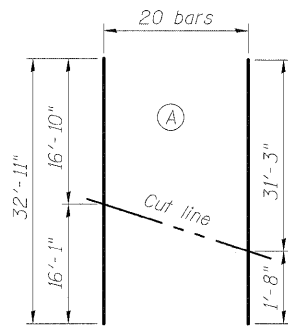


BOTTOM BAR PLAN

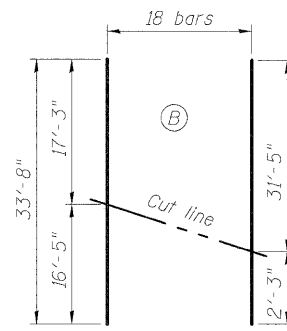


TOP BAR PLAN

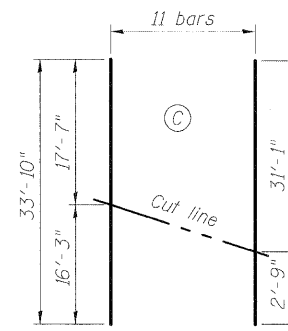
BRIDGE CUT BAR LOCATION PLAN



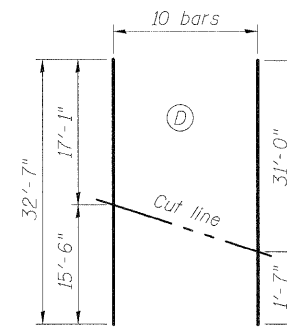
BAR a4(E)



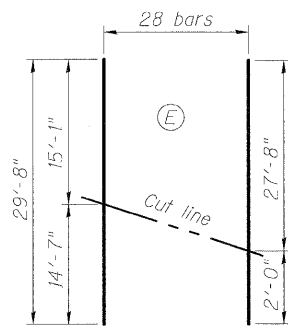
BAR a5(E)



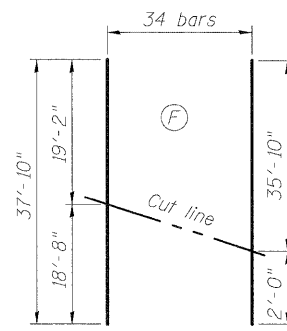
BAR a6(E)



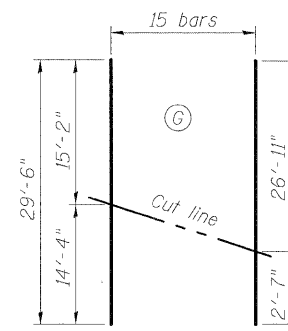
BAR a7(E)



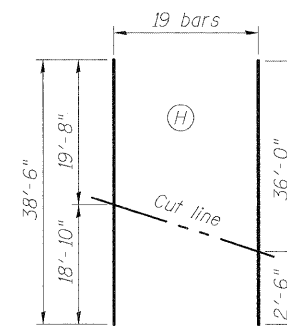
BAR a8(E)



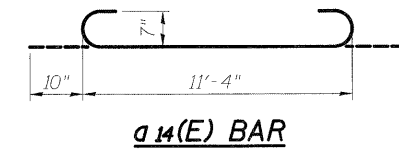
BAR a9(E)



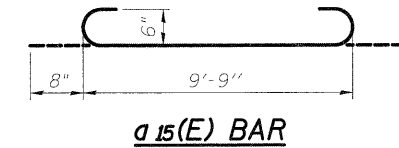
BAR a10(E)



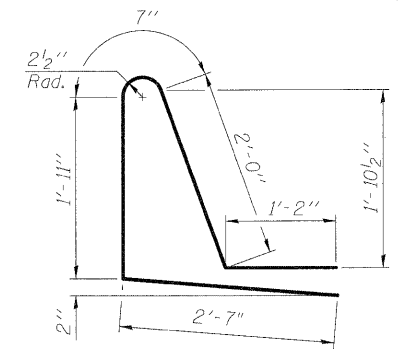
BAR a11(E)



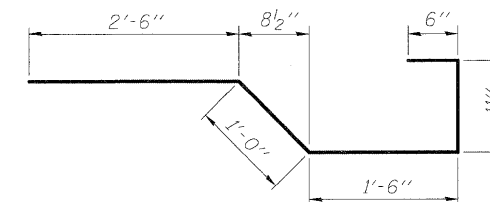
BAR a14(E)



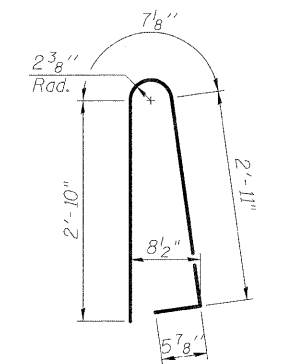
BAR a15(E)



BAR d1(E)



BAR x(E)



BAR d(E)

**SUPERSTRUCTURE
BILL OF MATERIAL**

Bar	No.	Size	Length	Shape
a(E)	471	#5	36'-6"	—
a1(E)	608	#5	32'-0"	—
a2(E)	1028	#6	10'-0"	—
a3(E)	507	#5	27'-4"	—
a4(E)	20	#5	32'-11"	—
a5(E)	18	#5	33'-8"	—
a6(E)	11	#5	33'-10"	—
a7(E)	10	#5	32'-7"	—
a8(E)	28	#5	29'-8"	—
a9(E)	34	#5	37'-10"	—
a10(E)	15	#5	29'-6"	—
a11(E)	19	#5	38'-6"	—
a12(E)	6	#5	28'-0"	—
a13(E)	4	#5	35'-0"	—
a14(E)	18	#7	13'-0"	—
a15(E)	18	#6	11'-1"	—
a16(E)	5	#6	38'-0"	—
a17(E)	5	#6	44'-8"	—
a18(E)	5	#6	30'-4"	—
a19(E)	5	#6	40'-0"	—
a20(E)	16	#5	1'-6"	—
b(E)	455	#5	33'-0"	—
b1(E)	62	#6	15'-3"	—
b2(E)	62	#6	35'-0"	—
b3(E)	62	#6	19'-3"	—
b4(E)	528	#5	29'-2"	—
d(E)	473	#5	6'-10"	—
d1(E)	473	#5	8'-3"	—
e(E)	7	#4	18'-1"	—
e1(E)	16	#4	19'-2"	—
e2(E)	56	#4	16'-8"	—
e3(E)	7	#4	14'-3"	—
e4(E)	72	#4	18'-8"	—
e5(E)	7	#4	16'-4"	—
e6(E)	3	#4	32'-9"	—
e7(E)	3	#4	29'-6"	—
e8(E)	3	#4	31'-6"	—
e9(E)	3	#4	29'-0"	—
e10(E)	3	#8	34'-1"	—
e11(E)	2	#8	19'-2"	—
e12(E)	3	#8	30'-11"	—
e13(E)	3	#8	33'-2"	—
e14(E)	2	#8	18'-8"	—
e15(E)	3	#8	30'-8"	—
e16(E)	7	#4	14'-9"	—
x(E)	108	#5	6'-5"	—
Reinforcement Bars, Epoxy Coated		Pound	125,710	
Concrete Superstructure		Cu. Yd.	418.3	

Bars indicated thus 1 x 2 - #8 etc. indicates 1 line of bars with 2 lengths per line.

DESIGNED	MGB
CHECKED	PMH
DRAWN	AVM
CHECKED	PMH

McDonough Associates Inc.
Engineers / Architects
130 East Randolph Street
Chicago, Illinois 60601
(312) 946-8600

SHEET NO. SC-13 SHEETS SC-37	F.A.I. RTE.	SECTION	COUNTY	TOTAL SHEETS	SHEET NO.
	55	(99-1&2) R-6	WILL	756	539
FED. ROAD DIST. NO.			ILLINOIS FED. AID PROJECT	CONTRACT NO. 60F12	

**SUPERSTRUCTURE BILL OF MATERIAL
STRUCTURE NO. 099-0348**