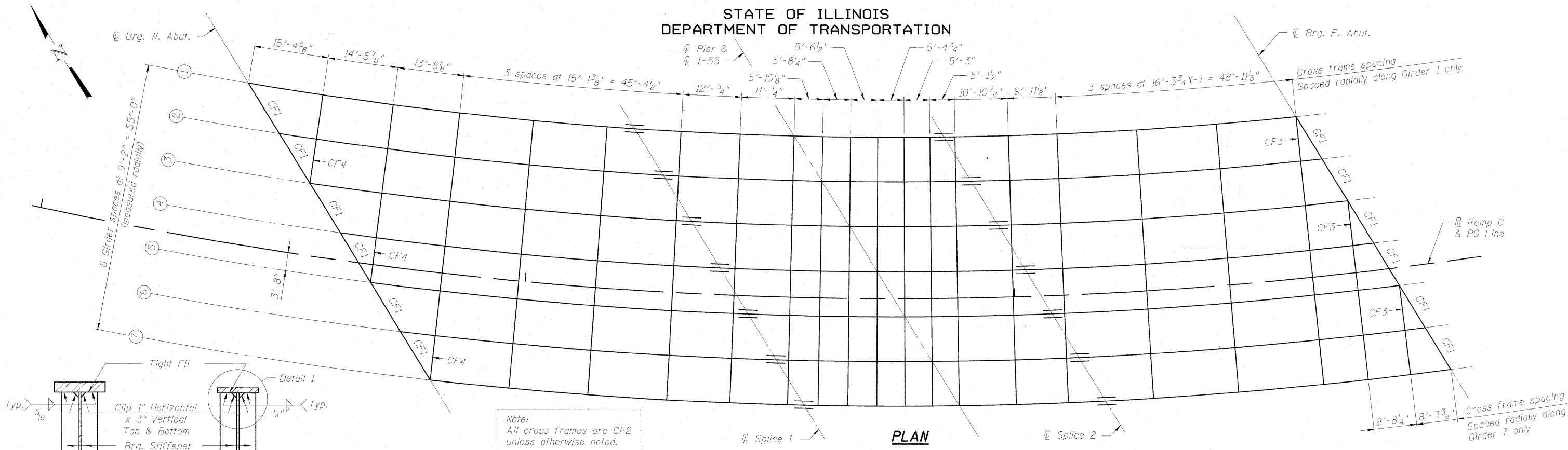
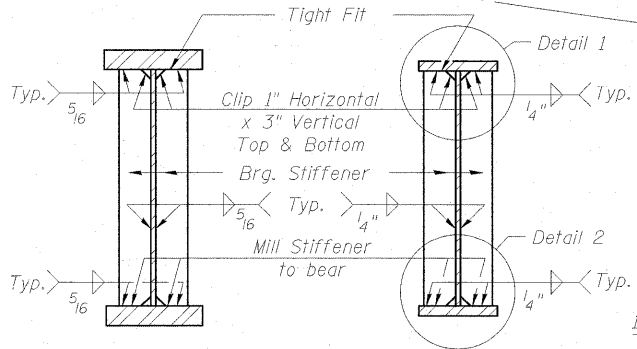


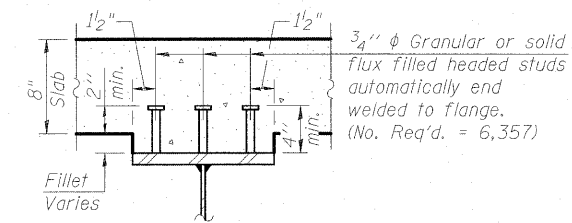
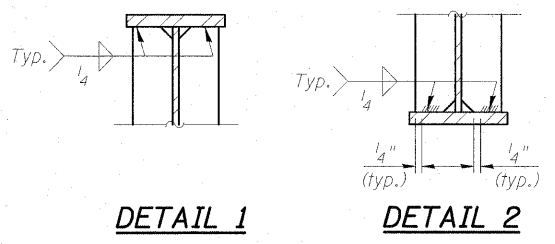
STATE OF ILLINOIS  
DEPARTMENT OF TRANSPORTATION



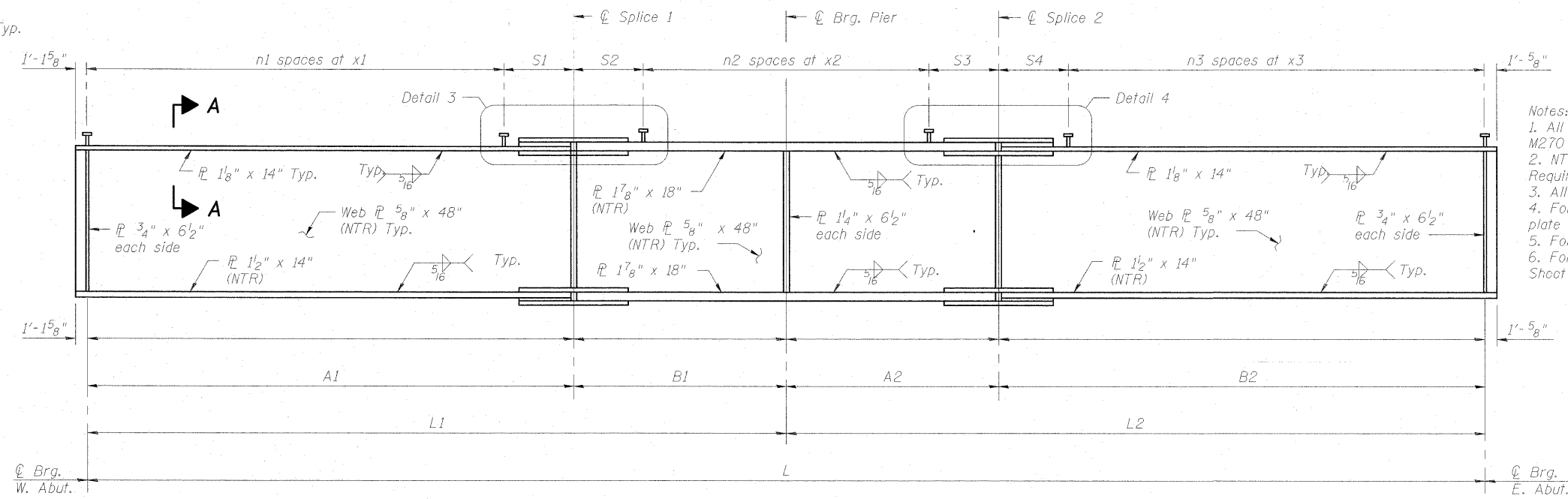
Note:  
All cross frames are CF2  
unless otherwise noted.



**SECTION AT PIER**  
**SECTION AT ABUTMENT**



**SECTION A-A**



- Notes:
1. All structural steel shall be AASHTO M270 Grade 50.
  2. NTR indicates Notch Toughness Requirements.
  3. All splice plates shall comply with N.T.R.
  4. For shear connectors on top of splice plate see Detail on Sheet SC-18.
  5. For Details 3 and 4 see Sheet S-18.
  6. For shear stud numbers and spacing see Sheet S-18.

**GIRDER ELEVATION** N.T.S.  
"NTR" denotes plates to which notch toughness requirements are applicable.

**GIRDER DIMENSIONS**

GIRDER	RADIUS	L	L1	L2	A1	B1	A2	B2
1	802.000'	214'-7"	111'-11 <sup>3</sup> / <sub>4</sub> "	102'-7 <sup>1</sup> / <sub>4</sub> "	79'-4 <sup>3</sup> / <sub>4</sub> "	32'-7"	30'-7"	72'-0 <sup>1</sup> / <sub>4</sub> "
2	811.167'	213'-6 <sup>5</sup> / <sub>8</sub> "	111'-3 <sup>5</sup> / <sub>8</sub> "	102'-3"	78'-10 <sup>5</sup> / <sub>8</sub> "	32'-5"	30'-5 <sup>1</sup> / <sub>2</sub> "	71'-9 <sup>1</sup> / <sub>2</sub> "
3	820.333'	212'-5 <sup>7</sup> / <sub>8</sub> "	110'-7 <sup>7</sup> / <sub>8</sub> "	101'-10 <sup>3</sup> / <sub>4</sub> "	78'-4"	32'-3 <sup>5</sup> / <sub>8</sub> "	30'-4"	71'-6 <sup>3</sup> / <sub>4</sub> "
4	829.500'	211'-6 <sup>1</sup> / <sub>4</sub> "	109'-11 <sup>1</sup> / <sub>2</sub> "	101'-6 <sup>3</sup> / <sub>4</sub> "	77'-10 <sup>5</sup> / <sub>8</sub> "	32'-1 <sup>3</sup> / <sub>8</sub> "	30'-2 <sup>1</sup> / <sub>2</sub> "	71'-4 <sup>1</sup> / <sub>4</sub> "
5	838.667'	210'-7 <sup>1</sup> / <sub>8</sub> "	109'-4 <sup>1</sup> / <sub>8</sub> "	101'-3"	77'-4 <sup>1</sup> / <sub>2</sub> "	31'-11 <sup>5</sup> / <sub>8</sub> "	30'-1 <sup>5</sup> / <sub>8</sub> "	71'-1 <sup>7</sup> / <sub>8</sub> "
6	847.833'	209'-8 <sup>5</sup> / <sub>8</sub> "	108'-9 <sup>1</sup> / <sub>4</sub> "	100'-11 <sup>3</sup> / <sub>8</sub> "	76'-11 <sup>1</sup> / <sub>4</sub> "	31'-10"	29'-11 <sup>1</sup> / <sub>8</sub> "	70'-11 <sup>1</sup> / <sub>2</sub> "
7	857.000'	208'-10 <sup>1</sup> / <sub>2</sub> "	108'-2 <sup>5</sup> / <sub>8</sub> "	100'-7 <sup>7</sup> / <sub>8</sub> "	76'-6 <sup>1</sup> / <sub>4</sub> "	31'-8 <sup>3</sup> / <sub>8</sub> "	29'-10 <sup>5</sup> / <sub>8</sub> "	70'-9 <sup>1</sup> / <sub>4</sub> "

DESIGNED	MB
CHECKED	KJH
DRAWN	AMV
CHECKED	KJH

**FRAMING PLAN**  
**STRUCTURE NO. 099-0348**

**McDonough Associates Inc.**  
Engineers / Architects  
130 East Randolph Street  
Chicago, Illinois 60601  
(312) 946-8600

SHEET NO. SC-16 SHEETS SC-37	F.A.I. RTE.	SECTION	COUNTY	TOTAL SHEETS	SHEET NO.
	55	(99-1&2) R-6	WILL	756	542
FED. ROAD DIST. NO.			ILLINOIS FED. AID PROJECT		
<b>CONTRACT NO. 60F12</b>					