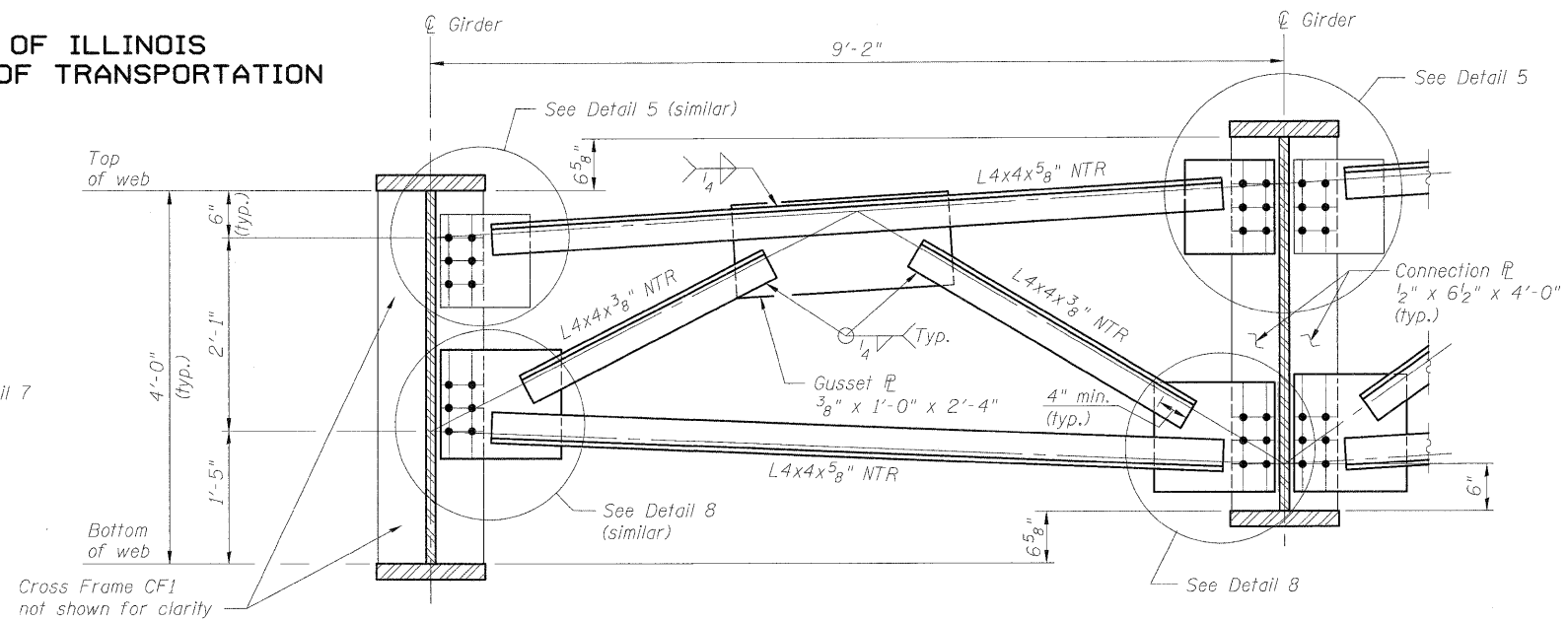
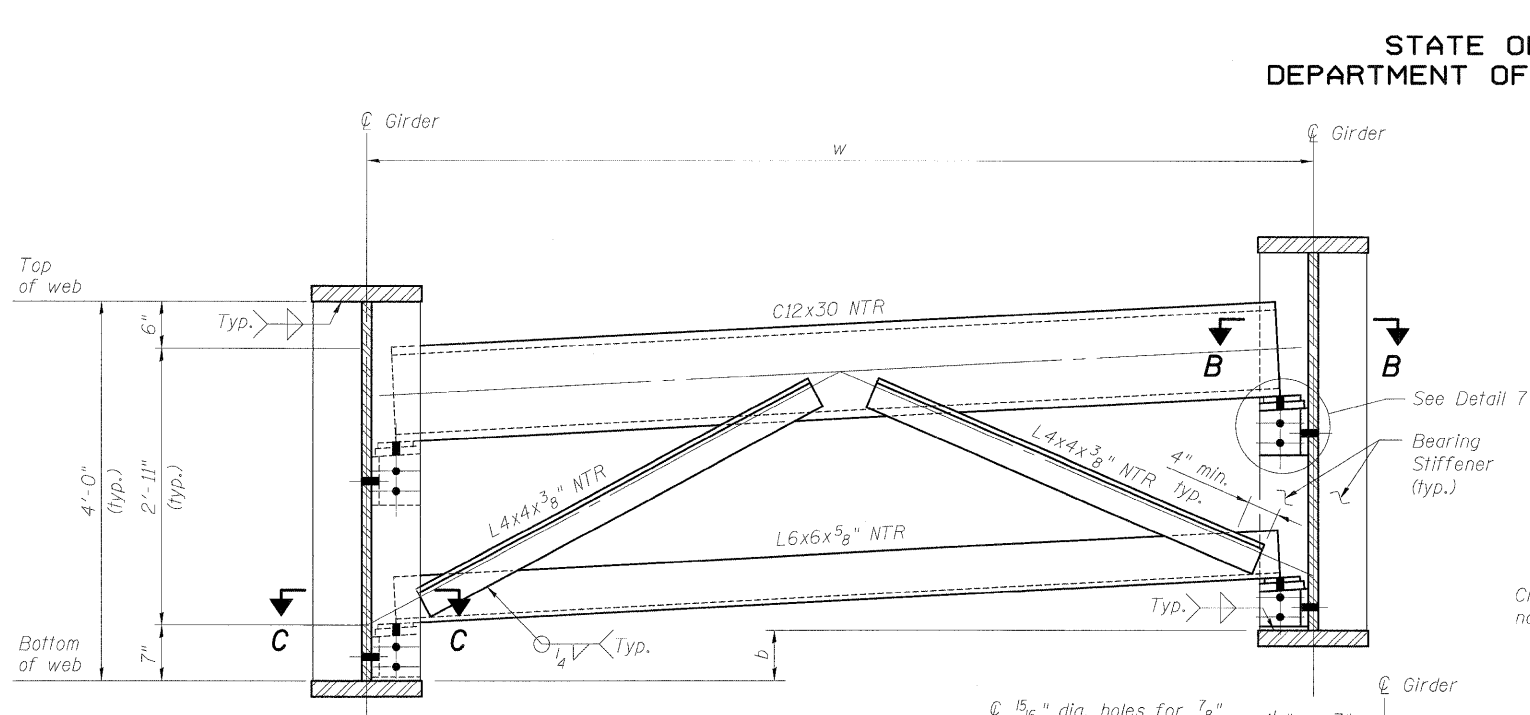


STATE OF ILLINOIS  
DEPARTMENT OF TRANSPORTATION

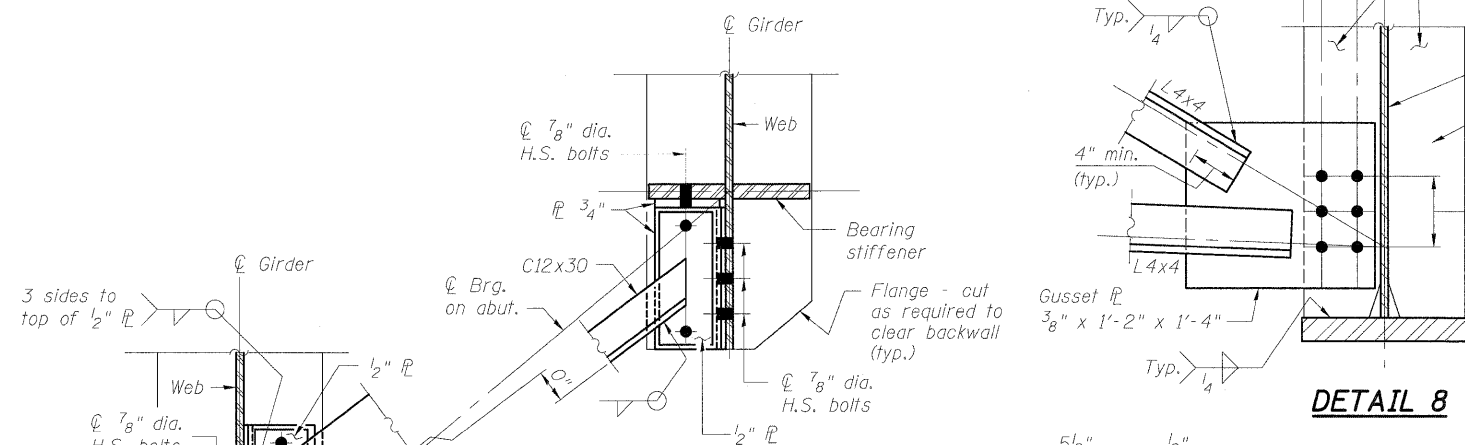


CROSS FRAME CF3 (LOOKING UPSTATION)

CROSS FRAME CF1

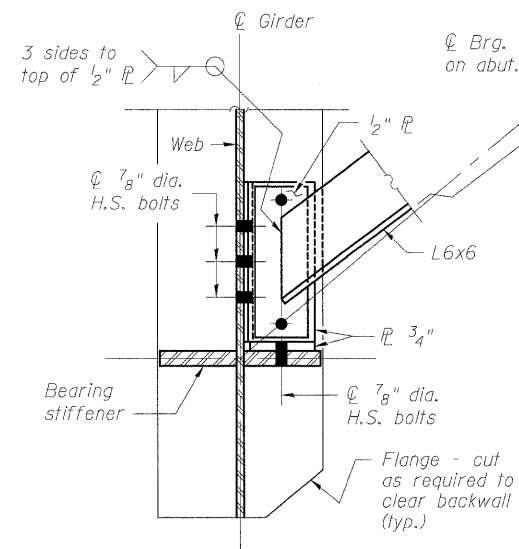
Adjacent Cross Frames not shown for clarity

1 5/16" dia. holes for 7/8" dia. bolts w/ (2) - 5/16" hardened washers (typ.)  
1 1/2" 3"



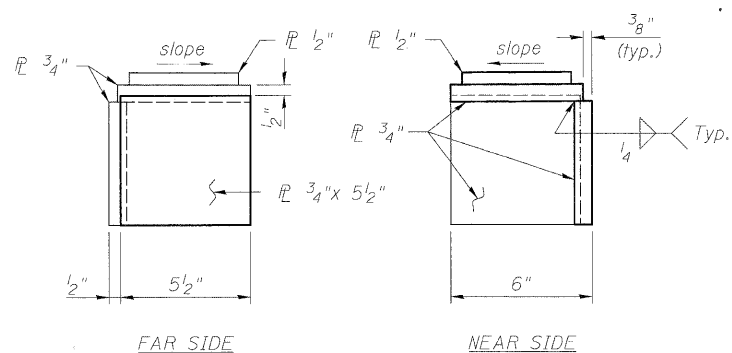
DETAIL 8

SECTION B-B  
TOP CONNECTION  
DETAIL



SECTION C-C  
BOTTOM CONNECTION  
DETAIL

DESIGNED	MB
CHECKED	KJH
DRAWN	AMV
CHECKED	KJH



DETAIL 7

CROSS FRAME CF1 DIMENSIONS

	Along C of Bearing at West Abutment					
SPAN	1 to 2	2 to 3	3 to 4	4 to 5	5 to 6	6 to 7
w	12'-0 7/8"	11'-11 3/4"	11'-10 5/8"	11'-9 1/2"	11'-8 1/2"	11'-7 5/8"
b	7 3/4"	7 5/8"	7 9/16"	7 1/2"	7 3/8"	7 5/16"
	Along C of Bearing at East Abutment					
SPAN	1 to 2	2 to 3	3 to 4	4 to 5	5 to 6	6 to 7
w	10'-1 3/4"	10'-1 1/2"	10'-1 1/8"	10'-0 7/8"	10'-0 5/8"	10'-0 3/8"
b	6 3/8"	6 3/8"	6 5/16"	6 5/16"	6 5/16"	6 5/16"

- Notes:  
1. NTR indicates Notch Toughness Requirement.  
2. All Structural Steel, except fill plates, shall be AASHTO M270 Grade 50.  
3. For Detail 5 see Sheet SC-18.

STEEL DETAILS  
STRUCTURE NO. 099-0348

**McDonough Associates Inc.**  
Engineers / Architects  
130 East Randolph Street  
Chicago, Illinois 60601  
(312) 946-8600

SHEET NO. SC-19 SHEETS SC-37	F.A.I. RTE.	SECTION	COUNTY	TOTAL SHEETS	SHEET NO.
	55	(99-1&2) R-6	WILL	756	545
FED. ROAD DIST. NO.			ILLINOIS FED. AID PROJECT		
CONTRACT NO. 60F12					