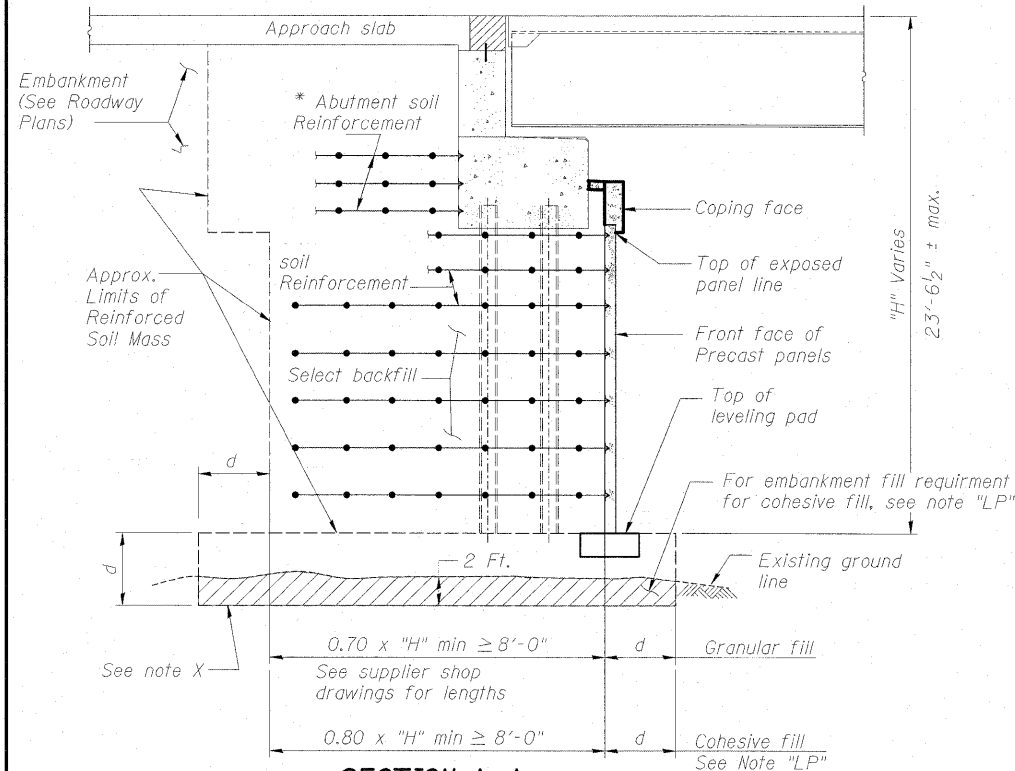


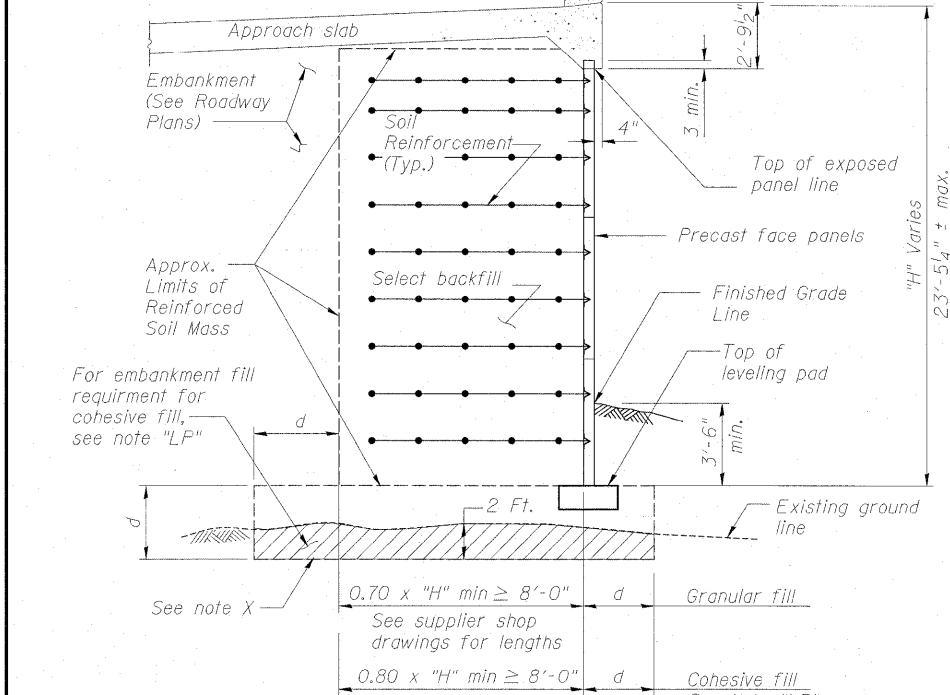
STATE OF ILLINOIS
DEPARTMENT OF TRANSPORTATION



SECTION A-A

* The MSE wall supplier shall design the abutment soil reinforcement to resist a horizontal force of 4 kips/ft of abutment.

Dimension d=4.79 Ft
See Note X



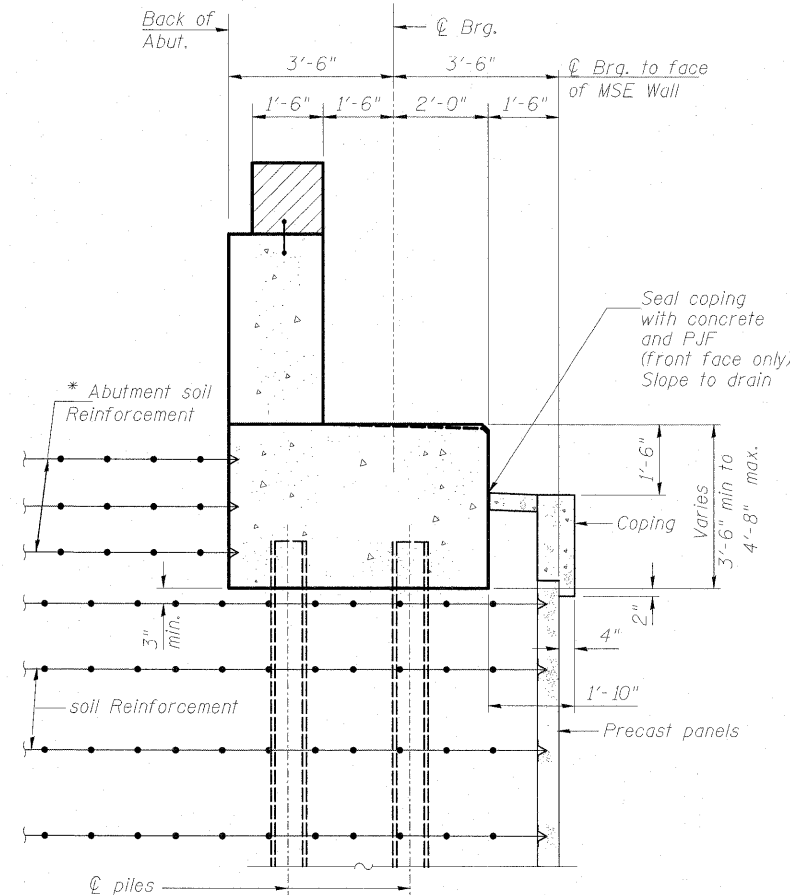
SECTION B-B

Note "LP":

If the leveling pad is placed on top of cohesive fill material, the embankment fill below the leveling pad shall achieve an unconfined compressive strength of 1.5 tons per square foot, which may require that the degree of compaction is higher than 95% of the maximum dry density according to AASHTO T99. The embankment material should be placed in layers no more than 8 inches in loose thickness. The dynamic cone penetrometer reading must be equal to or less than 1.3 inches per blow, when testing the penetration rate in accordance with the IDOT Geotechnical Manual.

Note X: Dimension d is based on $Q_u=1.5$ tons/sq. Ft. and moisture content less than 30%.

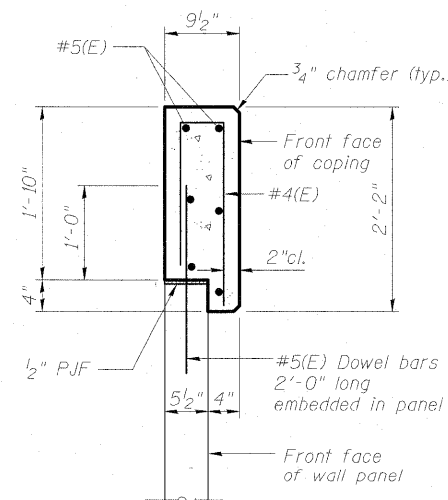
DESIGNED	MJL
CHECKED	MGB
DRAWN	RJ
CHECKED	BKB



SECTION THRU ABUTMENT

Showing Soil Reinforcement and Coping with Precast panels

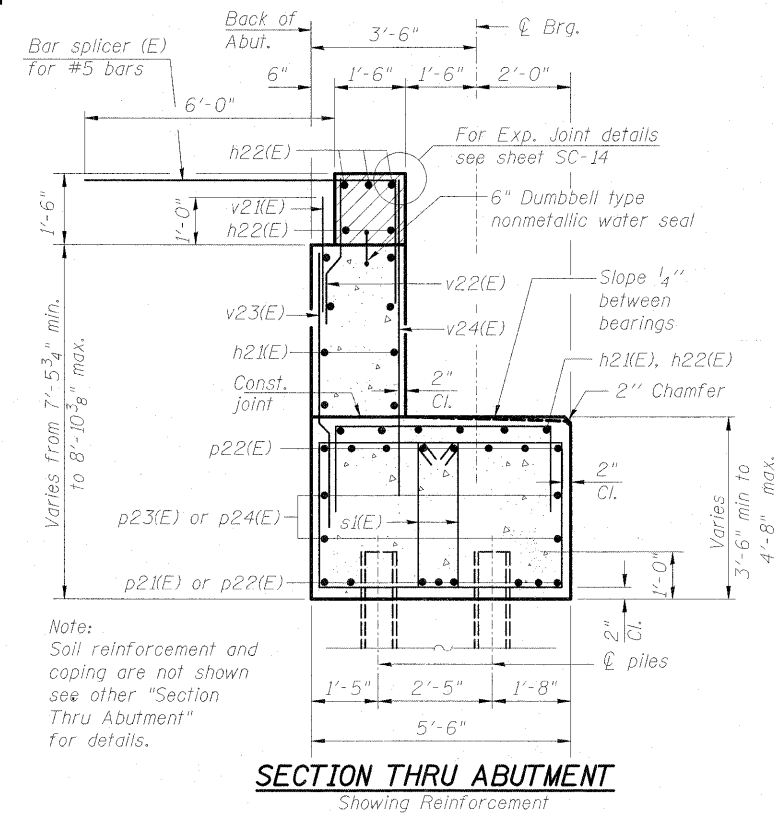
Note X: Dimension d is based on $Q_u=1.5$ tons/sq. Ft. and moisture content less than 30%.



COPING DETAILS

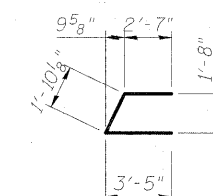
Cost of Coping including Reinforcement in the Coping is included in the pay item "Mechanically Stabilized Earth Retaining Wall".

Removal of unsuitable material.

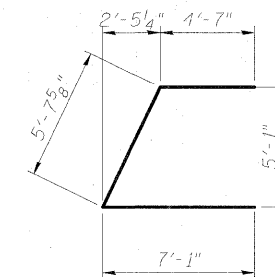


SECTION THRU ABUTMENT

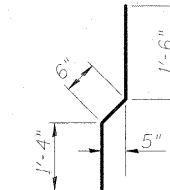
Showing Reinforcement



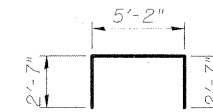
BAR u22(E)



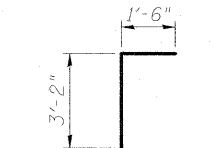
BARS u21(E)



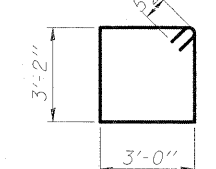
BAR v24(E)



BAR u25(E)



BAR u26(E)



BARS s21(E)

BILL OF MATERIAL

Bar	No.	Size	Length	Shape
h21(E)	24	#5	23'-3"	
h22(E)	10	#6	34'-5"	
h23(E)	15	#5	14'-4"	
h24(E)	5	#5	7'-4"	
p21(E)	8	#8	22'-2"	
p22(E)	32	#8	28'-10"	
p23(E)	4	#7	22'-2"	
p24(E)	8	#7	28'-8"	
p25(E)	8	#8	24'-0"	
s21(E)	126	#5	13'-3"	
u21(E)	10	#6	17'-4"	
u22(E)	10	#5	7'-10"	
u25(E)	42	#5	8'-4"	
u26(E)	32	#5	4'-8"	
v21(E)	67	#5	2'-10"	
v22(E)	67	#4	3'-4"	
v23(E)	67	#5	6'-2"	
v24(E)	67	#5	7'-4"	
Concrete Structures	Cu. Yd.		76.1	
Reinforcement Bars, Epoxy Coated	Pound		9,410	
Furnishing Steel Piles HP12X53	Foot		504	
Driving Piles	Foot		504	
Test Pile Steel HP12X53	Each		1	
Bar Splicers	Each		62	
Concrete Sealer	Sq. Ft.		234	
Mechanically Stabilized Earth Retaining Wall	Sq. Ft.		1,822	
Removal and Disposal of Unsuitable Material for Structures	Cu. Yd.		139	

Notes:

At Section thru Abutment showing hatched area to be poured after superstructure false work has been removed. Quantity of concrete included with Concrete Superstructure. Space reinforcement in cap to miss anchor bolts. Pour steps monolithically with cap. Quantity of concrete in end post included with Concrete Superstructure on sheet SC-13. For details of Bar Splicers, see sheet SC-35. For details of piles, see sheet SC-34. Quantity of embankment fill is included with roadway quantities.

EAST ABUTMENT DETAILS
STRUCTURE NO. 099-0348

SHEET NO. SC-29 SHEETS SC-37	F.A.I. RTE.	SECTION	COUNTY	TOTAL SHEETS	SHEET NO.
	55	(99-1&2) R-6	WILL	756	555
	CONTRACT NO. 60F12				
FED. ROAD DIST. NO.		ILLINOIS FED. AID PROJECT			



McDonough Associates Inc.
Engineers / Architects
130 East Randolph Street
Chicago, Illinois 60601
(312) 946-8600