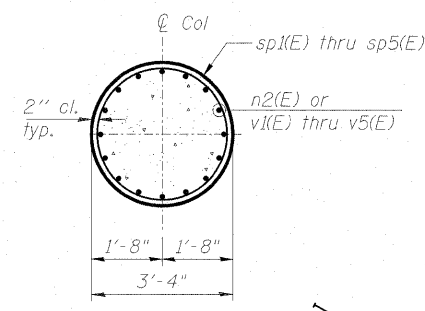


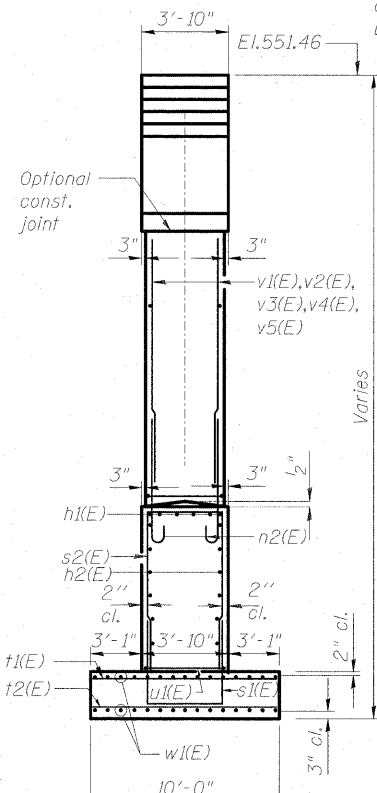
STATE OF ILLINOIS
DEPARTMENT OF TRANSPORTATION

BILL OF MATERIAL

Bar	No.	Size	Length	Shape
h1(E)	14	#9	34'-6"	—
h2(E)	32	#5	32'-0"	—
h3(E)	12	#7	38'-3"	—
n1(E)	10	#6	5'-0"	U
n2(E)	80	#9	9'-3"	U
p1(E)	20	#10	36'-0"	—
p2(E)	20	#10	49'-3"	—
p3(E)	14	#10	33'-9"	—
p4(E)	20	#5	13'-0"	—
p5(E)	4	#5	11'-6"	—
p6(E)	8	#7	6'-2"	—
p7(E)	4	#7	6'-6"	—
s1(E)	115	#6	11'-8"	U
s2(E)	115	#6	17'-2"	U
s3(E)	40	#6	7'-11"	U
s4(E)	73	#5	7'-6"	U
s5(E)	230	#6	13'-2"	U
s6(E)	40	#6	9'-1"	U
**sp1(E)	1	#4	12'-0"	W
**sp2(E)	1	#4	12'-6"	W
**sp3(E)	1	#4	13'-1"	W
**sp4(E)	1	#4	13'-8"	W
**sp5(E)	1	#4	14'-4"	W
t1(E)	66	#6	9'-8"	—
t2(E)	66	#7	9'-8"	—
u1(E)	24	#6	14'-2"	U
v1(E)	16	#9	14'-3"	—
v2(E)	16	#9	14'-10"	—
v3(E)	16	#9	15'-5"	—
v4(E)	16	#9	16'-0"	—
v5(E)	16	#9	16'-8"	—
v6(E)	10	#6	6'-8"	—
w1(E)	56	#5	33'-8"	—
Braced Excavation		Cu. Yd.	123	
Concrete Structures		Cu. Yd.	165.4	
Reinforcement Bars, Epoxy Coated		Pound	36,260	
Rock Excavation for Structures		Cu. Yd.	65	



SECTION B-B



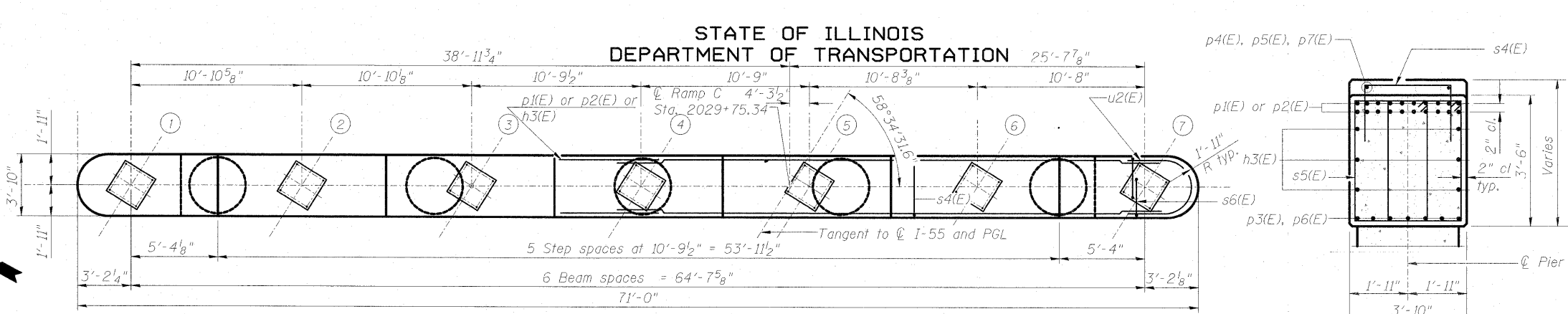
END VIEW

MINIMUM BAR LAP

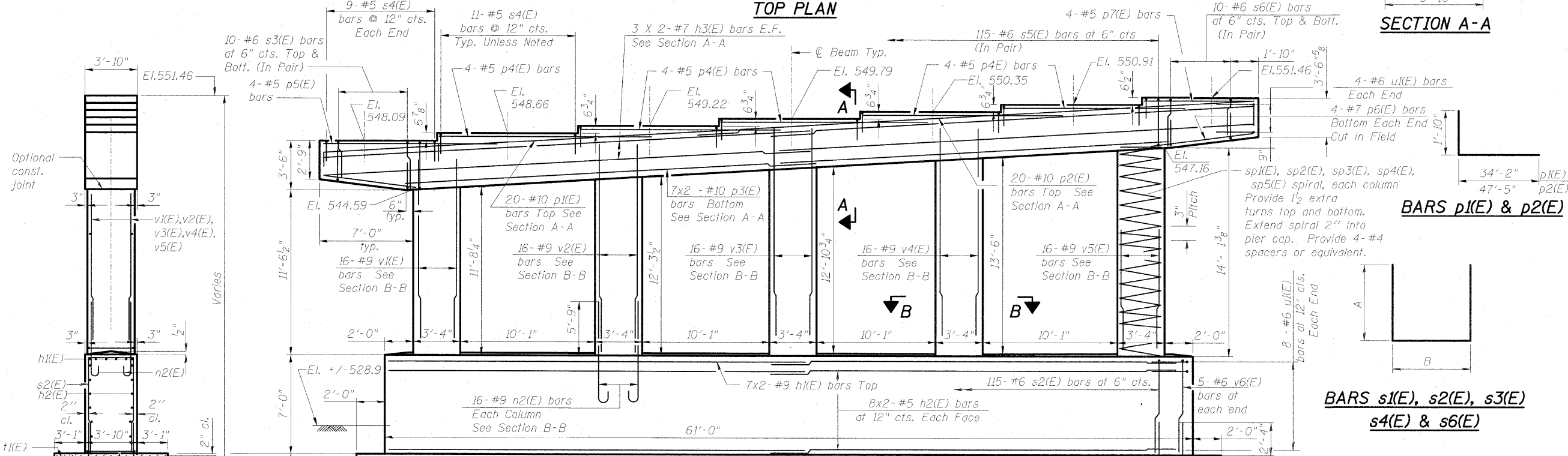
(Pier)

*Top bars	Other bars
#5 bar = 3'-0"	#5 bar = 2'-2"
#7 bar = 4'-10"	#6 bar = 2'-7"
#9 bar = 8'-1"	#7 bar = 3'-5"
#10 bar = 10'-3"	#8 bar = 4'-6"
	#9 bar = 5'-9"
	#10 bar = 7'-3"

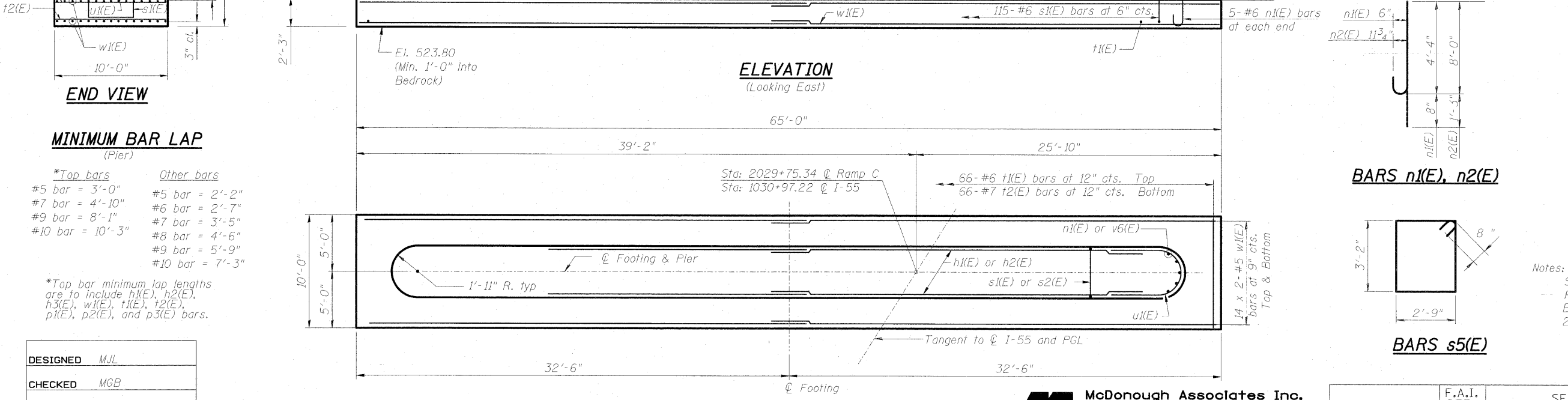
*Top bar minimum lap lengths are to include h1(E), h2(E), h3(E), w1(E), t1(E), t2(E), p1(E), p2(E), and p3(E) bars.



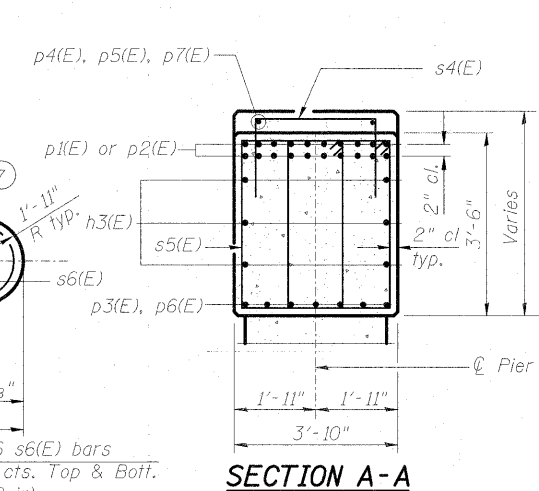
TOP PLAN



ELEVATION
(Looking East)

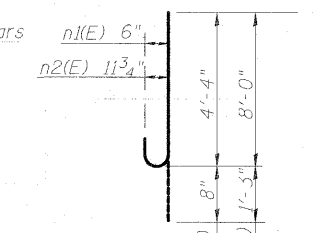


FOOTING PLAN

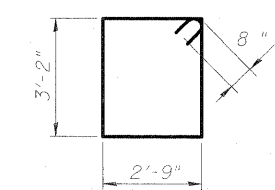


SECTION A-A

BARS s1(E), s2(E), s3(E), s4(E) & s6(E)



BARS n1(E), n2(E)



BARS s5(E)

** Length is height of spiral.

A & B DIMENSIONS

Bar	A	B
s1(E)	4'-1"	3'-6"
s2(E)	6'-10"	3'-6"
s3(F)	2'-7"	2'-9"
s4(E)	2'-0"	3'-6"
s6(E)	3'-2"	2'-9"

BAR u1(E)

Notes:
Space reinforcement in cap to miss anchor bolts.
Pour steps monolithically with cap.
Bars indicated thus 2 x 3-#6 etc. indicates 2 lines of bars with 3 lengths per line.

**PIER
STRUCTURE NO. 099-0348**

DESIGNED	MJL
CHECKED	MGB
DRAWN	MJL
CHECKED	BKB



McDonough Associates Inc.
Engineers / Architects
130 East Randolph Street
Chicago, Illinois 60601
(312) 946-8600

SHEET NO.	F.A.T. RTE.	SECTION	COUNTY	TOTAL SHEETS	SHEET NO.
SC-30	55	(99-1&2) R-6	WILL	756	556
SHEETS SC-37				CONTRACT NO. 60F12	
FED. ROAD DIST. NO.			ILLINOIS	FED. AID PROJECT	