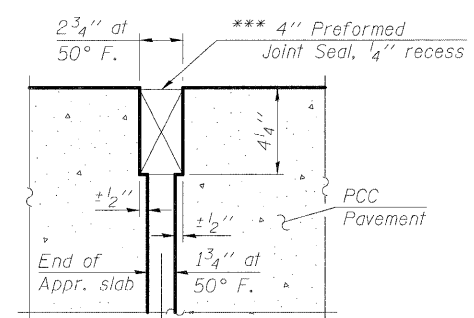
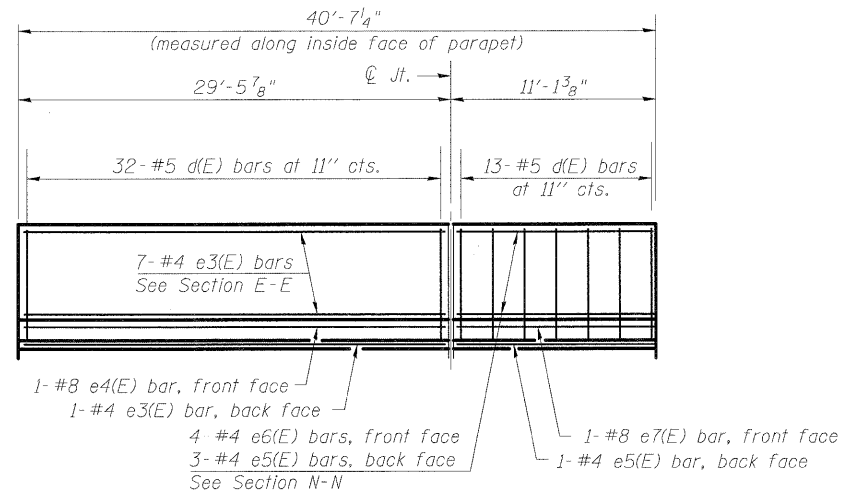
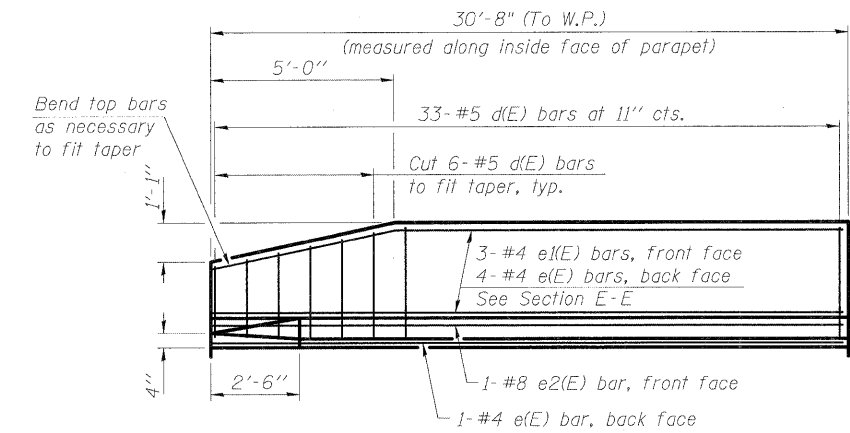
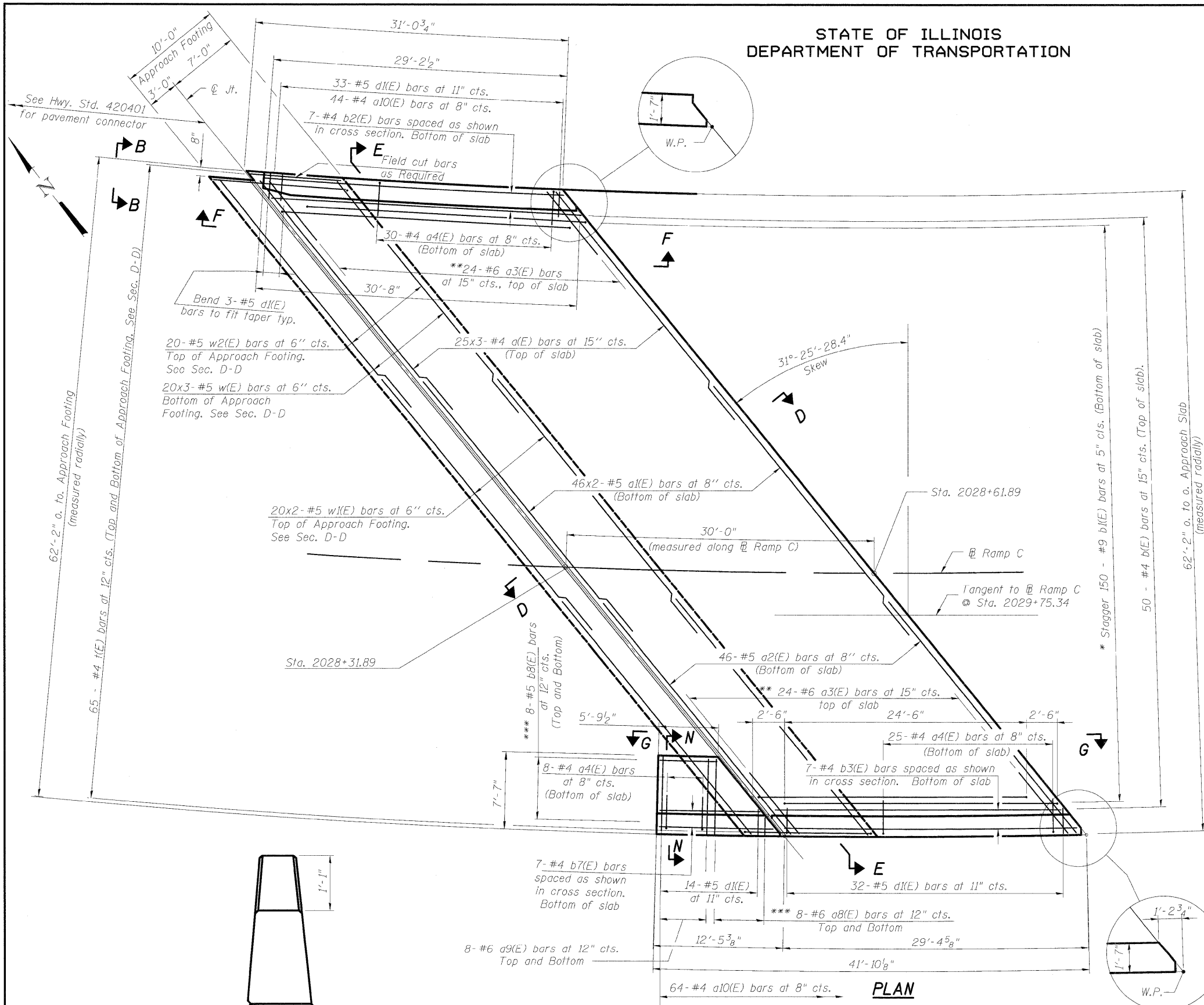
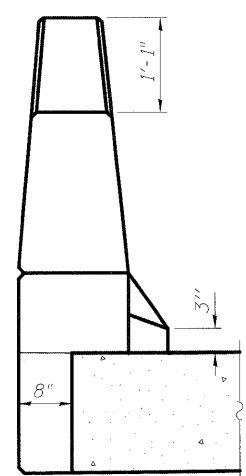


STATE OF ILLINOIS
DEPARTMENT OF TRANSPORTATION

Notes:
See sheet SC-33 for Sections D-D, E-E and N-N.
a(E), a1(E), a2(E), w(E), w1(E) and w2(E) bar spacings measured perpendicular to Ramp C.



Notes:
See Sheet SC-33
For Bill of Material.
For Section J-J
see Sheet SC-32.



VIEW B-B

* Tilt #9 b5(E) bars as required to maintain clearance.
** Alternate with a(E) bars.
*** Order a8(E) & b8(E) bars full length.
Cut to fit skew in bottom of slab and
use remainder in top of slab.

DESIGNED	MGB
CHECKED	BKB
DRAWN	AMV
CHECKED	BKB

McDonough Associates Inc.
Engineers / Architects
130 East Randolph Street
Chicago, Illinois 60601
(312) 946-8600

SHEET NO. SC-31 SHEETS SC-37	F.A.I. RTE.	SECTION	COUNTY	TOTAL SHEETS	SHEET NO.
	55	(99-1&2) R-6	WILL	756	557
FED. ROAD DIST. NO.			ILLINOIS	FED. AID PROJECT	
CONTRACT NO. 60F12					

WEST APPROACH SLAB DETAILS
STRUCTURE NO. 099-0348