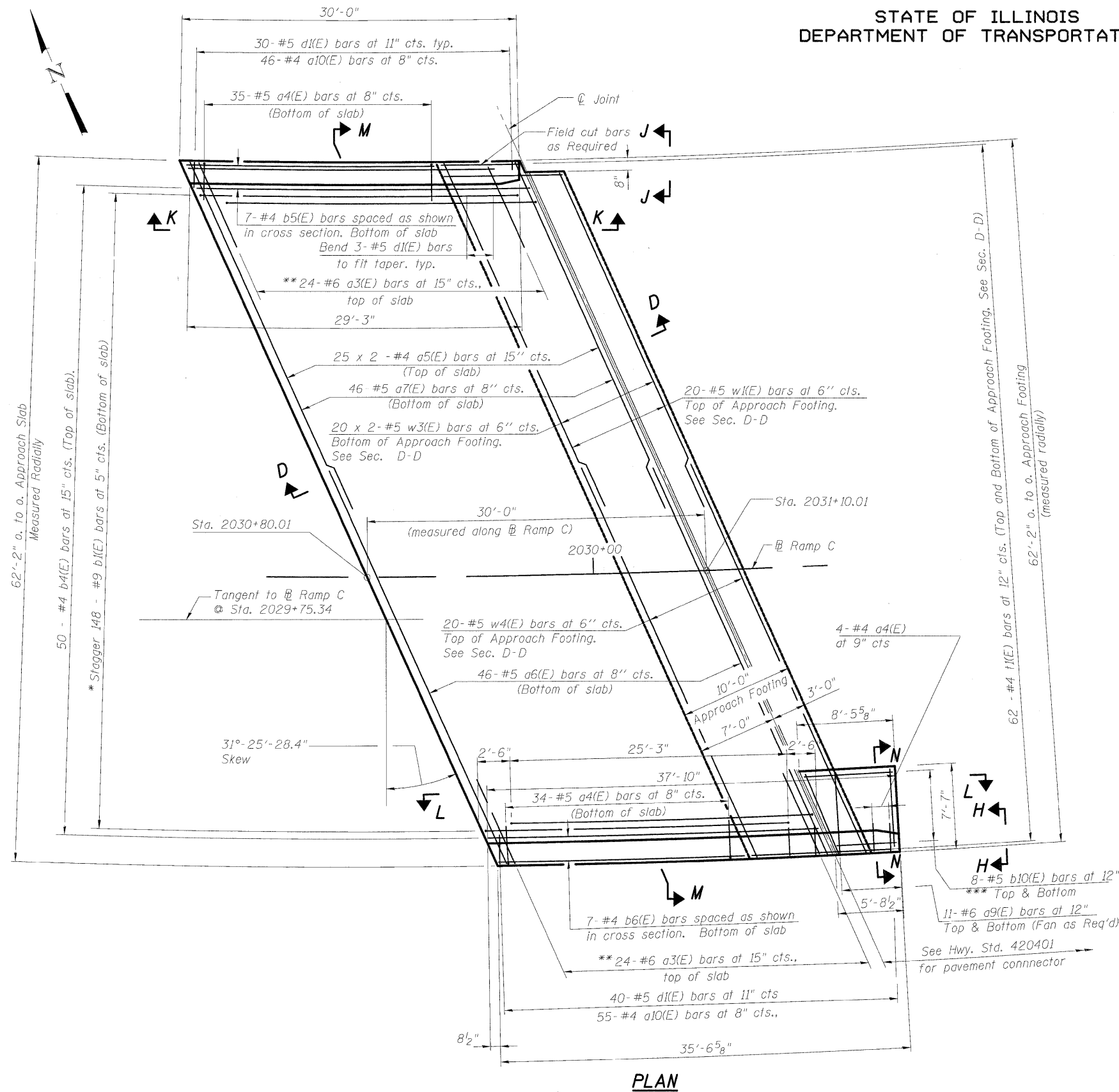


STATE OF ILLINOIS
DEPARTMENT OF TRANSPORTATION

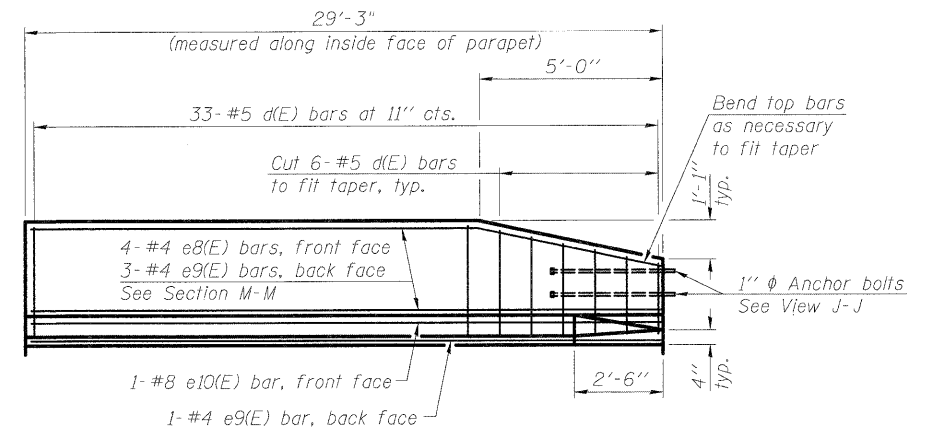
Notes:
See sheet SC-33 for Sections D-D, E-E and M-M.
a5(E), a6(E), a7(E), w1(E), w3(E) and w4(E) bar spacings measured perpendicular to Ramp C.



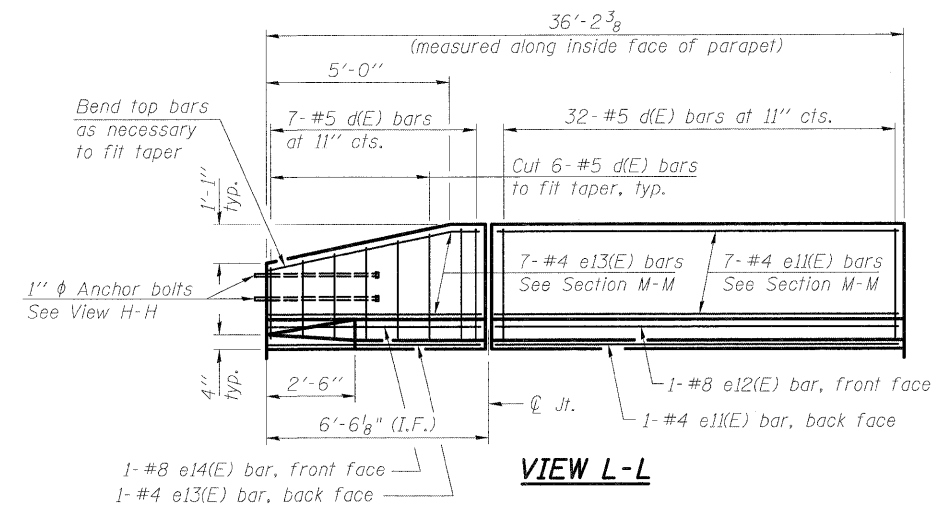
PLAN

* Tilt #9 b5(E) bars as required to maintain clearance.
** Alternate with a5(E) bars.
*** Order b10(E) bars full length.
Cut to fit skew in bottom of slab and use remainder in top of slab.

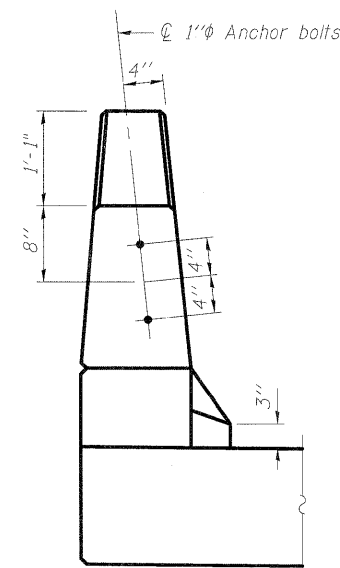
See Sheet SC-33
for Bill of Material



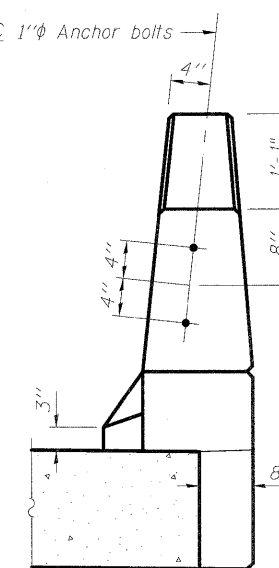
VIEW K-K



VIEW L-L



VIEW H-H



VIEW J-J

EAST APPROACH SLAB DETAILS
STRUCTURE NO. 099-0348

DESIGNED	MGB
CHECKED	BKB
DRAWN	AMV
CHECKED	BKB

McDonough Associates Inc.
Engineers / Architects
130 East Randolph Street
Chicago, Illinois 60601
(312) 946-8600

SHEET NO. SC-32 SHEETS SC-37	F.A.I. RTE.	SECTION	COUNTY	TOTAL SHEETS	SHEET NO.
	55	(99-1&2) R-6	WILL	756	558
FED. ROAD DIST. NO.			ILLINOIS FED. AID PROJECT		
CONTRACT NO. 60F12					