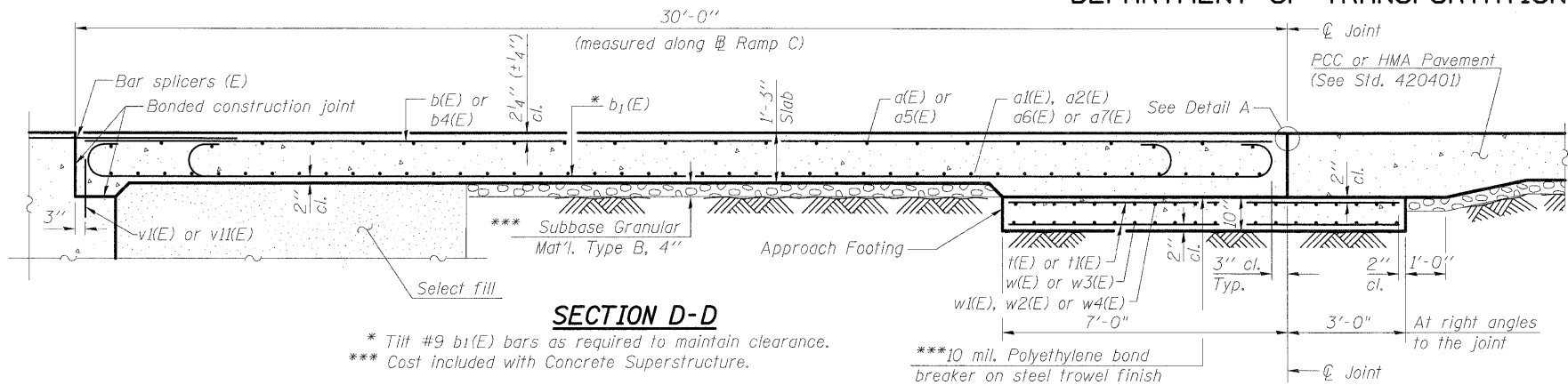


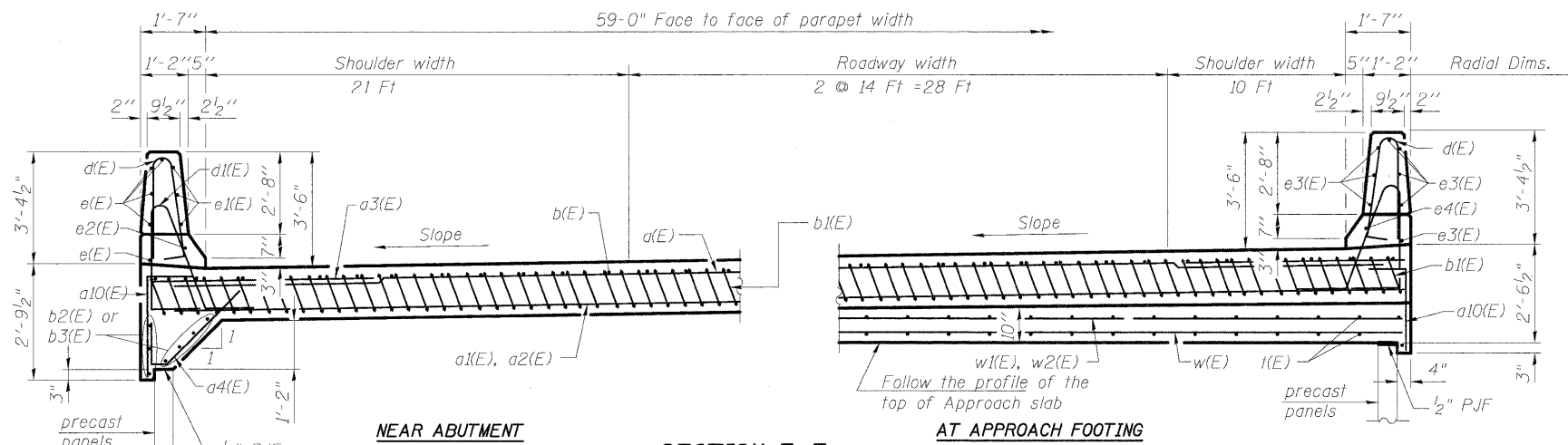
STATE OF ILLINOIS
DEPARTMENT OF TRANSPORTATION



SECTION D-D

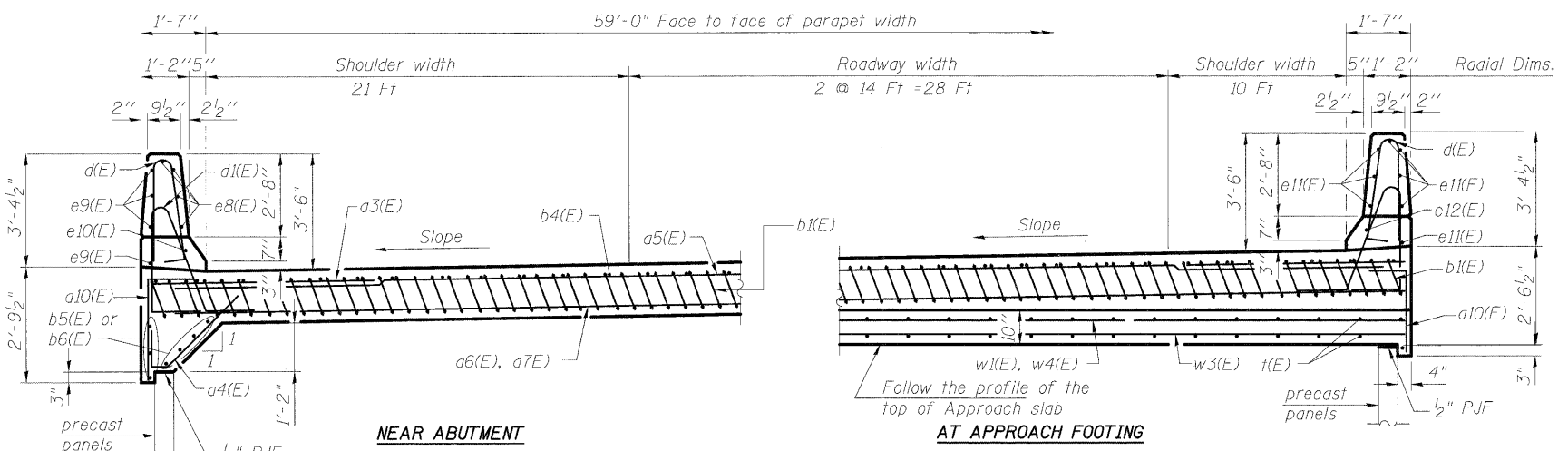
* Tilt #9 b1(E) bars as required to maintain clearance.
*** Cost included with Concrete Superstructure.

***10 mil. Polyethylene bond breaker on steel trowel finish



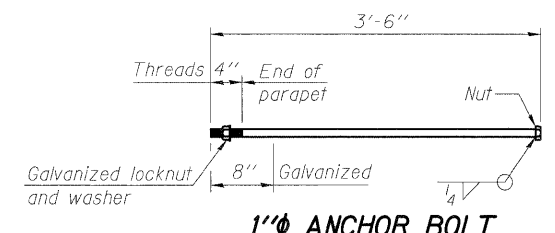
SECTION E-E

(See Plan for dimensions not shown)



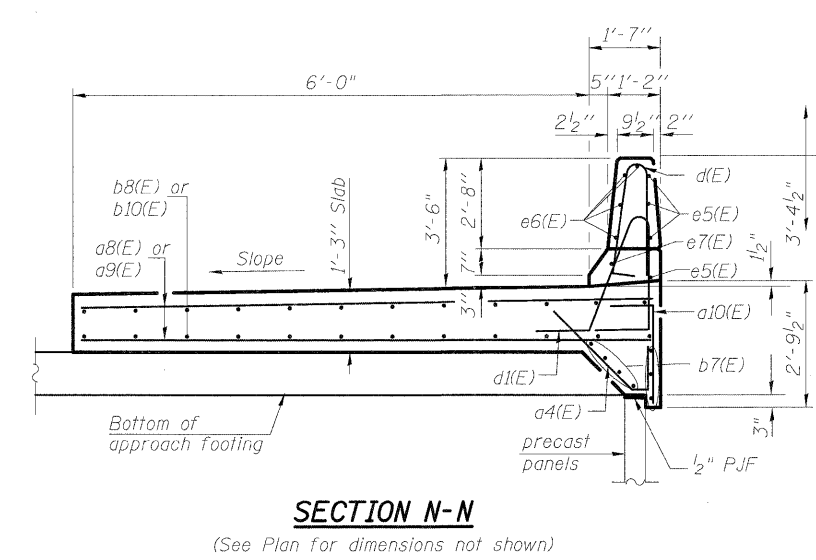
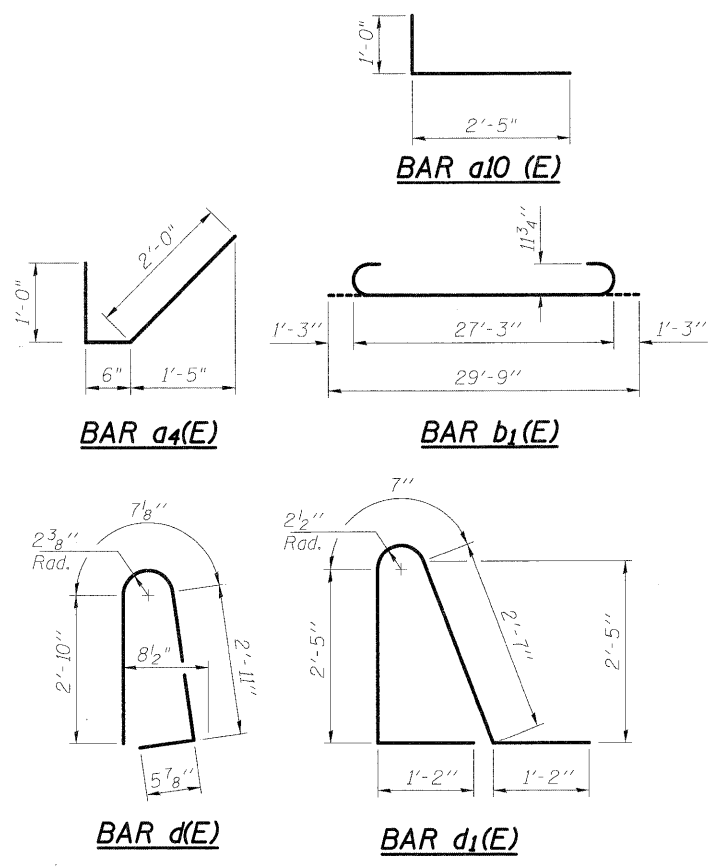
SECTION M-M

(See Plan for dimensions not shown)



1" ANCHOR BOLT

(Cost included with Concrete Superstructure)



SECTION N-N

(See Plan for dimensions not shown)

**BILL OF MATERIAL
EAST & WEST APPROACHES**

Bar	No.	Size	Length	Shape
a(E)	75	#4	28'-11"	
a1(E)	92	#5	30'-4"	
a2(E)	46	#5	26'-6"	
a3(E)	96	#6	6'-6"	
a4(E)	137	#4	3'-6"	✓
a5(E)	50	#4	35'-0"	
a6(E)	46	#5	36'-6"	
a7(E)	46	#5	33'-0"	
a8(E)	8	#6	14'-0"	
a9(E)	38	#6	7'-3"	
a10(E)	209	#4	3'-5"	┌
b(E)	50	#4	29'-2"	
b1(E)	298	#9	29'-9"	┌
b2(E)	7	#4	21'-0"	
b3(E)	7	#4	20'-0"	
b4(E)	50	#4	29'-10"	
b5(E)	7	#4	22'-4"	
b6(E)	7	#4	22'-0"	
b7(E)	7	#4	12'-3"	
b8(E)	8	#5	17'-8"	
b10(E)	8	#5	16'-10"	
d(E)	154	#5	6'-10"	┌
d1(E)	154	#5	7'-11"	┌
e(E)	5	#4	28'-10"	
e1(E)	3	#4	30'-4"	
e2(E)	1	#8	30'-4"	
e3(E)	8	#4	29'-3"	
e4(E)	1	#8	29'-3"	
e5(E)	4	#4	10'-10"	
e6(E)	4	#4	10'-2"	
e7(E)	1	#8	10'-10"	
e8(E)	4	#4	29'-0"	
e9(E)	4	#4	29'-8"	
e10(E)	1	#8	29'-0"	
e11(E)	8	#4	29'-5"	
e12(E)	1	#8	29'-5"	
e13(E)	8	#4	6'-2"	
e14(E)	1	#8	6'-2"	
f(E)	130	#4	12'-9"	
i1(E)	124	#4	10'-6"	
w(E)	60	#5	28'-10"	
w1(E)	60	#5	30'-0"	
w2(E)	20	#5	26'-7"	
w3(E)	40	#5	34'-6"	
w4(E)	20	#5	38'-11"	
Concrete Superstructure			Cu. Yd.	259.2
Concrete Structures			Cu. Yd.	47.5
Reinforcement Bars, Epoxy Coated			Pound	57,460

Notes:

See sheet SC-31 for Detail A.
Approach slab and parapet concrete shall be paid for as Concrete Superstructure.
Approach footing concrete shall be paid for as Concrete Structures.
Reinforcement shall be paid for as Reinforcement Bars, Epoxy Coated.
For v(E) bar details, see sheets SC-24, SC-26, SC-27 & SC-29.
The approach footing maximum applied service bearing pressure (Qmax) = 2.0 ksf.
For bar splicer details, see sheet SC-35.
Cost of excavation for approach footing included with Concrete Structures.
For select fill see Sheets SC-26 & SC-29.

DESIGNED	MGB
CHECKED	BKB
DRAWN	AMV
CHECKED	BKB



McDonough Associates Inc.
Engineers / Architects
130 East Randolph Street
Chicago, Illinois 60601
(312) 946-8600

SHEET NO. SC-33 SHEETS SC-37	F.A.I. RTE.	SECTION	COUNTY	TOTAL SHEETS	SHEET NO.
	55	(99-1&2) R-6	WILL	756	559
FED. ROAD DIST. NO.			ILLINOIS FED. AID PROJECT		
CONTRACT NO. 60F12					

**APPROACH SLAB DETAILS
STRUCTURE NO. 099-0348**