

F.A.I. RTE.	SECTION	COUNTY	TOTAL SHEETS	SHEET NO.
55	99-2HB-2B-1	WILL	756	564
FED. ROAD DIST. NO. 1		ILLINOIS	CONTRACT NO. 60F12	

**FOR INDEX OF SHEETS, SEE SHEET NO. 2 (VOLUME I)
FOR INDEX OF SHEETS, SEE SHEET NO. 333 (VOLUME II)
FOR INDEX OF SHEETS, SEE SHEET NO. 565 (VOLUME III)**

STATION EQUATIONS:

STA 5025+24.74 BK C WEST FRONTAGE ROAD =
STA 4000+00.00, 12.00' LT AH RAMP D =
STA 6000+00.00 AH C WEST FRONTAGE CONNECTOR

STA 2038+02.19 BK C RAMP C (PT) =
STA 100+00.00 AH C RAMP E (PC) =
STA 7021+82.16, 36.00' RT BK RAMP A

STA 126+08.25, 21.00' LT BK END C RAMP E =
STA 3000+00.00, 21.00' LT AH C RAMP B =
STA 900+00.00 AH C ARSENAL ROAD =
STA 1050+03.08, 146.78' RT C I-55

STA 3059+93.02 C RAMP B =
STA 1063+08.95, OFF 44.65' RT C I-55

STA 1999+91.99 C RAMP C =
STA 1058+95.57, OFF 44.11' LT C I-55

**STATE OF ILLINOIS
DEPARTMENT OF TRANSPORTATION**

DIVISION OF HIGHWAYS

**PROPOSED
HIGHWAY PLANS**

ROUTE FAI 55 (I-55)

SECTION 99-2HB-2B-1

PROJECT

I-55 AT ARSENAL ROAD

INTERCHANGE RECONSTRUCTION

WILL COUNTY

C-91-033-09

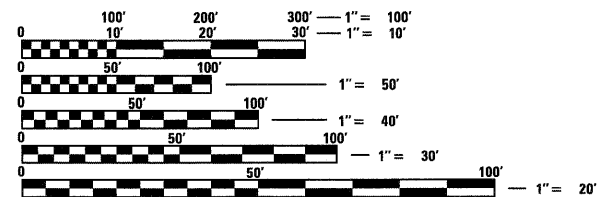
VOLUME III

DESIGN DESIGNATION

I-55 RAMP A 5700(10) INTERSTATE - CLASS I TRUCK ROUTE 11.34 (JPCP-20)
I-55 RAMP B 18500(10) INTERSTATE - CLASS I TRUCK ROUTE 18.20 (JPCP-20)
I-55 RAMP C 18500(10) INTERSTATE - CLASS I TRUCK ROUTE 18.20 (JPCP-20)
I-55 RAMP D 5400(10) INTERSTATE - CLASS I TRUCK ROUTE 11.34 (JPCP-20)
I-55 RAMP E 24200(10) INTERSTATE - CLASS I TRUCK ROUTE 18.20 (JPCP-20)
ARSENAL ROAD 35900(10) SUBURBAN STRATEGIC REGIONAL ARTERIAL (SRA) -
CLASS I TRUCK ROUTE 22.47 (JPCP-20)

EAST FRONTAGE ROAD 3400(10) COLLECTOR STREET 3.20 (BIT-20)
WEST FRONTAGE CONNECTOR 4900(10) COLLECTOR STREET 4.63 (JPCP-20)
WEST FRONTAGE ROAD 4900(10) COLLECTOR STREET 3.20 (BIT-20)

DESIGN SPEED: I-55 = 70 MPH
ARSENAL ROAD = 50 MPH
EAST FRONTAGE ROAD = 50 MPH
WEST FRONTAGE CONNECTOR = 50 MPH
WEST FRONTAGE ROAD = 50 MPH
RAMP'S A, C, D & E = 50 MPH
RAMP B = 40 MPH

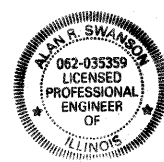


FULL SIZE PLANS HAVE BEEN PREPARED USING STANDARD ENGINEERING SCALES. REDUCED SIZED PLANS WILL NOT CONFORM TO STANDARD SCALES. IN MAKING MEASUREMENTS ON REDUCED PLANS, THE ABOVE SCALES MAY BE USED.

**J.U.L.I.E.
JOINT UTILITY LOCATION INFORMATION FOR EXCAVATION
1-800-892-0123
OR 811**

**DISTRICT 1 NO. (847) 705-4523
PROJECT ENGINEER: HELEN PAZON**

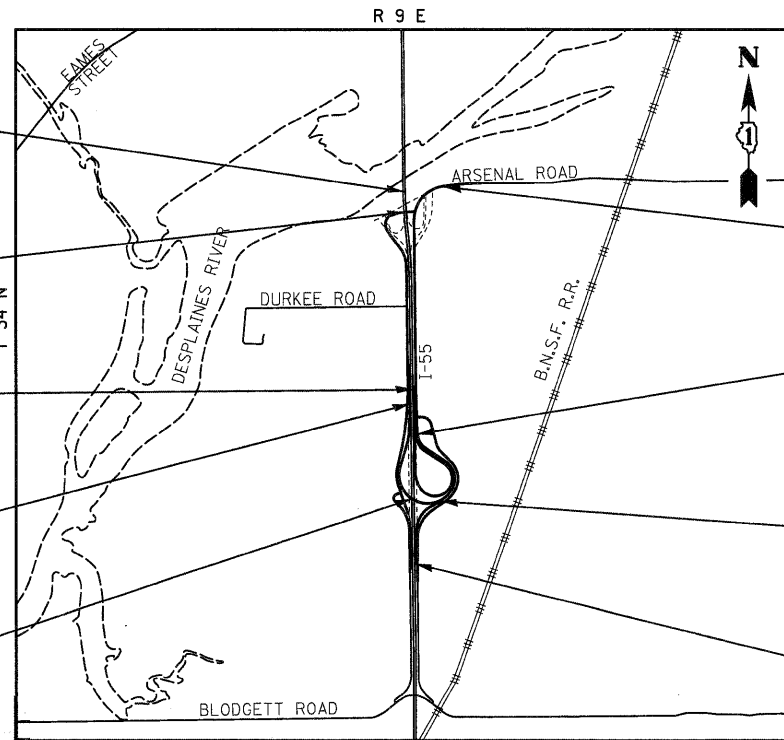
CONTRACT NO. 60F12



SIGNATURE: *Alan R. Swanson*
DATE: 01/27/2011
NAME: ALAN R. SWANSON
EXP. 11/30/2011
SHEETS: 1-86, 148-166, 204-219, 253-317, 332-333, 564-565, 585-756



SIGNATURE: *Gerald E. Koynass*
DATE: 1/27/2011
NAME: GERALD E. KOYNASS
EXP. 11/30/2011
SHEETS: 318-331, 437-441, 465-563



END SB I-55 IMPROVEMENT
STA 1121+26.00 C I-55

WEST FRONTAGE CONNECTOR
OVER I-55
STRUCTURE NO 099-0347
STA 6087+47.32 TO STA 6089+64.32

END IMPROVEMENT
STA 3059+93.02 C RAMP B

BEGIN IMPROVEMENT
STA 1058+95.57 C I-55
STA 1999+91.99 C RAMP C

RAMP C OVER I-55
STRUCTURE NO 099-0348
STA 2028+61.89 TO STA 2030+80.01

END IMPROVEMENT
STA 977+04.16 C ARSENAL ROAD

BEGIN IMPROVEMENT
STA 900+00.00 C ARSENAL ROAD
STA 3000+00.00 C RAMP B
END IMPROVEMENT
STA 126+08.25 C RAMP E

END IMPROVEMENT
STA 7021+82.16 RAMP A
STA 2038+02.19 C RAMP C
BEGIN IMPROVEMENT
STA 100+00.00 C RAMP E

BEGIN IMPROVEMENT
STA 7000+25.39 C RAMP A

**LOCATION MAP
SCALE= 1:2400**

LENGTH OF PROJECT

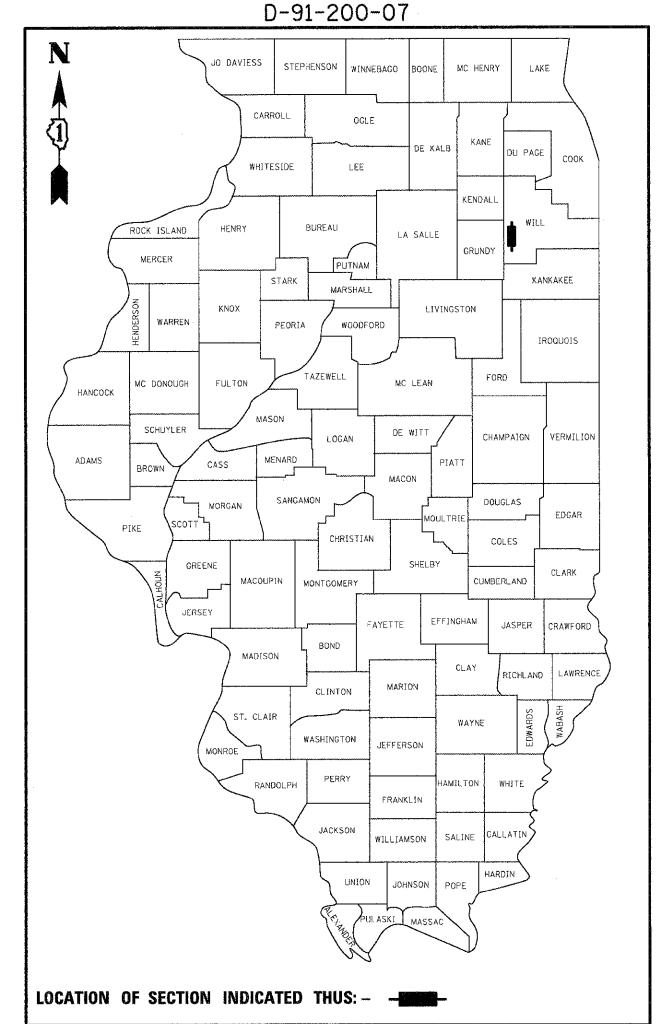
I-55 SHOULDER RECONSTRUCTION = 6,465.56 FT = 1.225 MI
RAMP A = 2,156.77 FT = 0.408 MI
RAMP B/I-55 = 8,134.07 FT = 1.541 MI
RAMP C/I-55 = 7,314.63 FT = 1.385 MI
RAMP E = 2,508.25 FT = 0.494 MI
ARSENAL ROAD = 5,565.75 FT = 1.054 MI
WEST FRONTAGE CONNECTOR = 1,402.58 FT = 0.266 MI
GROSS AND NET LENGTH = 30,140.54 FT = 5.709 MI



SIGNATURE: *S. S. Rikhiraj*
DATE: 1/27/2011
NAME: SADHU SINGH RIKHIRAJ
EXP. 11/30/2011
SHEETS: 167-203

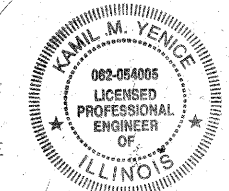


SIGNATURE: *Richard A. Young*
DATE: 1/27/2011
NAME: RICHARD A. YOUNG
EXP. 11/30/2011
SHEETS: 87-147



LOCATION OF SECTION INDICATED THIS:

Kamil Yenice
SIGNATURE:
DATE: 2/4/11
NAME: KAMIL YENICE
EXP. 11/30/2011
SHEETS: 347-436



**STATE OF ILLINOIS
DEPARTMENT OF TRANSPORTATION
DIVISION OF HIGHWAYS**

SUBMITTED _____ 20 _____

DEPUTY DIRECTOR OF HIGHWAYS, REGION ENGINEER

ENGINEER OF DESIGN AND ENVIRONMENT

DIRECTOR OF HIGHWAYS, CHIEF ENGINEER

**PRINTED BY THE AUTHORITY
OF THE STATE OF ILLINOIS**