




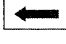






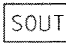
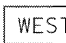

ROUTE MARKERS

-  FOR U.S. ROUTES
M1-40-2424
-  FOR ILLINOIS ROUTES
M1-50-2424
-  R.R. UNMARKED ROUTES
SPECIAL 24" x 18" VARIABLE
4" BLACK LETTERS ON WHITE
REFLECTIVE BACKGROUND

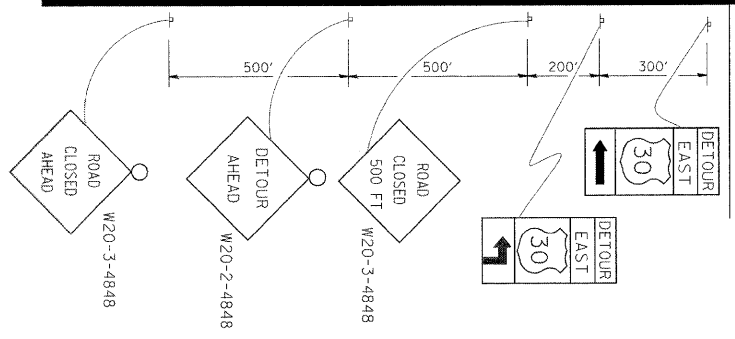
ARROWS SIGNS

-  M5-1L-2115
-  M5-1R-2115
-  M6-1-2115
-  M6-1-2115
-  M6-3-2115

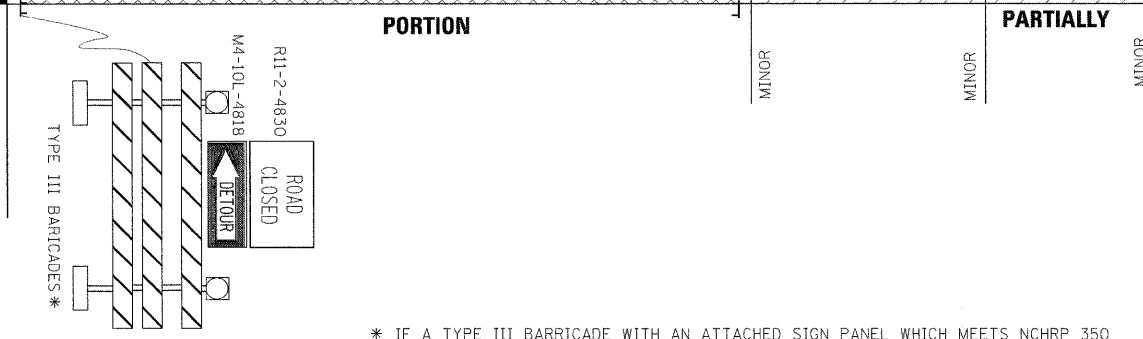
CARDINAL DIRECTION & DETOUR SIGNS

-  NORTH M3-1-2412
-  EAST M3-2-2412
-  SOUTH M3-3-2412
-  WEST M3-4-2412
-  DETOUR M4-8-2412

STATE ROUTE

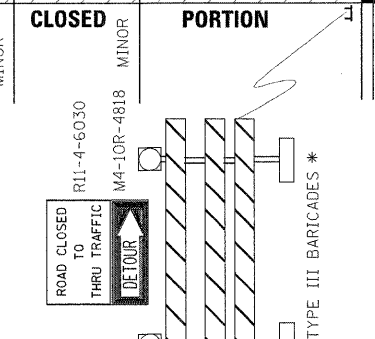


COMPLETELY CLOSED PORTION

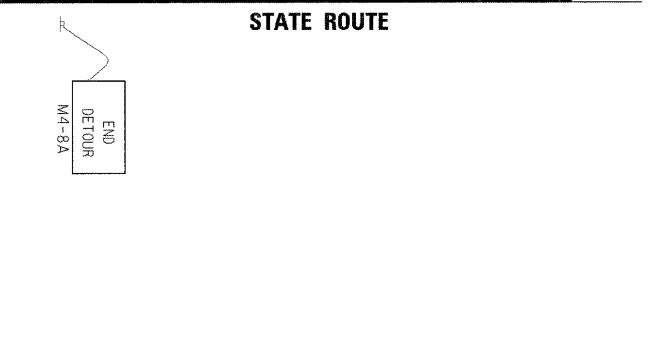


* IF A TYPE III BARRICADE WITH AN ATTACHED SIGN PANEL WHICH MEETS NCHRP 350 REQUIREMENTS IS NOT AVAILABLE, THE SIGNS SHALL BE MOUNTED, ABOVE THE BARRICADES, ON SEPARATE SIGNS SUPPORTS THAT MEET NCHRP 350 REQUIREMENTS.

PARTIALLY CLOSED PORTION



STATE ROUTE



**STATE OF ILLINOIS
DEPARTMENT OF TRANSPORTATION**

**DETOUR SIGNING
FOR CLOSING STATE HIGHWAYS**

SCALE: NONE SHEET NO. 1 OF 1 SHEETS STA. TO STA.

F.A.I. RTE.	SECTION	COUNTY	TOTAL SHEETS	SHEET NO.
55	99-2HB-2B-1	WILL	756	581
TC-21			CONTRACT NO. 60F12	
FED. ROAD DIST. NO. 1 ILLINOIS FED. AID PROJECT				

FILE NAME =	USER NAME = drivakosgn	DESIGNED -	REVISED - 10-18-02
c:\p\work\PIW\DOT\DRIVAKOSGN\8108315\4221.dgn		DRAWN -	REVISED - R. BORO 09-14-09
	PLOT SCALE = 49.9999 / IN.	CHECKED -	REVISED -
	PLOT DATE = 9/14/2009	DATE -	REVISED -