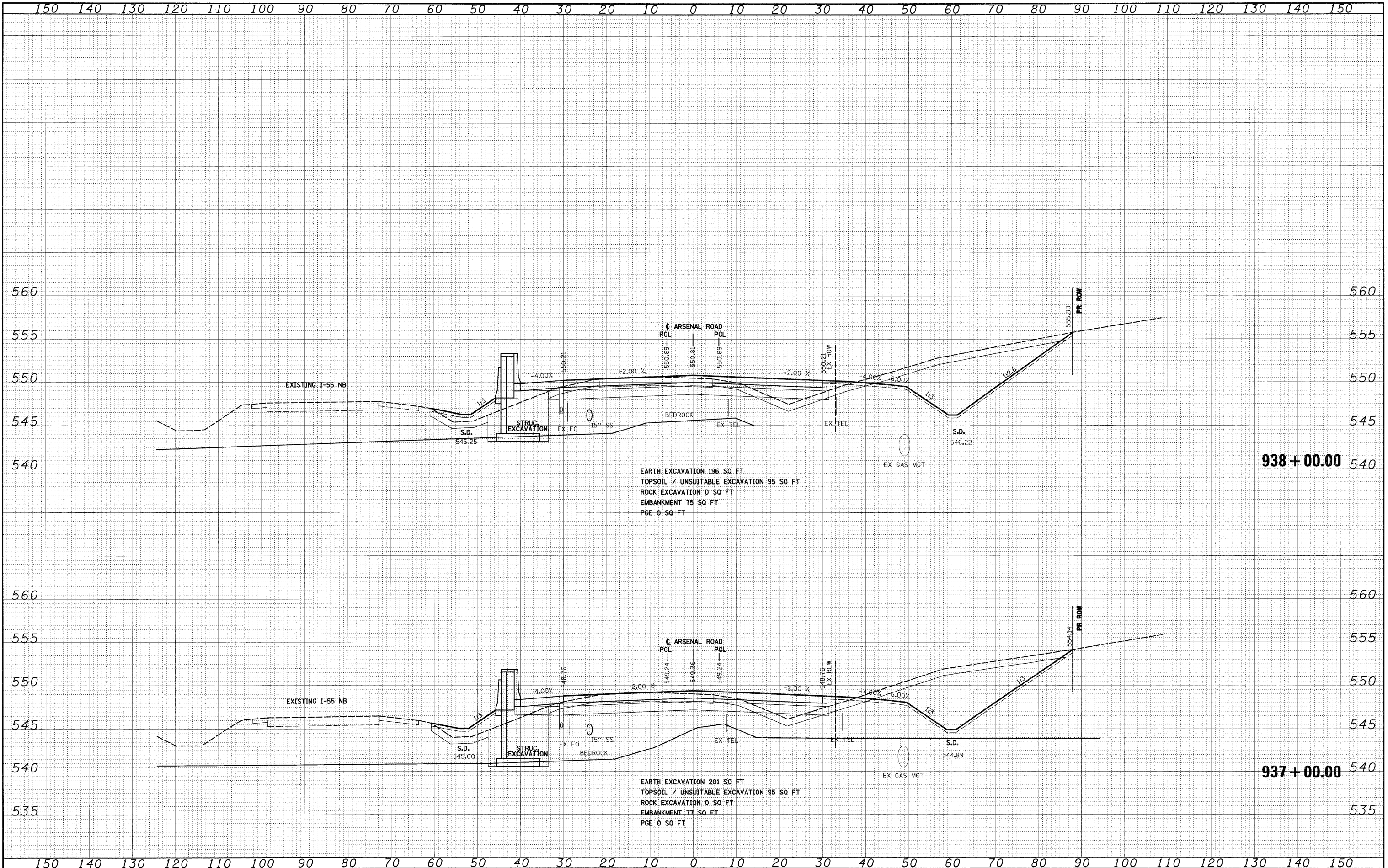


DATE	
BY	
SURVEYED	
TEMP. DATE	
AREAS CHECKED	
FINAL SURVEY	
NOTE BOOK	
NO.	

DATE	
BY	
SURVEYED	
TEMP. DATE	
AREAS CHECKED	
ORIGINAL SURVEY	
NOTE BOOK	
NO.	

McDonough Associates Inc.  
 Engineers, Architects  
 198 East Randolph Street, Chicago, Illinois 60601



EARTH EXCAVATION 196 SQ FT  
 TOPSOIL / UNSUITABLE EXCAVATION 95 SQ FT  
 ROCK EXCAVATION 0 SQ FT  
 EMBANKMENT 75 SQ FT  
 PGE 0 SQ FT

EARTH EXCAVATION 201 SQ FT  
 TOPSOIL / UNSUITABLE EXCAVATION 95 SQ FT  
 ROCK EXCAVATION 0 SQ FT  
 EMBANKMENT 77 SQ FT  
 PGE 0 SQ FT

FILE NAME = D:\60F12-SHT-XSSH101.dgn	USER NAME = TKLuegal	DESIGNED - TRK	REVISED -	<b>STATE OF ILLINOIS DEPARTMENT OF TRANSPORTATION</b>	<b>ARSENAL ROAD CROSS SECTIONS</b>	F.A.I. R.T.E.	SECTION	COUNTY	TOTAL SHEETS	SHEET NO.
PLLOT SCALE = 1:10	CHECKED - DLT	REVISED -	55			99-2HB-2B-1	WILL	756	620	
PLLOT DATE = 2/3/2011	DATE - 2/4/11	REVISED -	CONTRACT NO. 60F12							
SCALE: 1"=10'H; 1"=5'V SHEET NO. 19 OF 62 SHEETS STA. 937+00.00 TO STA. 938+00.00						FED. ROAD DIST. NO. 1 ILLINOIS FED. AID PROJECT				