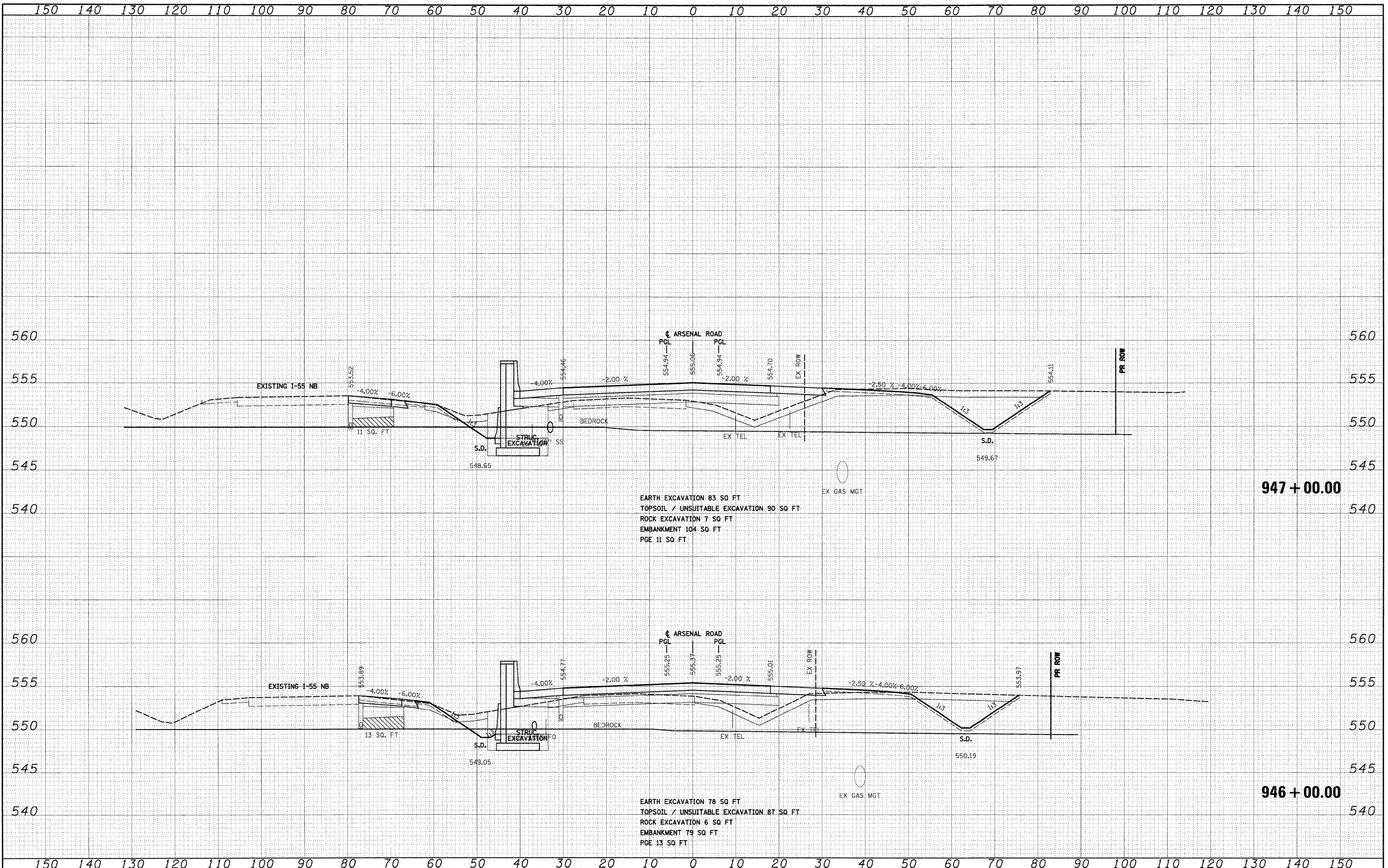


DATE	
BY	
SURVEYED	
TEMP. DATE	
AREAS CHECKED	
NO.	
FINAL SURVEY	
NOTE BOOK	
AREAS CHECKED	
NO.	

DATE	
BY	
SURVEYED	
TEMP. DATE	
AREAS CHECKED	
NO.	
ORIGINAL SURVEY	
NOTE BOOK	
AREAS CHECKED	
NO.	

McDonough Associates Inc.  
 Engineers Architects  
 181 East Randolph Street, Chicago, Illinois 60601



947 + 00.00  
 EARTH EXCAVATION 83 SQ FT  
 TOPSOIL / UNSUITABLE EXCAVATION 90 SQ FT  
 ROCK EXCAVATION 7 SQ FT  
 EMBANKMENT 104 SQ FT  
 PGE 11 SQ FT

946 + 00.00  
 EARTH EXCAVATION 78 SQ FT  
 TOPSOIL / UNSUITABLE EXCAVATION 87 SQ FT  
 ROCK EXCAVATION 6 SQ FT  
 EMBANKMENT 79 SQ FT  
 PGE 13 SQ FT

FILE NAME = D:\60F12-SHT-XSSH101.dgn	USER NAME = TKluegel	DESIGNED - TRK	REVISED -	<b>STATE OF ILLINOIS DEPARTMENT OF TRANSPORTATION</b>	<b>ARSENAL ROAD CROSS SECTIONS</b>	F.A.1 R.T.E. 55	SECTION 99-2HB-2B-1	COUNTY WILL	TOTAL SHEETS 756	SHEET NO. 626
PLOT SCALE = 1:10	CHECKED - DLT	REVISED -	SCALE: 1"=10'H; 1"=5'V SHEET NO. 25 OF 62 SHEETS			STA. 946+00.00 TO STA. 947+00.00	CONTRACT NO. 60F12			
PLOT DATE = 2/3/2011	DATE - 2/4/11	REVISED -	ILLINOIS FED. AID PROJECT							