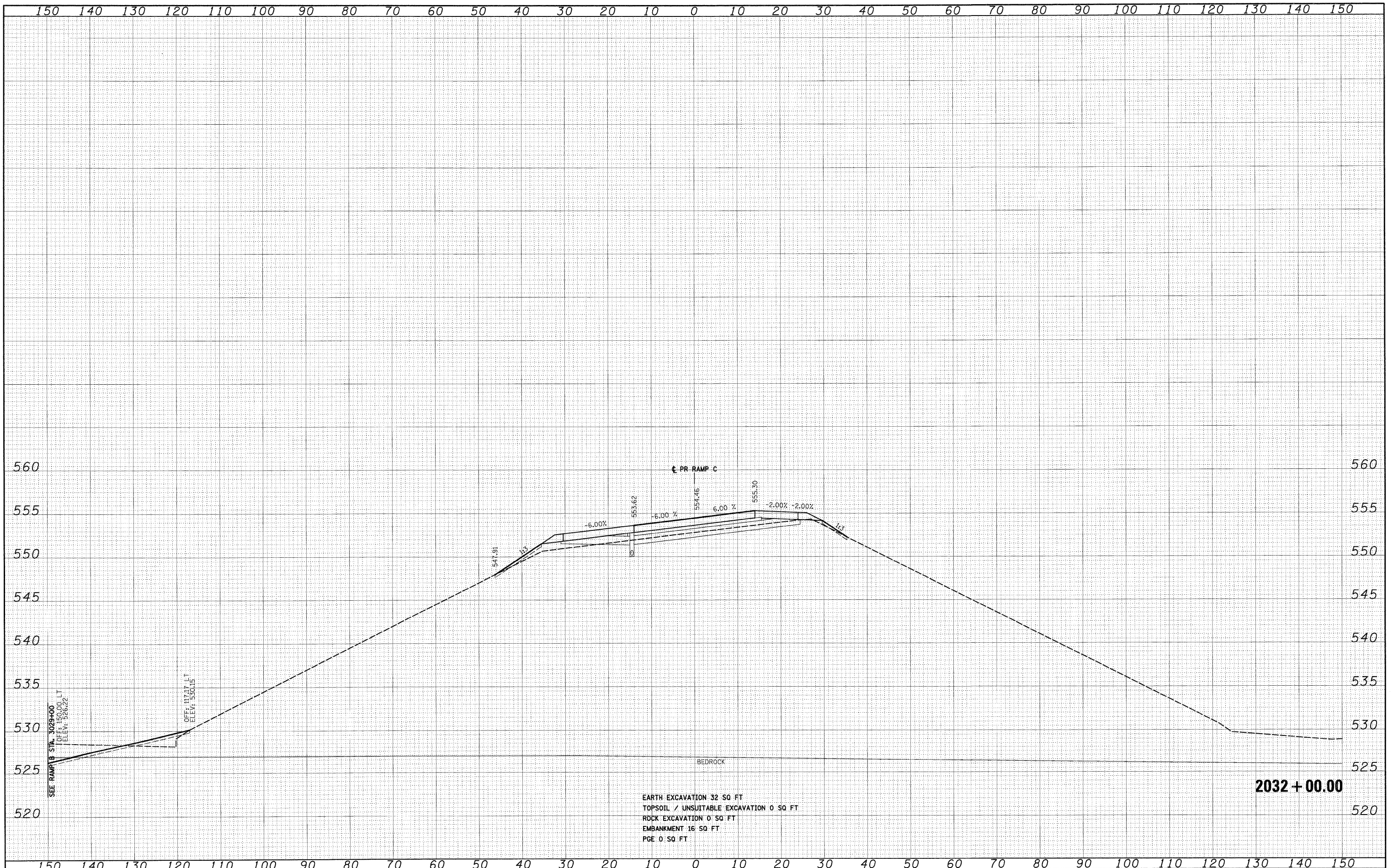


DATE	
BY	
FINAL SURVEY	
NOTED	
NOTE BOOK	
AREAS CHECKED	
NO.	

DATE	
BY	
ORIGINAL SURVEY	
NOTED	
NOTE BOOK	
AREAS CHECKED	
NO.	

McDonough Associates Inc.  
 Engineers/Architects  
 300 East Randolph Street, Chicago, Illinois 60601



FILE NAME = D:\160F12-SHT-XSSH106.dgn

USER NAME = TKluigel	DESIGNED - TRK	REVISED -
PLT SCALE = 1:10	DRAWN - TRK	REVISED -
PLT DATE = 2/3/2011	CHECKED - DLT	REVISED -
	DATE - 2/4/11	REVISED -

**STATE OF ILLINOIS  
 DEPARTMENT OF TRANSPORTATION**

**RAMP C CROSS SECTIONS**

SCALE: 1"=10'H; 1"=5'V SHEET NO. 17 OF 20 SHEETS STA. 2032+00.00 TO STA. 2032+00.00

F.A.I. RTE. 55	SECTION 99-2HB-2B-1	COUNTY WILL	TOTAL SHEETS 756	SHEET NO. 722
CONTRACT NO. 60F12			ILLINOIS FED. AID PROJECT	