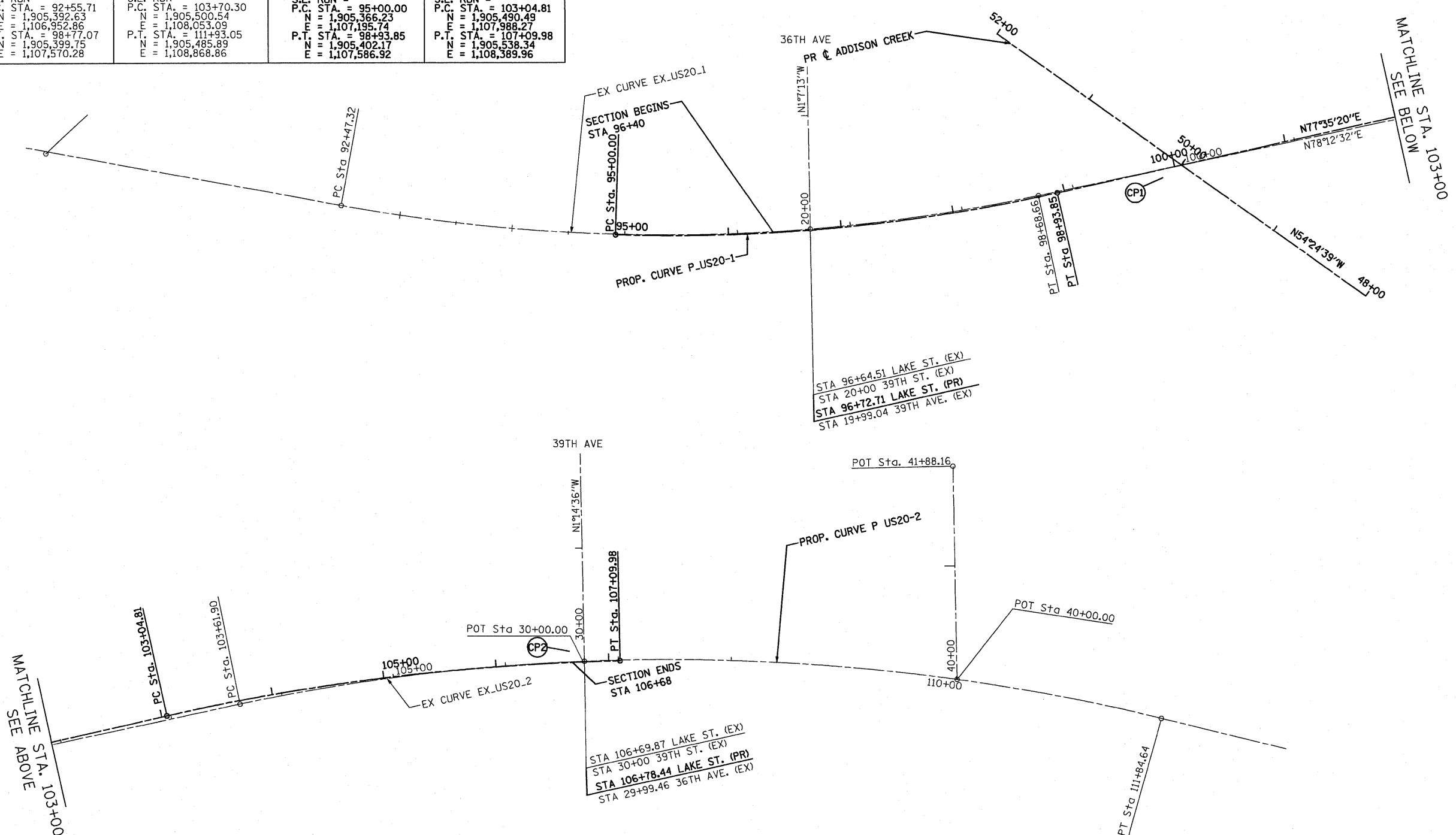


ALIGNMENT DATA

LAKE STREET - EXISTING		LAKE STREET - PROPOSED	
EX. CURVE EX_US20-1	EX. CURVE EX_US20-2	PROP. CURVE P_US20-1	PROP. CURVE P_US20-2
PI STA. = 95+70.36	PI STA. = 107+88.68	PI STA. = 96+97.96	PI STA. = 105+08.05
N = 1,905,456.93	N = 1,905,586.03	N = 1,905,359.62	N = 1,905,534.17
E = 1,107,260.87	E = 1,108,462.64	E = 1,107,393.59	E = 1,108,186.76
Δ = 22° 15' 43" (RT)	Δ = 25° 38' 21" (RT)	Δ = 14° 19' 26" (LT)	Δ = 11° 14' 13" (RT)
DR = 3° 34' 58"	DR = 3° 06' 59"	DR = 3° 38' 13"	DR = 2° 46' 24"
RT = 1,599.21'	RT = 1,838.59'	RT = 1,575.42'	RT = 2,065.96'
LT = 314.65'	LT = 418.38'	LT = 197.96'	LT = 203.24'
EF = 621.36'	EF = 822.75'	EF = 393.85'	EF = 405.18'
LF = 30.66'	LF = 47.00'	LF = 12.39'	LF = 9.97'
θ =	θ =	θ =	θ =
T.R. =	T.R. =	T.R. =	T.R. =
S.E. RUN = 92+55.71	S.E. RUN = 103+70.30	S.E. RUN = 95+00.00	S.E. RUN = 103+04.81
P.C. STA. = 92+55.71	P.C. STA. = 103+70.30	P.C. STA. = 95+00.00	P.C. STA. = 103+04.81
N = 1,905,392.63	N = 1,905,500.54	N = 1,905,366.23	N = 1,905,490.49
E = 1,106,952.86	E = 1,108,053.09	E = 1,107,195.74	E = 1,107,988.27
P.T. STA. = 98+77.07	P.T. STA. = 111+93.05	P.T. STA. = 98+93.85	P.T. STA. = 107+09.98
N = 1,905,399.75	N = 1,905,485.89	N = 1,905,402.17	N = 1,905,538.34
E = 1,107,570.28	E = 1,108,868.86	E = 1,107,586.92	E = 1,108,389.96



FILE NAME = D:\END\06-5799-17 Lake St. Triple Box Culvert\CADD\Civil\Shs\DI60H4-4-shs-nT3.dgn



USER NAME = #USER#	DESIGNED - KAC	REVISED -
DRAWN - TMF	REVISED -	
CHECKED - KAC	REVISED -	
DATE -	REVISED -	

**STATE OF ILLINOIS
DEPARTMENT OF TRANSPORTATION**

ALIGNMENT, TIES AND BENCHMARKS	
SCALE: 1"=50'	SHEET NO. 1 OF 2 SHEETS

F.A.U. RTE. 3537	SECTION 3264-T	COUNTY COOK	TOTAL SHEETS 110	SHEET NO. 14
CONTRACT NO. 60H44				
ILLINOIS FED. AID PROJECT				