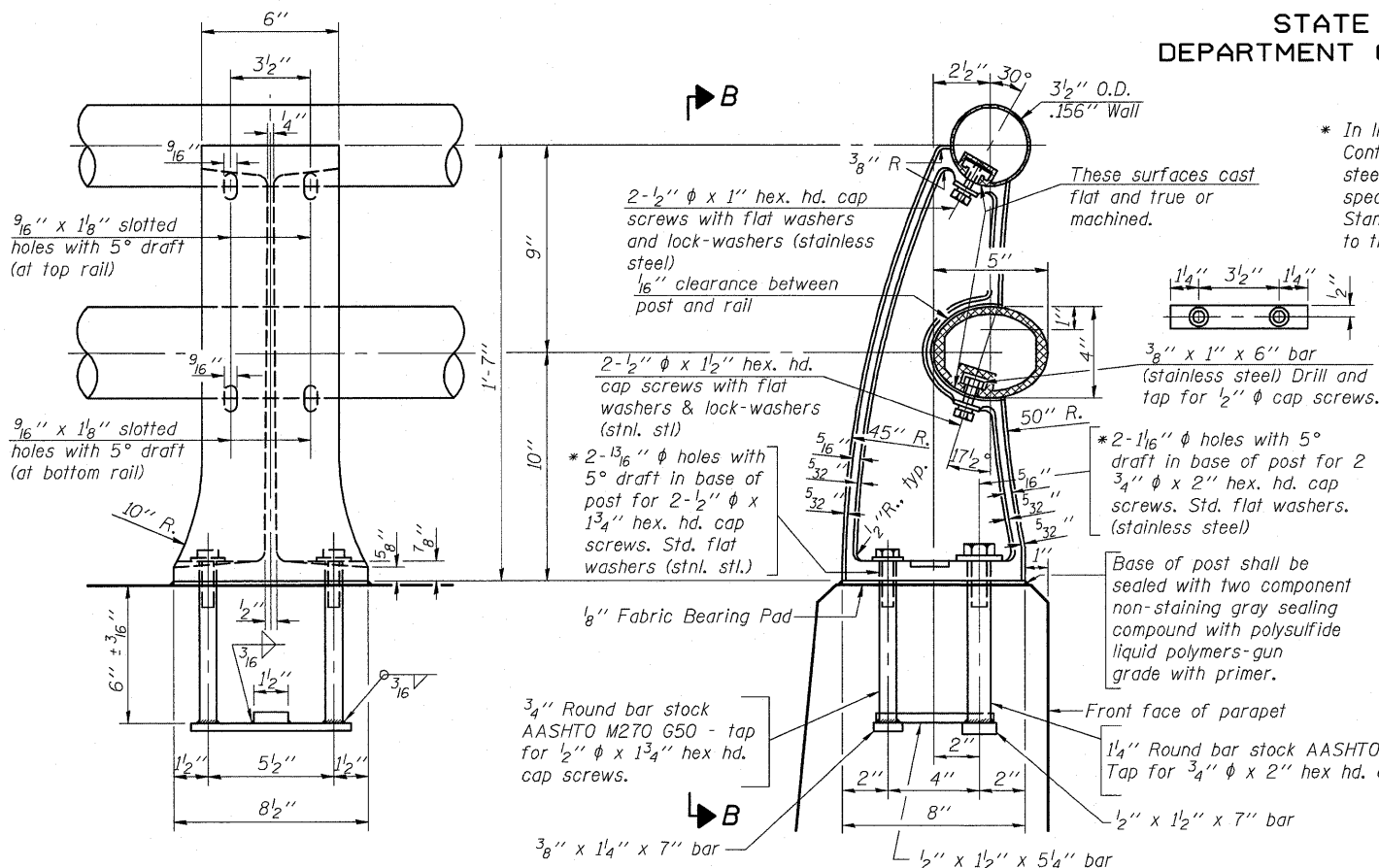


STATE OF ILLINOIS
DEPARTMENT OF TRANSPORTATION

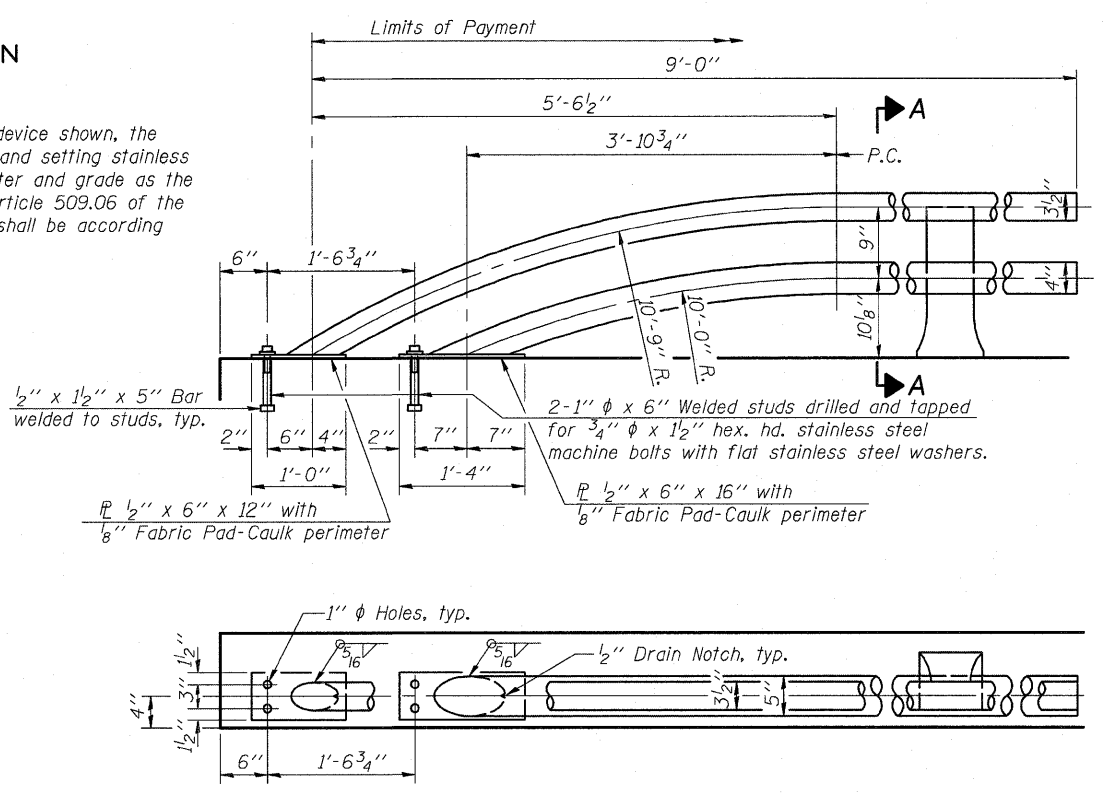


VIEW B-B

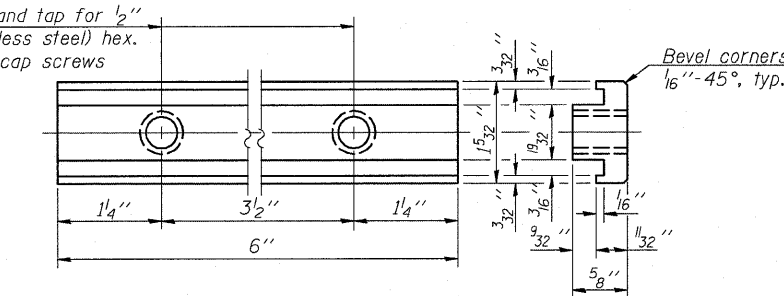
RAIL POST DETAILS

SECTION A-A

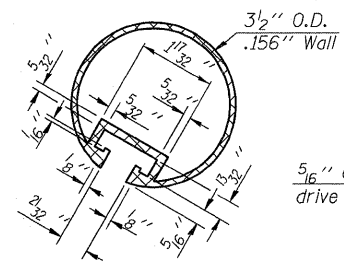
* In lieu of the cast-in-place anchor device shown, the Contractor has the option of drilling and setting stainless steel anchor rods of the same diameter and grade as the specified cap screws according to Article 509.06 of the Standard Specifications. Embedment shall be according to the manufacturer's specifications.



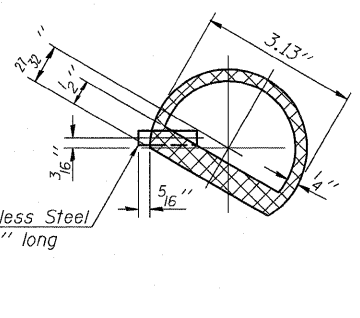
RAIL TERMINAL SECTION



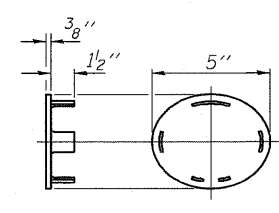
RAIL POST CLAMP BAR



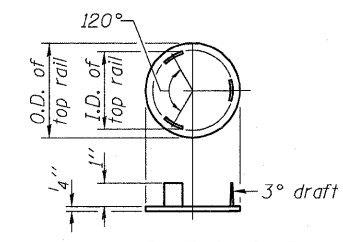
SECTION THRU TOP RAIL



SECTION THRU SPLICE

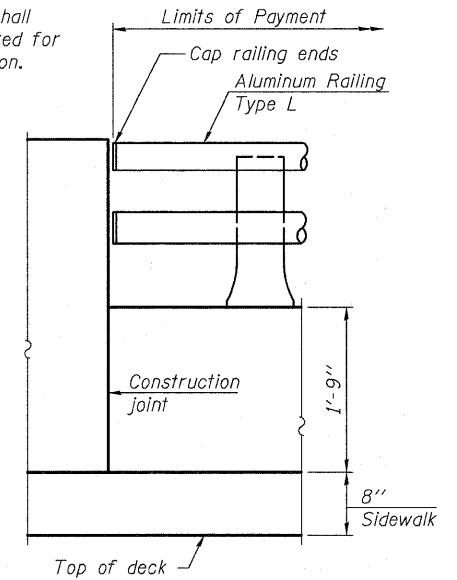


CAST END CAP
For bottom rail
DRIVE FIT TYPE

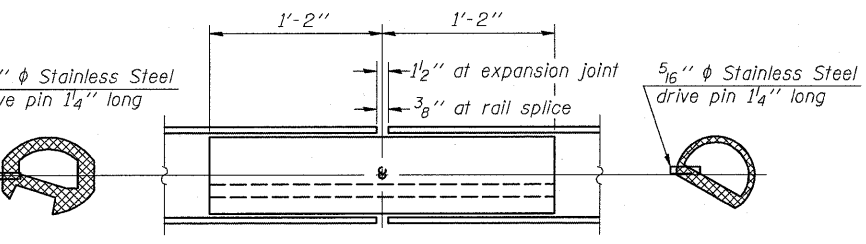


CAST END CAP
For top rail

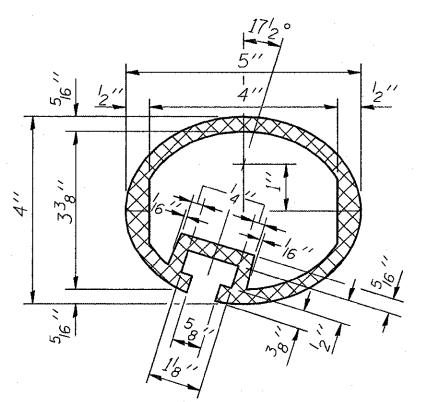
Note:
The end rail post shall be set back as required for the terminal rail section.



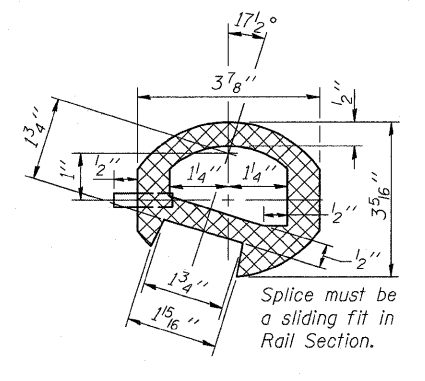
RAIL END TREATMENT FOR TYPE 5 AND 6 TERMINAL



RAIL SPLICE



SEC. THRU ELLIPTICAL RAIL SECTION



SEC. THRU SPLICE

Notes:
All Posts shall be normal to parapet.
All joints in rail shall be spliced per detail.
All exposed rail ends shall be capped per detail.
Provide 1-1/8" and 2-1/16" Aluminum Shims for 25% of the Posts. Rail elements shall be parallel to Grade-high spots will be ground and low spots shimmed.
See sheets 8 through 11 of 19 for rail post spacing.

BILL OF MATERIAL

Item	Unit	Quantity
Aluminum Railing, Type L	Foot	191.2

ALUMINUM RAILING, TYPE L
STRUCTURE NO. 016-2630

DESIGNED	MAS
CHECKED	BJM
DRAWN	JNH
CHECKED	BRT

R-20
7-1-10 (7'-0" to 10'-0" Post spacing)



Wight & Company
2500 North Frontage Road, Darien, IL 60561
630.969.7000 630.969.7979 fax
Design Firm Registration 184-000451

SHEET NO. 15 19 SHEETS	F.A.U. RTE. 3537	SECTION 3264-T	COUNTY COOK	TOTAL SHEETS 110	SHEET NO. 59
	CONTRACT NO. 60H44				
ILLINOIS FED. AID PROJECT					