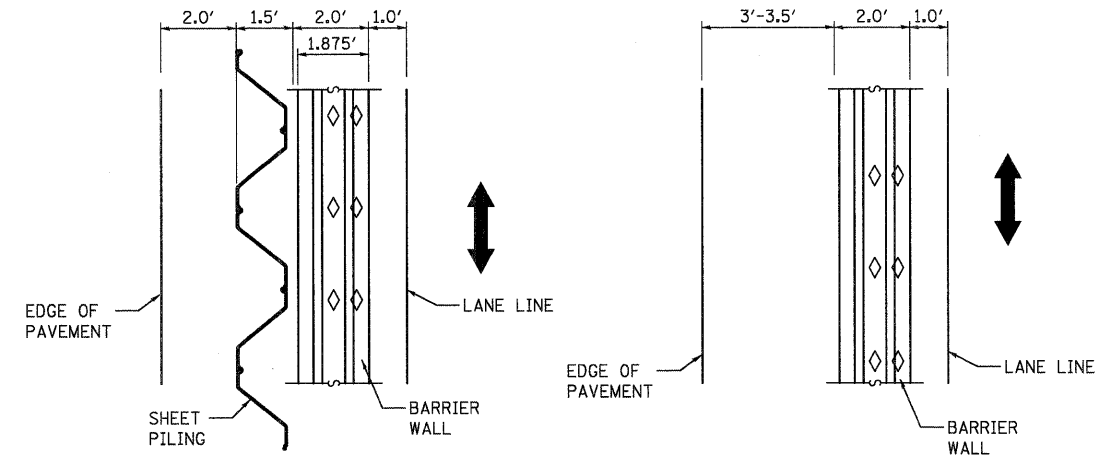


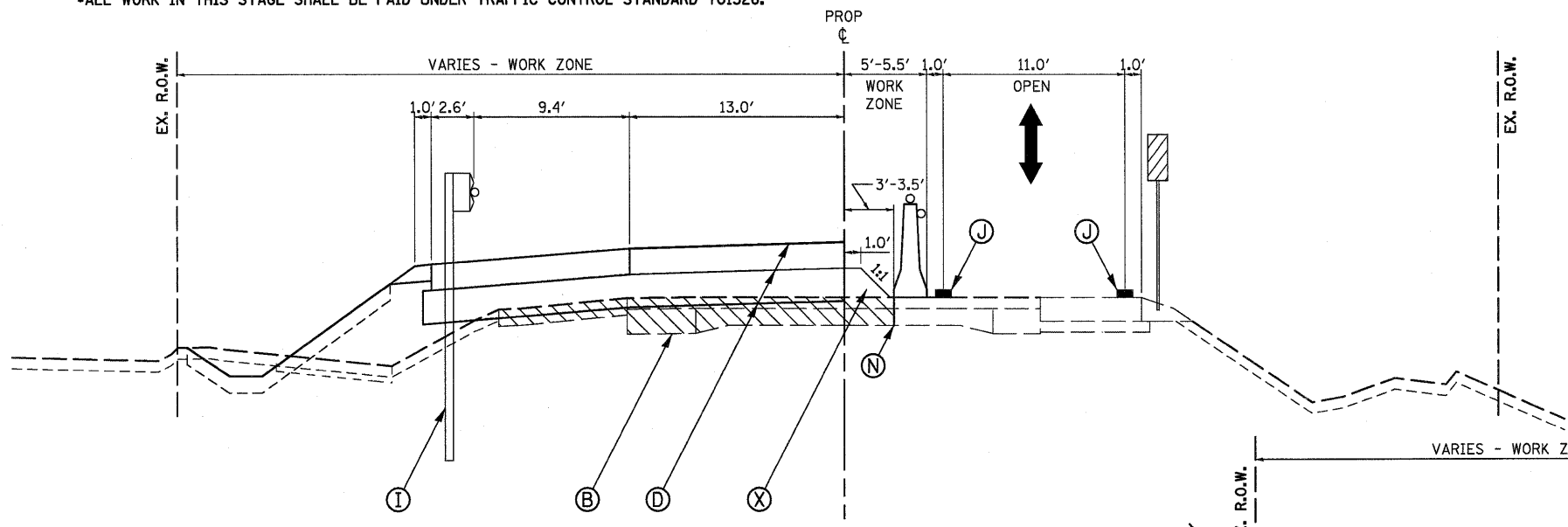
STAGE 1 - MAJOR WORK ITEMS

- PLACE STAGE 1 LANE SHIFT AND TRAFFIC CONTROL PLAN (SEE STAGE 1 MOT PLAN).
- PLACE TEMPORARY CONCRETE BARRIER WALL AND ATTENUATORS.
- PLACE TEMPORARY BRIDGE SIGNALS AND ROADWAY LIGHTING.
- CONSTRUCT TEMPORARY SHEET PILING WALL.
- REMOVE AND REPLACE BRIDGE STRUCTURE AND APPROACH SLABS LEFT OF CENTERLINE.
- REMOVE ROADWAY PAVEMENT STA. 431+41.60 TO STA. 436+63.06 AND STA. 445+09.08 TO STA. 449+53.82.
- COMPLETE PAVEMENT BREAKING STA.436+06.06 TO STA. 440+51.27 AND STA 442+20.00 TO STA. 445+09.08.
- CONSTRUCT EMBANKMENTS, SUBGRADES AND AGGREGATE BASE COURSES STA. 431+41.60 TO STA. 445+09.08.
- CONSTRUCT PCC CONCRETE PAVEMENT, CURB AND GUTTERS AND SHOULDERS STA. 431+41.60 TO STA. 445+09.08.
- CONSTRUCT THE STEEL PLATE BEAM GUARD RAIL AND END TREATMENTS.
- PLACE TOPSOIL, SEEDING, BLANKET AND PERMENT EROSION CONTROL MEASURES LEFT OF CENTERLINE.
- ALL WORK IN THIS STAGE SHALL BE PAID UNDER TRAFFIC CONTROL STANDARD 701326.

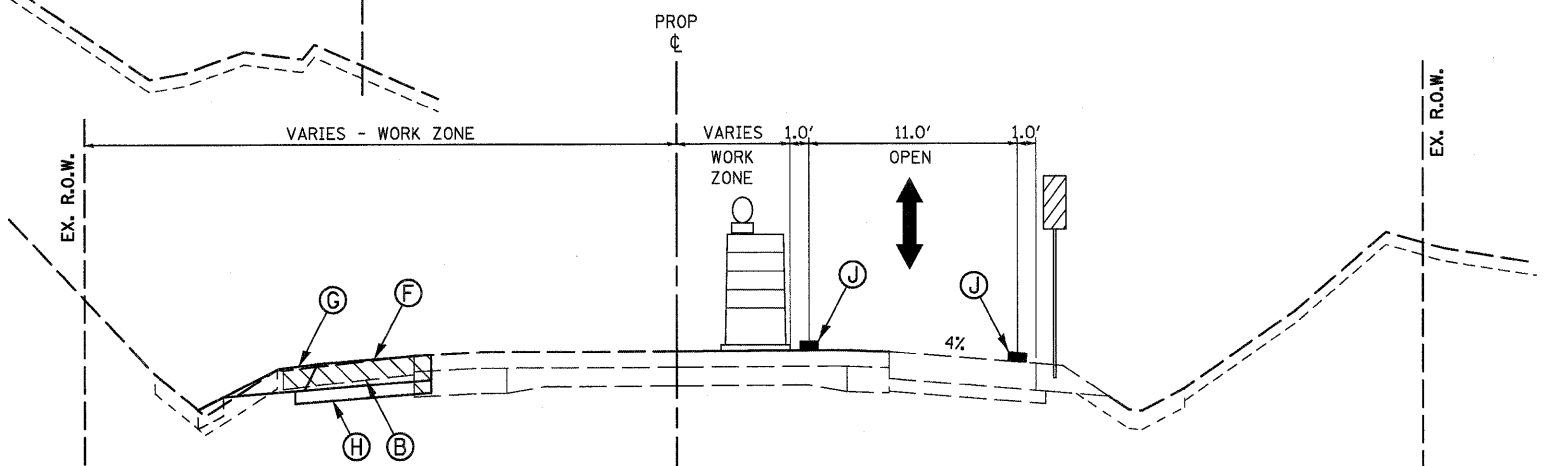


STAGE 1 TRAFFIC CONTROL WITH TEMPORARY SHEET PILING
 STA. 437+87.0 TO STA. 440+86.0
 STA. 442+83.0 TO STA. 444+75.0

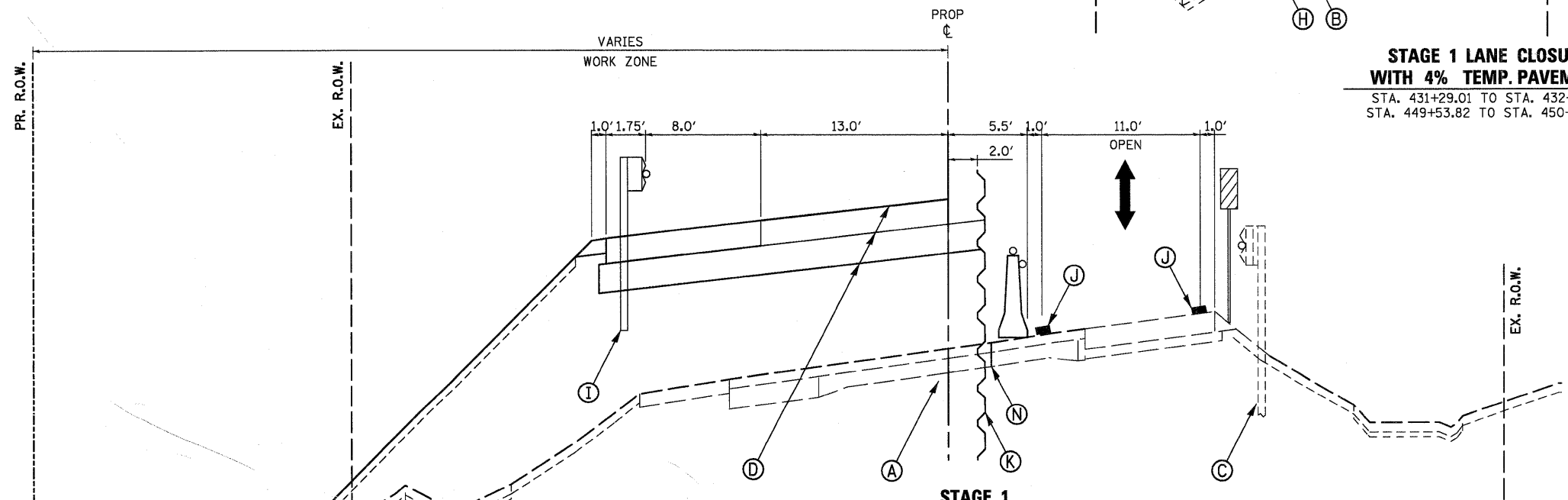
STAGE 1 TRAFFIC CONTROL WITHOUT TEMPORARY SHEET PILING
 STA. 432+40.0 TO STA. 437+87.0
 STA. 444+75.0 TO STA. 449+30.0



STAGE 1 LANE CLOSURE
 STA. 432+40.1 TO STA. 437+87.0
 STA. 444+75.0 TO STA. 449+30.1



STAGE 1 LANE CLOSURE WITH 4% TEMP. PAVEMENT
 STA. 431+29.01 TO STA. 432+31.18
 STA. 449+53.82 TO STA. 450+50.00



STAGE 1 LANE CLOSURE - EASTBOUND
 STA. 437+87 TO STA. 440+86
 BRIDGE OMISSION - SEE STRUCTURAL PLANS FOR SHEETING AT BRIDGE
 STA. 442+83 TO STA. 444+75

LEGEND

- (A) EXIST. PAVEMENT STRUCTURE
- (B) EXIST. PAVEMENT AND SHOULDER STRUCTURE - TO BE REMOVED
- (C) EXIST. GUARDRAIL W/PROP. GUARDRAIL MARKERS
- (D) PROP. PAVEMENT STRUCTURE
- (E) PROP. HMA SURFACE COURSE
- (F) PROP. HMA SHOULDER/AGGREGATE BASE COURSE
- (G) PROP. AGGREGATE SHOULDER
- (H) PROP. AGGREGATE SUB-BASE
- (I) PROP. STEEL PLATE BEAM GUARDRAIL, TYPE A W/GUARDRAIL MKRS.
- (J) 8-1/2", TEMPORARY PAVEMENT W/4" AGGREGATE BASE COURSE
 1/2" - HMA SURFACE COURSE, MIX "D", N50
 7" - HMA BINDER COURSE, IL-19.0 (2 LIFTS)
 (SEE HMA MIXTURE REQUIREMENTS, SHT. 7)
- (K) TEMPORARY SHEET PILING
- (L) AGGREGATE WEDGE SHOULDER, TYPE B
- (M) TEMPORARY PAVEMENT MARKING LINE
- (N) SAW CUT - FULL DEPTH
- (O) SHORT-TERM PAVEMENT MARKINGS
- (P) HMA SURFACE REMOVAL, 2"

FILE NAME = P:\CBBEL\WEST\Projects\28091\B-9147_IL173\CV11\Bgn\Sh\160129_sht-mot-ypc2.dgn

WILLS BURKE KELSEY ASSOCIATES LTD.
 116 West Main Street, Suite 201
 St. Charles, Illinois 60174
 (630) 443-7755

USER NAME = *USER*	DESIGNED - SBP/KMA	REVISED -
PLOT SCALE =	DRAWN - AH	REVISED -
PLOT DATE = 1/5/2011	CHECKED - PJF	REVISED -
	DATE - 12/14/10	REVISED -

**STATE OF ILLINOIS
 DEPARTMENT OF TRANSPORTATION**

**MAINTENANCE OF TRAFFIC
 STAGE 1 TYPICAL SECTIONS**

SCALE: SHEET NO. 19 OF 106 SHEETS STA. TO STA.

F.A. RTE. 303	SECTION 132 B-2	COUNTY McHENRY	TOTAL SHEETS 106	SHEET NO. 19
FED. ROAD DIST. NO. ILLINOIS FED. AID PROJECT			CONTRACT NO.60129	