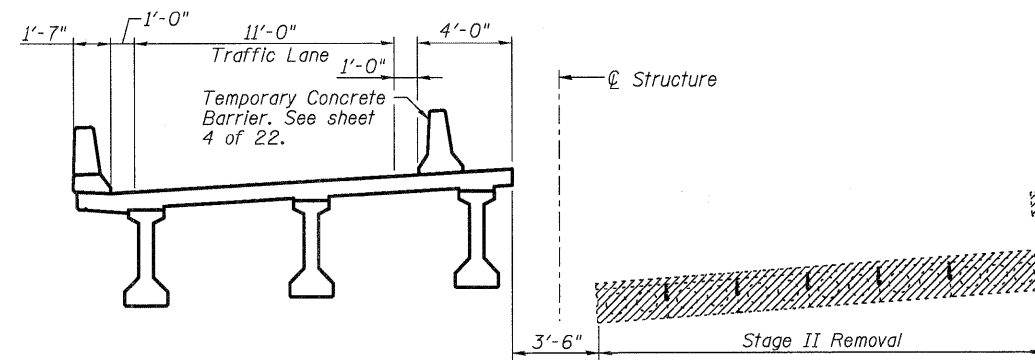
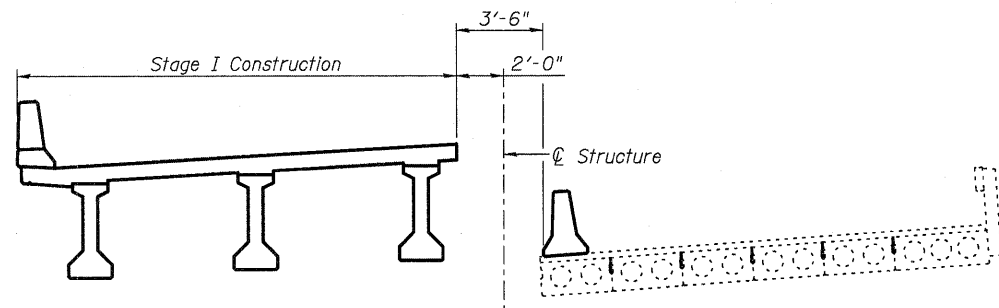


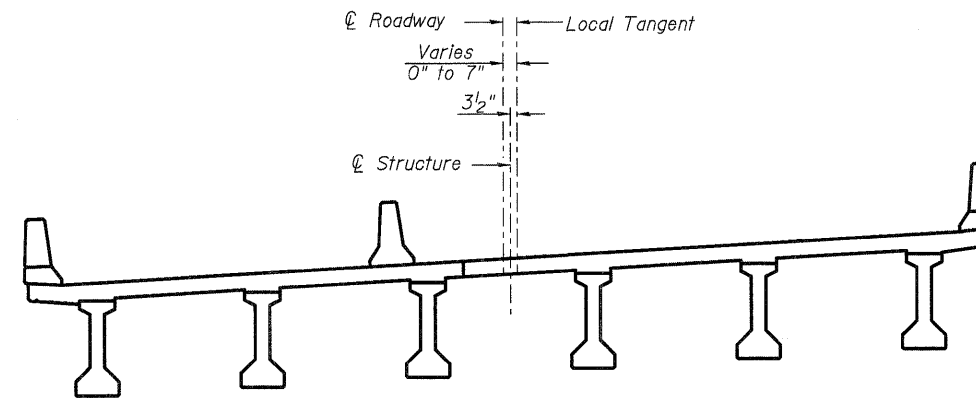
**STAGE I REMOVAL & TRAFFIC**



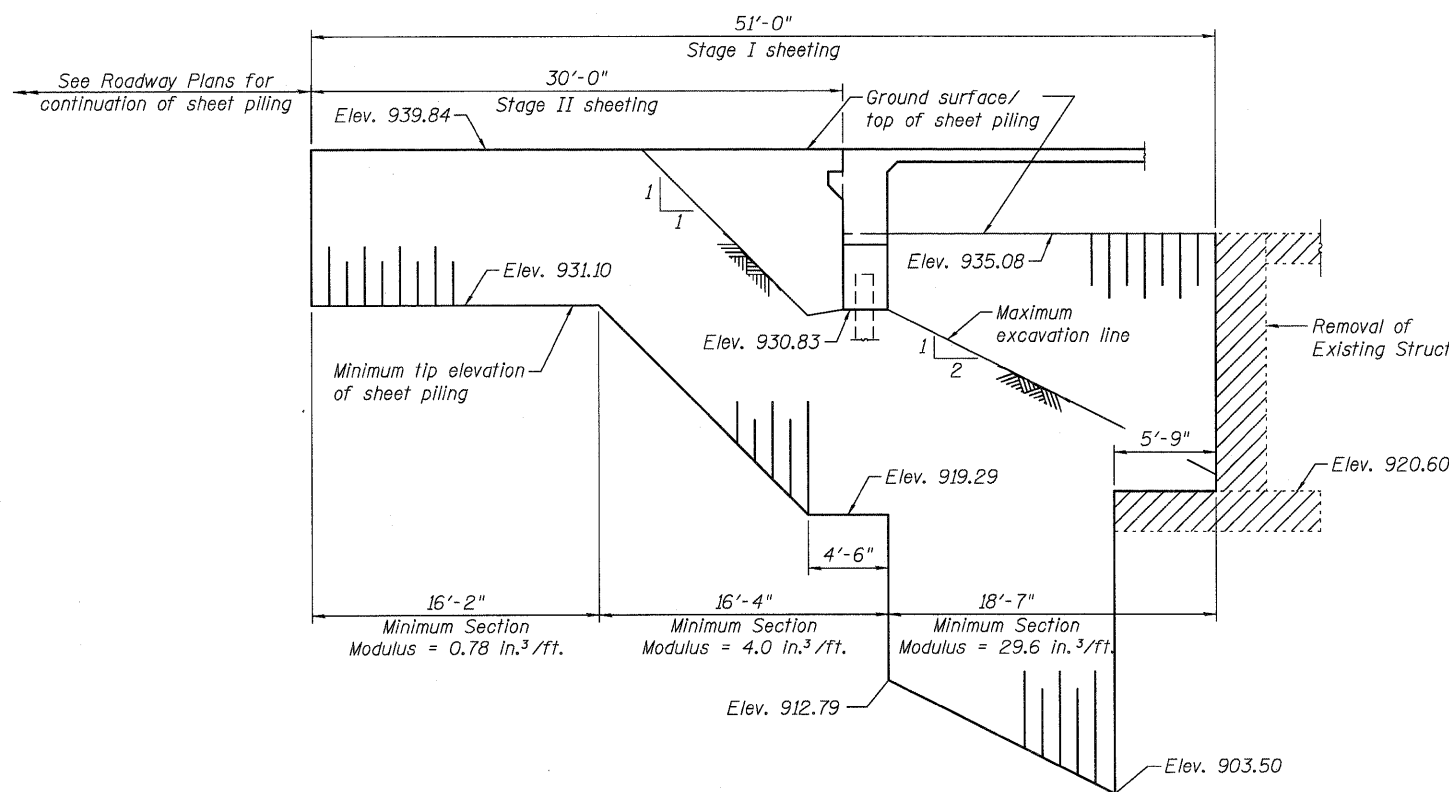
**STAGE II REMOVAL & TRAFFIC**



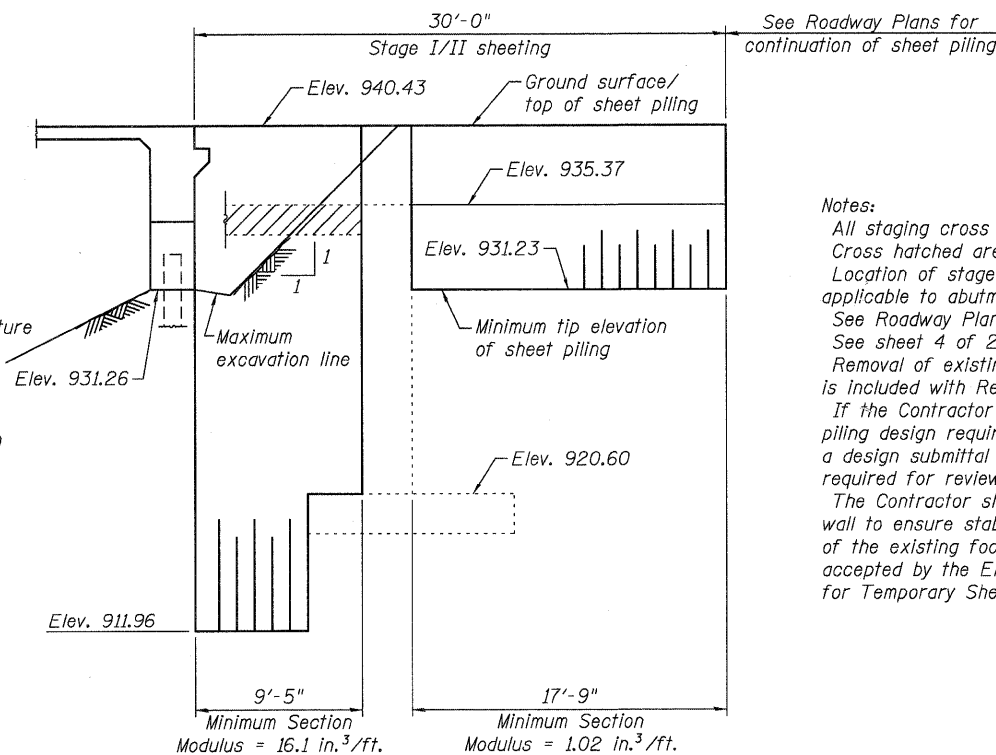
**STAGE I CONSTRUCTION**



**STAGE II CONSTRUCTION**



**TEMPORARY SHEET PILING AT WEST ABUT.**



**TEMPORARY SHEET PILING AT EAST ABUT.**

**Notes:**  
 All staging cross sections are looking East.  
 Cross hatched area indicate removal of existing structure.  
 Location of stage removal & construction lines are also applicable to abutments.  
 See Roadway Plans for quantity of Temporary Concrete Barrier.  
 See sheet 4 of 22 for details of Temporary Concrete Barrier.  
 Removal of existing bridge rail and bituminous wearing surface is included with Removal of Existing Structures.  
 If the Contractor chooses to alter the temporary cantilever sheet piling design requirements shown on the plans, a design submittal including plan details and calculations will be required for review and acceptance by the Engineer.  
 The Contractor shall connect the first sheet to the existing abutment wall to ensure stability of the sheets driven to the top of the existing footing. This connection shall be reviewed and accepted by the Engineer and included in the cost for Temporary Sheet Piling.

FILE NAME = P:\CBBEL WEST Projects\2009\09-01\7. ILL123\Structural\Draw\0560091-60123-003-StageConstruction.dgn



USER NAME =	DESIGNED - MLH	REVISED -
FILE NAME =	CHECKED - AEU	REVISED -
PLOT SCALE =	DRAWN - MLH	REVISED -
PLOT DATE =	CHECKED - AEU	REVISED -

**STATE OF ILLINOIS**  
**DEPARTMENT OF TRANSPORTATION**

**STAGE CONSTRUCTION DETAILS**  
**STRUCTURE NO. 056-0091**

SHEET NO. 3 OF 22 SHEETS

F.A.P. RTE.	SECTION	COUNTY	TOTAL SHEETS	SHEET NO.
303	132B-2	McHENRY	106	48
CONTRACT NO. 60129				
ILLINOIS FED. AID PROJECT				