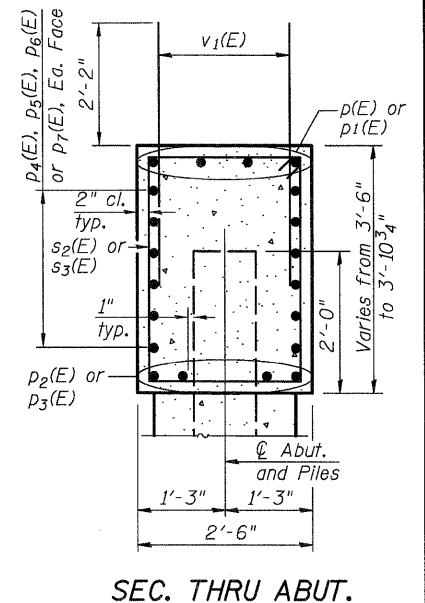
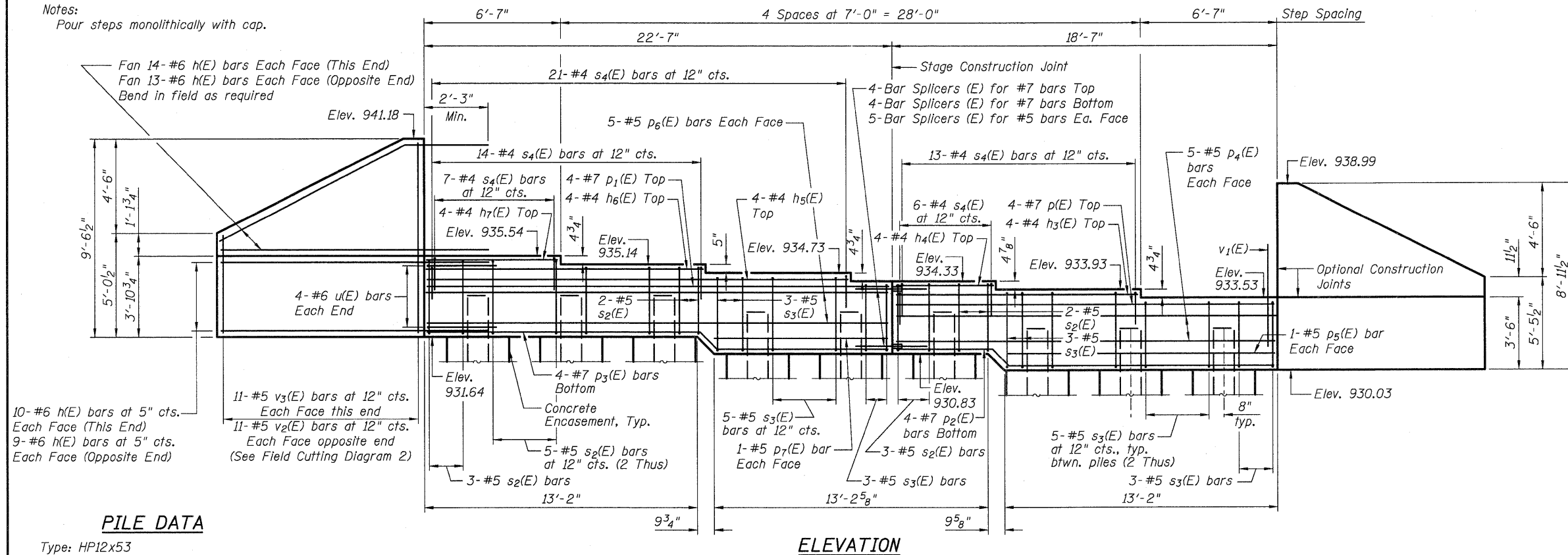


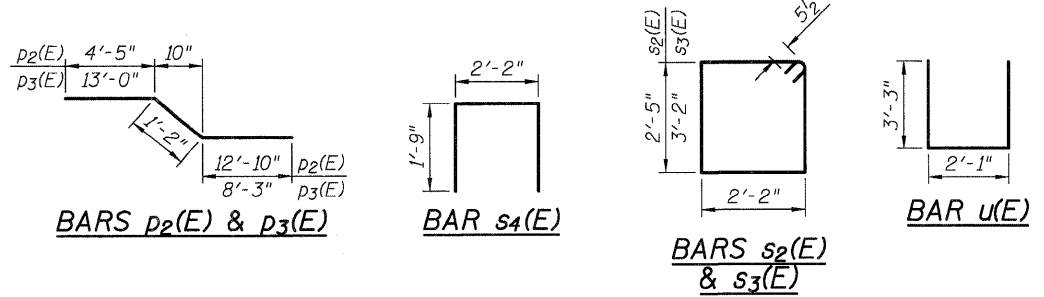
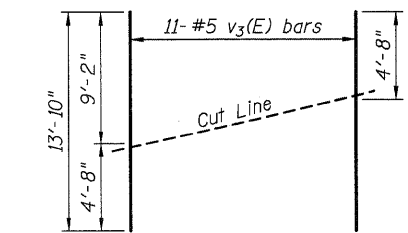
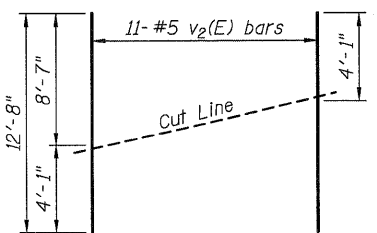
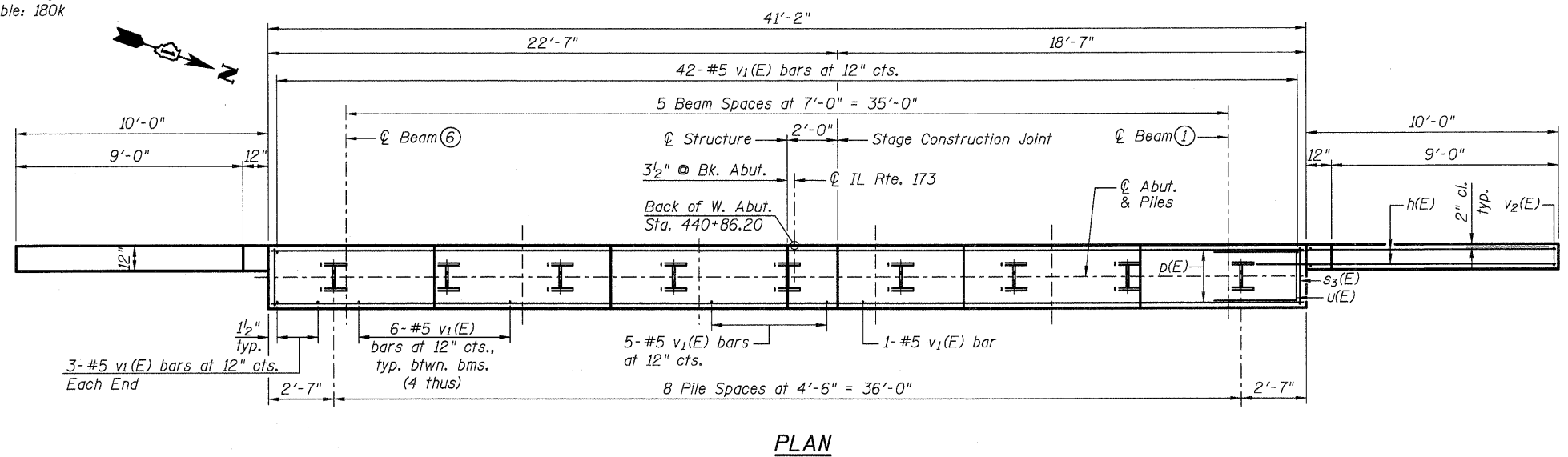
Notes:
Pour steps monolithically with cap.



PILE DATA
Type: HP12x53
Maximum Nominal Required Bearing: 360k
Factored Resistance Available: 180k
Est. Length: 54'
No. Production Piles: 8
No. Test Piles: 1

BILL OF MATERIAL

Bar	No.	Size	Length	Shape
h(E)	92	#6	13'-4"	—
h3(E)	4	#4	11'-8"	—
h4(E)	4	#4	4'-8"	—
h5(E)	4	#4	20'-2"	—
h6(E)	4	#4	13'-3"	—
h7(E)	4	#4	6'-3"	—
p(E)	4	#7	18'-3"	—
p1(E)	4	#7	22'-3"	—
p2(E)	4	#7	18'-5"	—
p3(E)	4	#7	22'-5"	—
p4(E)	10	#5	18'-3"	—
p5(E)	2	#5	12'-10"	—
p6(E)	10	#5	22'-3"	—
p7(E)	2	#5	8'-3"	—
s2(E)	20	#5	10'-1"	□
s3(E)	27	#5	11'-7"	□
s4(E)	61	#4	5'-8"	□
u(E)	8	#6	8'-7"	□
v1(E)	78	#5	4'-4"	—
v2(E)	11	#5	12'-8"	—
v3(E)	11	#5	13'-10"	—
Structure Excavation	Cu. Yd.		63	
Concrete Structures	Cu. Yd.		19.4	
Reinforcement Bars, Epoxy Coated	Pound		4,650	
Furnishing Steel Piles, HP12x53	Foot		432	
Test Pile Steel, HP12x53	Each		1	
Driving Piles	Foot		432	
Concrete Encasement	Cu. Yd.		3.1	
Porous Granular Embankment, Special	Cu. Yd.		102	



FIELD CUTTING DIAGRAM 1
Order v2(E) full length. Cut as shown and use remainder of bars in opposite face.

FIELD CUTTING DIAGRAM 2
Order v3(E) full length. Cut as shown and use remainder of bars in opposite face.

For details of Bar Splicers, see sheet 20 of 22.
For details of piles and Concrete Encasement, see sheet 19 of 22.



USER NAME =	DESIGNED - LAS	REVISED -
FILE NAME =	CHECKED - DAZ	REVISED -
PLOT SCALE =	DRAWN - SAW	REVISED -
PLOT DATE =	CHECKED - LAS	REVISED -

STATE OF ILLINOIS
DEPARTMENT OF TRANSPORTATION

WEST ABUTMENT
STRUCTURE NO. 056-0091
SHEET NO. 17 OF 22 SHEETS

F.A.P. RTE.	SECTION	COUNTY	TOTAL SHEETS	SHEET NO.
303	132 B-2	McHENRY	106	62
CONTRACT NO. 60129				

ILLINOIS FED. AID PROJECT