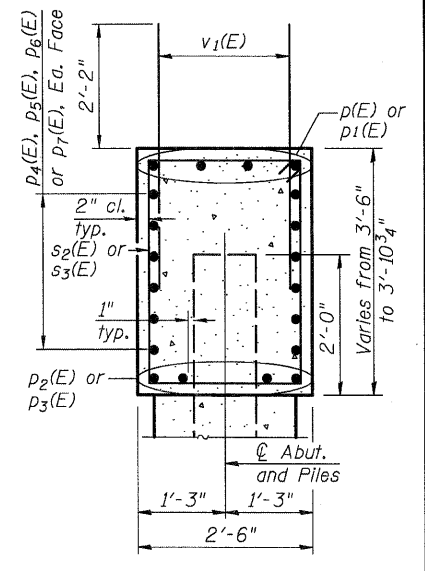
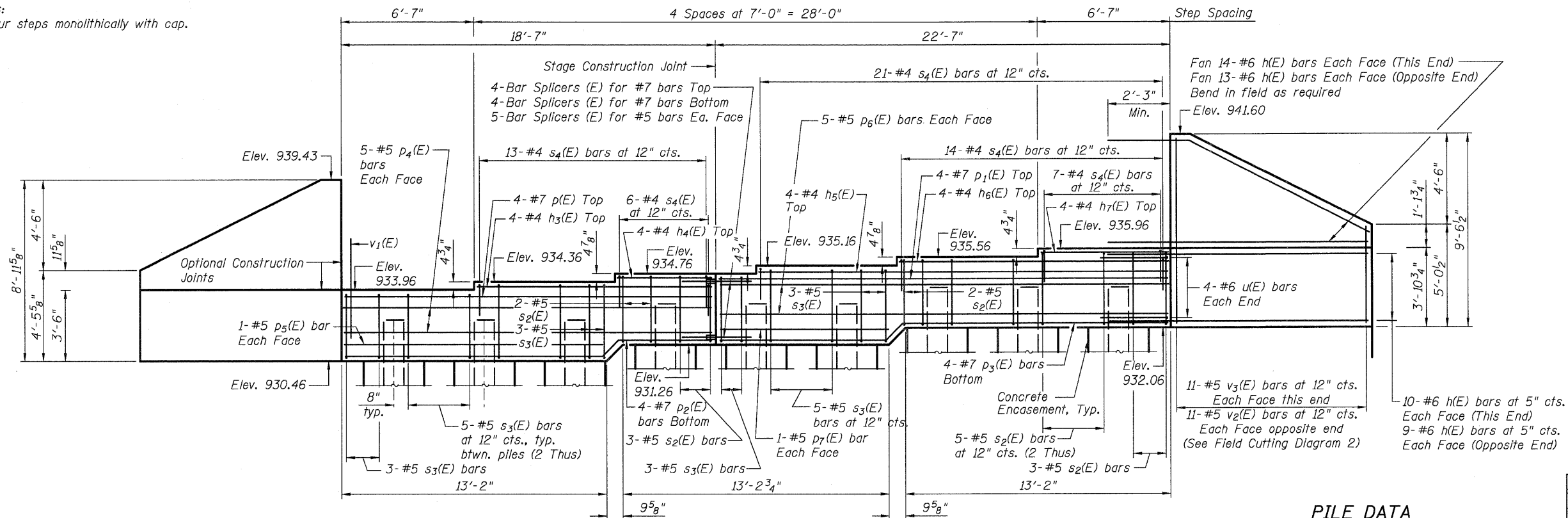
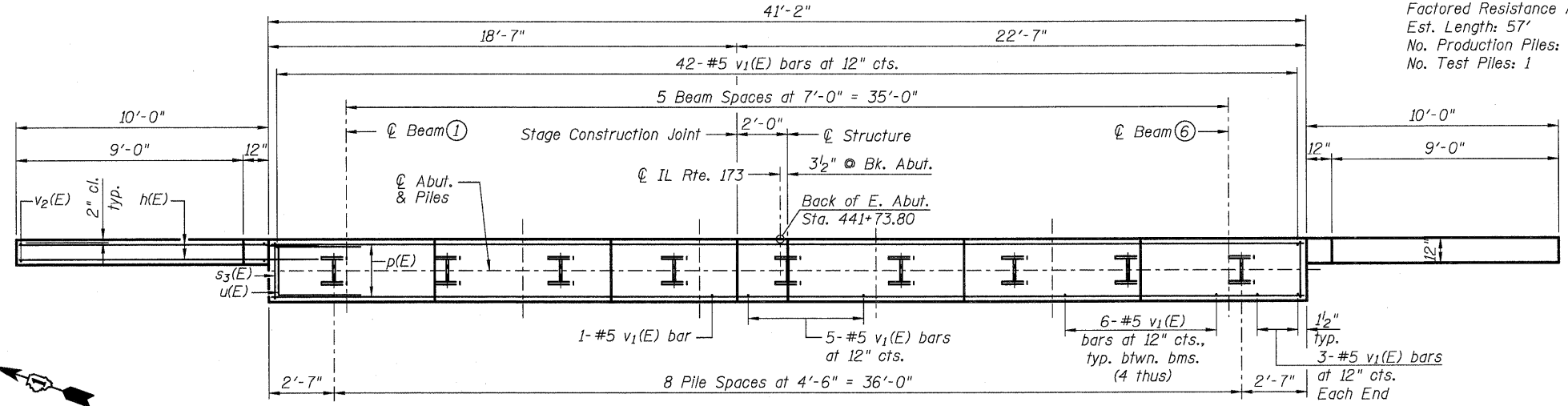


Notes:
Pour steps monolithically with cap.



ELEVATION



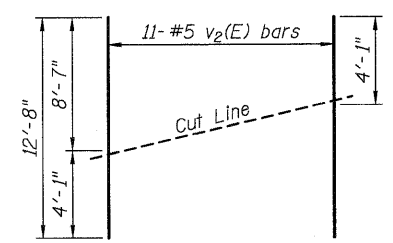
PLAN

PILE DATA

Type: HP12x53
Maximum Nominal Required Bearing: 360K
Factored Resistance Available: 180K
Est. Length: 57'
No. Production Piles: 8
No. Test Piles: 1

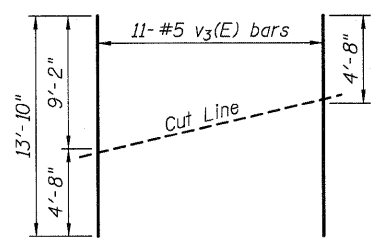
BILL OF MATERIAL

Bar	No.	Size	Length	Shape
h(E)	92	#6	13'-4"	
h3(E)	4	#4	11'-8"	
h4(E)	4	#4	4'-8"	
h5(E)	4	#4	20'-2"	
h6(E)	4	#4	13'-3"	
h7(E)	4	#4	6'-3"	
p(E)	4	#7	18'-3"	
p1(E)	4	#7	22'-3"	
p2(E)	4	#7	18'-5"	
p3(E)	4	#7	22'-5"	
p4(E)	10	#5	18'-3"	
p5(E)	2	#5	12'-10"	
p6(E)	10	#5	22'-3"	
p7(E)	2	#5	8'-3"	
s2(E)	20	#5	10'-1"	
s3(E)	27	#5	11'-7"	
s4(E)	61	#4	5'-8"	
u(E)	8	#6	8'-7"	
v1(E)	78	#5	4'-4"	
v2(E)	11	#5	12'-8"	
v3(E)	11	#5	13'-10"	
Structure Excavation		Cu. Yd.	59	
Concrete Structures		Cu. Yd.	19.4	
Reinforcement Bars, Epoxy Coated		Pound	4,650	
Furnishing Steel Piles, HP12x53		Foot	456	
Test Pile Steel, HP12x53		Each	1	
Driving Piles		Foot	456	
Concrete Encasement		Cu. Yd.	3.1	
Porous Granular Embankment, Special		Cu. Yd.	100	



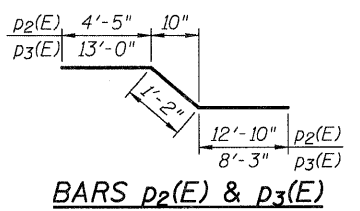
FIELD CUTTING DIAGRAM 1

Order v2(E) full length. Cut as shown and use remainder of bars in opposite face.

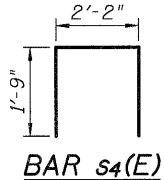


FIELD CUTTING DIAGRAM 2

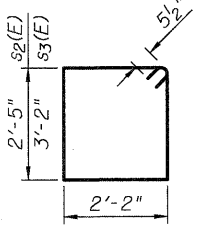
Order v3(E) full length. Cut as shown and use remainder of bars in opposite face.



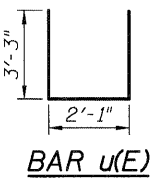
BARS p2(E) & p3(E)



BAR s4(E)



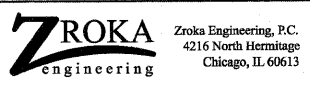
BARS s2(E) & s3(E)



BAR u(E)

For details of Bar Splicers, see sheet 20 of 22.
For details of piles and Concrete Encasement, see sheet 19 of 22.

FILE NAME = PACBBEL_MEST_Projects\2009\05-0147_IL173\Structural\Drawings\05660951-60129-018-Abut.dgn



USER NAME =	DESIGNED - LAS	REVISED -
FILE NAME =	CHECKED - DAZ	REVISED -
PLOT SCALE =	DRAWN - SAW	REVISED -
PLOT DATE =	CHECKED - LAS	REVISED -

**STATE OF ILLINOIS
DEPARTMENT OF TRANSPORTATION**

**EAST ABUTMENT
STRUCTURE NO. 056-0091**
SHEET NO. 18 OF 22 SHEETS

F.A.P. RTE.	SECTION	COUNTY	TOTAL SHEETS	SHEET NO.
303	132 B-2	McHENRY	106	63
CONTRACT NO. 60129			ILLINOIS FED. AID PROJECT	