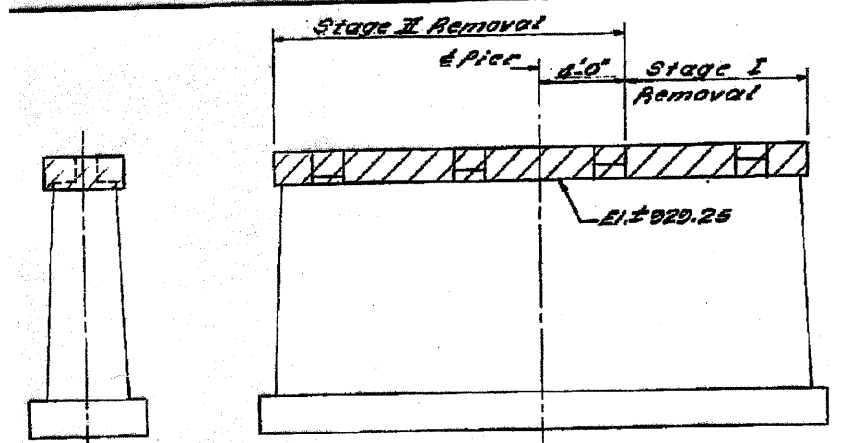


STATE OF ILLINOIS
DEPARTMENT OF TRANSPORTATION

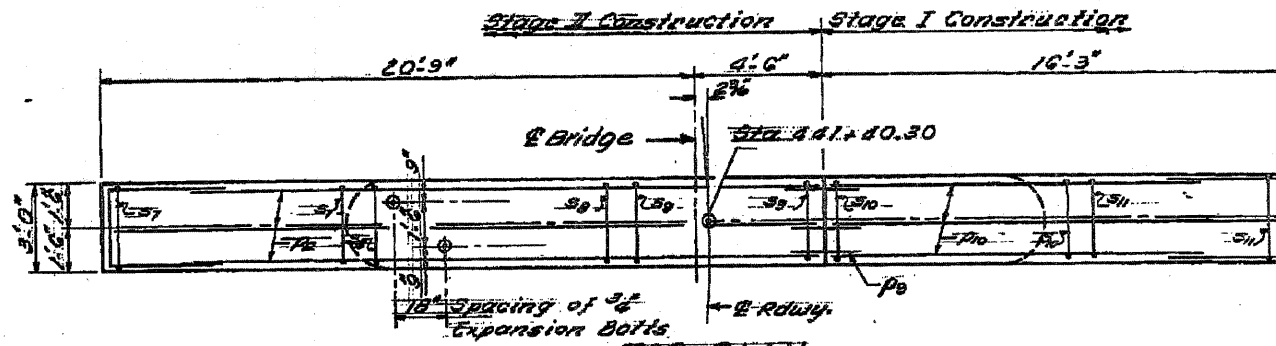
DATE	DESIGNED	CHECKED	TOTAL SHEETS	SHEET NO.
12/14/10	P36	P36	106	72
PROJECT: McHENRY				



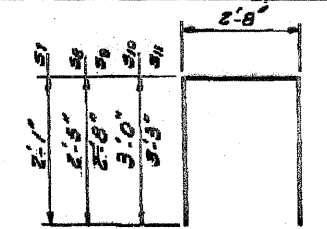
END VIEW

ELEVATION

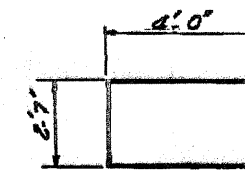
Existing Pier (Hatched area indicates concrete removal)



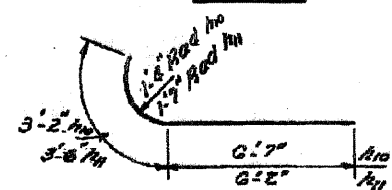
TOP PLAN



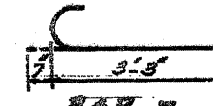
BAR S thru S



BAR U



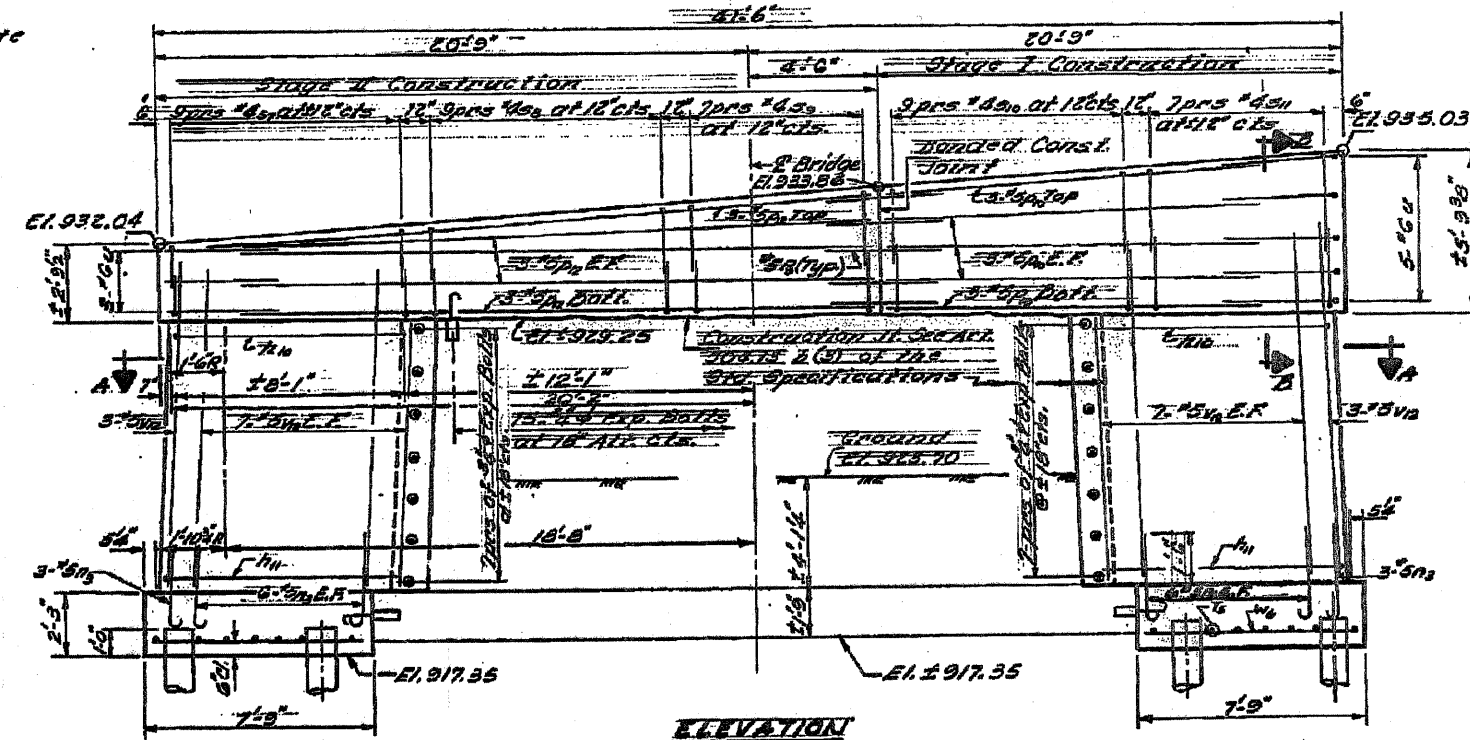
BAR K & H



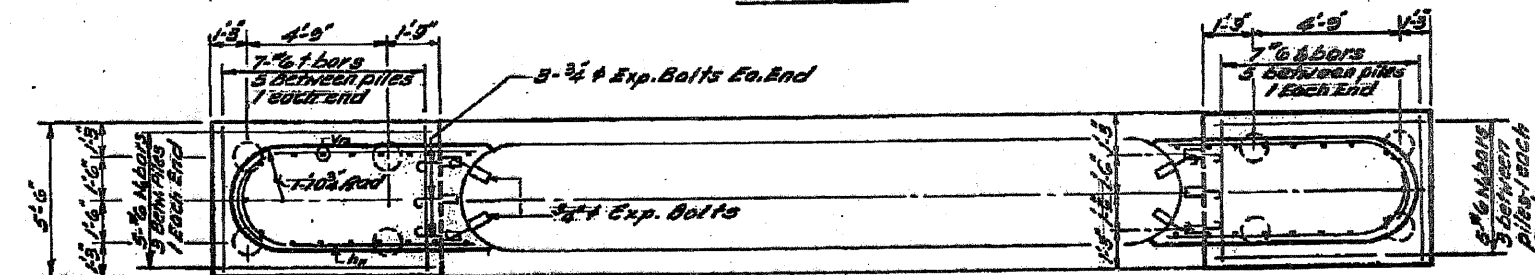
BAR P & Q

BILL OF MATERIAL

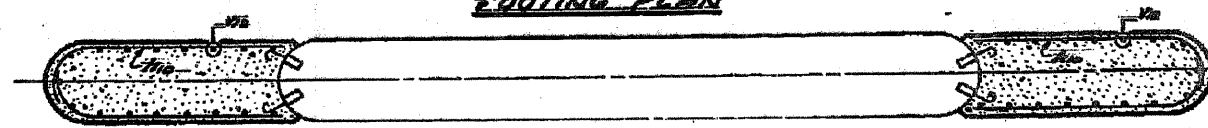
Bar	No	Size	Length	Shape
A10	10	#8	9'-5"	U
A11	20	#8	9'-5"	U
B1	30	#5	3'-6"	U
B2	12	#5	4'-0"	U
B3	12	#5	10'-5"	U
B4	12	#5	11'-0"	U
S1	10	#8	6'-0"	U
S2	10	#8	7'-0"	U
S3	14	#8	6'-0"	U
S4	10	#8	6'-0"	U
S5	14	#8	9'-0"	U
U	14	#6	5'-3"	U
W	8	#6	10'-7"	U
V1	34	#5	11'-0"	U
V2	10	#6	7'-0"	U
Reinforcement Bars				140
Forms & Concrete				100
Expansion Bolts				100
Concrete Normal				100
Concrete Piles				140
Test Piles Concrete				100



ELEVATION

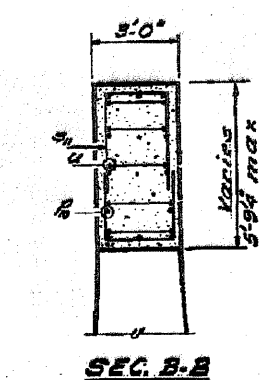


FOOTING PLAN

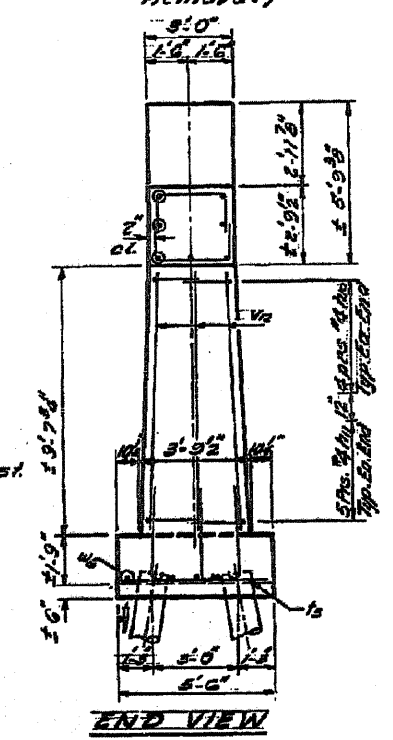


SEC. A-A

Note
Expansion bolts shall be anchored in sound concrete
All exposed edges shall have steel chawfers
except as noted.



SEC. B-B



END VIEW

* Bars shall conform to the requirements of ASTM A-615 or A-617, except the min. yield strength shall not be less than 33000 psi nor more than 48000 psi

PILE DATA

Type: Concrete
Capacity: 30 Ton
Tot. Lgth: 20 Ft.
No. Req'd: 7+1 Test Pile

DESIGNED	P36	5. 6.3
CHECKED	DAR	P36
DRAWN	JK	
CHECKED	DAR	P36

FILE NAME = F:\CBBEL WEST Projects\2009\09-0147_IL173\Civil\Dgn\Sheet\0169129-147-01.dgn

EXISTING STRUCTURE PLANS - FOR REFERENCE ONLY