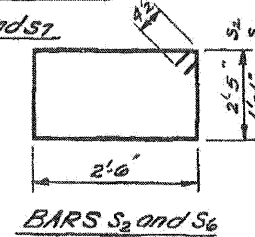
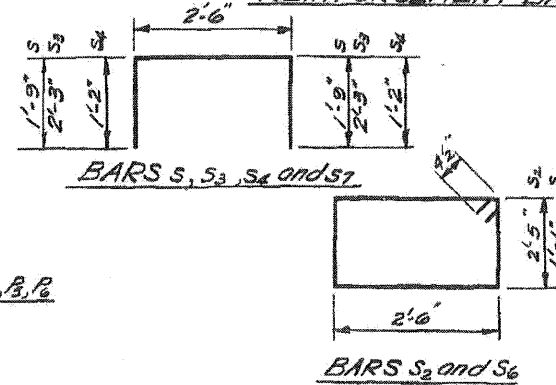
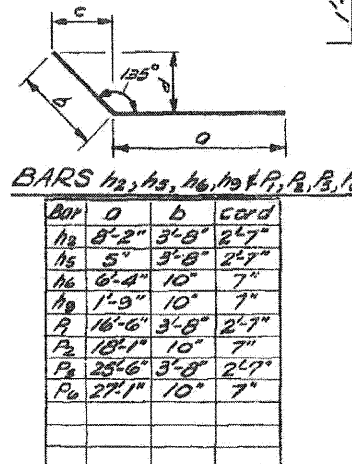
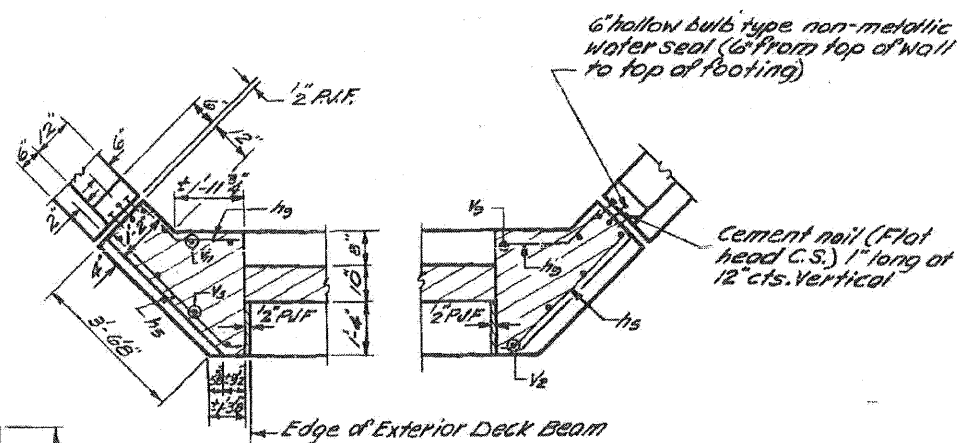
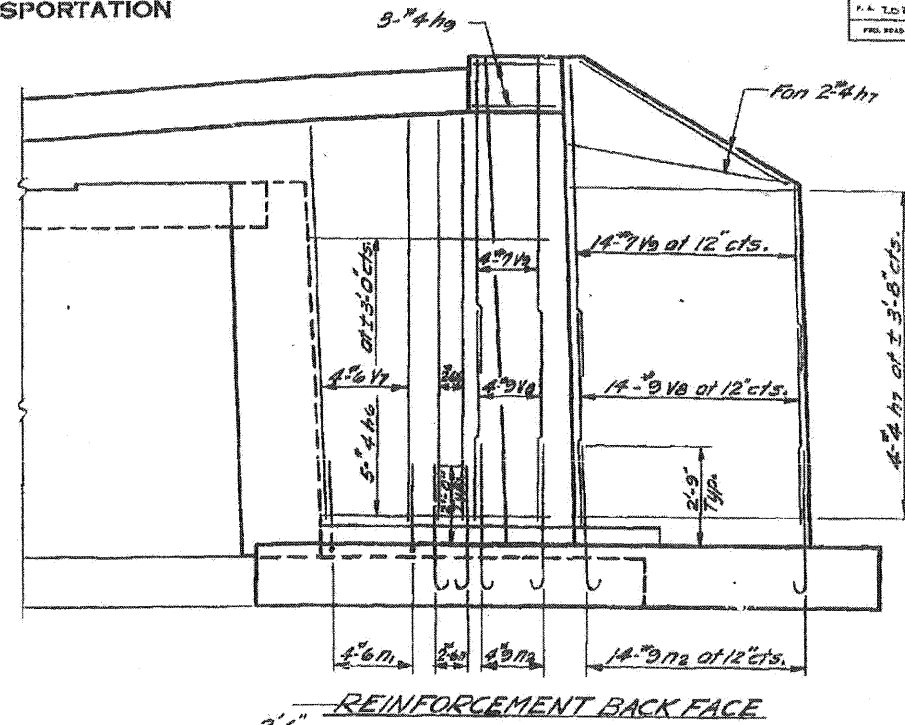
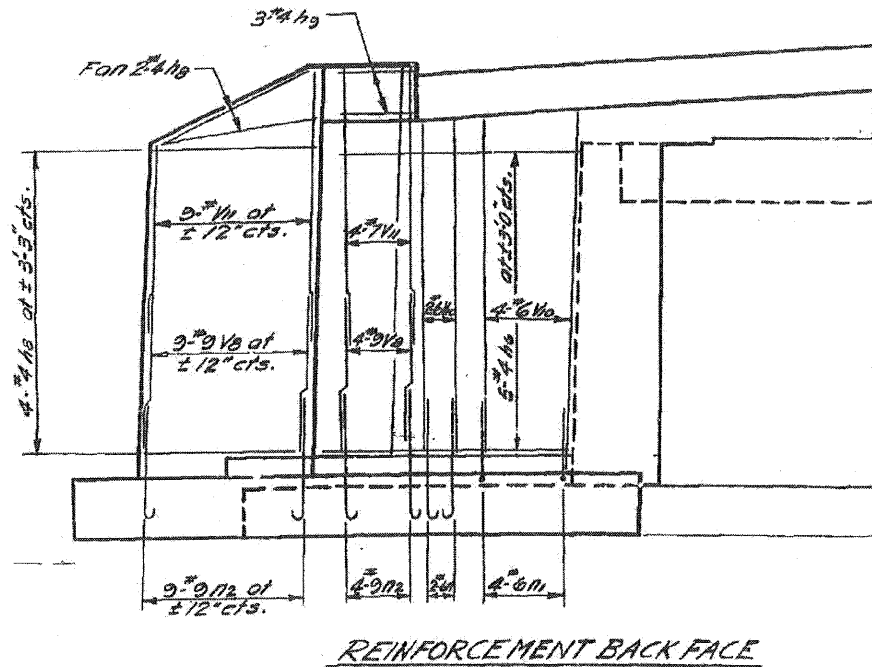


STATE OF ILLINOIS
DEPARTMENT OF TRANSPORTATION

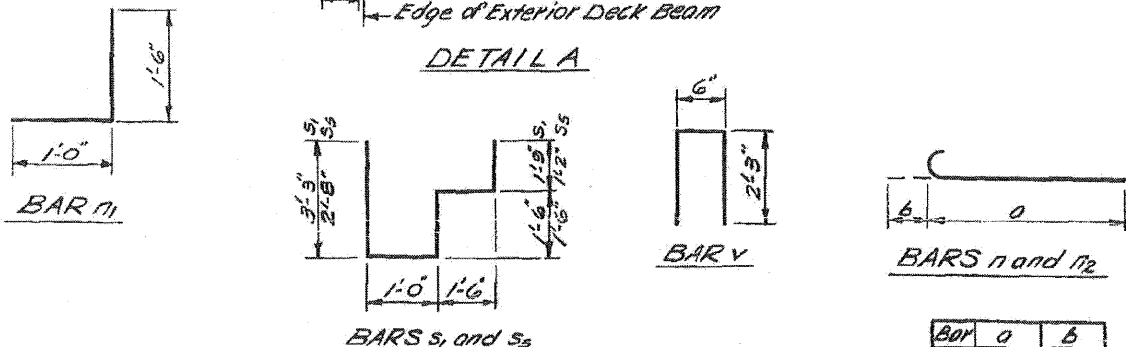
ROUTE NO.	SECTION	COUNTY	TOTAL SHEETS	SHEET NO.
132 W.	RS-1	McHENRY	117	11
SHEET NO. 11 14 SHEETS				



BILL OF MATERIAL - ONE ABUTMENT

Bar No.	Size	Length	Shape	Bar No.	Size	Length	Shape
1	4"	18'-9"	U	1	16"	7'-7"	U
11	4"	24'-9"	U	11	16"	5'	7'-7"
12	23"	11'-10"	U	12	32"	10'-3"	U
13	17"	12'-9"	U	13	14"	5'-9"	U
14	14"	8'-3"	U	14	44"	5'-0"	U
15	6"	4'-1"	U	15	43"	5'-0"	U
16	10"	6'-11"	U	16	9"	5'	13'-0"
17	6"	16'-0"	U	17	4"	6'	15'-9"
18	6"	8'-3"	U	18	4"	4'	15'-6"
19	6"	2'-7"	U	19	9"	5'	10'-9"
				20	4"	4'	12'-6"
				21	4"	4'	12'-9"
22	4"	4'-5"	C	22	3"	4'	12'-6"
23	8"	2'-6"	J	23	6"	6'	13'-0"
24	31"	3'-9"	C	24	31"	9'	6'-0"
				25	18"	7'	11'-6"
P1	14"	6'-0"	L	26	6"	6'	10'-9"
P2	4"	20'-2"	U	27	13"	7'	8'-6"
P3	4"	18'-11"	U				
P4	2"	16'-6"	U	N12	5"	8'-0"	U
P5	2"	8'-4"	U	N1	6"	5'	9'-2"
P6	3"	29'-2"	U	N2	18"	5'	17'-2"
P7	3"	27'-11"	U	N3	6"	5'	4'-8"
P8	2"	23'-6"	U	N4	16"	5'	12'-8"
P9	2"	17'-4"	U	N5	24"	5'	10'-2"

Class of Concrete: Cu. No. 74.2
Reinforcement Bars: Lbs. 6810
Exp. Bolts (42) Each: 68
Concrete Removal: Cu. Yds. 1
Concrete Piles Lin. Ft.: 270



Bar	a	b
n_1	3'-3"	8"
n_2	4'-6"	1'-3"

*P bars shall conform to the requirements of ASTM A-615 or A-617, except the minimum yield strength shall not be less than 33,000 p.s.i. nor more than 43,000 p.s.i.

EAST ABUTMENT DETAILS
S&I RET'S SEC. 12 BARS-1
McHENRY COUNTY
STA. 441+40.30

DESIGNED: Paul S. W.
CHECKED: D. J. Ryan
DRAWN: Leona Heeren
CHECKED: D. J. R. P. S. C.

EXAMINED: [Signature]
PASSED: [Signature]
APPROVED: [Signature]

DATE: 12/14/10

FILE NAME = P:\CBBEL\WEST Projects\2009\09-0147_IL173\Civil\Ugma\Shr\DI68125-ant-eo.dwg; 08-08-2011

WILLS BURKE KELSEY ASSOCIATES LTD.
116 West Main Street, Suite 201
St. Charles, Illinois 60174
(630) 443-7755

USER NAME = #USER#	DESIGNED -	REVISED -
PLOT SCALE =	DRAWN -	REVISED -
PLOT DATE = 1/5/2011	CHECKED -	REVISED -
	DATE - 12/14/10	REVISED -

STATE OF ILLINOIS
DEPARTMENT OF TRANSPORTATION

EXISTING STRUCTURE PLANS
FOR REFERENCE ONLY

SCALE: SHEET NO. 75 OF 106 SHEETS STA. TO STA.

F.A.P. RTE.	SECTION	COUNTY	TOTAL SHEETS	SHEET NO.
303	132 B-2	McHENRY	106	75
CONTRACT NO. 60129				
FED. ROAD DIST. NO. [ILLINOIS] FED. AID PROJECT				

EXISTING STRUCTURE PLANS - FOR REFERENCE ONLY