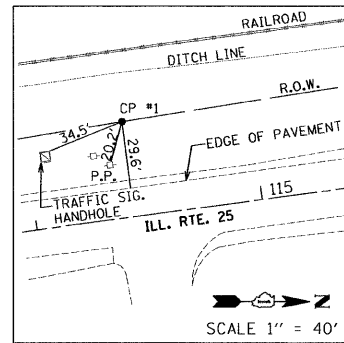
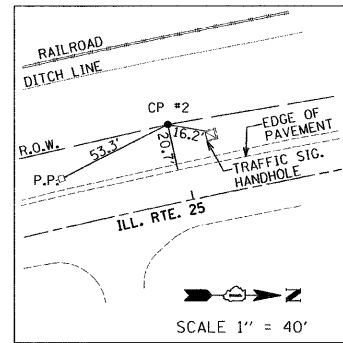


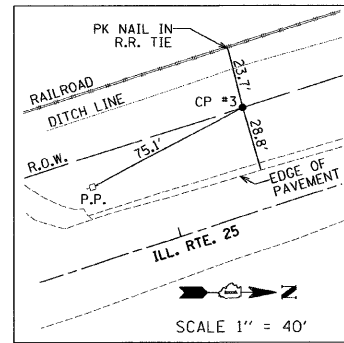
ALIGNMENT COORDINATES - ILL. RTE. 25			
IL25	STATION	N	E
POB	100+00.00	1,870,491.1715	987,847.4071
PC	104+82.92	1,870,951.0962	987,700.1501
PI	108+40.96	1,871,292.0787	987,590.9756
PT	111+97.12	1,871,646.9570	987,543.5463
POT	111+97.12	1,871,646.9570	987,543.5463
POT	115+45.30	1,871,992.0657	987,497.4226
POT	119+60.30	1,872,402.9589	987,439.1809
POT	121+61.09	1,872,601.7663	987,411.0096
POT	123+60.84	1,872,799.4958	987,382.6896
POT	124+60.09	1,872,896.7476	987,362.8614



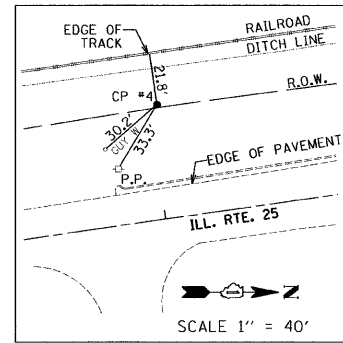
CONTROL POINT #1
 SET 5/8" REBAR IN GRASS
 STATION 114+43.31, 42.15' LT.
 N 1,871,885.39
 E 987,469.15



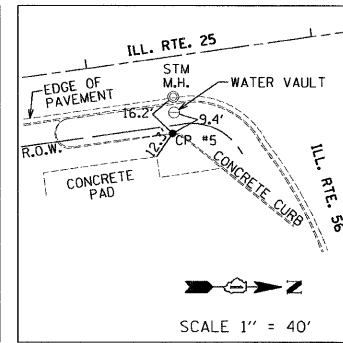
CONTROL POINT #2
 SET 5/8" REBAR IN GRASS
 STATION 108+95.87, 34.58' LT.
 N 1,871,343.00
 E 987,560.72



CONTROL POINT #3
 SET 5/8" REBAR IN GRASS
 STATION 102+43.12, 45.54' LT.
 N 1,870,708.83
 E 987,729.90



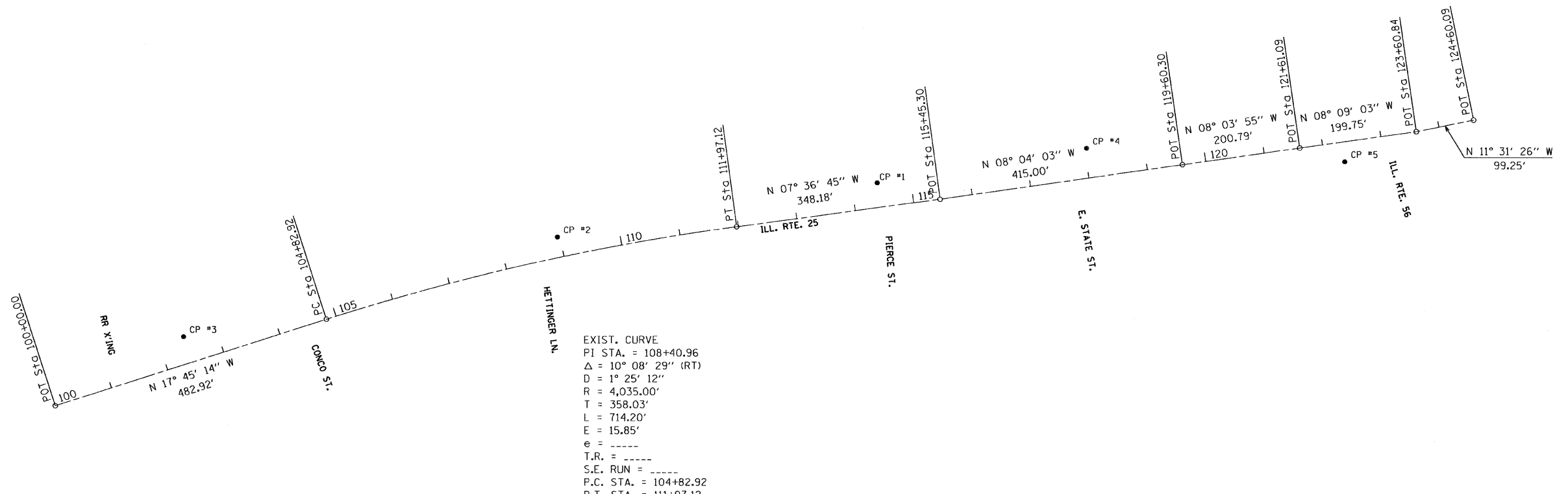
CONTROL POINT #4
 SET 5/8" REBAR IN GRASS
 STATION 118+03.32, 50.43' RT.
 N 1,872,240.46
 E 987,411.28



CONTROL POINT #5
 SET CHISELED 'X' ON CONCRETE CURB
 STATION 122+33.44, 33.62' RT.
 N 1,872,678.15
 E 987,434.04
 ELEV=676.42'

BENCHMARK INFORMATION:

BM #DK3234 - BRASS DISK SET LIGHT POLE BASE ON THE SOUTH SIDE OF ILL. RTE. 56, EAST OF RTE. 25, 68.6' NORTHEAST OF A POWER POLE, 53.4' WEST OF A HYDRANT AND 30.2' SOUTH OF THE CENTERLINE OF RTE. 56. ELEVATION=694.24'



SCALE 1" = 100'

FILE NAME =	USER NAME = .USER.	DESIGNED - EF	REVISED -	STATE OF ILLINOIS DEPARTMENT OF TRANSPORTATION	IL 25 (RIVER ST.) - IL 56 TO I-88 ALIGNMENT AND TIES		F.A.U. RTE. 2503	SECTION TWP-1-T	COUNTY KANE	TOTAL SHEETS 43	SHEET NO. 5
FILEL	PLOT SCALE = 100.0000' / IN.	DRAWN - EF	REVISED -		SCALE: NTS	SHEET NO. 1 OF 1 SHEETS	STA. TO STA.	CONTRACT NO. 60K07			
	PLOT DATE = 2/10/2011	CHECKED - RS	REVISED -					ILLINOIS FED. AID PROJECT			
		DATE - 02-14-2011	REVISED -								