

F.A.P. R.T.E.	SECTION	COUNTY	TOTAL SHEETS	SHEET NO.
365	60 RS-3	KANE	23	1
FED. ROAD DIST. NO. 1	ILLINOIS	CONTRACT NO.	60K81	

STATE OF ILLINOIS
DEPARTMENT OF TRANSPORTATION
DIVISION OF HIGHWAYS

FOR INDEX OF SHEETS, SEE SHEET NO. 2

PROPOSED
HIGHWAY PLANS

D-91-606-10



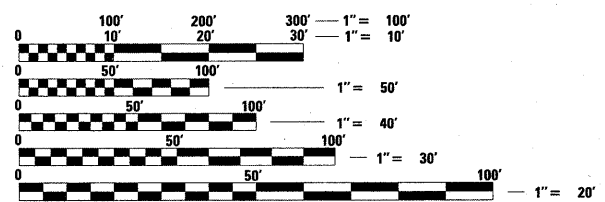
LOCATION OF SECTION INDICATED THUS: - [black rectangle] -

PROJECT LOCATED IN THE CITY OF AURORA AND VILLAGE OF NORTH AURORA

F.A.P. 365: IL ROUTE 56 (BUTTERFIELD ROAD)
LOCATION 1: IL ROUTE 25 TO MITCHELL ROAD
LOCATION 2: FARNSWORTH AVE. TO DuPAGE COUNTY LINE
SECTION: 60 RS-3
RESURFACING (3P)
PROJECT: NHF-0365(013)
KANE COUNTY
C-91-606-10

TRAFFIC DATA:

2009 ADT = 12,500 - 18,100
SPEED LIMIT = 35-50 MPH

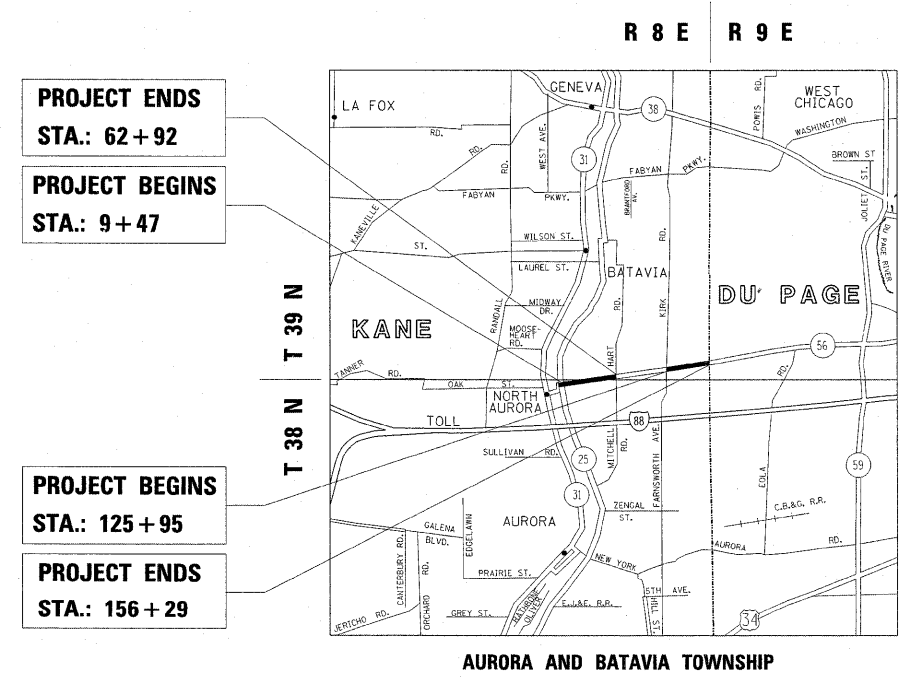


FULL SIZE PLANS HAVE BEEN PREPARED USING STANDARD ENGINEERING SCALES. REDUCED SIZED PLANS WILL NOT CONFORM TO STANDARD SCALES. IN MAKING MEASUREMENTS ON REDUCED PLANS, THE ABOVE SCALES MAY BE USED.

J.U.L.I.E.
JOINT UTILITY LOCATION INFORMATION FOR EXCAVATION
1-800-892-0123
OR 811

PROJECT ENGINEER: JENPAI CHANG (847) 705-4432
PROJECT MANAGER: KEN ENG (847) 705-4247

CONTRACT NO. 60K81



PROJECT ENDS
STA.: 62 + 92

PROJECT BEGINS
STA.: 9 + 47

PROJECT BEGINS
STA.: 125 + 95

PROJECT ENDS
STA.: 156 + 29

LOCATION 1:
GROSS AND NET LENGTH OF PROJECT = 5345 FEET = 1.01 MILES

LOCATION 2:
GROSS AND NET LENGTH OF PROJECT = 3034 FEET = 0.58 MILES

STATE OF ILLINOIS
DEPARTMENT OF TRANSPORTATION
DIVISION OF HIGHWAYS

SUBMITTED JANUARY 24, 20 11

Diane M. O'Keefe es
DEPUTY DIRECTOR OF HIGHWAYS, REGION ENGINEER

March 25 20 11

Scott E. Stitt P.E. es
acting ENGINEER OF DESIGN AND ENVIRONMENT

March 25 20 11

Christine M. Road es
DIRECTOR OF HIGHWAYS, CHIEF ENGINEER

PRINTED BY THE AUTHORITY
OF THE STATE OF ILLINOIS