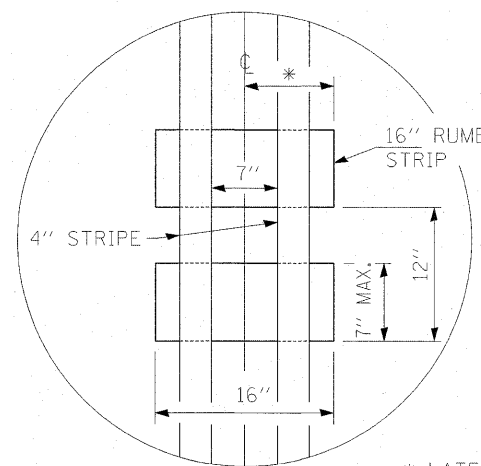
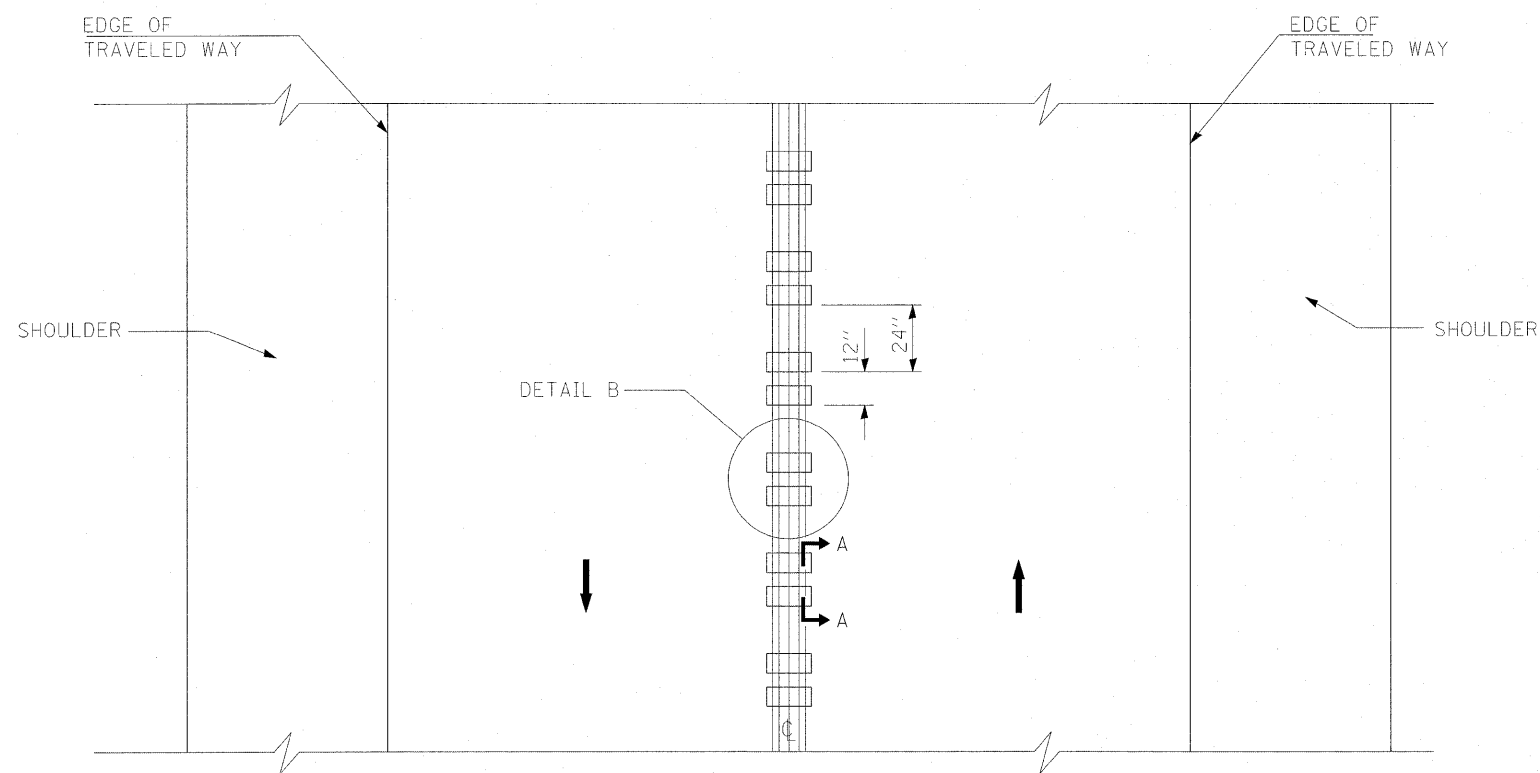


SECTION A-A



DETAIL B

* LATERAL DEVIATION SHALL NOT EXCEED ONE INCH IN 100 FEET.



TWO-WAY ROAD

GENERAL NOTES

SEE STANDARD 780001 FOR OTHER STRIPING LAYOUTS.

RUMBLE STRIPS SHALL NOT BE PLACED ON BRIDGES.

ALL RUMBLE STRIPS SHALL BE MILLED.

CENTERLINE RUMBLE STRIPS SHALL BE CONTINUOUS THROUGH CONNECTIONS OF SIDEROADS WITH NO LEFT TURN LANES.

DISCONTINUE CENTERLINE RUMBLE STRIPS THROUGH THE LIMITS OF ALL LEFT TURN LANES, INCLUDING ANY LANE TAPER SECTIONS.

WHERE USED, ADJUST SPACING OF RAISED REFLECTIVE PAVEMENT MARKERS TO FALL IN WIDER GAP BETWEEN RUMBLE STRIPS.

RUMBLE STRIPES FOR
CENTERLINE,
NON-FREEWAY

FILE NAME =	USER NAME = becker.tom	DESIGNED -	REVISED -	STATE OF ILLINOIS DEPARTMENT OF TRANSPORTATION	RUMBLE STRIPES FOR CENTERLINE, NON-FREEWAY	F.A.P. RTE.	SECTION	COUNTY	TOTAL SHEETS	SHEET NO.
ci:\pw\work\p\idot\becker.tom\d0244424\010610-shr-plan.dgn	DRAWN -	REVISED -	365			60 RS-3	KANE	23	23	
PLOT SCALE = 50.0000' / IN.	CHECKED -	REVISED -	CONTRACT NO. 60K81							
PLOT DATE = 2/7/2011	DATE -	REVISED -	FED. ROAD DIST. NO. 1 ILLINOIS FED. AID PROJECT							
						SCALE:	SHEET NO.	OF SHEETS	STA.	TO STA.