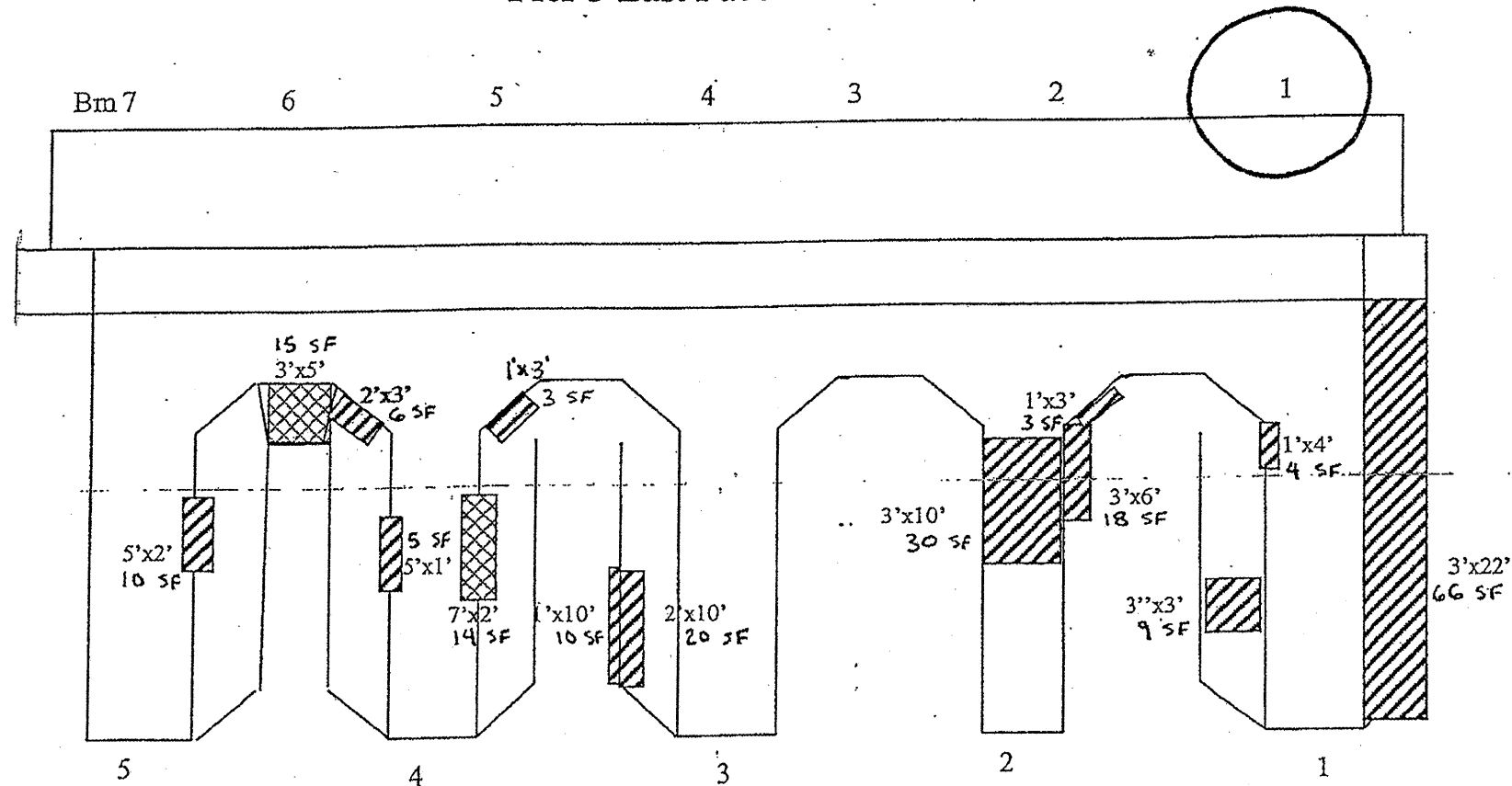


Pier 3 East Face



Pier 3 West Face

PIER 3 BILL OF MATERIAL		
	UNIT	QTY.
STRUCTURAL REPAIR OF CONCRETE $\leq$ 5"	SQ. FT.	310
STRUCTURAL REPAIR OF CONCRETE $>$ 5"	SQ. FT.	62
TEMPORARY SHORING AND CRIBBING	EACH	2

REACTIONS (West Side)		
DL	27.1	kips
LL	42.3	kips
Imp	12.1	kips
TOTAL	81.5	kips

REACTIONS (East Side)		
DL	26.7	kips
LL	42.3	kips
Imp	12.1	kips
TOTAL	81.1	kips

- STRUCTURAL REPAIR OF CONCRETE  $\leq$  5"
- STRUCTURAL REPAIR OF CONCRETE  $>$  5"
- TEMPORARY SHORING AND CRIBBING

FILE NAME =	USER NAME = econnell	DESIGNED -	REVISED - 3/25/11 JER
ca:\pwork\pudot\connell\td0228365\0750510\sh-plan.dgn	750510-sh-plan.dgn	DRAWN -	REVISED -
PLOT SCALE = 1/8" = 1'-0"	1/8" = 1'-0"	CHECKED -	REVISED -
PLOT DATE = 9/2/2010		DATE -	REVISED -

STATE OF ILLINOIS  
DEPARTMENT OF TRANSPORTATION

LOCATION 2	SN 016-0955	PIER 3
PIER STRUCTURAL REPAIR		
SCALE:	SHEET NO. 5 OF 12 SHEETS	STA. TO STA.

F.A. RTE.	SECTION	COUNTY	TOTAL SHEETS	SHEET NO.
VAR	2010-068 BR	COOK	69	55
ILLINOIS FED. AID PROJECT			CONTRACT NO. 60LS1	