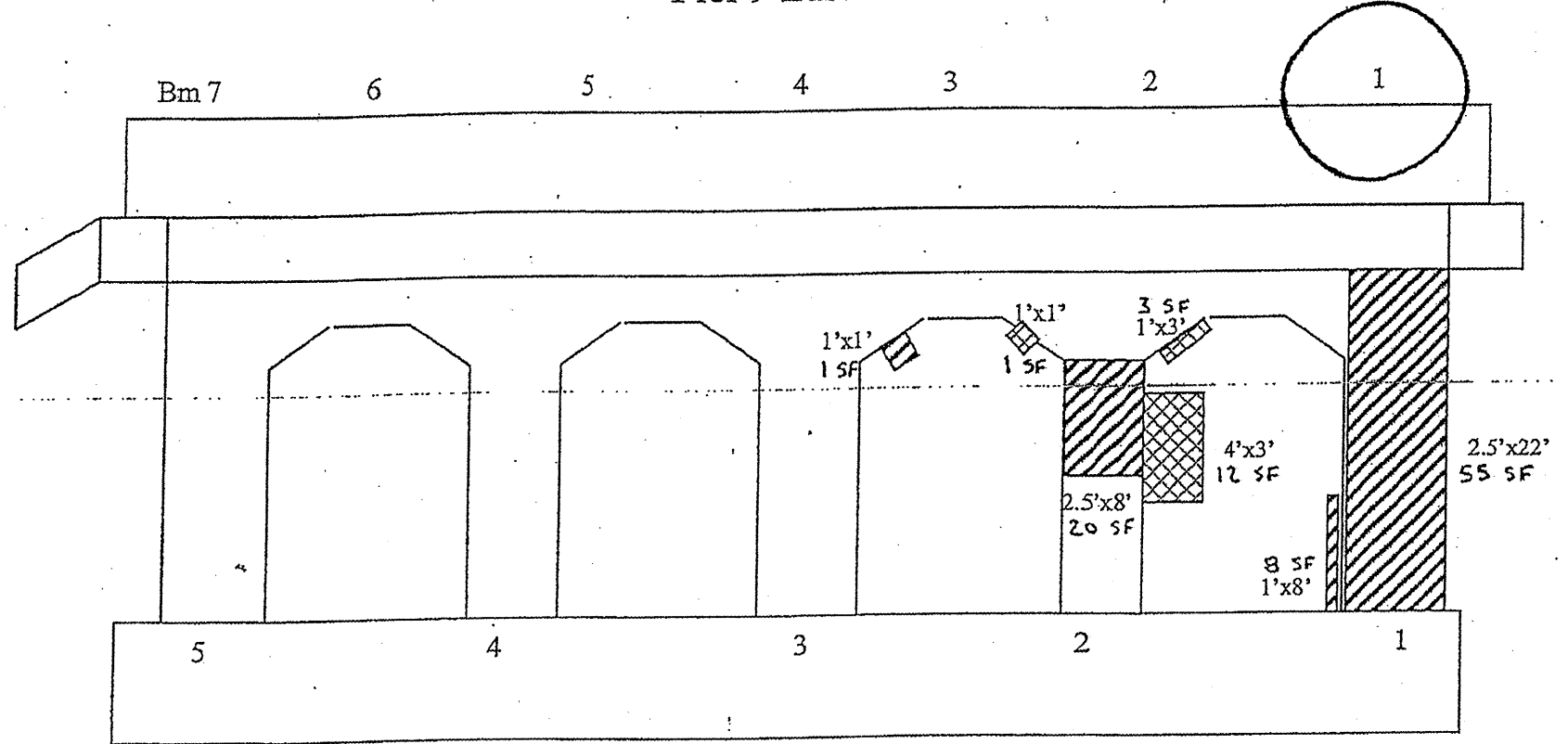


Pier 9 East Face



Pier 9 West Face

PIER 9 BILL OF MATERIAL		
	UNIT	QTY.
STRUCTURAL REPAIR OF CONCRETE \leq 5"	SQ. FT.	213
STRUCTURAL REPAIR OF CONCRETE $>$ 5"	SQ. FT.	28
TEMPORARY SHORING AND CRIBBING	EACH	2

REACTIONS (West Side)		
DL	27.2	kips
LL	42.4	kips
Imp	12.2	kips
TOTAL	81.8	kips

REACTIONS (East Side)		
DL	26.1	kips
LL	42.3	kips
Imp	12.1	kips
TOTAL	80.5	kips

While developing shoring details at this location the contractor must consider the Railroad's limitations for clearances.

- STRUCTURAL REPAIR OF CONCRETE \leq 5"
- STRUCTURAL REPAIR OF CONCRETE $>$ 5"
- TEMPORARY SHORING AND CRIBBING

FILE NAME *	USER NAME * acornville	DESIGNED -	REVISED - 3/25/11 JEK	STATE OF ILLINOIS DEPARTMENT OF TRANSPORTATION	LOCATION 2	SN 016-0955	PIER 9
c:\p\work\p\dat\acornville\ad0228365\0	758518-shr-plan.dgn	DRAWN -	REVISED -	PIER STRUCTURAL REPAIR	SCALE:	SHEET NO. 11 OF 12 SHEETS	STA. TO STA.
PLOT SCALE = 1/4" = 1'-0"	PLOT DATE = 9/2/2010	CHECKED -	REVISED -	F.A. R.T.E. VAR.	SECTION 2010-068 BR	COUNTY COOK	TOTAL SHEETS 69
				CONTRACT NO. 60L51	ILLINOIS FED. AID PROJECT		