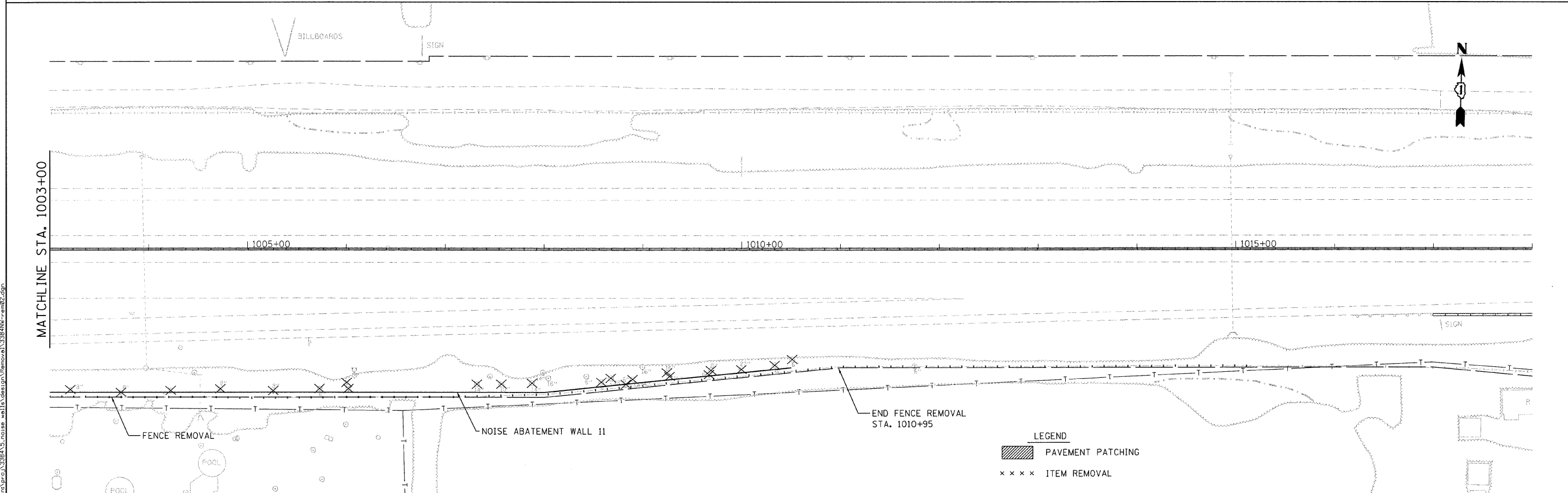


MATCHLINE STA. 1003+00



MATCHLINE STA. 1003+00

- LEGEND**
- PAVEMENT PATCHING
  - ITEM REMOVAL

**ENGINEERING CONSULTANT**  
**Clorba Group, Inc.**  
 CONSULTING ENGINEERS  
 2107 North Cambridge Avenue, Suite 402  
 Chicago, Illinois 60656  
 Tel: 773.775.4000 Fax: 773.775.4014  
 E-mail: dthrusa@clorba.com

|                              |                 |           |
|------------------------------|-----------------|-----------|
| USER NAME = jk.jeliman       | DESIGNED - CRC  | REVISED - |
| PLLOT SCALE = 50.0000' / IN. | DRAWN - JMK     | REVISED - |
| PLLOT DATE = 3/24/2011       | CHECKED - SNS   | REVISED - |
|                              | DATE - 1/7/2011 | REVISED - |

**STATE OF ILLINOIS  
 DEPARTMENT OF TRANSPORTATION**

**F.A.I. NOISE ABATEMENT WALLS  
 REMOVAL PLAN**

SCALE: 1" = 50' SHEET NO. 18 OF 112 SHEETS STA. 988+00 TO STA. 1018+00

| F.A.I. RTE.               | SECTION | COUNTY | TOTAL SHEETS | SHEET NO. |
|---------------------------|---------|--------|--------------|-----------|
| 80                        | 99-5R-1 | WILL   | 112          | 18        |
| CONTRACT NO. 60N86        |         |        |              |           |
| ILLINOIS FED. AID PROJECT |         |        |              |           |