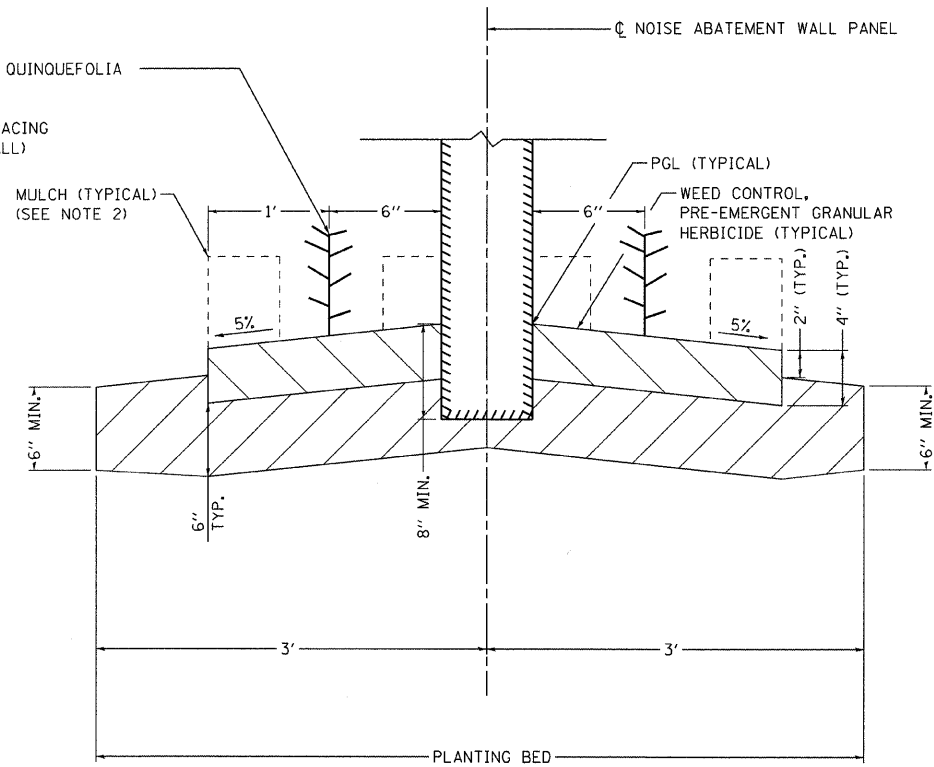
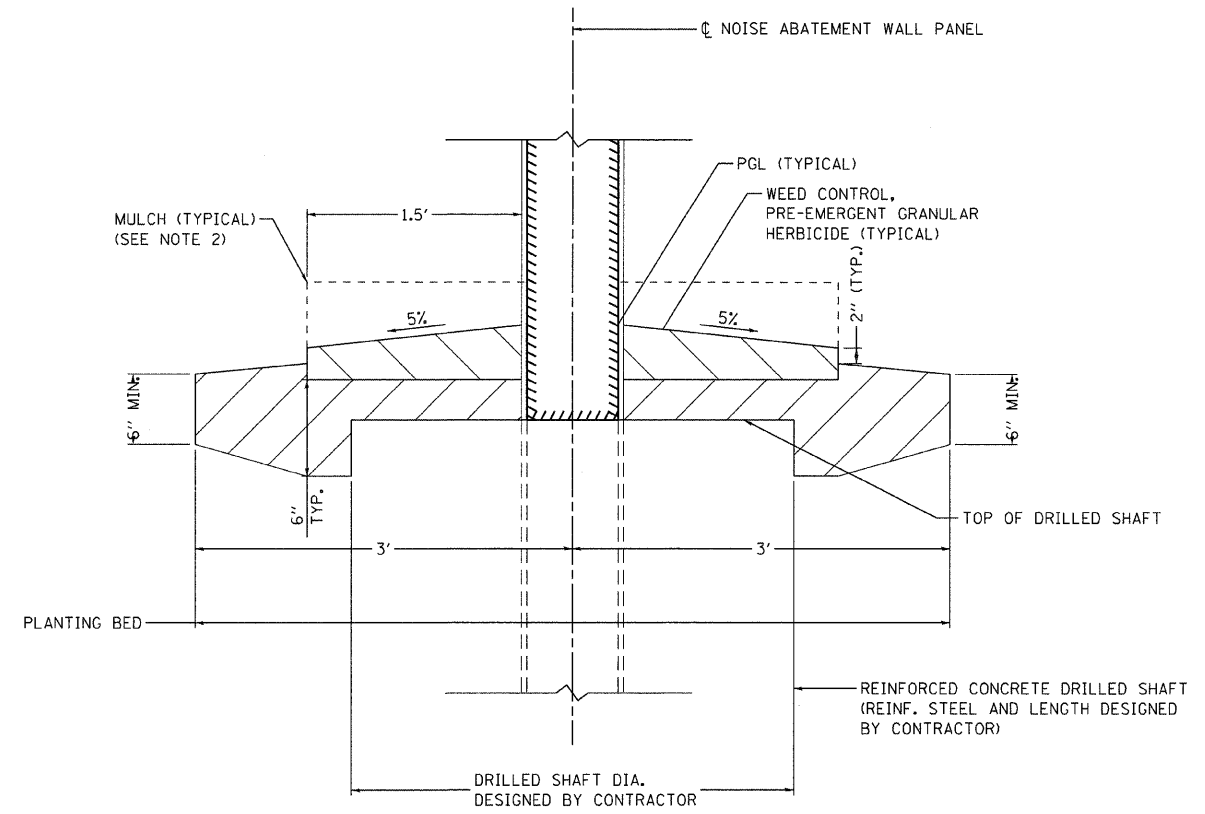


VINE-PARTHENOCCISSUS QUINQUEFOLIA
(VIRGINIA CREEPER),
1-GALLON POT
(PLANTED AT 3'-0" SPACING
ON BOTH SIDES OF WALL)



LANDSCAPING DETAIL AT
BOTTOM OF PANEL

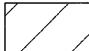
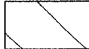


LANDSCAPING DETAIL AT
FOUNDATION

NOTES

1. COMPOST SHOWN PRIOR TO INCORPORATION OF TOPSOIL BY TILLING.
2. MULCH SHALL BE PLACED TO COVER THE ENTIRE PLANTING BED EXCEPT AT VINE LOCATIONS.

LEGEND

-  TOPSOIL FURNISH AND PLACE, 6"
-  COMPOST FURNISH AND PLACE, 4" (SEE NOTE 1)

ENGINEERING CONSULTANT



USER NAME = jk.jellman

DESIGNED - CRC

REVISED -

DRAWN - JMK

REVISED -

PLOT SCALE = 1/8" = 1' IN.

CHECKED - SNS

REVISED -

PLOT DATE = 2/15/2011

DATE = 1/7/2011

REVISED -

STATE OF ILLINOIS
DEPARTMENT OF TRANSPORTATION

I-80 NOISE ABATEMENT WALLS
TYPICAL SECTION LANDSCAPING DETAILS

SCALE: SHEET NO. OF SHEETS STA. TO STA.

F.A.I. RTE.	SECTION	COUNTY	TOTAL SHEETS	SHEET NO.
80	99-5R-1	WILL	112	45
CONTRACT NO. 60N86				
ILLINOIS FED. AID PROJECT				

c:\p\p\333A\5_note_walls\design\Detail\333A\W_Detail1B.dgn