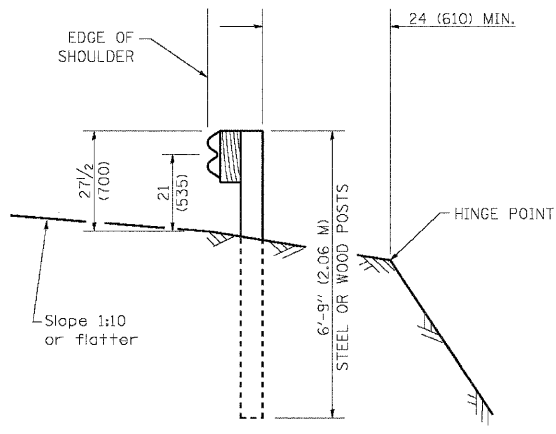
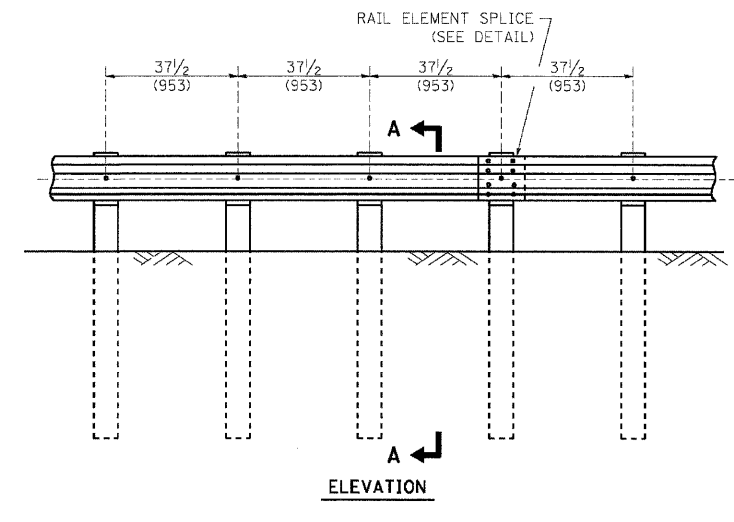


TYPE A

6'-3" (1.905 M) TYPICAL POST SPACING

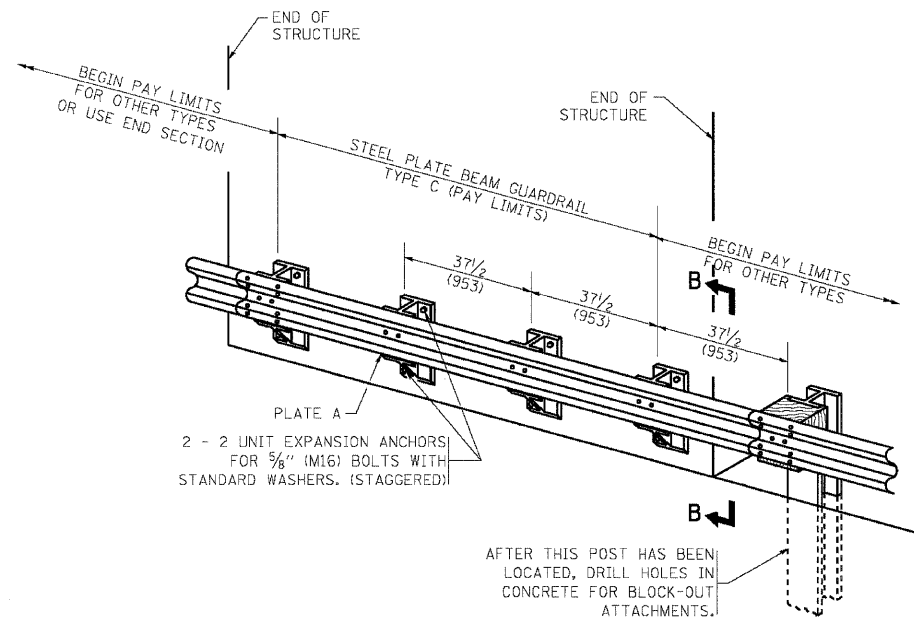


SECTION A-A



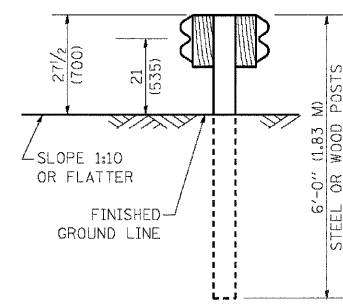
TYPE A

37 1/2 (953) CLOSED POST SPACING

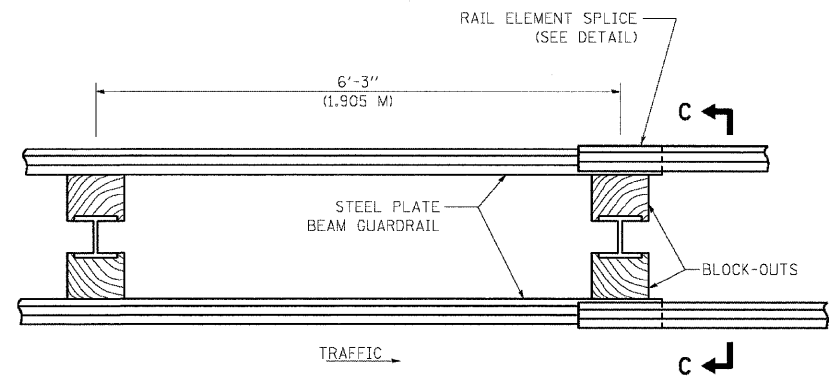


TYPE C

37 1/2 (953) BLOCK-OUT SPACING

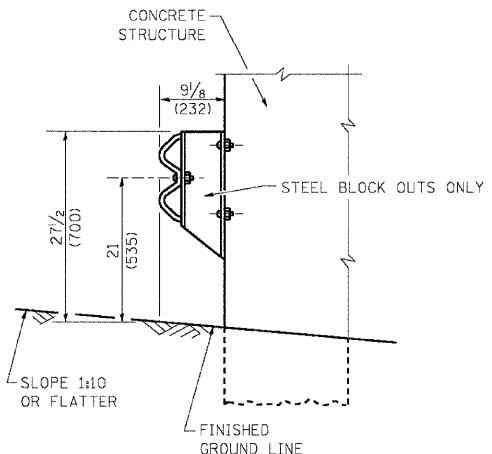


SECTION C-C



TYPE D

DOUBLE STEEL PLATE BEAM GUARDRAIL
6'-3" (1.905 M) TYPICAL POST SPACING



SECTION B-B

GENERAL NOTES

ALL SLOPE RATIOS ARE EXPRESSED AS UNITS OF VERTICAL DISPLACEMENT TO UNITS OF HORIZONTAL DISPLACEMENT (V:H).

ALL DIMENSIONS ARE IN INCHES (MILLIMETERS) UNLESS OTHERWISE SHOWN.

THE EXISTING STEEL POSTS MAY BE DRILLED TO MATCH THE BOLT PATTERN SHOWN HEREIN FOR THE WOOD BLOCK-OUT, OR A NEW STEEL POST SHALL BE PROVIDED.

THIS DETAIL IS APPLICABLE TO THE GUARDRAIL SYSTEM USED PRIOR TO JANUARY 1, 2007. FOR DETAILS ON THE MIDWEST GUARDRAIL SYSTEM, SEE STANDARD 630001.

n:\pco\1338415_moose_walls\design\Details\338415-Details.dwg (Standard.dwg)

ENGINEERING CONSULTANT

Clorba Group, Inc.
CONSULTING ENGINEERS
231 North DuSable Avenue, Suite 402
Oak Brook, IL 60110
TEL: 708/716-2008 FAX: 708/775-6014
WWW.CGROUPENG.COM

USER NAME = gnglianobt	DESIGNED -	REVISED - 10-31-06
PLDT SCALE = 50.0000' / IN.	DRAWN -	REVISED -
PLDT DATE = 1/4/2008	CHECKED -	REVISED -
	DATE -	REVISED -

**STATE OF ILLINOIS
DEPARTMENT OF TRANSPORTATION**

REMOVE AND REERECT STEEL PLATE BEAM GUARDRAIL			
SCALE: NONE	SHEET NO. 1 OF 4 SHEETS	STA.	TO STA.

F.A.I. RTE.	SECTION	COUNTY	TOTAL SHEETS	SHEET NO.
80	99-5R-1	WILL	112	47
BM-21			CONTRACT NO. 60N86	
FED. ROAD DIST. NO. 1 ILLINOIS FED. AID PROJECT				