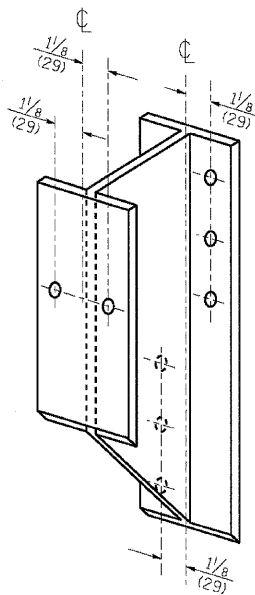
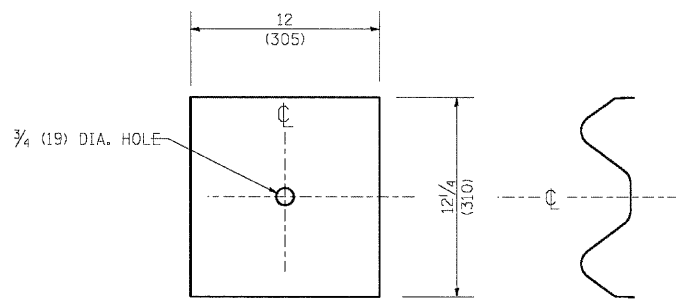


**STEEL POST CONSTRUCTION**



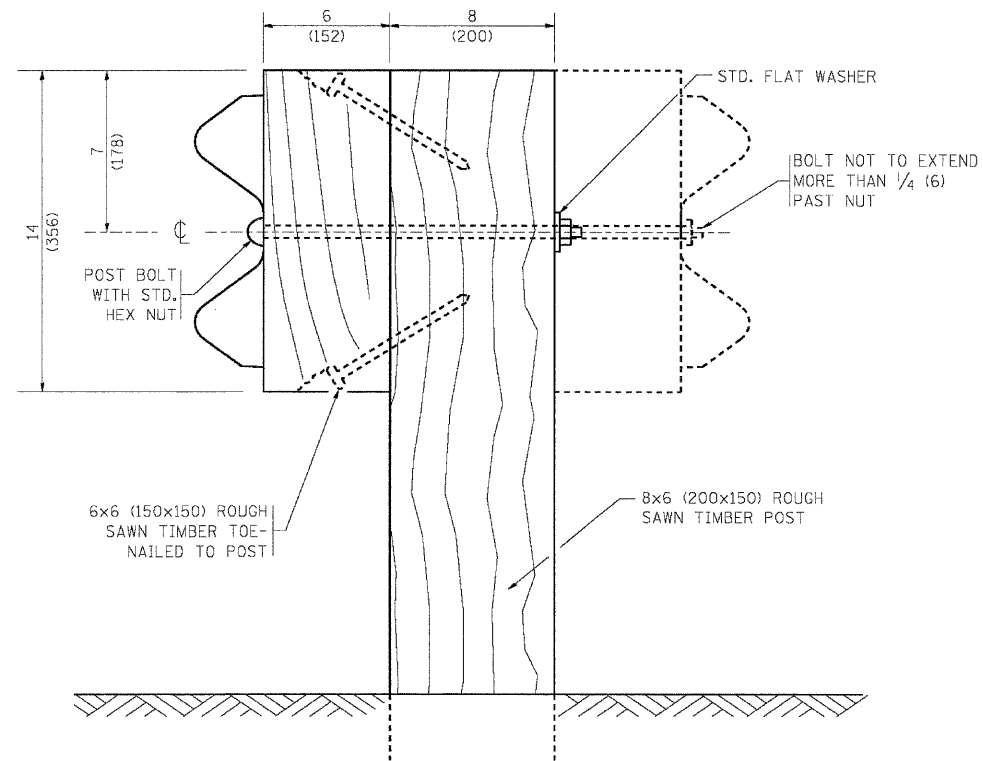
**STEEL BLOCK-OUT DETAIL**



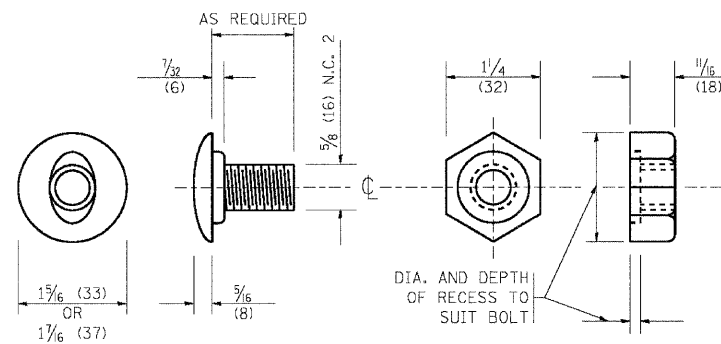
**NOTE:**

PLATE A SHALL BE PLACED BETWEEN RAIL ELEMENT AND BLOCK-OUT AT NON-SPLICE MOUNTING POINTS ONLY WHEN STEEL BLOCK-OUTS ARE USED.

**PLATE A**



**WOOD POST CONSTRUCTION**



**POST OR SPLICE BOLT & NUT**

c:\p\p\3384\5\_norse\_walls\design\Detail\3384NW-Detail01B (Standard).dgn

|  |  |            |                    |   |  |                         |                |   |             |                    |              |
|--|--|------------|--------------------|---|--|-------------------------|----------------|---|-------------|--------------------|--------------|
| <p>ENGINEERING CONSULTANT<br/>CONSULTING ENGINEERS</p> | USER NAME = gaglianobt   | DESIGNED - | REVISED - 10-31-06 | <p align="center"><b>STATE OF ILLINOIS<br/>DEPARTMENT OF TRANSPORTATION</b></p> | REMOVE AND REERECT<br>STEEL PLATE BEAM GUARDRAIL |                         | F.A.I. RTE. 80 | SECTION 99-5R-I   | COUNTY WILL | TOTAL SHEETS 112   | SHEET NO. 48 |
|  | <p>PLLOT SCALE = 50.0000' / IN.</p> <p>PLLOT DATE = 1/4/2008</p> | DRAWN -    | REVISED -          |   | SCALE: NONE                                      | SHEET NO. 2 OF 4 SHEETS | STA. TO STA.   | <p align="center"><b>BM-21</b></p> <p>FED. ROAD DIST. NO. 1 ILLINOIS FED. AID PROJECT</p> |             | CONTRACT NO. 60N86 |              |