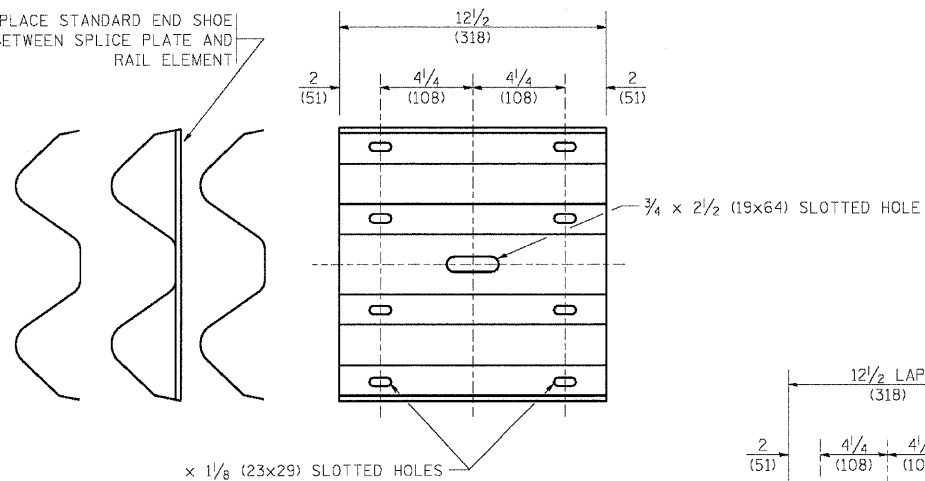
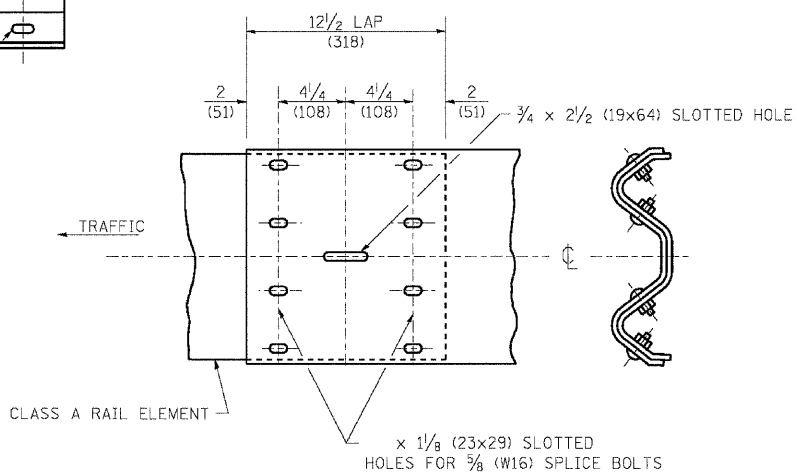


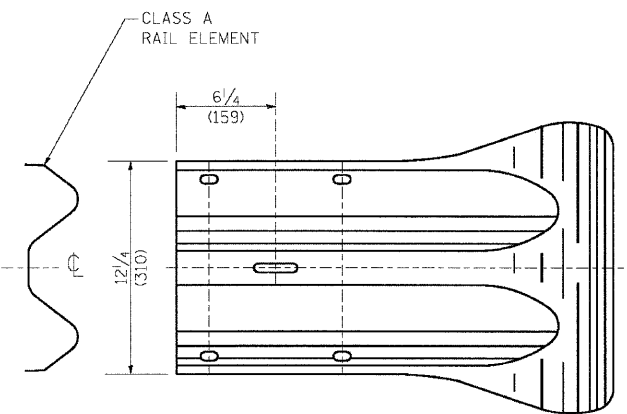
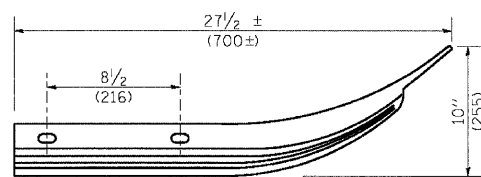
PLACE STANDARD END SHOE BETWEEN SPLICE PLATE AND RAIL ELEMENT



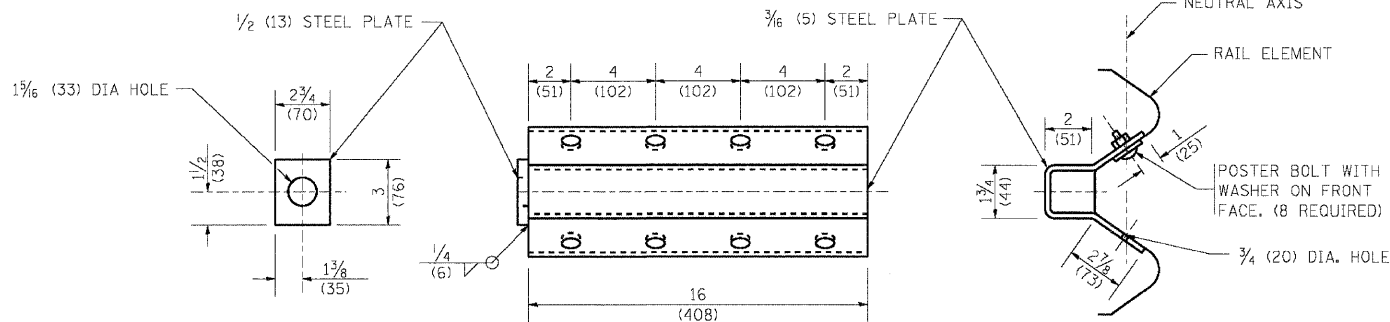
**SPLICE PLATE**



**RAIL ELEMENT SPLICE**



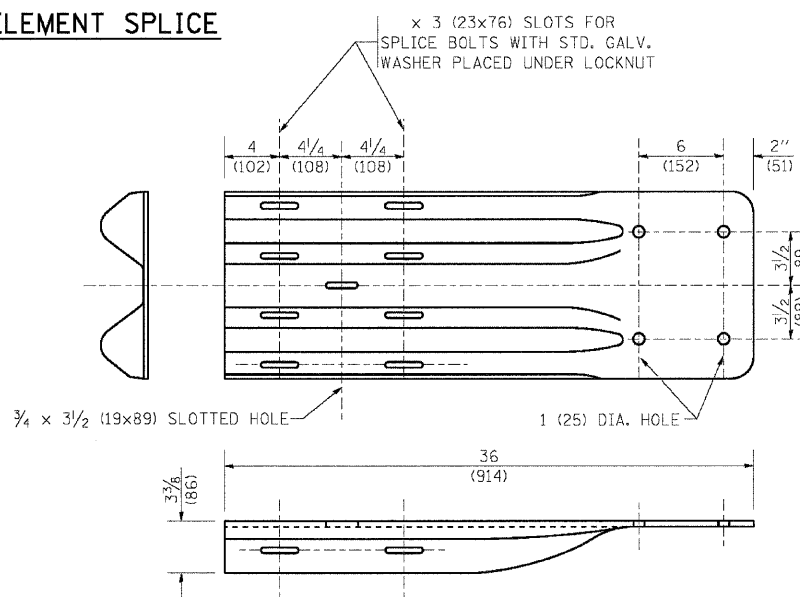
**END SECTION**



**NOTE:**

ANCHOR PLATE T SHALL BE USED TO ATTACH CABLE ASSEMBLY TO GUARDRAIL WHEN REQUIRED ON TRAFFIC BARRIER TERMINALS.

**ANCHORE PLATE T DETAILS**



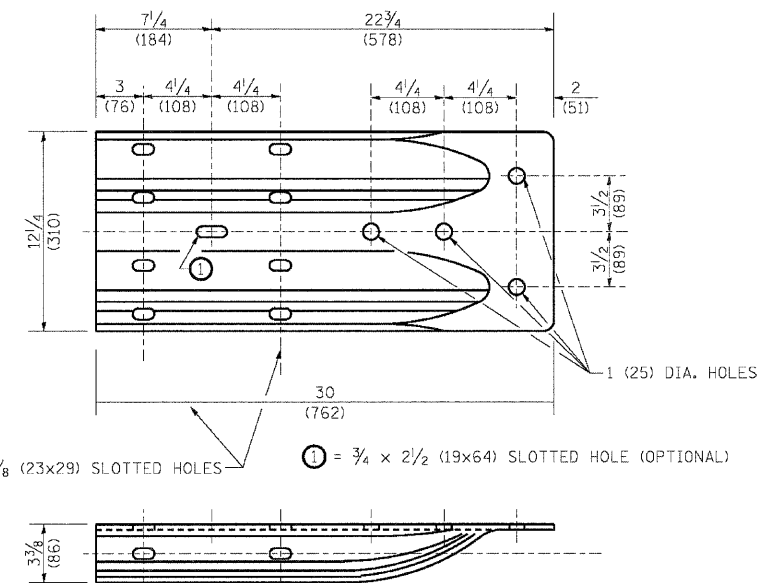
**END SHOE**

**NOTE:**

WHEN END SHOE IS ATTACHED TO A BRIDGE PARAPET WHICH HAS AN EXPANSION JOINT, THE BOLTS SHALL BE PROVIDED WITH A LOCKNUT OR DOUBLE NUT AND SHALL BE TIGHTENED ONLY TO A POINT THAT WILL ALLOW GUARDRAIL MOVEMENT.

THE STANDARD END SHOE SHALL BE ATTACHED TO THE CONCRETE WITH PRE-DRILLED OR SELF-DRILLING ANCHOR BOLTS. THE ANCHOR CONE SHALL BE SET FLUSH WITH THE SURFACE OF THE CONCRETE.

EXTERNALLY THREADED STUDS PROTRUDING FROM THE SURFACE OF THE CONCRETE WILL NOT BE PERMITTED.



**ALTERNATE END SHOE**

c:\p\3384\5\_noise\_wells\design\Details\3384NW-Detail101C.dwg

	USER NAME = gagliandb	DESIGNED -	REVISED - 10-31-06	<b>STATE OF ILLINOIS DEPARTMENT OF TRANSPORTATION</b>	<b>REMOVE AND REERECT STEEL PLATE BEAM GUARDRAIL</b>		F.A.I. RTE. 80	SECTION 99-5R-I	COUNTY WILL	TOTAL SHEETS 112	SHEET NO. 49
	PLDT SCALE = 5/2,000 / IN.	DRAWN -	REVISED -		SCALE: NONE	SHEET NO. 3 OF 4 SHEETS	STA. TO STA.	<b>BM-21</b>		<b>CONTRACT NO. 60N86</b>	
	PLDT DATE = 1/1/2009	CHECKED -	REVISED -				FED. ROAD DIST. NO. 1 ILLINOIS FED. AID PROJECT				