

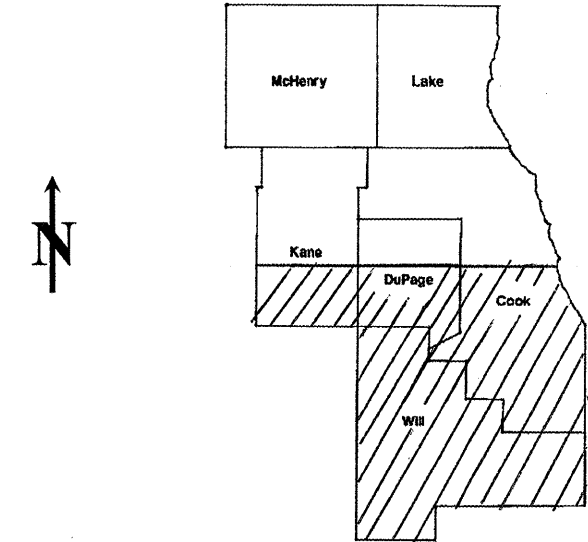
DISTRICT ONE BUREAU OF MAINTENANCE: J. STUMPNER
MAINTENANCE LANDSCAPE DESIGNER: R. WANNER / T. JACKSON (847) 705-4171

ROUTE	SECTION	COUNTY	TOTAL SHEETS	SHEET NUMBER
VARIOUS	2011-251-I	VARIOUS	9	1

CONTRACT 60P31
D-91-508-11

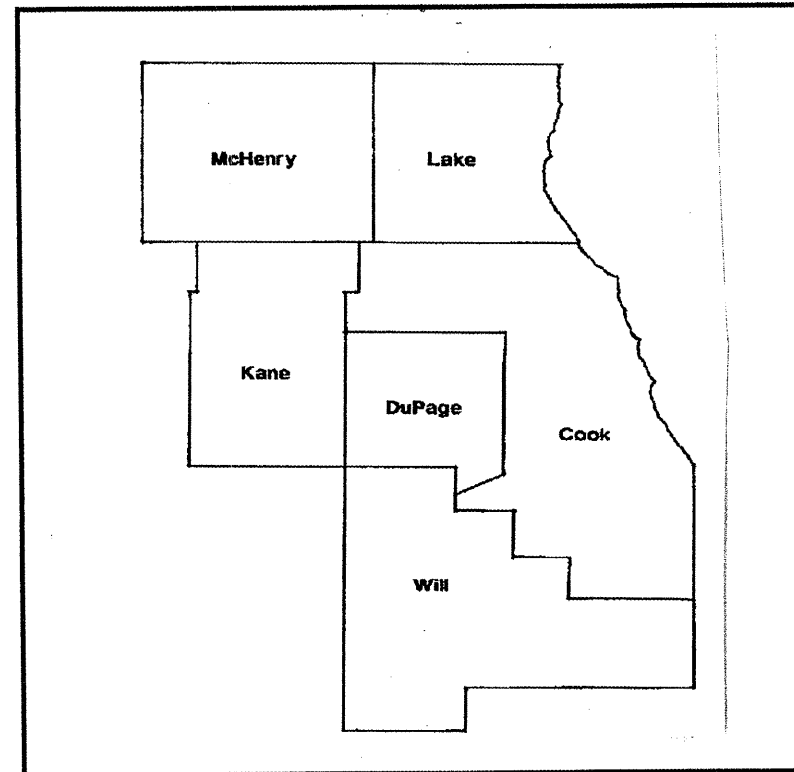
STATE OF ILLINOIS
DEPARTMENT OF TRANSPORTATION
DIVISION OF HIGHWAYS
DISTRICT ONE
PROPOSED HIGHWAY PLANS

ROUTE: VARIOUS SOUTH
SECTION: 2011-251-I
MOWING
VARIOUS COUNTIES
C-91-508-11



LOCATION OF IMPROVEMENT INDICATED THUS:

IMPROVEMENT IS IN VARIOUS
LOCATIONS WITHIN DISTRICT
ONE



STATE OF ILLINOIS
DEPARTMENT OF TRANSPORTATION
DIVISION OF HIGHWAYS

SUBMITTED: March 17 2011
Diane O'Keefe
DEPUTY DIRECTOR OF HIGHWAYS, REGION ENGINEER

March 25 2011
Scott E. Stitt, PE for
acting ENGINEER OF DESIGN AND ENVIRONMENT

March 25 2011
Christine M. Reed for
DIRECTOR OF HIGHWAYS, CHIEF ENGINEER

**PRINTED BY THE AUTHORITY
OF THE STATE OF ILLINOIS**

J.U.L.I.E.: JOINT UTILITY LOCATION
INFORMATION FOR EXCAVATION
(800) 892-0123 OR 811

CONTRACT 60P31

ROUTE	SECTION	COUNTY	TOTAL SHEETS	SHEET NUMBER
VARIOUS	2011-251-I	VARIOUS	9	2

CONTRACT 60P31

INDEX OF SHEETS

- 1) COVER SHEET
- 2) INDEX OF SHEETS
- 3) SUMMARY OF QUANTITIES, STATE STANDARDS
- 4) SAMPLE WORK ORDER
- 5) MOWING MAP TYPICAL
- 6) TRIMMING DETAIL
- 7) MOWING DETAIL #1-3
- 8) MOWING DETAIL #4-5
- 9) TC-17 TRAFFIC CONTROL DETAIL FOR FREEWAY SHOULDER CLOSURES AND PARTIAL RAMP CLOSURES

ILLINOIS DEPARTMENT OF TRANSPORTATION

MOWING

INDEX OF SHEETS

ROUTE	SECTION	COUNTY	TOTAL SHEETS	SHEET NUMBER
VARIOUS	2011-251-I	VARIOUS	9	3

CONTRACT 60P31

SUMMARY OF QUANTITIES

PAY ITEM	DESCRIPTION	UNIT	<i>0031</i>	<i>URBAN</i>
			CONTRACT MAINT FUND	100% STATE TOTAL
25000750	MOWING	ACRE	780	780
67100100	MOBILIZATION	L SUM	1	1
X2503112	MOWING (SPECIAL)	SQ YD	3,000	3,000


STATE STANDARDS

701011 - 02 701101 - 02 701311 - 03
701426 - 04 701901 - 01

ILLINOIS DEPARTMENT OF TRANSPORTATION
MOWING
SUMMARY OF QUANTITIES
STATE STANDARDS

ROUTE	SECTION	COUNTY	TOTAL SHEETS	SHEET NUMBER
VARIOUS	2011-251-I	VARIOUS	9	4

CONTRACT 60P31

 Illinois Department of Transportation	Contract Number: _____
	Mowing Work Order Number: _____
	Route: _____

Cook	DuPage	Kane	Work Order Prepared By	Team Section
Lake	McHenry	Will		

Location:

Refer to attached mow maps, which are hereby made a part of this work order (_____ sheets)

WORK INCLUDED IN THIS WORK ORDER			
Item	Mow Map Quantity	Priority Multiplier	Work Order Quantity
Mowing	Acres		Acres
Mowing Special	Sq yd		Sq yd

AGREEMENT TO ACCURACY OF WORK ORDER QUANTITIES

The Contractor and Engineer hereby agree that when the work is completed essentially to the lines and dimensions given, no further measurement will be required for any of the above items. Payment will be made for the work order quantities shown.

Engineer Signature and Date

Contractor Signature and Date

AUTHORIZATION OF WORK ORDER

Resident Engineer/Technician Signature _____ Date/Time _____

Contractor Signature (to acknowledge receipt) _____ Date/Time _____

CERTIFICATION OF COMPLETION

Contractor Signature _____ Date/Time _____

Number of 33 gallon bags filled with litter and debris _____

ACCEPTANCE OF COMPLETED WORK

I certify that the work order has been completed in conformance with contract requirements.

Resident Engineer/Technician Signature

Date/Time

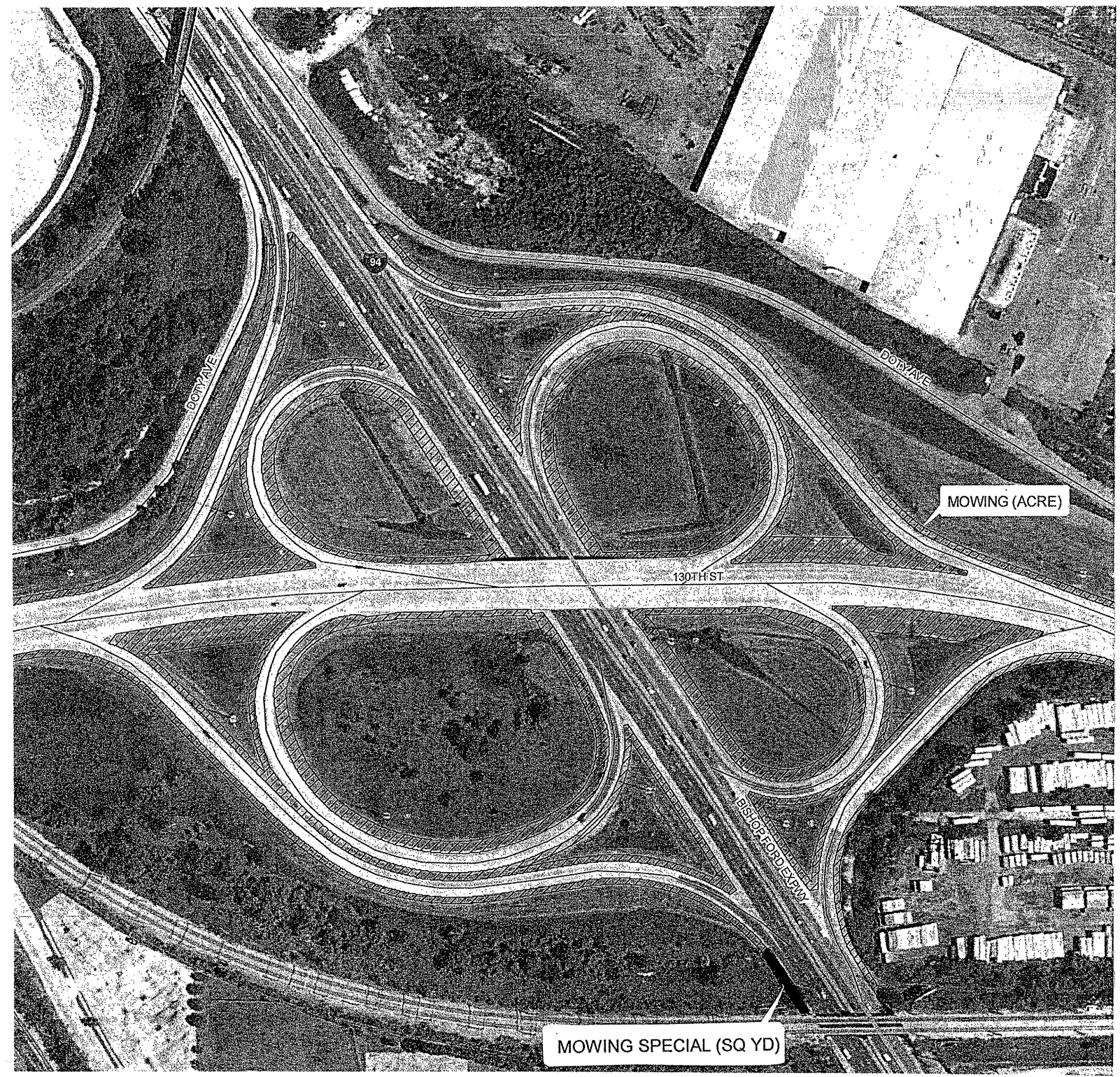
ILLINOIS DEPARTMENT OF TRANSPORTATION

MOWING

SAMPLE WORK ORDER

ROUTE	SECTION	COUNTY	TOTAL SHEETS	SHEET NUMBER
VARIOUS	2011-251-1	VARIOUS	9	5

CONTRACT 60P31



ILLINOIS DEPARTMENT OF TRANSPORTATION

MOWING

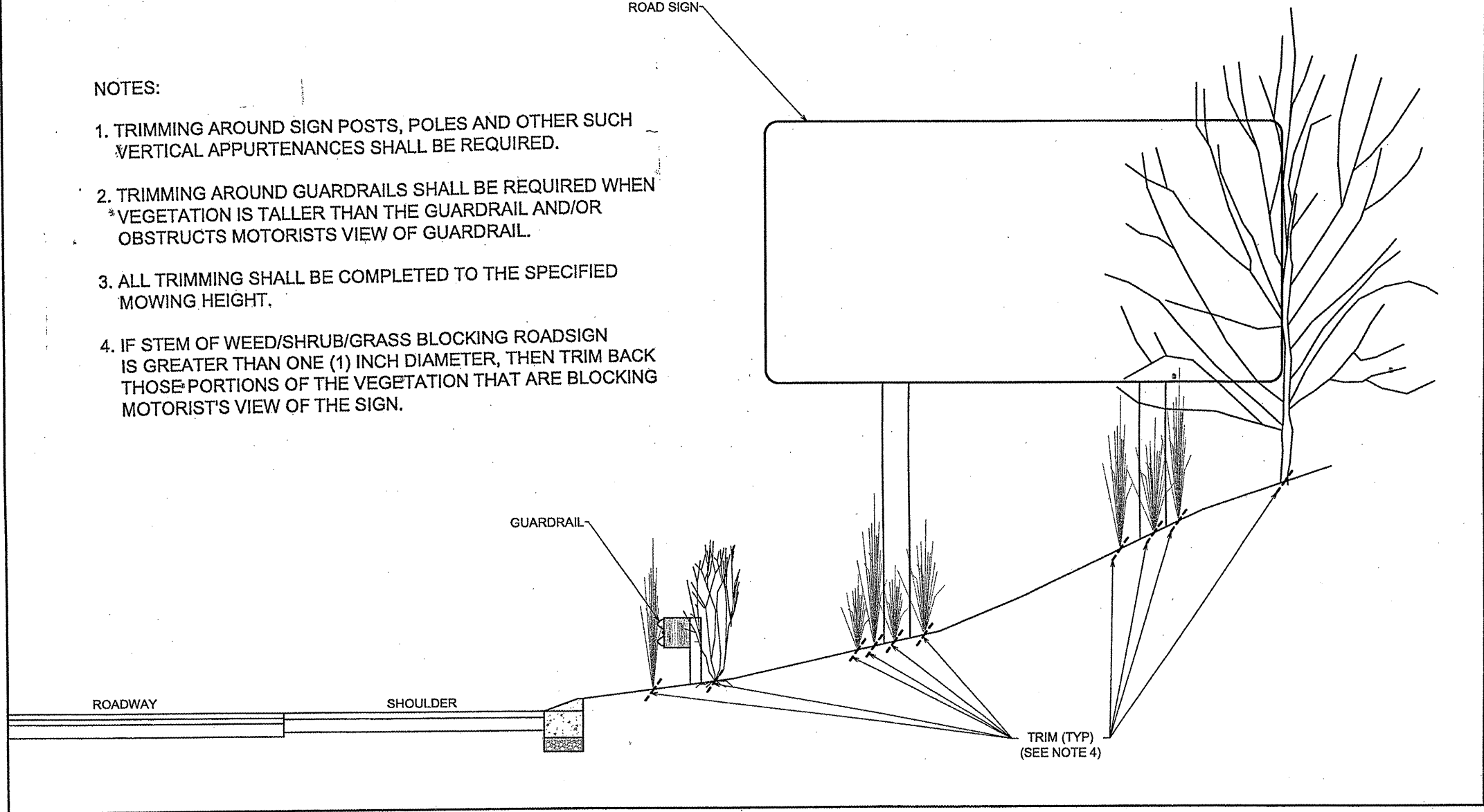
MOWING MAP TYPICAL

ROUTE	SECTION	COUNTY	TOTAL SHEETS	SHEET NUMBER
VARIOUS	2011-251-I	VARIOUS	9	6

CONTRACT 60P31

NOTES:

1. TRIMMING AROUND SIGN POSTS, POLES AND OTHER SUCH VERTICAL APPURTENANCES SHALL BE REQUIRED.
2. TRIMMING AROUND GUARDRAILS SHALL BE REQUIRED WHEN VEGETATION IS TALLER THAN THE GUARDRAIL AND/OR OBSTRUCTS MOTORISTS VIEW OF GUARDRAIL.
3. ALL TRIMMING SHALL BE COMPLETED TO THE SPECIFIED MOWING HEIGHT.
4. IF STEM OF WEED/SHRUB/GRASS BLOCKING ROADSIGN IS GREATER THAN ONE (1) INCH DIAMETER, THEN TRIM BACK THOSE PORTIONS OF THE VEGETATION THAT ARE BLOCKING MOTORIST'S VIEW OF THE SIGN.

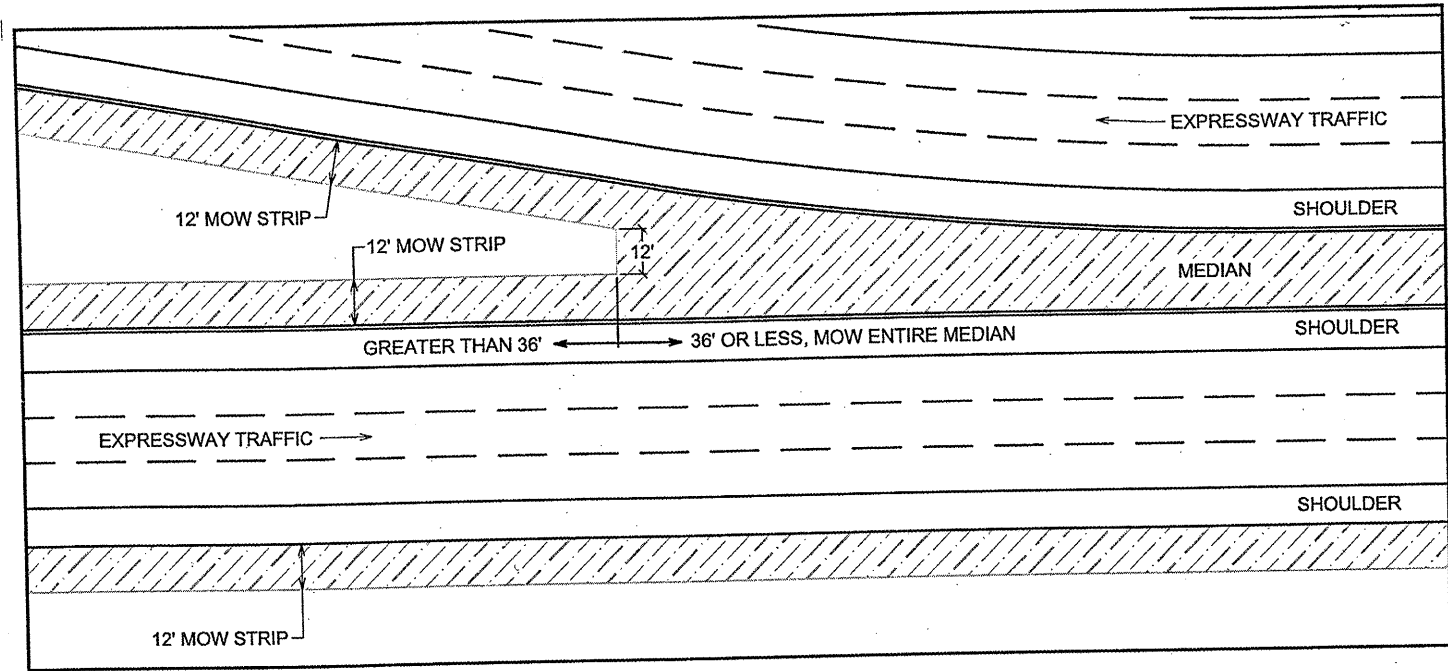


ILLINOIS DEPARTMENT OF TRANSPORTATION

MOWING
TRIMMING DETAIL

ROUTE	SECTION	COUNTY	TOTAL SHEETS	SHEET NUMBER
VARIOUS	2011-251-I	VARIOUS	9	7

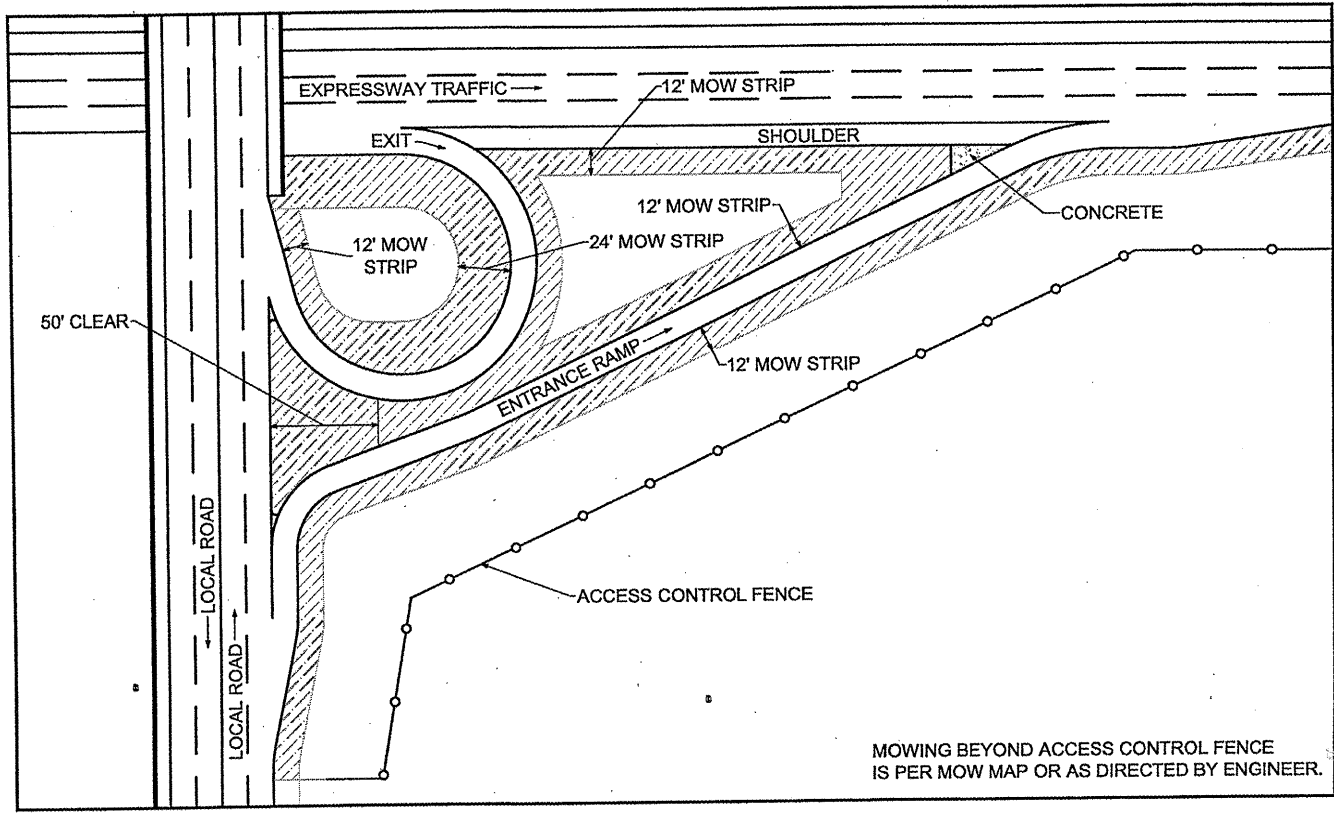
CONTRACT 60P31



Mowing Detail #1

Not to Scale

Medians

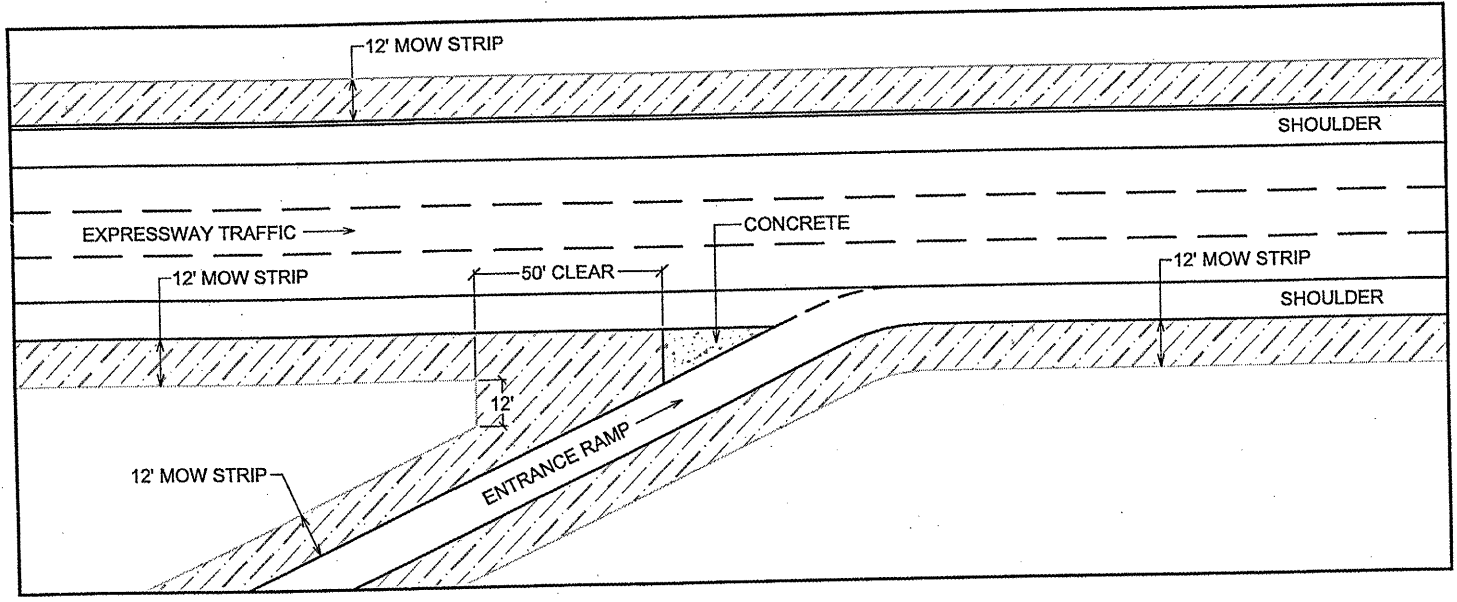


Mowing Detail #2

Not to Scale

Circular Ramp and Local Road

MOWING BEYOND ACCESS CONTROL FENCE IS PER MOW MAP OR AS DIRECTED BY ENGINEER.



Mowing Detail #3

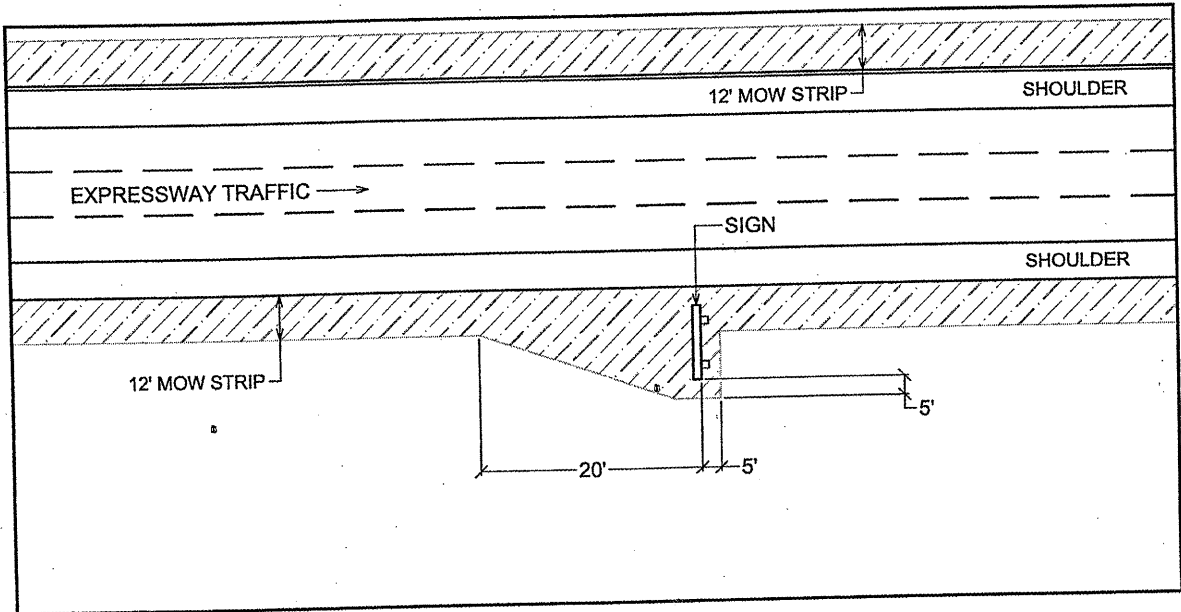
Not to Scale

Straight Merge Ramp

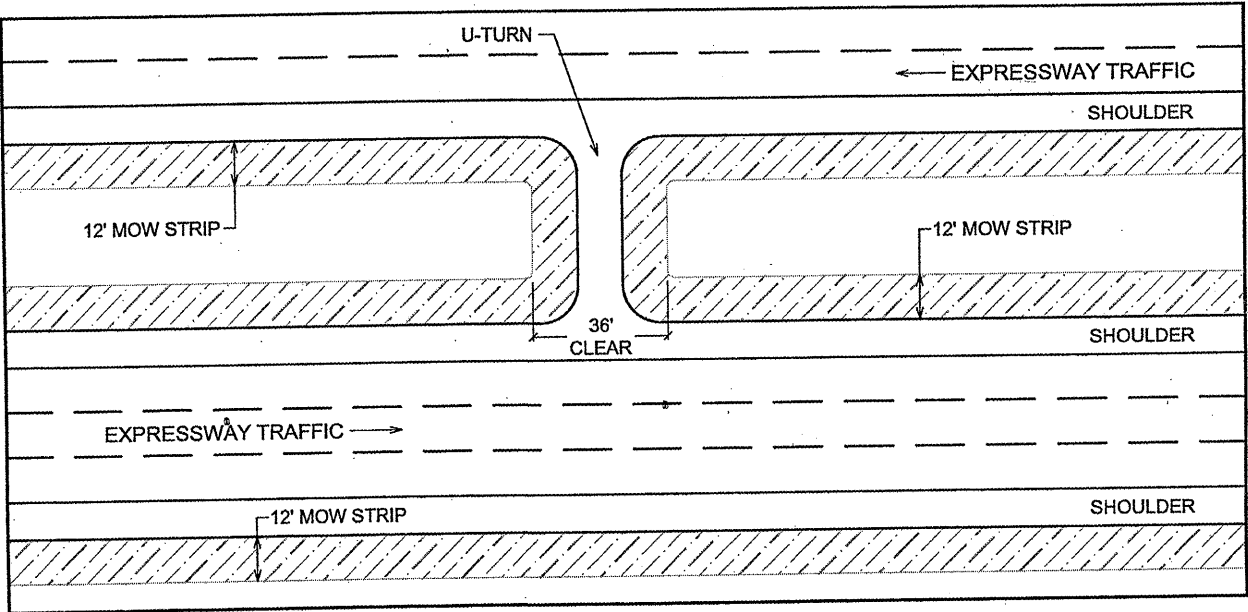
ILLINOIS DEPARTMENT OF TRANSPORTATION
MOWING
MOWING DETAILS #1 #2 & #3

ROUTE	SECTION	COUNTY	TOTAL SHEETS	SHEET NUMBER
VARIOUS	2011-251-I	VARIOUS	9	8

CONTRACT 60P31



Not to Scale Mowing Detail #4
Roadway Signs



Not to Scale Mowing Detail #5
U-Turns

ILLINOIS DEPARTMENT OF TRANSPORTATION

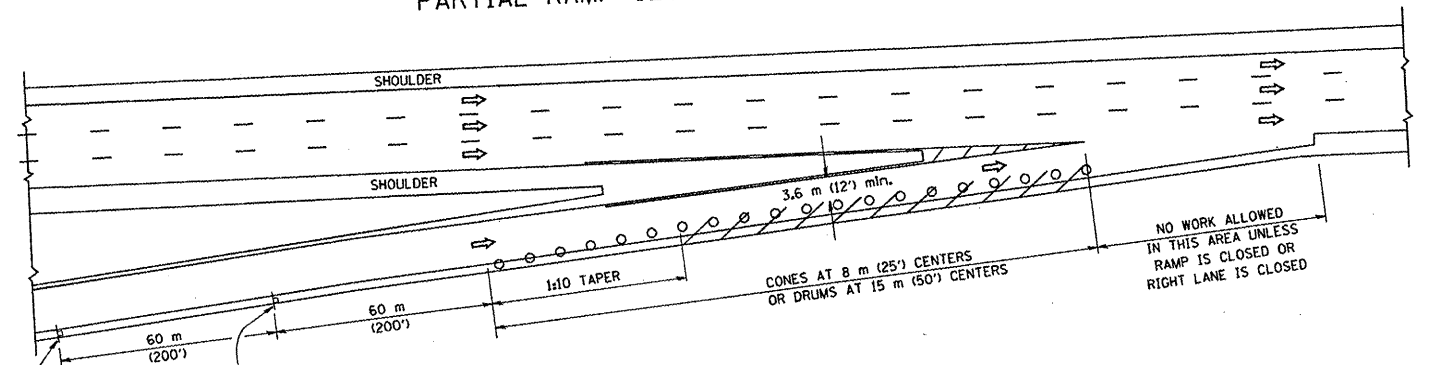
MOWING

MOWING DETAILS #4 & #5

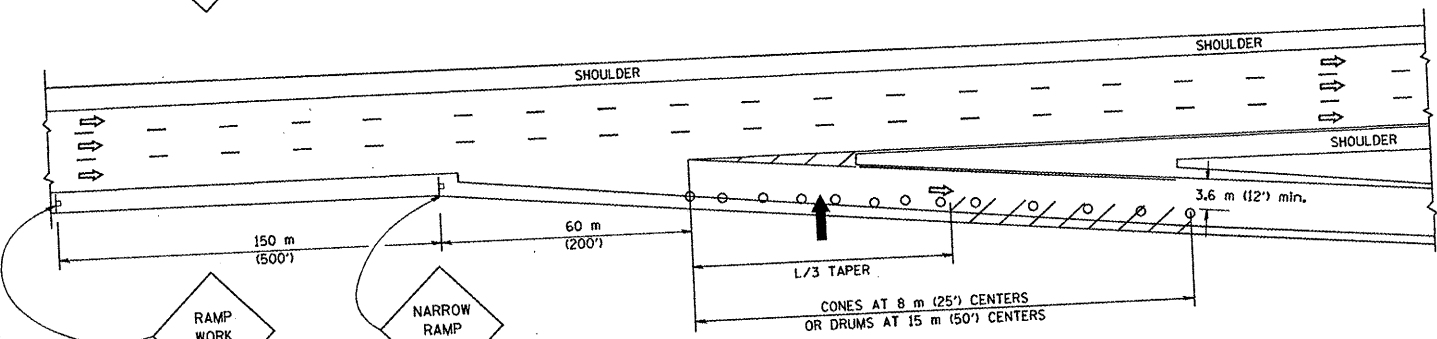
F.A. RTE.	SECTION	COUNTY	TOTAL SHEETS	SHEET NO.
2011-251-1	VARIOUS	9	9	
STA.	TO STA.			
FED. ROAD DIST. NO.	ILLINOIS FED. AID PROJECT			

CREATED: 03-23-95

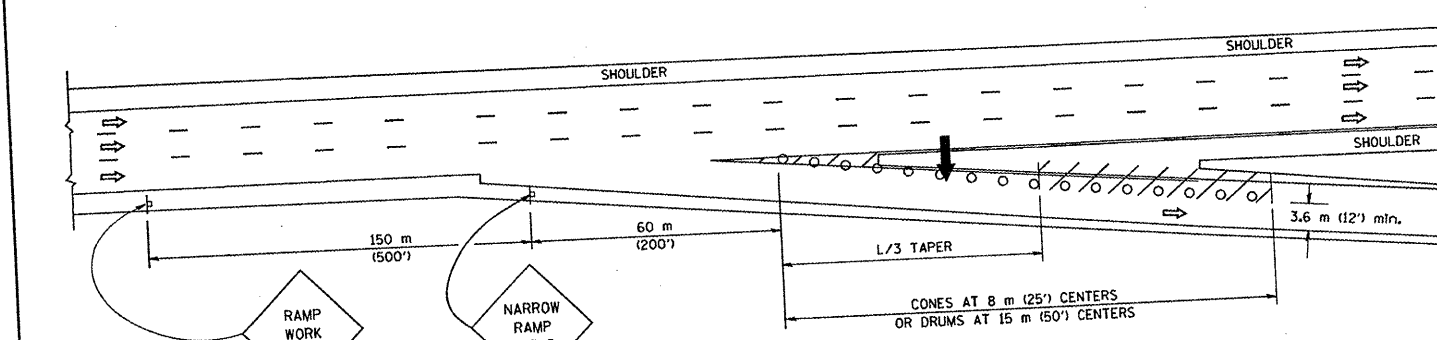
PARTIAL RAMP CLOSURE DETAILS



TYPICAL ENTRANCE RAMP



TYPICAL EXIT RAMP



TYPICAL EXIT RAMP

SYMBOLS

- ARROWBOARD
- WORK AREA
- SIGN ON PORTABLE OR PERMANENT SUPPORT
- FLAGGER WITH CONTROL SIGN
- DRUM WITH MONO-DIRECTIONAL STEADY BURNING LIGHT
- CONES - 700 (28) IN HEIGHT

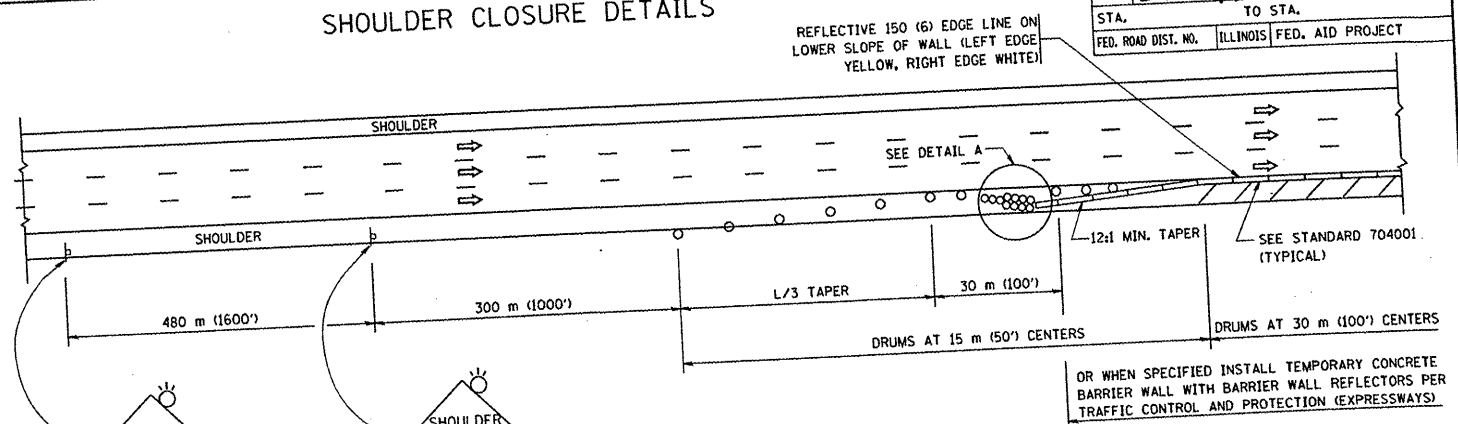
GENERAL NOTES

1. THE "L" DISTANCE EQUALS:

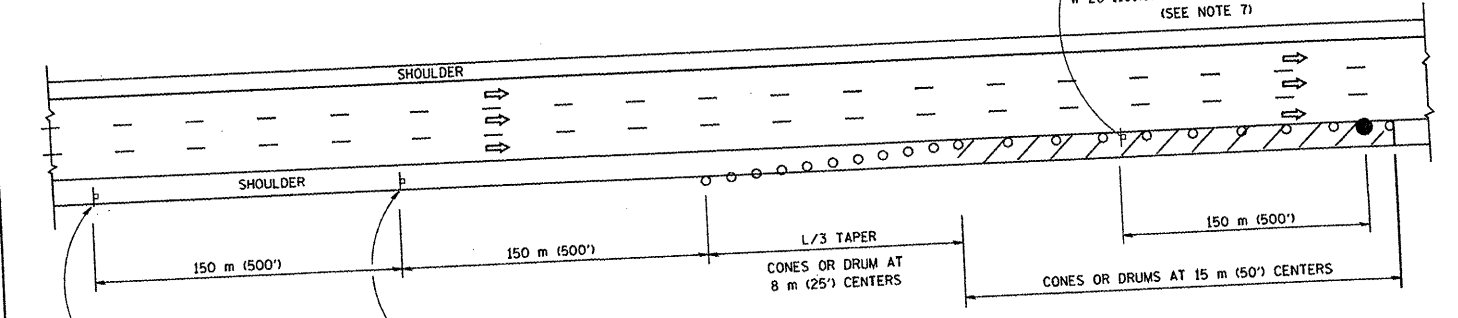
SPEED LIMIT	FORMULAS
80 Km/h (45 mph) OR GREATER:	METRIC ENGLISH
	$L=0.65(W/S)$ $L=(W/S)$

W = WIDTH OF OFFSET IN METERS (FEET)
S = NORMAL POSTED SPEED KM/H (MPH)
2. PLASTIC DRUMS WITH HIGH PERFORMANCE REFLECTIVE SHEETING AND STEADY BURNING LIGHTS ARE REQUIRED FOR ALL NIGHTTIME CLOSURES.
3. ALL SIGNS SHALL BE POST MOUNTED IF THE CLOSURE TIME EXCEEDS FOUR DAYS.
4. FLASHING LIGHTS SHALL BE USED DURING THE HOURS OF DARKNESS AND SHALL BE INSTALLED ABOVE THE FIRST TWO SETS OF SIGNS.

SHOULDER CLOSURE DETAILS



PERMANENT SHOULDER CLOSURE



DAYTIME SHOULDER CLOSURE

ARRAY DESIGN PER MANUFACTURER TO BE NCHRP 350 COMPLIANT FOR POSTED SPEED.

DETAIL "A"
IMPACT ATTENUATOR, TEMPORARY
(SEE NOTE 5)

REVISIONS	
NAME	DATE
DWS	11/96
JAF	12/02
NCHRP 350	04/03
JAF	2/06

ALL DIMENSIONS ARE IN MILLIMETERS (INCHES) UNLESS OTHERWISE SHOWN.

ILLINOIS DEPARTMENT OF TRANSPORTATION
TRAFFIC CONTROL DETAILS FOR FREEWAY SHOULDER CLOSURES
PARTIAL RAMP CLOSURES
DESIGNED BY: DWS
DRAWN BY: _____
CHECKED BY: _____
TC-17

SCALE: NONE
DATE: 3/1/2006

REVISION DATE: 02/28/06

PLOT DATE = 3/1/2006
 FILE NAME = K:\projects\60p31\7.dgn
 PLOT SCALE = 50:1
 USER NAME = jafg