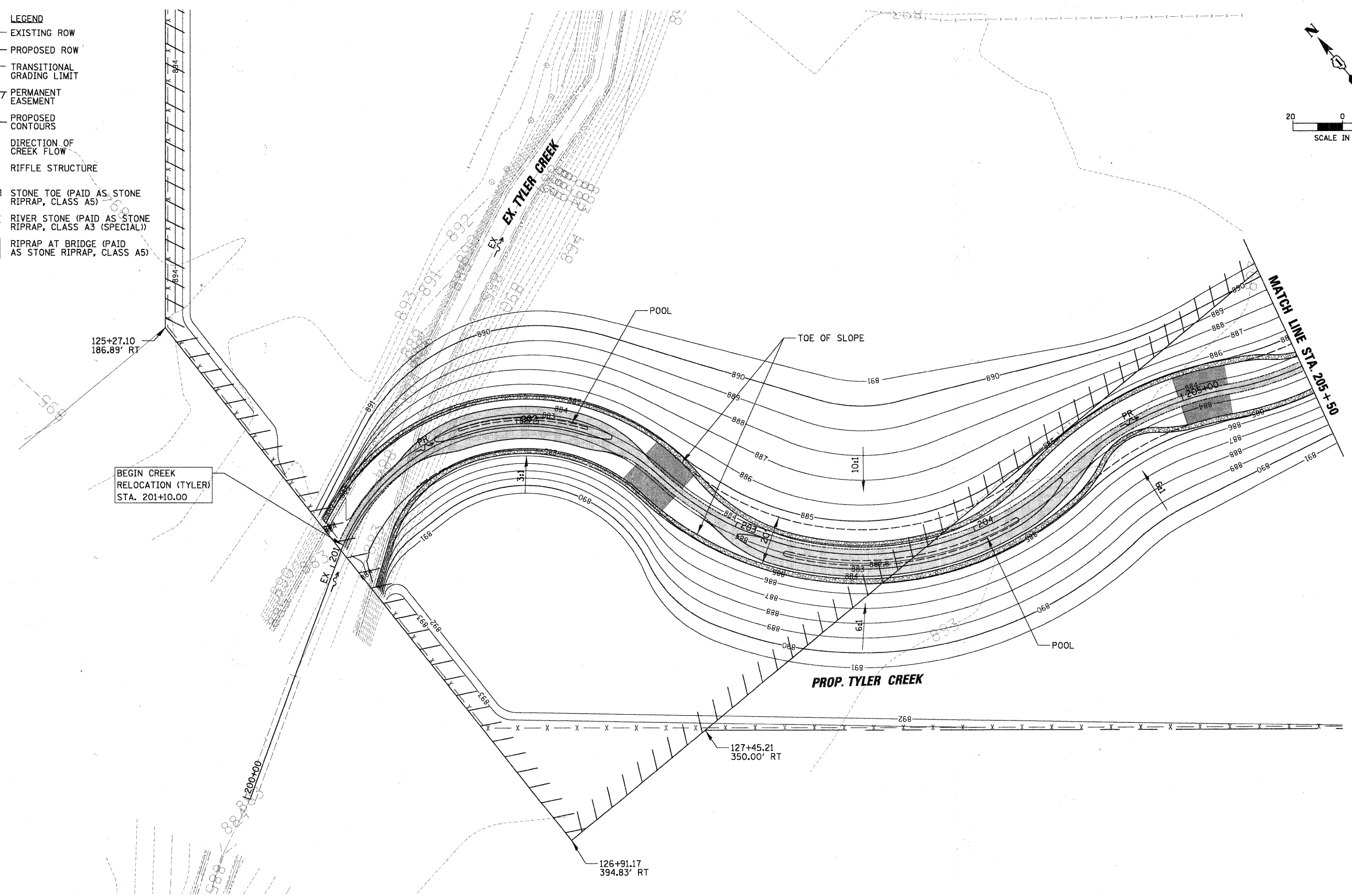
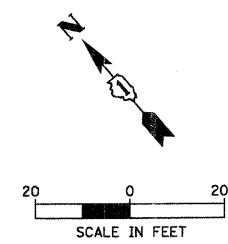


- LEGEND**
- EXISTING ROW
 - - - PROPOSED ROW
 - - - TRANSITIONAL GRADING LIMIT
 - //// PERMANENT EASEMENT
 - 885 PROPOSED CONTOURS
 - ~ DIRECTION OF CREEK FLOW
 - RIFFLE STRUCTURE
 - ▨ STONE TOE (PAID AS STONE RIPRAP, CLASS A5)
 - ▨ RIVER STONE (PAID AS STONE RIPRAP, CLASS A3 (SPECIAL))
 - ▨ RIPRAP AT BRIDGE (PAID AS STONE RIPRAP, CLASS A5)



CHRISTOPHER B. BURKE ENGINEERING, LTD.
 9575 W. Higgins Road, Suite 600
 Rosemont, Illinois 60018
 (647) 823-0500



FILE NAME =	USER NAME = BLUKE	DESIGNED - BLL	REVISED -
N:\kenecounty\04198\Civil\2\5GP04198_2-01.SHT		DRAWN - PMM	REVISED -
PLOT SCALE = 20'		CHECKED - JCS	REVISED -
PLOT DATE = 2/7/2011		DATE - 02/07/2011	REVISED -

**STATE OF ILLINOIS
DEPARTMENT OF TRANSPORTATION**

FAS 0130 - BIG TIMBER ROAD TYLER CREEK RELOCATION GRADING PLAN			
SCALE: 1"=20'	SHEET NO. OF SHEETS	STA. 201+10 TO STA. 205+50	

F.A.S. RTE.	SECTION	COUNTY	TOTAL SHEETS	SHEET NO.
0130	01-00266-00-BR	KANE	70	22
FED. ROAD DIST. NO. 1 ILLINOIS FED. AID PROJECT BRM-80030431			CONTRACT NO. 63196	